



U.S. Department
of Transportation

Federal Aviation
Administration

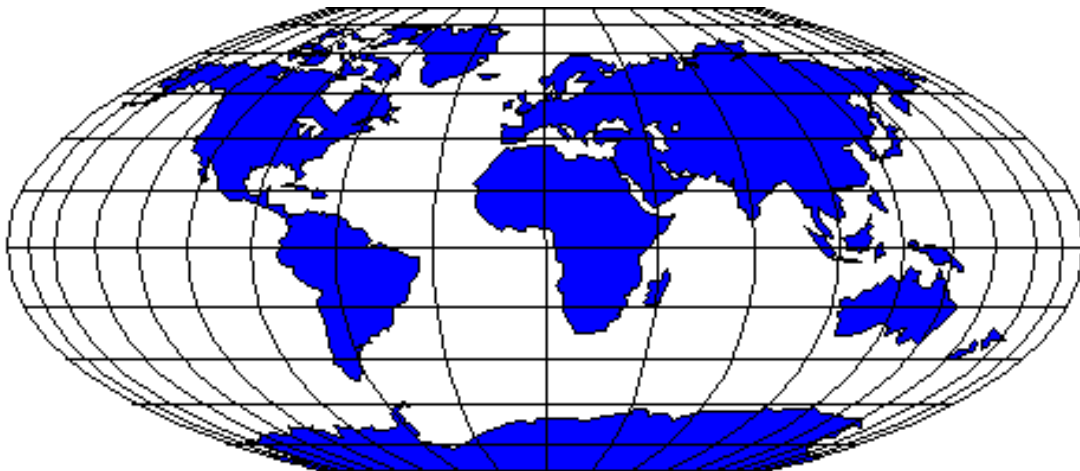
NOTICES TO AIRMEN

Domestic/International

April 23, 2020

Next Issue

May 21, 2020



Notices to Airmen included in this publication are NOT given during pilot briefings unless specifically requested by the pilot. An electronic version of this publication is on the internet at http://www.faa.gov/air_traffic/publications/notices

NOTICES TO AIRMEN - April 23, 2020

JANUARY – 2020							FEBRUARY – 2020							MARCH – 2020						
SUN	MON	TUE	WED	THU	FRI	SAT	SUN	MON	TUE	WED	THU	FRI	SAT	SUN	MON	TUE	WED	THU	FRI	SAT
			1	2	3	4							1	1	2	3	4	5	6	7
5	6	7	8	9	10	11	2	3	4	5	6	7	8	8	9	10	11	12	13	14
12	13	14	15	16	17	18	9	10	11	12	13	14	15	15	16	17	18	19	20	21
19	20	21	22	23	24	25	16	17	18	19	20	21	22	22	23	24	25	26	27	28
26	27	28	29	30	31		23	24	25	26	27	28	29	29	30	31				
APRIL – 2020							MAY – 2020							JUNE – 2020						
SUN	MON	TUE	WED	THU	FRI	SAT	SUN	MON	TUE	WED	THU	FRI	SAT	SUN	MON	TUE	WED	THU	FRI	SAT
			1	2	3	4						1	2		1	2	3	4	5	6
5	6	7	8	9	10	11	3	4	5	6	7	8	9	7	8	9	10	11	12	13
12	13	14	15	16	17	18	10	11	12	13	14	15	16	14	15	16	17	18	19	20
19	20	21	22	23	24	25	17	18	19	20	21	22	23	21	22	23	24	25	26	27
26	27	28	29	30			24	25	26	27	28	29	30	28	29	30				
							31													
JULY – 2020							AUGUST – 2020							SEPTEMBER – 2020						
SUN	MON	TUE	WED	THU	FRI	SAT	SUN	MON	TUE	WED	THU	FRI	SAT	SUN	MON	TUE	WED	THU	FRI	SAT
			1	2	3	4							1			1	2	3	4	5
5	6	7	8	9	10	11	2	3	4	5	6	7	8	6	7	8	9	10	11	12
12	13	14	15	16	17	18	9	10	11	12	13	14	15	13	14	15	16	17	18	19
19	20	21	22	23	24	25	16	17	18	19	20	21	22	20	21	22	23	24	25	26
26	27	28	29	30	31		23	24	25	26	27	28	29	27	28	29	30			
							30	31												
OCTOBER – 2020							NOVEMBER – 2020							DECEMBER – 2020						
SUN	MON	TUE	WED	THU	FRI	SAT	SUN	MON	TUE	WED	THU	FRI	SAT	SUN	MON	TUE	WED	THU	FRI	SAT
				1	2	3	1	2	3	4	5	6	7			1	2	3	4	5
4	5	6	7	8	9	10	8	9	10	11	12	13	14	6	7	8	9	10	11	12
11	12	13	14	15	16	17	15	16	17	18	19	20	21	13	14	15	16	17	18	19
18	19	20	21	22	23	24	22	23	24	25	26	27	28	20	21	22	23	24	25	26
25	26	27	28	29	30	31	29	30						27	28	29	30	31		

||| = Effective dates and cutoff dates for submitting information to the Publications Staff, AJV-8 for next publication. (Twenty-eight (28) days before next effective date.)

NOTICES TO AIRMEN

April 23, 2020

NOTE: The Notices to Airmen Publication (NTAP) will be discontinued effective June 18, 2020; the last NTAP will be published on May 21, 2020. Effective June 18, 2020, International Notices will be available at https://www.faa.gov/air_traffic/publications/internationalnotices/ and Domestic Notices will be available at https://www.faa.gov/air_traffic/publications/domesticnotices/. Information from the International and Domestic Notices sections of the NTAP will be transferred to these new websites. In addition, links to International Notices and Domestic Notices will be available on the FAA NOTAM Search website. Please see the Foreword for more information.

Note: Part 1, Part 95 Revisions, has been removed from the Notices to Airmen Publication (NTAP) effective January 30, 2020. Part 95 Revisions can be found on the Aeronautical Information Services (AJV-A) website (https://www.faa.gov/air_traffic/flight_info/aeronav/aero_data/Part_95_Consolidation/) and in the Federal Register Notice (<https://www.federalregister.gov>). Please see the Foreword for more information.

TABLE OF CONTENTS

General Information

Title	Page
Publication Schedule	iv
Subscription Information	v
Foreword (criteria and procedures for submitting data for publication)	vi
Contractions	ix
NOTAM	ix
Weather	xi

PART 1. International NOTAMs

General	1-INTL-3
International Notices	1-INTL-5
Section 1: Flight Prohibitions, Potentially Hostile Situations, and Foreign Notices	1-INTL-5
Section 2: International Oceanic Airspace Notices	1-INTL-11
General	1-INTL-11
Region Specific	1-INTL-12

PART 2. Domestic Notices

(Notices are listed in categories. For information on submitting domestic notices for publication, see page v.)

<u>Control No.</u>	<u>Category</u>	<u>Page No.</u>
	Section 1. General	
GEN19000	Automatic Dependent Surveillance-Broadcast (ADS-B) Out Preflight Responsibilities	2-GEN-3

GEN19001	Cold Temperature Restricted Airports	2-GEN-4
GEN19002	Operations of Aircraft Without ADS-B Out at Capacity-Constrained U.S. Airports	2-GEN-27
GEN20000	Aircraft Operations without ADS-B Out in Delegated Airspace between Canada and the United States	2-GEN-29

Section 2. Special Operations

MIL00003	Oregon/Washington. Lights Out Military Helicopter Operations	2-MIL-3
MIL02005	Texas. Central and Southwest Texas Lights Out Military Helicopter Operations	2-MIL-4
MIL05007	Wisconsin. Lights Out/Low Level Military Helicopter Operations	2-MIL-5
MIL06003	Various Locations. Lights Out Military Helicopter Operations	2-MIL-6
MIL20000	New Mexico Special Use Airspace	2-MIL-8
MIL20001	Vermont. Chugs Temporary MOA	2-MIL-10

Section 3. Airport and Facility Notices

Northeast United States

**There are no Northeast United States notices for this edition.*

Southeast United States

**There are no Southeast United States notices for this edition.*

East Central United States

EC08000	Ohio. Cleveland Hopkins International Airport Standard Taxi Route	2-EC-3
EC18000	Illinois. Midway Airport (MDW) Arrivals to Runway 22L and VFR Aircraft	2-EC-5
EC19001	Michigan. Detroit Metropolitan Wayne County (DTW) Standard (Coded) Taxi Routes	2-EC-6

South Central United States

**There are no South Central United States notices for this edition.*

North Central United States

**There are no North Central United States notices for this edition.*

Northwest United States

**There are no Northwest United States notices for this edition.*

Southwest United States

SW19000	Arizona. Phoenix Sky Harbor International Airport (PHX) Standardized Taxi Routes	2-SW-3
---------	--	--------

Alaska and Hawaii

**There are no Alaska and Hawaii notices for this edition.*

Section 4. Major Sporting & Entertainment Events

SP20010	North Carolina. All-Star Race & Coca-Cola 600	2-SPORT-3
SP20011	Michigan. FireKeepers Casino 400	2-SPORT-5

Section 5. Airshows

AIR20000	Various. 2020 U.S. & Canadian Military Aerial Aircraft/Parachute Demonstrations	2-AIR-3
----------	---	---------

Temporary Flight Restrictions (TFR) and additional NOTAM information are available on the FAA website at <http://www.faa.gov>

FOREWORD

As part of the Notices to Airmen (NOTAM) Modernization effort, the NTAP will be discontinued effective June 18, 2020; the last NTAP will be published on May 21, 2020. Effective June 18, 2020, International Notices will be available at https://www.faa.gov/air_traffic/publications/internationalnotices/ and Domestic Notices will be available at https://www.faa.gov/air_traffic/publications/domesticnotices/. Information from the International and Domestic Notices sections of the NTAP will be transferred to these new websites. In addition, links to International Notices and Domestic Notices will be available on the FAA NOTAM Search website (<https://notams.aim.faa.gov/notamSearch/>) and on the Air Traffic Plans and Publications website (https://www.faa.gov/air_traffic/publications/). More information, including notice submission procedures and submission cut-off dates, will be published on the International Notices website https://www.faa.gov/air_traffic/publications/internationalnotices/ and Domestic Notices website https://www.faa.gov/air_traffic/publications/domesticnotices/ when available. Please email 9-ATOR-HQ-PubGrp@faa.gov if you have any questions.

NATIONAL AIRSPACE SYSTEM CHANGES

The main references for changes to the National Airspace System (NAS) are the Aeronautical Charts and the Chart Supplements. Most changes to the NAS meeting NOTAM criteria are known sufficiently in advance to be carried in these publications. When this cannot be done, changes are carried as a NOTAM.

NOTAMS IN THE NOTICES TO AIRMEN PUBLICATION

The Notices to Airmen publication is issued every 28 days. Data in this publication that is current on the effective date of the next Chart Supplement will be transferred to the supplements and removed from this publication.

PUBLICATION CRITERIA

Part 95 Revisions

Effective with the January 30, 2020, edition, this Part has been removed from the publication in its entirety. Part 2, International NOTAMs, and Part 3, Domestic Notices, have been renumbered as Part 1 and Part 2, respectively.

PART 1. INTERNATIONAL NOTICES TO AIRMEN

The International Notices to Airmen feature significant international information and data which may affect a pilot's decision to enter or use areas of foreign or international airspace. Each issuance of this Part is complete in itself. Temporary data will be repeated in each issue until the condition ceases to exist. Permanent data will be carried until it is sufficiently published or is available in other permanent sources. New items will be indicated by a black bar running in the left or right margin.

The information in Part 1 is divided into two sections. Section 1, Flight Prohibitions, Potentially Hostile Situations, and Foreign Notices is arranged alphabetically by country. Section 2, International Oceanic Airspace Notices, is divided into two sections: General and Region Specific.

Any notice submitted for inclusion must include the following information at the end of the notice: submitting office and date of the revision (e.g., AJV-P, 10/10/2019). In addition, all electronic mail submissions to 9-ATOR-HQ-PubGrp@faa.gov should specify a time frame in which to expect the removal of the notice from the publication. Submitting offices should notify AJV-P when notices are no longer needed in the publication.

PART 2. DOMESTIC NOTICES

This section contains special notices and notices pertaining to almost every aspect of domestic aviation, such as military training areas, large scale sporting events that may attract media attention or draw large crowds of aircraft, air show information, and airport-specific information.

Data in this section is updated continuously. All submissions for inclusion in this section must have regional office approval and be submitted to AJV-P through the regional office.

Notices for events requiring Special Traffic Management Programs (STMP) should be coordinated following the procedures in FAA Order JO 7210.3, Facility Operation and Administration.

Submissions should be sent to AJV-P well in advance of but **no later than 28 days prior to** the effective date of the Notices to Airmen edition to ensure adequate lead time for inclusion in the publication.

Notices to Airmen (NOTAMS) submitted for inclusion in the NTAP are published **no earlier than two publication cycles (56 day periods) prior to the cycle in which the NOTAM becomes effective**. Special NOTAMS capture special events, like the Super Bowl, and are generally published in the NTAP for two consecutive publication cycles. NOTAMS that are more permanent in nature are posted in the NTAP until transferred to other appropriate Air Traffic Publications.

With the exception of dated special events, any notice submitted for inclusion must include the following information at the end of the notice: submitting office and date of the revision (e.g., AJV-P, 10/10/2019). In addition, all electronic mail submissions should specify a time frame in which to expect the removal of the notice from the publication. Regional offices should notify AJV-P12 when notices are no longer needed in the publication.

Text files should be submitted as Word documents. Any graphics submitted for inclusion must be of high quality and in camera-ready form; *FAX copies will not be accepted*. Electronic mail submissions are required and should be addressed to 9-ATOR-HQ-PubGrp@faa.gov . Graphics should be submitted in one of the following formats: GIF, JPEG, TIFF, BMP, or PDF. Please do not submit graphics with a “.doc” file extension. Each graphic must be submitted as a separate attachment. Domestic notices may be submitted in color or black and white. Avoid using white text in any graphic. Copyrighted materials, such as maps, should not be submitted for publication without written permission of the copyright owner.

REMOVED PARTS

Part 1. FDC NOTAMS

Effective with the February 28, 2019, edition, this part was removed from the publication. This included Section 1, Airway NOTAMS; Section 2, Airport, Facility and Procedural NOTAMS; and Section 3, General NOTAMS. These NOTAMS are still considered on request items when obtaining a briefing from Flight Service Stations (FSS). The most current and up-to-date information on NOTAMS is contained in the FAA's official NOTAM Search website, which can be found at <https://notams.aim.faa.gov/notamSearch/>. Pilots should obtain preflight IFR route and amendment FDC NOTAM information via the NOTAM Search website, an approved Flight Service web portal, or upon request by calling a Flight Service Station. Part 2, 3, and 4 of the NTAP were renumbered as Part 1, 2, and 3, respectively.

Part 95 Revisions

Part 95 Revisions can be found on the Aeronautical Information Services (AJV-A) website (https://www.faa.gov/air_traffic/flight_info/aeronav/aero_data/Part_95_Consolidation/) and in the Federal Register Notice (<https://www.federalregister.gov>). A Safety Panel held on June 26, 2018 concluded there was no safety risk by the removal of Part 95 Revisions from the publication.

Part 5. Special Temporary Flight Restrictions/Prohibited Areas Around the Washington, DC, Thurmont, MD, and Crawford, TX, Areas

Effective with the November 27, 2003, edition, this part was removed from the publication. For information on flight restrictions, pilots are directed to www.1800wxbrief.com, notams.aim.faa.gov/notamSearch/, or through Flight Service Stations at 1-800-WX-BRIEF.

TIME REFERENCES

All time references are indicated as UTC or local. During periods of Daylight Saving Time, effective hours in local time will be one hour earlier than shown. All states observe Daylight Saving Time except Arizona, Hawaii, Puerto Rico, and the Virgin Islands.

NEW INFORMATION

Vertical lines in the outside margin indicate new or revised information.

INTERNET

The entire Notices to Airmen publication is published on the internet at the following address in PDF and HTML format: http://www.faa.gov/air_traffic/publications/notices/.

There are two copies of the NTAP on the website, the current version and the previous version. This is done to overlay any current NOTAMs and information that may be needed.

ERROR OR OBSOLETE DATA NOTIFICATION

Notification of erroneous or obsolete data should be directed to the Federal Aviation Administration, Mission Support Services, Policy, AJV-P, 600 Independence Avenue, SW, Washington, DC 20597, or via e-mail at 9-ATOR-HQ-PubGrp@faa.gov.

SUBSCRIPTION INFORMATION

*This and other selected Air Traffic publications are available online:
www.faa.gov/air_traffic/publications*

<i>General Public*</i>	<i>Government Organizations*</i>
<p>Contact: Superintendent of Documents U.S. Government Printing Office P.O. Box 979050 St. Louis, MO 63197-9000</p> <p>Call: 202-512-1800</p> <p>Online: http://bookstore.gpo.gov</p>	<p>This publication is available on the FAA Website. All Government organizations are responsible for viewing, downloading, and subscribing to receive electronic mail notifications when changes occur to this publication. Electronic subscription information can be obtained by visiting the aforementioned website.</p>
<p><i>*For those desiring printed copies, current pricing is available on the GPO website at http://bookstore.gpo.gov</i></p>	

NOTICES TO AIRMEN

Publication Schedule

PARTS 1 AND 2

Information for **Part 1** (International) and **Part 2** (Domestic Notices) must be submitted electronically to **Mission Support Services, Policy (AJV-P)**, through the appropriate regional office. Requirements for Domestic Notices are listed on page viii of the Foreword and **must** be submitted well in advance of the event, but not later than 28 days prior to publication (see table below). Changes to submissions cannot be accepted after the cutoff dates. Domestic Notices for special events are published in two editions prior to the event. Information for Parts 1 and 2, as well as inquiries, should be addressed to:

Address	E-Mail	Phone Number
FAA HQ, Mission Support Services Mission Support Services, Policy (AJV-P) 600 Independence Ave., SW Washington, DC 20597	9-ATOR-HQ-PubGrp@faa.gov	1-202-267-0140

Cutoff Dates for Submitting Information To Be Published

Effective Date of Publication	Information Submission Cutoff Dates for Domestic Notices (Parts 1 & 2)
January 2, 2020	December 5, 2019
January 30, 2020	January 2, 2020
February 27, 2020	January 30, 2020
March 26, 2020	February 27, 2020
April 23, 2020	March 26, 2020
May 21, 2020	April 23, 2020
June 18, 2020	May 21, 2020
July 16, 2020	June 18, 2020
August 13, 2020	July 16, 2020
September 10, 2020	August 13, 2020
October 8, 2020	September 10, 2020
November 5, 2020	October 8, 2020
December 3, 2020	November 5, 2020

CONTRACTIONS

NOTAM CONTRACTIONS

This list contains most of the commonly used contractions currently in use in Notices to Airmen (NOTAMS) and the standard aviation weather products, such as METAR/TAF, area forecasts, SIGMETs, AIRMETs, etc.

<i>Contraction</i>	<i>Decode</i>
A	
ABN	Aerodrome Beacon
ABV	Above
ACFT	Aircraft
ACT	Active or Activated or Activity
AD	Aerodrome
ADJ	Adjacent
AGL	Above ground level
ALS	Approach Light System
ALT	Altitude
ALTN	Alternate
AP	Airport
APCH	Approach
APP	Approach control or Approach Control Office
ARR	Arrival or Arrive
ASPH	Asphalt
ATC	Air Traffic Control
ATIS	Automatic Terminal Information Service
AUTH	Authority
AVBL	Available
AWY	Airway
AZM	Azimuth
B	
BA GOOD	Braking action good
BA GOOD TO MEDIUM	Braking action good to medium
BA MEDIUM	Braking action medium
BA MEDIUM TO POOR	Braking action medium to poor
BA NIL	Braking action nil
BC	Back Course
BCN	Beacon
BLW	Below
C	
CAT	Category
CK	Check
CL	Center Line
CLSD	Closed
CMB	Climb
COM	Communications
CONC	Concrete
CTC	Contact
CTL	Control
D	
DCT	Direct
DEG	Degrees
DH	Decision Height
DIST	Distance
DLA	Delay or delayed
DLY	Daily
DME	Distance Measuring Equipment
DP	Dew Point Temperature

<i>Contraction</i>	<i>Decode</i>
E	
E	East
ELEV	Elevation
ENG	Engine
EXC	Except
F	
FAF	Final Approach fix
FAN MKR	Fan Marker
FDC	Flight Data Center
FM	From
FREQ	Frequency
FNA	Final approach
FRI	Friday
FSS	Automated/Flight Service Station
FT	Foot, feet
G	
GCA	Ground Control Approach
GP	Glide Path
GPS	Global Positioning System
GRVL	Gravel
H	
HDG	Heading
HEL	Helicopter
HELI	Heliport
HIRL	High Intensity Runway Lights
HIWAS	Hazardous Inflight Weather Advisory Service
HLDG	Holding
HR	Hour
I	
IAF	Initial approach fix
IAP	Instrument Approach Procedure
INBD	Inbound
ID	Identification
IDENT	Identify/Identifier/Identification
IF	Intermediate approach fix
ILS	Instrument Landing System
IM	Inner Marker
IN	Inch/Inches
INFO	Information
INOP	Inoperative
INSTR	Instrument
INT	Intersection
INTL	International
INTST	Intensity
K	
KT	Knots
L	
L	Left
LAA	Local Airport Advisory
LAT	Latitude

Contractions

Notices to Airmen

<i>Contraction</i>	<i>Decode</i>
LAWRS	Limited Aviation Weather Reporting Station
LB	Pound/Pounds
LC	Local Control
LOC	Localizer
LGT	Light or lighting
LGTD	Lighted
LIRL	Low Intensity Runway Lights
LM	Locator Middle
LDG	Landing
LO	Outer Locator
LONG	Longitude
M	
MAINT	Maintain, maintenance
MALS	Medium Intensity Approach Light System
MALSF	Medium Intensity Approach Light System with Sequenced Flashers
MALSR	Medium Intensity Approach Light System with Runway Alignment Indicator Lights
MAPT	Missed Approach Point
MCA	Minimum Crossing Altitude
MDA	Minimum Descent Altitude
MEA	Minimum Enroute Altitude
MIN	Minute
MIRL	Medium Intensity Runway Lights
MLS	Microwave Landing System
MM	Middle Marker
MNM	Minimum
MNT	Monitor/Monitoring/Monitored
MOC	Minimum Obstruction Clearance
MON	Monday
MSG	Message
MSL	Mean Sea Level
N	
N	North
NA	Not Authorized
NAV	Navigation
NB	Northbound
NDB	Nondirectional Radio Beacon
NE	North-east
NGT	Night
NM	Nautical Mile(s)
NTAP	Notice To Airmen Publication
NW	North-west
O	
OBSC	Obscured
OBST	Obstacle
OM	Outer Marker
OPR	Operate
OPS	Operation
P	
PAPI	Precision Approach Path Indicator
PAR	Precision Approach Radar
PARL	Parallel
PAX	Passenger
PCL	Pilot Controlled Lighting
PERM	Permanent/Permanently
PJE	Parachute jumping exercise
PLA	Practice Low Approach
PN	Prior Notice Required

<i>Contraction</i>	<i>Decode</i>
PPR	Prior Permission Required
PRN	Pseudo random noise
PROC	Procedure
PTN	Procedure Turn
R	
RAIL	Runway Alignment Indicator Lights
RCL	Runway Centerline
RCLL	Runway Centerline Light System
REC	Receive/Receiver
REDL	Runway Edge Light
REIL	Runway End Identifier Lights
REP	Report
RLLS	Runway Lead-in Lights System
RNAV	Area Navigation
RPLC	Replace
RSR	En Route Surveillance Radar
RTS	Return to Service
RVR	Runway Visual Range
RWY	Runway
S	
S	South
SAT	Saturday
SB	Southbound
SE	Southeast
SID	Standard Instrument Departure
SIMUL	Simultaneous
SKED	Scheduled
SSALF	Simplified Short Approach Lighting System with Sequenced Flashers
SSALR	Simplified Short Approach Lighting System with Runway Alignment Indicator Lights
SSALS	Simplified Short Approach Lighting System
SSR	Secondary Surveillance Radar
STA	Straight-in Approach
STAR	Standard Terminal Arrival
SUN	Sunday
SW	Southwest
T	
T	Temperature
TACAN	Tactical Air Navigational Aid
TAR	Terminal area surveillance radar
TDZ	Touchdown Zone
TEMPO	Temporary
TFC	Traffic
TFR	Temporary Flight Restriction
TGL	Touch and Go Landings
THR	Threshold
THRU	Through
THU	Thursday
TKOF	Takeoff
TUE	Tuesday
TWR	Tower
TWY	Taxiway
U	
U/S	Unserviceable
UNREL	Unreliable
V	
VASI	Visual Approach Slope Indicator

<i>Contraction</i>	<i>Decode</i>
VIS	Visibility
VOR	VHF Omni-Directional Radio Range
VORTAC	VOR and TACAN (colocated)
W	
W	West

<i>Contraction</i>	<i>Decode</i>
WB	Westbound
WED	Wednesday
WI	Within
WPT	Waypoint
WX	Weather

WEATHER CONTRACTIONS

<i>Contraction</i>	<i>Decode</i>
A	
A	Absolute (temperature)
A	Alaskan Standard Time (time groups only)
A	Arctic (air mass)
A01	Automated Observation without Precipitation Discriminator (rain/snow) (METAR)
A02	Automated Observation with Precipitation Discriminator (rain/snow) (METAR)
AAWF	Auxiliary Aviation Weather Facility
AC	Altocumulus
ACC	Altocumulus Castellanus
ACSL	Standing Lenticular Altocumulus
ACYC	Anticyclonic
ADRNDCK	Adirondack
ADV	Advise
ADVCTN	Advection
ADVY	Advisory
AFC	Area Forecast Center
AFDK	After Dark
ALF	Aloft
ALGHNY	Allegheny
ALQDS	All Quadrants
ALSEC	All Sectors
ALTA	Alberta
ALUTN	Aleutian
ALWF	Actual Wind Factor
AM	Ante Meridiem
AMD	Amended Forecast (TAF)
AMPLTD	Amplitude
AMS	Air Mass
AMS	American Meteorological Society
ANLYS	Analysis
APLCN	Appalachian
AS	Altostratus
ASOS	Automated Surface Observing System
ATLC	Atlantic
AURBO	Aurora Borealis
AWP	Aviation Weather Processors
B	
B	Beginning of Precipitation (time in minutes) (weather reports only)
B	Bering Standard Time (time groups only)
BACLIN	Baroclinic or Baroclinic Prognosis
BATROP	Barotropic or Barotropic Prognosis
BC	Patches (METAR)
BC	British Columbia
BCFG	Patchy Fog (METAR)
BCH	Beach
BCKG	Backing
BDA	Bermuda

<i>Contraction</i>	<i>Decode</i>
BECMG	Becoming (expected between 2 digit beginning hour and 2 digit ending hour) (TAF)
BFDK	Before Dark
BINOVC	Breaks in Overcast
BKN	Broken
BL	Between Layers
BL	Blowing (METAR)
BLD	Build
BLDUP	Buildup
BLKHLS	Black Hills
BLKT	Blanket
BLZD	Blizzard
BMS	Basic Meteorological Services
BNDRY	Boundary
BOVC	Base of Overcast
BR	Mist (METAR)
BRF	Brief
BRKHIC	Breaks in Higher Overcast
BRKSHR	Berkshire
BRM	Barometer
BTWN	Between
C	
C	Central Standard Time (time groups only)
C	Continental (air mass)
CAN	Canada
CARIB	Caribbean
CASCDS	Cascades
CAVOK	Cloud and Visibility OK (METAR)
CAVU	Clear or Scattered Clouds and Visibility Greater Than Ten Miles
CAWS	Common Aviation Weather Sub-system
CB	Cumulonimbus
CBMAM	Cumulonimbus Mamma
CC	Cirrocumulus
CCLKWS	Counterclockwise
CSSL	Standing Lenticular Cirrocumulus
CDFNT	Cold Front
CFP	Cold Front Passage
CHARC	Characteristic
CHSPK	Chesapeake
CI	Cirrus
CIG	Ceiling
CLD	Cloud
CLR	Clear at or below 12,000 feet (AWOS/ASOS report) (METAR)
CLRS	Clear and Smooth
CNCL	Cancel
CNDN	Canadian
CNVTV	Convective

<i>Contraction</i>	<i>Decode</i>
CONFDC	Confidence
CONTDVD	Continental Divide
CONTRAILS	Condensation Trails
COR	Correction to the observation (METAR)
CS	Cirrostratus
CST	Coast
CTGY	Category
CTSCLS	Catskills
CU	Cumulus
CUFRA	Cumulus Fractus
CYC	Cyclonic
CYCLGN	Cyclogenesis
D	
DABRK	Daybreak
DCAVU	Clear or Scattered Clouds and Visibility Greater than Ten, Remainder of Report Missing (weather reports only)
DKTS	Dakotas
DMSH	Diminish
DNS	Dense
DNSLP	Downslope
DNSTRM	Downstream
DP	Deep
DPNG	Deepening
DPTH	Depth
DR	Low Drifting (METAR)
DRFT	Drift
DS	Dust Storm (METAR)
DSIPT	Dissipate
DTLN	International Dateline
DTRT	Deteriorate
DU	Widespread Dust (METAR)
DVV	Downward Vertical Velocity
DWNDFTS	Downdrafts
DWPNT	Dew Point
DZ	Drizzle (METAR)
E	
E	Eastern Standard Time (time groups only)
E	Ending of Precipitation (time in minutes) (weather reports only)
E	Equatorial (air mass)
E	Estimated (weather reports only)
ELNGT	Elongate
EMBDD	Embedded
EMSU	Environment Meteorological Support Unit
ENERN	East–northeastern (weather reports only)
ENEWD	East–northeastward (weather reports only)
EOF	Expected Operations Forecast
ESERN	East–southeastern (weather reports only)
ESEWD	East–southeastward (weather reports only)
EXTRAP	Extrapolate
EXTRM	Extreme
F	
FA	Area Forecast
FAH	Fahrenheit
FEW	1 or 2 octas (eighths) cloud coverage (METAR)
FC	Funnel Cloud (METAR)
+FC	Tornado/ Water Spout (METAR)
FG	Fog (METAR)
FIBI	Filed but Impractical to Transmit
FILG	Filling

<i>Contraction</i>	<i>Decode</i>
FINO	Weather Report Will Not Be Filed for Transmission
FL	Flash Advisory
FLDST	Flood Stage
FLG	Falling
FLRY	Flurry
FLWIS	Flood Warning Issued
FM	From (4 digit beginning time in hours and minutes) (TAF)
FNT	Front
FNTGNS	Frontogenesis
FNTLYS	Frontolysis
FORNN	Forenoon
FRMG	Forming
FROPA	Frontal Passage
FROFSC	Frontal Surface
FRST	Frost
FRWF	Forecast Wind Factor
FRZ	Freeze
FRZLVL	Freezing Level
FRZN	Frozen
FT	Terminal Forecast
FU	Smoke (METAR)
FULYR	Smoke Layer Aloft
FUOCTY	Smoke Over City
FWC	Fleet Weather Central
FZ	Supercooled/freezing (METAR)
G	
G	Gusts Reaching (knots) (weather reports only)
GLFALSK	Gulf of Alaska
GLFCAL	Gulf of California
GLFMEX	Gulf of Mexico
GLFSTLAWR	Gulf of St. Lawrence
GR	Hail (METAR)
GRAD	Gradient
GRBNKS	Grand Banks
GRDL	Gradual
GRTLKS	Great Lakes
GS	Small Hail/Snow Pellets (METAR)
GSTS	Gusts
GSTY	Gusty
H	
HCVIS	High Clouds Visible
HDFRZ	Hard Freeze
HDSVLY	Hudson Valley
HI	Hi
HIEAT	Highest Temperature Equaled for All Time
HIEFM	Highest Temperature Equaled for The Month
HIESE	Highest Temperature Equaled So Early
HIESL	Highest Temperature Equaled So Late
HIFOR	High Level Forecast
HITMP	Highest Temperature
HIXAT	Highest Temperature Exceeded for All Time
HIXFM	Highest Temperature Exceeded for The Month
HIXSE	Highest Temperature Exceeded So Early
HIXSL	Highest Temperature Exceeded So Late
HLSTO	Hailstones
HLTP	Hilltop
HLYR	Haze Layer Aloft
HURCN	Hurricane
HUREP	Hurricane Report
HX	High Index
HZ	Haze (METAR)

<i>Contraction</i>	<i>Decode</i>
I	
IC	Ice Crystals (METAR)
ICG	Icing
ICGIC	Icing in Clouds
ICGICIP	Icing in Clouds and Precipitation
ICGIP	Icing in Precipitation
IMDT	Immediate
INLD	Inland
INSTBY	Instability
INTR	Interior
INTRMTRGN	Inter-Mountain Region
INTS	Intense
INTSFY	Intensify
INVRN	Inversion
IOVC	In Overcast
IR	Ice on Runway
J	
JTSTR	Jet Stream
K	
K	Cold (air mass)
KFRST	Killing Frost
L	
LABRDR	Labrador
LCTMP	Little Change in Temperature
LDG	Landing
LFT	Lift
LGRNG	Long Range
LIFR	Low IFR (weather reports only)
LK	Lake
LOEAT	Lowest Temperature Equaled for All Time
LOEFM	Lowest Temperature Equaled for The Month
LOESE	Lowest Temperature Equaled So Early
LOESL	Lowest Temperature Equaled So Late
LOTMP	Lowest Temperature
LOXAT	Lowest Temperature Exceeded for All Time
LOXFM	Lowest Temperature Exceeded for The Month
LOXSE	Lowest Temperature Exceeded So Early
LOXSL	Lowest Temperature Exceeded So Late
LSR	Loose Snow on Runway
LTGCC	Lightning Cloud-to-Cloud
LTGCCCG	Lightning Cloud-to-Cloud, Cloud-to-Ground
LTGCG	Lightning Cloud-to-Ground
LTGCW	Lightning Cloud-to-Water
LTGIC	Lightning in Clouds
LTLCG	Little Change
LTNG	Lightning
LX	Low Index
LYR	Layer or Layered or Layers
M	
M	Maritime (air mass)
M	In temperature field means "minus" or below zero (METAR)
M	In RVR Field, indicates visibility less than lowest reportable sensor value (e.g. M0600FT)
M	Missing (weather reports only)
M	Mountain Standard Time (time groups only)
MA	Map Analysis

<i>Contraction</i>	<i>Decode</i>
MAN	Manitoba
MEGG	Merging
MEX	Mexico
MHKVLY	Mohawk Valley
MI	Shallow (METAR)
MIDN	Midnight
MIFG	Patches of Shallow Fog Not Deeper Than Two Meters (METAR)
MLTLVL	Melting Level
MMO	Main Meteorological Office
MNLD	Mainland
MOGR	Moderate or Greater
MONTR	Monitor
MOV	Move
MRGL	Marginal
MRNG	Morning
MRTM	Maritime
MS	Minus
MSTLY	Mostly
MSTR	Moisture
MTN	Mountain
MVFR	Marginal VFR
MXD	Mixed
N	
NB	New Brunswick
NCWX	No Change in Weather
NELY	Northeasterly (weather reports only)
NERN	Northeastern
NEW ENG	New England
NFLD	Newfoundland
NGT	Night
NL	No Layers
NMBR	Number
NNERN	North-northeastern (weather reports only)
NNEWD	North-northeastward (weather reports only)
NNWRN	North-northwestern (weather reports only)
NNWWD	Northwestward (weather reports only)
NO	Not available (e.g. SLPNO, RVRNO)
NORPI	No Pilot Balloon Observation Will Be Filed Next Collection Unless Weather Changes Significantly
NPRS	Nonpersistent
NS	Nimbostratus
NS	Nova Scotia
NSCSWD	No Small Craft or Storm Warning are Being Displayed
NSW	No Significant Weather (METAR)
NVA	Negative Vorticity Advection
NWLY	Northwesterly (weather reports only)
NWRN	Northwestern (weather reports only)
O	
OBS	Observation
OBSC	Obscure
OCFNT	Occluded Front
OCLD	Occlude
OCLN	Occlusion
OFP	Occluded Frontal Passage
OFSHR	Offshore
OMTNS	Over Mountains
ONSHR	On Shore
ONT	Ontario

<i>Contraction</i>	<i>Decode</i>
ORGPHC	Orographic
OSV	Ocean Station Vessel
OTAS	On Top and Smooth
OTLK	Outlook
OVC	Overcast
P	
P	Pacific Standard Time (time group only)
P	Polar (air mass)
P	In RVR field, indicates visibility greater than highest reportable sensor value (e.g. P6000FT)
P6SM	Visibility greater than 6 statute miles (TAF only)
PAC	Pacific
PBL	Probable
PCPN	Precipitation
PDMT	Predominant
PDMT	Predominate
PDW	Priority Delayed Weather
PL	Ice Pellets (METAR)
PEN	Peninsula
PGTSND	Puget Sound
PIBAL	Pilot Balloon Observation
PISE	No Pilot Balloon Observation Due To Unfavorable Sea Conditions
PISO	No Pilot Balloon Observation Due To Snow
PIWI	No Pilot Balloon Observation Due To High, or Gusty, Surface Wind
PLW	Plow (snow)
PNHDL	Panhandle
PO	Dust/Sand Whirls (METAR)
PPINA	Radar Weather Report Not Available (or omitted for a reason different than those otherwise stated)
PPINE	Radar Weather Report No Echoes Observed
PPINO	Radar Weather Report Equipment Inoperative Due To Breakdown
PPIOK	Radar Weather Report Equipment Operation Resumed
PPIOM	Radar Weather Report Equipment Inoperative Due To Maintenance
PR	Partial (METAR)
PRBLTY	Probability
PRESFR	Pressure Falling Rapidly
PRESRR	Pressure Rising Rapidly
PRJMP	Pressure Jump (weather reports only)
PROB40	Probability 40 percent (METAR)
PROG	Prognosis or Prognostic
PRSNT	Present
PS	Plus
PSG	Passage
PSG	Passing
PTCHY	Patchy
PTLY	Partly
PVA	Positive Vorticity Advection
PY	Spray (METAR)
Q	
QSTNRY	Quasi-stationary
QUE	Quebec
R	
R	Runway (used in RVR measurement)
RA	Rain (METAR)
RABA	No RAWIN Obs., No Balloons Available
RABAL	Radiosonde Balloon Wind Data
RABAR	Radiosonde Balloon Release

<i>Contraction</i>	<i>Decode</i>
RACO	No RAWIN Obs., Communications Out
RADAT	Radiosonde Observation Data
RADNO	Report Missing Account Radio Failure
RAFI	Radiosonde Observation Not Filed
RAFRZ	Radiosonde Observation Freezing Levels
RAHE	No RAWIN Obs., No Gas Available
RAICG	Radiosonde Observation Icing at
RAOB	Radiosonde Observation
RAREP	Radar Weather Report
RAVU	Radiosonde Analysis and Verification Unit
RAWE	No RAWIN obs., Unfavorable Weather
RAWI	No RAWIN Obs., High and Gusty Winds
RAWIN	Upper Winds Obs. (by radio methods)
RCD	Radar Cloud Detection Report
RCDNA	Radar Cloud Detection Report Not Available
RCDNE	Radar Cloud Detection Report No Echoes Observed
RCDNO	Radar Cloud Detector Inoperative Due to Breakdown Until
RCDOM	Radar Cloud Detector Inoperative Due to Maintenance Until
RCKY	Rockies (mountains)
RDG	Ridge
RDWND	Radar Dome Wind
RESTR	Restrict
RGD	Ragged
RH	Relative Humidity
RHINO	Radar Echo Height Information Not Available
RHINO	Radar Range Height Indicator Not Operating on Scan
RIOGD	Rio Grande
RMK	Remark(s)
RNFL	Rainfall
ROBEPS	Radar Operating Below Prescribed Standard
RPD	Rapid
RSG	Rising
RUF	Rough
RY/RWY	Runway
S	
SA	Sand (METAR)
SASK	Saskatchewan
SBSD	Subside
SC	Stratocumulus
SCSL	Standing Lenticular Stratocumulus
SCT	Scattered
SELS	Severe Local Storms
SELY	Southeasterly (weather reports only)
SERN	Southeastern (weather reports only)
SFERICS	Atmospherics
SG	Snow Grains (METAR)
SGD	Solar-Geophysical Data
SH	Showers (METAR)
SHFT	Shift (weather reports only)
SHLW	Shallow
SHRTLY	Shortly
SHWR	Shower
SIERNEV	Sierra Nevada
SKC	Sky Clear (METAR)
SLD	Solid
SLP	Sea Level pressure (e.g. 1013.2 reported as 132)
SLR	Slush on Runway
SLT	Sleet
SM	Statute mile(s)

<i>Contraction</i>	<i>Decode</i>
SMK	Smoke
SMTH	Smooth
SN	Snow (METAR)
SNBNK	Snowbank
SNFLK	Snowflake
SNOINCR	Snow Depth Increase in Past Hour
SNW	Snow
SNWFL	Snowfall
SP	Station Pressure
SPECI	Special Report (METAR)
SPKL	Sprinkle
SPLNS	South Plains
SPRD	Spread
SQ	Squall (METAR)
SQAL	Squall
SQLN	Squall Line
SS	Sandstorm (METAR)
SSEEN	South-southeastern (weather reports only)
SSEWD	South-southeastward (weather reports only)
SSWRN	South-southwestern (weather reports only)
SSWWD	South-southwestward (weather reports only)
ST	Stratus
STAGN	Stagnation
STFR	Stratus Fractus
STFRM	Stratiform
STG	Strong
STM	Storm
STNRY	Stationary
SWLG	Swelling
SWLY	Southwesterly (weather reports only)
SWRN	Southwestern (weather reports only)
SX	Stability Index
SXN	Section
SYNOP	Synoptic
SYNS	Synopsis
T	
T	Trace (weather reports only)
T	Tropical (air mass)
TCU	Towering Cumulus
TEMPO	Temporary changes expected (between 2 digit beginning hour and 2 digit ending hour) (TAF)
THD	Thunderhead (non METAR)
THDR	Thunder (non METAR)
THK	Thick
THN	Thin
TKOF	Takeoff
TOP	Cloud Top
TOVC	Top of Overcast
TPG	Topping
TRIB	Tributary
TROF	Trough
TROP	Tropopause
TRPCD	Tropical Continental (air mass)
TRPCL	Tropical
TRPLYR	Trapping Layer
TS	Thunderstorm (METAR)
TSHWR	Thundershower (non METAR)
TSQLS	Thundersqualls (non METAR)
TSTM	Thunderstorm (non METAR)
TURBC	Turbulence
TURBT	Turbulent
TWRG	Towering

<i>Contraction</i>	<i>Decode</i>
U	
UAG	Upper Atmosphere Geophysics
UDDF	Up and Down Drafts
UNSBL	Unseasonable
UNSTBL	Unstable
UNSTDY	Unsteady
UNSTL	Unsettle
UP	Unknown Precipitation (Automated Observations)
UPDFTS	Updrafts
UPR	Upper
UPSLP	Upslope
UPSTRM	Upstream
UVV	Upward Vertical Velocity
UWNDS	Upper Winds
V	
V	Varies (wind direction and RVR)
V	Variable (weather reports only)
VA	Volcanic Ash (METAR)
VC	Vicinity
VLCTY	Velocity
VLNT	Violent
VLY	Valley
VR	Veer
VRB	Variable wind direction when speed is less than or equal to 6 knots
VRISL	Vancouver Island, BC
VRT MOTN	Vertical Motion
VSBY	Visibility
VSBYDR	Visibility Decreasing Rapidly
VSBYIR	Visibility Increasing Rapidly
VV	Vertical Visibility (Indefinite Ceiling) (METAR)
W	
W	Warm (air mass)
WA	AIRMET
WDC-1	World Data Centers in Western Europe
WDC-2	World Data Centers Throughout Rest of World
WDLY	Widely
WDSPRD	Widespread
WEA	Weather
WFP	Warm Front Passage
WINT	Winter
WND	Wind
WNWRN	West-northwestern (weather reports only)
WNWWD	West-northwestward (weather reports only)
WPLTO	Western Plateau
WR	Wet Runway
WRM	Warm
WRMFNT	Warm Front
WRNG	Warning
WS	Wind Shear (in TAFs, low level and not associated with convective activity)
WS	SIGMET
WSHFT	Wind Shift
WSOM	Weather Service Operations Manual
WSR	Wet Snow on Runway
WSWRN	West-southwestern (weather reports only)
WSWWD	West-southwestward (weather reports only)
WTR	Water
WTSPT	Waterspout
WV	Wave
WW	Severe Weather Forecast
WXCON	Weather Reconnaissance Flight Pilot Report

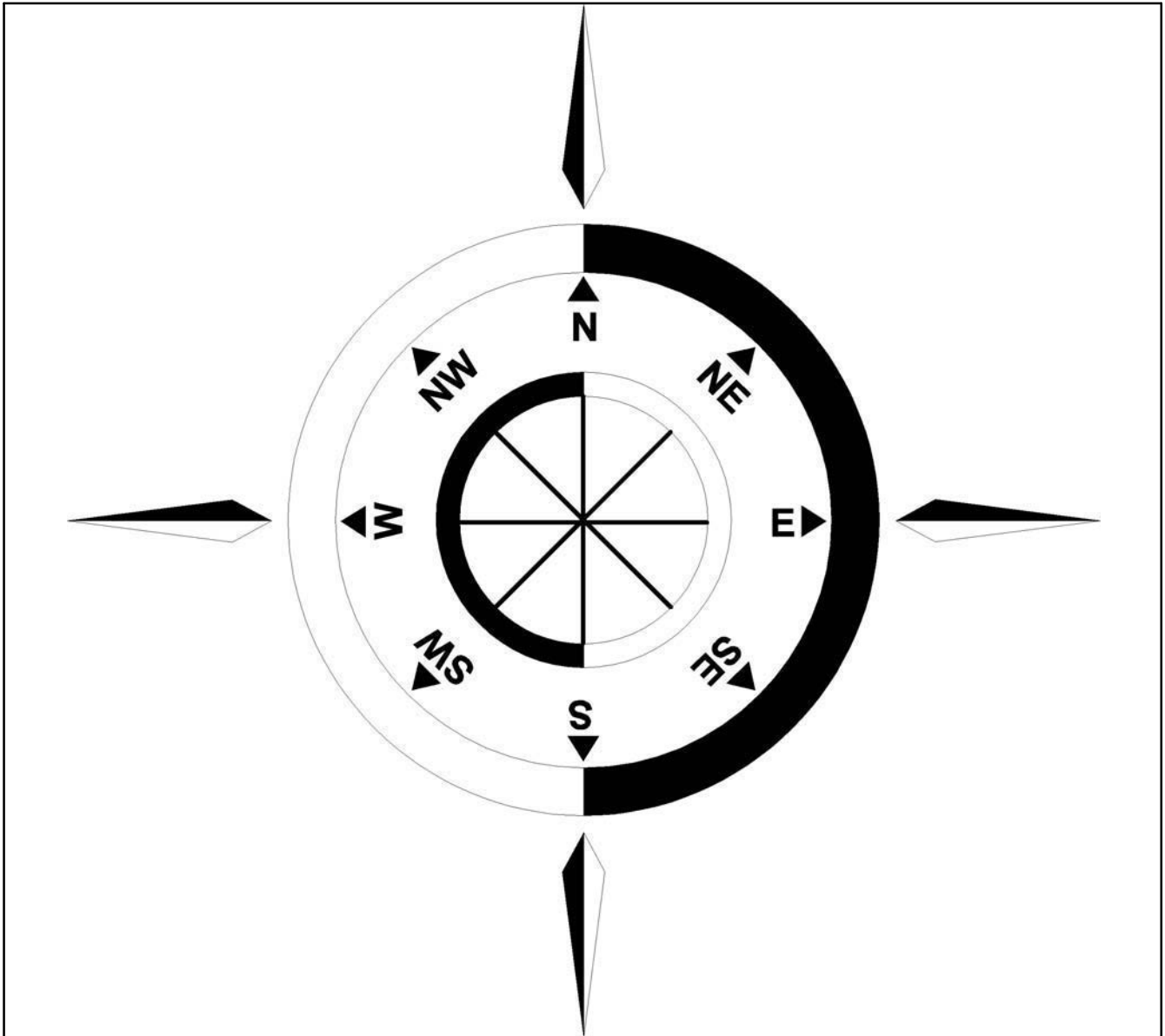
Contractions**Notices to Airmen**

<i>Contraction</i>	<i>Decode</i>
X	
XCP	Except
XPC	Expect
Y	
Y	Yukon Standard Time (time groups only)

<i>Contraction</i>	<i>Decode</i>
YKN	Yukon
YLSTN	Yellowstone
Z	
ZI	Zonal Index
ZI	Zone of Interior

Part 1.

INTERNATIONAL NOTICES TO AIRMEN



GENERAL

This part features significant international notices to airmen (NOTAM) information and special notices.

The information contained in the International Notices to Airmen section is derived from international notices and other official sources. International notices are of two types: Class One International Notices are those NOTAMs issued via telecommunications. They are made available to the U.S. flying public by the International NOTAM Office (Washington, DC) through the local Flight Service Station (FSS). Class Two International Notices are NOTAMs issued via postal services and are not readily available to the U.S. flying public. The International Notices to Airmen draws from both these sources and also includes information about temporary hazardous conditions which are not otherwise readily available to the flyer. Before any international flight, always update the International Notices to Airmen with a review of Class One International Notices available at your closest FSS.

Foreign notices carried in this publication are carried as issued to the maximum extent possible. Most abbreviations used in this publication are listed in ICAO Document DOC 8400. Wherever possible, the source of the information is included at the end of an entry. This allows the user to confirm the currency of the information with the originator.

International Information Source Code Table

<i>Code</i>	<i>Information Source</i>
I or II (followed by the NOTAM number)	Class One or Class Two NOTAMs
AIP	Aeronautical Information Publication (followed by the AIP change number)
AIC	Aeronautical Information Circular (followed by the AIC number)
DOS	Department of State advisories
FAA	Federal Aviation Administration.

The International Notices to Airmen section gives world wide coverage in each issue. Coverage for the U.S. and its external territories is limited and normally will not include data available on the domestic NOTAM circuit or published in other official sources available to the user.

Each issue of this section is complete in itself. Temporary data will be repeated in each issue until the condition ceases to exist. Permanent data will be carried until it is sufficiently published or is available in other permanent sources. New items will be indicated by a black bar running in the left or right margin.

This section includes data issued by foreign governments. The publication of this data in no way constitutes legal recognition of the validity of the data. This publication does not presume to tabulate all NOTAM data, although every effort is made to publish all pertinent data. The Federal Aviation Administration does not assume liability for failure to publish, or the accuracy of, any particular item.

INTERNATIONAL NOTICES TO AIRMEN

SECTION 1

Flight Prohibitions, Potentially Hostile Situations, and Foreign Notices

Introduction: This section contains information concerning FAA-issued flight prohibitions for countries and territories outside the United States, advisory notices on potentially hostile situations abroad, and notices issued by foreign governments and civil aviation authorities.

These may affect a pilot's decision to enter or use areas of foreign or international airspace. During the flight planning process, pilots should review FAA's Prohibitions, Restrictions, and Notices at https://www.faa.gov/air_traffic/publications/us_restrictions/ for foreign airspace and entry restrictions. Foreign airspace penetration without official authorization can involve extreme danger to the aircraft and the imposition of severe penalties and inconvenience on both passengers and crew. A flight plan on file with ATC authorities does not necessarily constitute the prior permission required by certain authorities. The possibility of fatal consequences cannot be ignored in some areas of the world.

All operators also should check the latest U.S. Department of State Travel Warnings and Public Announcements at <http://travel.state.gov>, and can obtain additional information by contacting the appropriate foreign government authorities.

BAHAMAS, THE

Communication Procedures for Aircraft Operations Within the Nassau and Grand Bahama Terminal Control Areas (TMAS')

Effective immediately, all aircraft operating or about to operate (IFR, VFR, including military unless specifically exempted, etc.) within the Nassau and Grand Bahama TMAS' and within a 50 nautical mile radius of Nassau and Freeport Int'l airports MUST report, as a minimum, to the respective Approach Control Unit as follows:

1. Their identification.
2. Aircraft type.
3. Position.
4. Direction of flight.
5. Cruising level.

These reports must enable the respective approach control unit to provide a more effective advisory service to possible conflicting flights, controlled and uncontrolled within the TMAS'.

Pilots must contact the appropriate approach control unit as follows:

1. "Nassau Approach" on frequency 121.0 MHz.
2. "Freeport Approach" on frequency 126.5 MHz.

(Bahamas AIC 2/20/2010)

CHINA

Federal Aviation Administration (FAA) Flight Routing Authorization Requirements in United States Territorial Airspace

All aircraft with China registrations beginning with B; aircraft using the ICAO designator of a China company; or aircraft used for China diplomatic flights require FAA routing authorization for flights in United

States Territorial Airspace, unless the aircraft is registered in Hong Kong, Macau, or Taiwan, or the aircraft is operated by a company with FAA Part 129 operations specifications.

Only IFR flights are eligible for FAA routing authorization. See current FAA KFDC NOTAMS for other requirements and information regarding Aircraft that Operate To or From or Within or Transit Territorial Airspace of the United States (US).

FAA routing authorization is in addition to any US State Department (DOS) diplomatic clearance or US Transportation Security Administration (TSA) waiver. To obtain FAA routing authorization, contact the FAA System Operations Support Center at 9-ATOR-HQ-RT-REQ@faa.gov or FAX 202-267-5289 (Attention FAA SOSC), or call 202-267-8115.

Provide the following information:

1. Name and address of company or individual. Include a phone number (in case there are questions concerning your request) and a return E-Mail address. Aircraft Information: Callsign (including ICAO designator if assigned)/type/registration number.
2. General Route Itinerary: Date range. City (ICAO Location Identifier)- City (ICAO Location Identifier)- City (ICAO Location Identifier), etc.
3. Specific route information for each leg of the flight: Callsign, departure point, date/time (UTC), route, destination, date/time (UTC).
4. Purpose: Cargo, Passenger, Diplomatic, etc. for each leg of flight.

(FAA/AJR-2 System Operations Security 6/27/2013)

CUBA

Federal Aviation Administration (FAA) Flight Routing Authorization Requirements in United States Territorial Airspace

All aircraft with Cuba registration beginning with CU; aircraft using the ICAO designator of a Cuba company; or aircraft used for Cuba diplomatic flights require FAA routing authorization for flights in United States Territorial Airspace.

Only IFR flights are eligible for FAA routing authorization. See current FAA KFDC NOTAMS for other requirements and information regarding Aircraft that Operate To or From or Within or Transit Territorial Airspace of the United States (US).

FAA routing authorization is in addition to any US State Department (DOS) diplomatic clearance or US Transportation Security Administration (TSA) waiver. To obtain FAA routing authorization, contact the FAA System Operations Support Center at 9-ATOR-HQ-RT-REQ@faa.gov or FAX 202-267-5289 (Attention FAA SOSC), or call 202-267-8115.

Provide the following information:

1. Name and address of company or individual. Include a phone number (in case there are questions concerning your request) and a return E-Mail address. Aircraft Information: Callsign (including ICAO designator if assigned)/type/registration number.
2. General Route Itinerary: Date range. City (ICAO Location Identifier)- City (ICAO Location Identifier)- City (ICAO Location Identifier), etc.
3. Specific route information for each leg of the flight: Callsign, departure point, date/time (UTC), route, destination, date/time (UTC).
4. Purpose: Cargo, Passenger, Diplomatic, etc. for each leg of flight.

(FAA/AJR-2 System Operations Security 6/27/2013)

EUROPE**EUROCONTROL Integrated Initial Flight Plan Processing System (IFPS).**

All aircraft flying into, departing from, or transiting Europe within the General Air Traffic (GAT) Civil system must file an International Civil Aviation Organization (ICAO) flight plan with the Integrated Initial Flight Plan Processing System (IFPS) managed by the EUROCONTROL Central Flow Management Unit (CFMU). This system is the sole source for the distribution of the IFR/GAT portions of flight plan information to Air Traffic Control (ATC) within participating European Countries collectively known as the IFPS Zone (IFPZ). Flight plans and associated messages for all IFR flights, including the IFR portions of mixed IFR/VFR flights, entering, over flying or departing the IFPZ, must be addressed only to the two IFPS addresses for that portion of the flight within the IFPZ. The IFPS addresses to be included in flight plans and associated messages submitted by operators that intend to fly into or through the IFPZ are as follows:

Network	IFPS Unit Addresses	
IFPU1		
Haren, Belgium SITA BRUEP7X	AFTN	EUCHZMFP
IFPU2		
Brétigny, France SITA PAREP7X	AFTN	EUCBZMFP

IFPS will ensure distribution of the accepted flight plan to all relevant ATS units within their area of responsibility. Flight plan message originators filing to IFPS are responsible for ensuring that the flight plan and any modifications made thereto are addressed to all the relevant ATS units outside the IFPZ. In order to ensure consistency between the flight plan data distributed within the IFPZ and that distributed outside the IFPZ, the EUROCONTROL CFMU has established a “re-addressing function”. The “re-addressing function” is intended primarily for flights originating within the IFPZ and proceeding outside the IFPZ.

Note.— Detailed procedures and information applicable to flight plan addressing and distribution are contained in the EUROCONTROL “Basic CFMU Handbook”.

Additional information may be obtained from Aeronautical Information Publications (AIP) and/or Aeronautical Information Circulars (AIC) issued by individual countries, through commercial flight planners, or by contacting EUROCONTROL, rue de la Fusee, 96, B-1130, Brussels, Belgium. Telephone: 32-2- 745-1950, FAX: 32-2- 729-9041 and on the EUROCONTROL Web site: www.eurocontrol.int.

NOTE-IFPS Zone Countries – Albania, Armenia, Austria, Belgium, Bosnia and Herzegovina, Bulgaria, Croatia, Cyprus, Czech Republic, Denmark, Estonia, Finland, France, Germany, Greece, Hungary, Ireland, Italy, Lithuania, Luxembourg, Former Yugoslav Republic of Macedonia, Malta, Monaco, Morocco, Netherlands, Norway, Poland, Portugal, Republic of Moldova, Romania, Slovak Republic, Slovenia, Spain, Sweden, Switzerland, Turkey, Ukraine, United Kingdom, Serbia and Montenegro.

(AEU-500 6/7/2010)

IRAN (ISLAMIC REPUBLIC OF)**Federal Aviation Administration (FAA) Flight Routing Authorization Requirements in United States Territorial Airspace**

All aircraft with Iran registrations beginning with EP; aircraft using the ICAO designator of an Iran company; or aircraft used for Iran diplomatic flights require FAA routing authorization for flights in United States Territorial Airspace.

Only IFR flights are eligible for FAA routing authorization. See current FAA KFDC NOTAMS for other requirements and information regarding Aircraft that Operate To or From or Within or Transit Territorial Airspace of the United States (US).

FAA routing authorization is in addition to any US State Department (DOS) diplomatic clearance or US Transportation Security Administration (TSA) waiver. To obtain FAA routing authorization, contact the FAA System Operations Support Center at 9-ATOR-HQ-RT-REQ@faa.gov or FAX 202-267-5289 (Attention FAA SOSOC), or call 202-267-8115.

Provide the following information:

1. Name and address of company or individual. Include a phone number (in case there are questions concerning your request) and a return E-Mail address. Aircraft Information: Callsign (including ICAO designator if assigned)/type/registration number.
2. General Route Itinerary: Date range. City (ICAO Location Identifier)- City (ICAO Location Identifier)- City (ICAO Location Identifier), etc.
3. Specific route information for each leg of the flight: Callsign, departure point, date/time (UTC), route, destination, date/time (UTC).
4. Purpose: Cargo, Passenger, Diplomatic, etc. for each leg of flight.
(FAA/AJR-2 System Operations Security 6/27/2013)

DEMOCRATIC PEOPLE'S REPUBLIC OF NORTH KOREA (DPRK)

Federal Aviation Administration (FAA) Flight Routing Authorization Requirements in United States Territorial Airspace

All aircraft with DPRK registrations beginning with P; aircraft using the ICAO designator of a DPRK company; or aircraft used for DPRK diplomatic flights require FAA routing authorization for flights in United States Territorial Airspace.

Only IFR flights are eligible for FAA routing authorization. See current FAA KFDC NOTAMS for other requirements and information regarding Aircraft that Operate To or From or Within or Transit Territorial Airspace of the United States (US).

FAA routing authorization is in addition to any US State Department (DOS) diplomatic clearance or US Transportation Security Administration (TSA) waiver. To obtain FAA routing authorization, contact the FAA System Operations Support Center at 9-ATOR-HQ-RT-REQ@faa.gov or FAX 202-267-5289 (Attention FAA SOSOC), or call 202-267-8115.

Provide the following information:

1. Name and address of company or individual. Include a phone number (in case there are questions concerning your request) and a return E-Mail address. Aircraft Information: Callsign (including ICAO designator if assigned)/type/registration number.
2. General Route Itinerary: Date range. City (ICAO Location Identifier)- City (ICAO Location Identifier)- City (ICAO Location Identifier), etc.
3. Specific route information for each leg of the flight: Callsign, departure point, date/time (UTC), route, destination, date/time (UTC).
4. Purpose: Cargo, Passenger, Diplomatic, etc. for each leg of flight.
(FAA/AJR-2 System Operations Security 6/27/2013)

RUSSIA FEDERATION

Federal Aviation Administration (FAA) Flight Routing Authorization Requirements in United States Territorial Airspace

All aircraft with Russian Federation registrations beginning with RA; aircraft using the ICAO designator of a Russian Federation company; or aircraft used for Russian Federation diplomatic flights require FAA

routing authorization for flights in United States Territorial Airspace, unless the aircraft is operated by a company with FAA Part 129 operations specifications.

Only IFR flights are eligible for FAA routing authorization. See current FAA KFDC NOTAMS for other requirements and information regarding Aircraft that Operate To or From or Within or Transit Territorial Airspace of the United States (US).

FAA routing authorization is in addition to any US State Department (DOS) diplomatic clearance or US Transportation Security Administration (TSA) waiver. To obtain FAA routing authorization, contact the FAA System Operations Support Center at 9-ATOR-HQ-RT-REQ@faa.gov or FAX 202-267-5289 (Attention FAA SOSOC), or call 202-267-8115.

Provide the following information:

1. Name and address of company or individual. Include a phone number (in case there are questions concerning your request) and a return E-Mail address. Aircraft Information: Callsign (including ICAO designator if assigned)/type/registration number.
2. General Route Itinerary: Date range. City (ICAO Location Identifier)- City (ICAO Location Identifier)- City (ICAO Location Identifier), etc.
3. Specific route information for each leg of the flight: Callsign, departure point, date/time (UTC), route, destination, date/time (UTC).
4. Purpose: Cargo, Passenger, Diplomatic, etc. for each leg of flight.

(FAA/AJR-2 System Operations Security 6/27/2013)

SUDAN

Federal Aviation Administration (FAA) Flight Routing Authorization Requirements in United States Territorial Airspace

All aircraft with Sudan registrations beginning with ST; aircraft using the ICAO designator of a Sudan company; or aircraft used for Sudan diplomatic flights require FAA routing authorization for flights in United States Territorial Airspace.

Only IFR flights are eligible for FAA routing authorization. See current FAA KFDC NOTAMS for other requirements and information regarding Aircraft that Operate To or From or Within or Transit Territorial Airspace of the United States (US).

FAA routing authorization is in addition to any US State Department (DOS) diplomatic clearance or US Transportation Security Administration (TSA) waiver. To obtain FAA routing authorization, contact the FAA System Operations Support Center at 9-ATOR-HQ-RT-REQ@faa.gov or FAX 202-267-5289 (Attention FAA SOSOC), or call 202-267-8115.

Provide the following information:

1. Name and address of company or individual. Include a phone number (in case there are questions concerning your request) and a return E-Mail address. Aircraft Information: Callsign (including ICAO designator if assigned)/type/registration number.
2. General Route Itinerary: Date range. City (ICAO Location Identifier)- City (ICAO Location Identifier)- City (ICAO Location Identifier), etc.
3. Specific route information for each leg of the flight: Callsign, departure point, date/time (UTC), route, destination, date/time (UTC).
4. Purpose: Cargo, Passenger, Diplomatic, etc. for each leg of flight.

(FAA/AJR-2 System Operations Security 6/27/2013)

SYRIAN ARAB REPUBLIC**Federal Aviation Administration (FAA) Flight Routing Authorization Requirements in United States Territorial Airspace**

All aircraft with Syrian Arab Republic registrations beginning with YK; aircraft using the ICAO designator of a Syrian Arab Republic company; or aircraft used for Syrian Arab Republic diplomatic flights require FAA routing authorization for flights in United States Territorial Airspace.

Only IFR flights are eligible for FAA routing authorization. See current FAA KFDC NOTAMS for other requirements and information regarding Aircraft that Operate To or From or Within or Transit Territorial Airspace of the United States (US).

FAA routing authorization is in addition to any US State Department (DOS) diplomatic clearance or US Transportation Security Administration (TSA) waiver. To obtain FAA routing authorization, contact the FAA System Operations Support Center at 9-ATOR-HQ-RT-REQ@faa.gov or FAX 202-267-5289 (Attention FAA SOSOC), or call 202-267-8115.

Provide the following information:

1. Name and address of company or individual. Include a phone number (in case there are questions concerning your request) and a return E-Mail address. Aircraft Information: Callsign (including ICAO designator if assigned)/type/registration number.
2. General Route Itinerary: Date range. City (ICAO Location Identifier)- City (ICAO Location Identifier)- City (ICAO Location Identifier), etc.
3. Specific route information for each leg of the flight: Callsign, departure point, date/time (UTC), route, destination, date/time (UTC).
4. Purpose: Cargo, Passenger, Diplomatic, etc. for each leg of flight.

(FAA/AJR-2 System Operations Security 6/27/2013)

SECTION 2

INTERNATIONAL OCEANIC AIRSPACE NOTICES

INTRODUCTION

The following information contains the most current notices involving airspace matters pertaining to U.S. internationally delegated airspace. The information provided is divided into two sections: General and Region Specific.

GENERAL

COMMUNICATIONS REQUIREMENTS IN OCEANIC AIRSPACE DELEGATED TO THE FAA FOR PROVISION OF AIR TRAFFIC SERVICES

1. The United States Aeronautical Information Publication (AIP), (section ENR 7.1, paragraph 6) describes satellite voice (SatVoice) communications services available in Anchorage, New York and Oakland oceanic control areas (OCAs), along with the requirements for use of those services. The AIP currently allows use of suitably installed and operated SatVoice to communicate with New York and San Francisco Radio only “when unable to communicate on HF” (High Frequency) radio. Some questions have arisen as to what constitutes being “unable” to communicate on HF.

2. Anchorage, New York and Oakland OCAs are “high seas” (international) airspace (for U.S. operators, 14 CFR § 91.703 refers). Therefore, all operations therein must comply with ICAO Annex 2 (*Rules of the Air*), which requires that aircraft “maintain continuous air-ground voice communication watch on the appropriate communication channel...” (Paragraph 3.6.5.1). This means that a long-range communication system (LRCS) is required whenever operations will exceed the range of VHF voice communications between aircraft and air traffic control. Additionally, regulations issued by the State of Registry/ State of the Operator may stipulate how many LRCS are required. Examples of such regulations, for U.S. operators, include 14 CFR §§ 91.511, 121.351, 125.203 and 135.165.

3. A flight crew is considered to be “unable to communicate on HF” during poor HF propagation conditions (commonly referred to as “HF Blackouts”), or if there is an inflight HF radio failure. In those cases, that flight crew can use AIP-compliant SatVoice equipment and procedures to continue the flight to destination. A one-time return flight through Anchorage, New York and Oakland OCAs, to obtain maintenance on the HF radios, would also be acceptable under these circumstances, and would meet the criteria for use of SatVoice with New York and San Francisco Radio as per the AIP. Operators must still comply with applicable regulations on how many LRCS are required, as well as with applicable Minimum Equipment List (MEL) provisos.

4. When first establishing communications with New York or San Francisco Radio via SatVoice, the flight crew should request a “callback check.” Such a check will help ensure Radio can contact the crew during the period of SatVoice use. The table below illustrates a sample callback check. Additionally, in the event the operator has indicated capability for SatVoice via both Iridium and Inmarsat (by listing codes M1 and M3 in Item 10 of the ATC flight plan), the flight crew should inform the Radio operator of the service to use for communicating with the aircraft.

Sample Transcript of SatVoice Callback Check	
SatVoice call from the air:	“New York RADIO, Airline 123, request SatVoice Callback check.” For aircraft equipped with both Inmarsat and Iridium: “... on Inmarsat/Iridium (as applicable)”
Answer from the ground:	“Airline 123, copy, terminating call, will call you right back”
New SatVoice call from ground:	“Airline 123, New York Radio with your SatVoice callback, how do you read?”
SatVoice answer from the air:	“Loud and clear, SatVoice callback check good, good day!”

5. FAA point of contact: Aviation Safety Inspector Kevin C. Kelley, Flight Technologies and Procedures Division, 202-267-8854, Kevin.C.Kelley@faa.gov.

(Flight Operations Group, Flight Technologies and Procedures Division, Flight Standards Service, 7/18/2019)

REGION SPECIFIC

SPECIAL EMPHASIS ITEMS FOR OPERATIONS ON NORTH ATLANTIC TRACKS/ROUTES EMPLOYING REDUCED AIRCRAFT SEPARATION

The ICAO North Atlantic (NAT) region has implemented reduced aircraft separation, both longitudinally and laterally, between appropriately equipped and qualified aircraft. A trial of further reduced lateral separation began in October 2019 between ADS-B equipped aircraft flying in the NAT.

The purpose of this notice is to alert U.S. operators to a number of NAT OPS Bulletins published by the ICAO Europe/North Atlantic region office. (Anyone planning to fly across the NAT should read and become very familiar with the information contained in ALL current NAT OPS Bulletins.) The bulletins provide information on aircraft equipment and aircrew qualification requirements for taking advantage of the tracks and routes where air traffic controllers use reduced aircraft separation minimums. The bulletins also contain *special emphasis items* that should be part of aircrew training and operating procedures to enhance safety of operations in the NAT.

The bulletins most relevant to operations under reduced aircraft separation minimums are as follows:

Number 2019_002 *Trial Implementation of ASEPS (Lateral) using ADS-B*

Number 2018_005 *Special Procedures for In-flight Contingencies in Oceanic Airspace*

Number 2018_004 *Implementation of Performance Based Separation Minima—Expanded Publication of PBCS OTS*

Number 2018_003 *Waypoint Insertion/Verification Special Emphasis Items*

Special emphasis items covered in these bulletins include:

- Pilot training on map and FMC displays of ½ degree and whole degree waypoints
- **Required** pilot procedures for verifying waypoint degrees and minutes inserted into navigation systems
- Pilot in-flight contingency and weather deviation procedures

To reiterate, operators are strongly encouraged to review all the current NAT OPS Bulletins and include relevant information in their training programs and normal oceanic procedures. Use the information in the

bulletins hand in hand with the information published in the U.S. Aeronautical Information Publication (AIP).

Note: The emphasis items contained in bulletin 2018_003 are of value to safe operations in *any* oceanic airspace. ALL operators should provide the information contained therein to their oceanic flight crews.

Operators may find the bulletins on the ICAO EUR/NAT website (<https://www.icao.int/EURNAT/Pages/welcome.aspx>), then selecting *EUR/NAT Documents*, then *NAT Documents*, and then *NAT OPS Bulletins*.

(Flight Operations Group, Flight Technologies and Procedures Division, Flight Standards Service, January 2, 2020)

NORTH ATLANTIC DATA LINK MANDATE

MARCH 2020 UPDATE

1. Introduction.

a. This notice updates operators on the status of the International Civil Aviation Organization (ICAO) North Atlantic (NAT) region Data Link Mandate (DLM). The comprehensive source of information and guidance on the DLM is NAT OPS Bulletin 2017-1 (Revision 4) *NAT Common DLM AIC*, issued July 9, 2019. That bulletin is available free of charge at the ICAO Europe/North Atlantic region office website, under EUR & NAT Documents > NAT Documents > NAT Ops Bulletins. All U.S. operators intending flights in the NAT region should familiarize themselves with **all** the current NAT Ops Bulletins, and update operations manuals and training materials as applicable.

b. The NAT OPS Bulletin identifies specific airspace within the NAT region and specific types of flights that are exempt from the mandate. (Notably, the entire New York Oceanic CTA/FIR is exempt from the mandate.) Otherwise, as of **January 30, 2020 all aircraft operating between FL 290 to FL 410 inclusive, throughout the ICAO North Atlantic region, must be equipped with operable FANS 1/A (or equivalent) CPDLC and ADS-C equipment.**

2. Contingency Procedures. NAT OPS Bulletin 2017-1 provides procedures pilots should use in the event of data link equipment failure prior to and after departure, as well failures after entering DLM airspace. Aircraft separation standards within DLM airspace are based on fully operational data link equipment. Pilots must promptly notify ATC of any data link equipment failures prior to entering or while in DLM airspace.

3. U.S. Operator Authorization to Use FANS 1/A (or equivalent) Data Link Systems.

a. U.S. operators intending to fly in NAT DLM airspace must have been issued operational authorization via Operations Specification, Management Specification or Letter of Authorization (as appropriate) A056 *Data Link Communications*. Advisory Circular (AC) 90-117 *Data Link Communications* provides guidance on operational use, aircraft eligibility, minimum performance and services of communication service providers, performance monitoring, training requirements, and discrepancy reporting related to the use of data link communication systems.

b. Operators may also find helpful the information posted in the “FAA NAT Resource Guide for U.S. Operators,” under the Comm/Nav/Surveillance, Data Link Communications sections. Operators can find the resource guide at the following address:

https://www.faa.gov/about/office_org/headquarters_offices/avs/offices/afx/afs/afs400/afs410/media/NAT.pdf

4. Contacts.

- a. Aviation Safety Inspector Mark Patterson, Flight Technologies and Procedures Division, 202-267-8848, Mark.Patterson@faa.gov.
- b. Aviation Safety Inspector Madison Walton, Flight Technologies and Procedures Division, 202-267-8850, Madison.Walton@faa.gov.
- c. Senior Aviation Analyst Mark Wisniewski (SAIC), Flight Technologies and Procedures Division, 202-267-8843, Mark.ctr.Wisniewski@faa.gov.

(Flight Operations Group, Flight Technologies and Procedures Division, Flight Standards Service, March 2020)

SPECIAL NOTICE -- NAT ATS MESSAGE FORMAT

The following is submitted in an effort to standardize ATS message formats for air/ground communications in the North Atlantic (NAT) Region:

1. General

a. All NAT air-ground messages are categorized under one of the following headings (excluding emergency messages):

- (1) Position Report.
- (2) Request Clearance.
- (3) Revised Estimate.
- (4) Miscellaneous Message.

b. In order to enable ground stations to process messages in the shortest possible time, pilots should observe the following rules:

- (1) Use the correct type of message applicable to the data transmitted.
- (2) State the message type on the contact call to the ground station or at the start of the message.
- (3) Adhere strictly to the sequence of information for the type of message.
- (4) All times in each of the messages should be expressed in hours and minutes.

2. Description of ATS Message Types. Aircraft should transmit air-ground messages using standard RTF phraseology in accordance with the following:

- a. POSITION. To be used for routine position reports.

Content and Data Sequence

- (1) "POSITION."
- (2) Flight identification.
- (3) Present position.
- (4) Time over present position (hours and minutes).

- (5) Present flight level.
- (6) Next position on assigned route.
- (7) Estimated time for next position (hours and minutes).
- (8) Next subsequent position.
- (9) Any further information; e.g., MET data or Company message.

EXAMPLE-

“Position, SWISSAIR 100, 56N 010W 1235, flight level 330, estimating 56N 020W 1310, next 56N 030W”

b. REQUEST CLEARANCE.

(1) To be used, in conjunction with a routine position report, to request a change of mach number, flight level, or route and to request westbound oceanic clearance prior to entering Reykjavik, Santa Maria or Shanwick CTAs.

Content and Data Sequence

- (a) “REQUEST CLEARANCE.”
- (b) Flight identification.
- (c) Present or last reported position.
- (d) Time over present or last reported position (hours and minutes).
- (e) Present flight level.
- (f) Next position on assigned route or oceanic entry point.
- (g) Estimate for next position or oceanic entry point.
- (h) Next subsequent position.
- (i) Requested Mach number, flight level or route.
- (j) Further information or clarifying remarks.

EXAMPLE-

“Request clearance, TWA 801, 56N 020W 1245, flight level 330, estimating 56N 030W 1320, next 56N 040W, requesting flight level 350”

(2) To be used to request a change in Mach number, flight level, or route when a position report message is not appropriate.

Content and Data Sequence

- (a) “REQUEST CLEARANCE.”
- (b) Flight identification.
- (c) Requested Mach number, flight level or route.
- (d) Further information or clarifying remarks.

EXAMPLE–

“Request clearance, BAW 212, requesting flight level 370”

- c. REVISED ESTIMATE. To be used to update estimate for next position.

Content and Data Sequence

- (1) “Revised Estimate.”
- (2) Flight identification.
- (3) Next position on route.
- (4) Revised estimate for next position (hours and minutes).
- (5) Further information.

EXAMPLE–

“Revised estimate, WDA 523, 57N 040W 0325”

d. MISCELLANEOUS. To be used to pass information or make a request in plain language that does not conform with the content of other message formats. No message designator is required as this will be inserted by the ground station.

Content and Data Sequence

- (1) Flight identification.
- (2) General information or request in plain language and format free.

(ZNY, Updated 5/24/2018)

GULF OF MEXICO RNAV ROUTES Q100, Q102, AND Q105

This NOTAM defines RNAV equipment requirements for operators filing Q100, Q102, and Q105 through Gulf of Mexico airspace. Only aircraft approved for IFR Area Navigation operations will be cleared to operate on Q100, Q102, and Q105 between the surface and FL600 (inclusive).

Operator Determination of RNAV Equipment Eligibility

In accordance with Federal Aviation Regulations 91.511, 121.351, 125.203, and 135.165 (as applicable) an approved Long-Range Navigation System (INS, IRS, GPS or Loran C) is required for operation on these routes.

In addition, operators will not flight plan or operate on these routes unless their aircraft are equipped with RNAV systems that are approved for IFR navigation and the pilots are qualified to operate them. Aircraft may be considered eligible to operate on these routes if they fall under one of the following categories:

1. For new installations, the Airplane Flight Manual must show that the navigation system installation has received airworthiness approval in accordance with one of the following FAA ACs:

- a. AC 20-138, as amended (Airworthiness Approval of Positioning and Navigation Systems).
- b. AC 25-15 (Flight Management System [FMS] approval).

2. Installations that have previously received airworthiness approval under the following ACs are eligible for Gulf of Mexico Q-route operation provided it is shown in the Airplane Flight Manual:

- a. AC 90-45A (RNAV system approval).
- b. AC 20-130, as amended (Multi-Sensor Navigation system approval).

NOTE - INS LIMITATIONS. See paragraph 6, below.

Operational Requirements and Procedures

1. Class I Navigation: operations on Q100, Q102 and Q105 will continue to be categorized as Class I navigation, as defined in FAA Order 8900.1, Vol. 4, Chapter 1, Section 3, Class I Navigation.

2. Operations Specifications: operators are considered eligible to conduct operations on the Q-routes provided that aircraft are equipped with the appropriate equipment in accordance with the “Operator Determination of RNAV Equipment Eligibility” paragraph above and operations are conducted in accordance with paragraph 3, 4, 5 and 6 below. Title 14 CFR Parts 121, 125, 135 operators are authorized to operate on the Q-routes when they are issued Operations Specifications (OpSpecs) paragraph B034 (Class I Navigation Using Area Navigation Systems). In addition, OpSpecs B034 must be annotated in OpSpecs paragraph B050 (Enroute Authorizations, Limitations and Procedures), for the Gulf of Mexico High Offshore Airspace.

3. Pilots in command filing on RNAV routes are certifying that the crews and equipment are qualified to conduct RNAV operations.

4. Pilots in command must be responsible for navigating along route centerline (as defined by the aircraft navigation system) in accordance with the requirements of Title 14 CFR 91, section 181 (course to be flown) and ICAO Annex 2, paragraph 3.6.2.1.1. (Annex 2, paragraph 3.6.2.1 states that flights must “in so far as practical, when on an established ATS route, operate on the defined centerline of that route.”)

5. Pilots in command must notify the Air Route Traffic Control Center (ARTCC) of any loss of navigation capability that affects the aircraft’s ability to navigate within the lateral limits of the route.

6. INS or IRS LIMITATION. For the purposes of operating on the following RNAV routes, Q100, Q102, and Q105, aircraft equipped with Inertial Navigation Systems (INS) or Inertial Reference Systems (IRS) that cannot receive automatic position updates (e.g., DME/DME update) for the entire length of the route, are limited to 1.5 consecutive hours of un-updated operation. In preparation for take-off, this time starts at the time that the INS or IRS is placed in the navigation mode. En route, the maximum time allowed between automatic position updates is 1.5 hours. Systems that perform updating after the pilot has manually selected the navigation aid are considered to have ”automatic update” capability.

7. Radar monitoring will normally be provided. In the event of loss of radar, aircraft will be advised. ATC will ensure that the appropriate nonradar separation is applied during these time periods.

FAA Contacts

Scott Leis	202-267-3641	Scott.leis@faa.gov
Rudolph E. Lawrence	202-267-0116	Rudolph.lawrence@faa.gov

(Flight Operations Group, Flight Technologies and Procedures Division, Flight Standards Service, 3/26/20)

NORTH ATLANTIC TRIAL IMPLEMENTATION OF ASEPS (LATERAL) USING ADS-B

The ICAO North Atlantic (NAT) region is conducting trials of reduced aircraft separation minimums based on the use of ADS-B. The NAT region officially refers to these aircraft separation minimums as *Advanced Surveillance-Enhanced Procedural Separation (ASEPS)*. The trials, conducted exclusively in the Gander, Shanwick and Santa Maria Oceanic Control Areas (OCA), began in March 2019 with reduced longitudinal separation minimums. The NAT region will expand the trials to include reduced *lateral* separation minimums, again only in Gander, Shanwick and Santa Maria OCAs, beginning as early as October 10, 2019. During the trials, the participating OCAs may separate aircraft on non-intersecting tracks not less than 19 nautical miles (NM) laterally. Aircraft currently flying on Performance Based Communications and Surveillance (PBCS) tracks in the NAT region can experience lateral spacing limited to 23 NM.

Air traffic controllers for the Gander and Shanwick OCAs will use space based ADS-B for aircraft surveillance during the trials, while controllers for Santa Maria OCA will use their existing ground-based ADS-B network.

As with the PBCS tracks, ATC will limit application of reduced lateral spacing to aircraft whose flight plan indicates authorization for RNP 4, RCP 240, RSP 180, RVSM, and operations in the North Atlantic High Level Airspace (NAT HLA). The flight plan must also indicate equipage with ADS-B out (1090 MHz) (Item 10 codes B1 or B2) and FANS 1/A CPDLC SATCOM (Item 10 codes J5 or J7).

ICAO NAT OPS Bulletin 2019-002 *Trial Implementation of ASEPS (Lateral) Using ADS-B* is the comprehensive source of guidance and information on the trials. Operators may find this OPS Bulletin, as well as all active NAT OPS Bulletins at www.icao.int/EURNAT. Subsequently click on *EUR/NAT Documents*, then *NAT Region Documents*, then *NAT OPS Bulletins*.

Flight crews crossing the NAT may experience some new and/or non-standard terminology regarding *surveillance* of their aircraft, particularly as they enter or travel between trial participating OCAs. Regardless of the surveillance status terminology that flight crews hear or receive via CPDLC when in oceanic airspace, they must perform *all* their normal oceanic procedures.

The FAA *recommends* flight crews of U.S. aircraft opt out of the ASEPS reduced lateral separation trial if flying with less than a fully functioning TCAS (ACAS II). Flight crews should inform ATC that they have “no ACAS” either when requesting their oceanic clearance (voice or CPDLC), 30 minutes prior to crossing the Gander, Shanwick or Santa Maria OCA boundaries if entering from New York or Iceland oceanic airspace, or otherwise as soon as possible if ACAS failure occurs while in Gander, Shanwick or Santa Maria OCAs.

Strategic Lateral Offset Procedures (SLOP) remain in effect during ASEPS trials. For safety of operations, flight crews should always use SLOP while within oceanic airspace on their NAT crossing.

Operators who fly across the North Atlantic should ensure their pilots are aware of the reduced lateral separation trials and the information presented in both this notice and NAT OPS Bulletin 2019-002.

For questions regarding this notice contact the Flight Technologies and Procedures Division, 202-267-8790.

(Flight Operations Group, Flight Technologies and Procedures Division, Flight Standards Service, 8/15/19)

NORTH ATLANTIC OPERATIONS WITHOUT AN ASSIGNED FIXED SPEED

1. The purpose of the notice is to alert operators flying in the International Civil Aviation Organization (ICAO) North Atlantic (NAT) region of opportunities to fly other than a fixed speed. A speed assignment has long been a component of a NAT oceanic clearance. As a result of extensive coordination among NAT air navigation service providers (ANSP), operators may now have the opportunity to fly a variable speed, for all or a portion of their NAT oceanic crossing. NAT ANSPs are implementing operations without an assigned fixed speed as changes to their individual flight data processing systems and procedures allow. Therefore, the opportunities to fly other than a fixed speed will vary with the oceanic control area, traffic density, and direction of flight.

2. ICAO NAT OPS Bulletin 2019-1 *Operations Without an Assigned Fixed Speed in the NAT (OWAFS) Special Emphasis Items (SEI)*, issued July 9, 2019, is the comprehensive source of information on operations without an assigned fixed speed in the NAT. The bulletin includes an example operational scenario illustrating how a nominal oceanic flight crew may obtain clearance to fly other than a fixed assigned speed in the NAT. It is important to note that, in accordance with Title 14 of the Code of Federal Regulations, § 91.703, operators must observe the provisions of paragraph 3.6.2.2 of ICAO Annex 2. Operators should not interpret anything in the bulletin as authorizing a deviation from Annex 2.

3. Operators can obtain this bulletin, as well as all NAT OPS Bulletins, free of charge on the ICAO EUR/NAT website. Visitors to the website should select EUR/NAT Documents, then NAT Documents, then NAT OPS Bulletins to view the complete list of effective bulletins. All U.S. operators intending flights in the NAT region should familiarize themselves with **all** current NAT OPS Bulletins.

4. Operators may direct questions to Aviation Safety Inspector Madison Walton, Flight Technologies and Procedures Division, at 202-267-8850, or Madison.Walton@faa.gov.

(Flight Operations Group, Flight Technologies and Procedures Division, Flight Standards Service, 9/12/2019)

OPERATIONS OF AIRCRAFT WITHOUT AUTOMATIC DEPENDENT SURVEILLANCE – BROADCAST (ADS-B) OUT IN U.S. ADS-B OUT RULE AIRSPACE (OUTSIDE 48 CONTIGUOUS STATES)

Purpose: To describe FAA Air Traffic policy for aircraft operations without Automatic Dependent Surveillance-Broadcast Out (ADS-B Out) in United States sovereign airspace outside of the 48 Contiguous States.

Pursuant to 14 CFR § 91.225, when operating in Class A airspace an aircraft must:

1. Meet the performance requirements in TSO-C166b, Extended Squitter Automatic Dependent Surveillance-Broadcast (ADS-B) and Traffic Information Service-Broadcast (TIS-B) Equipment Operating on the Radio Frequency of 1090 Megahertz (MHz); and,
2. Meet the requirements of 14 CFR § 91.227.

For the purposes of § 91.225, Class A airspace is located within U.S. domestic airspace. U.S. domestic airspace exists over all land mass regions of the U.S. as defined in 14 CFR § 1.1 and includes the States (contiguous and non-contiguous), the District of Columbia, Puerto Rico, and the possessions, including the surrounding territorial waters.

NOTE-

Areas beyond 12 nautical miles from the U.S. coastline are considered part of International Civil Aviation Organization (ICAO) airspace. U.S. airspace regulations do not apply in these areas even if the FAA opts to apply domestic air traffic procedures.

Several U.S. territories in the Pacific and Caribbean region have Class A airspace defined over them. Per the Department of the Interior, Insular Affairs Policy Division, the U.S. possessions, or territories, in the Pacific and Caribbean regions include the following:

Caribbean: Navassa Island, Puerto Rico, U.S. Virgin Islands

Pacific: American Samoa, Baker Island, Guam, Howland Island, Jarvis Island, Johnston Atoll, Kingman Reef, Midway Atoll, Northern Mariana Islands, Palmyra Atoll, Wake Atoll.

For flight operations within the Class A domestic airspace of Puerto Rico, U.S. Virgin Islands, Guam, and the Northern Mariana Islands south of latitude North 17 degrees 49 minutes, the FAA notes the following expectations:

1. Operators without equipment meeting the performance requirements in TSO-C166b are expected to plan their routes of flight (including alternate airports) around this airspace; and

2. Operators without equipment meeting the performance requirements in TSO-C166b should train their flight crews to generally decline a voluntary ATC rerouting through this airspace unless required to safely operate their aircraft (e.g., in-flight emergencies, weather deviations, or diversions, etc.), advising ATC that they are not equipped with appropriate ADS-B avionics. If, however, ATC chooses to proceed with the new routing, the flight crew should accept and execute the clearance.

The remaining locations in the Pacific and Caribbean regions do not have FAA ADS-B or radar coverage at this time. The specific locations within the Pacific and Caribbean regions without coverage are: American Samoa, Baker Island, Howland Island, Jarvis Island, Johnston Atoll, Kingman Reef, Midway Atoll, Palmyra Atoll, Navassa Island, and the Northern Mariana Islands north of latitude North 17 degrees 49 minutes.

In airspace without FAA ADS-B or radar coverage, the FAA cannot provide (and does not provide) Air Traffic Service (ATS) surveillance services. Also, without ADS-B coverage, FAA has no practical means to detect violations of § 91.225. Therefore, until such coverage exists, FAA does not anticipate devoting its resources to identifying non-equipped aircraft briefly traversing these locations without FAA ADS-B or radar coverage.

(AJV-1, 10/10/2019)

TRIAL TO REMOVE FLIGHT PLANNING REQUIREMENT OF EASTBOUND NORTH AMERICAN ROUTES

Background

For several decades, eastbound aircraft transitioning from North America to Europe have been required to flight plan a North American Route (NAR) with the associated oceanic entry point (OEP) of their preferred oceanic track, as outlined in the U.S. Northeast Chart Supplement and *Canada Flight Supplement* (CFS).

Given the desire from operators to have the ability to flight plan more efficiently and optimize their routings, NAV CANADA and the Federal Aviation Administration (FAA) have embarked on a project to remove this flight planning requirement on a trial basis, as outlined below.

Trial Details

Beginning in January 2020, departures from several North American cities will have the ability to optimize their routings to the OEP. This will be a gradual introduction of departure points and operators as the trial moves forward in five stages. Additional departure airports may be considered as the trial moves forward and the impact of the change has been adequately evaluated.

Note: At all times, in every stage, departures must still comply with any departure routes, structures, and/or restrictions from the departure airport. Optimized routings can only begin from points within the Boston air route traffic control center (ARTCC), Moncton flight information region (FIR) airspace or both. Once inside the Boston ARTCC/Moncton FIR area, random routings to the OEP will be permitted. Flight paths of aircraft participating in the trial must remain at or north of a VITOL–LOMPI line. **The daily ZBW North Atlantic Advisory must be the primary method of communicating specifics of this trial.**

Stage Number	Date	Description
Stage 1	6 January 2020 to 19 January 2020	All flights operated by Air Canada, departing from CYYZ and CYUL, operating within the organized track structure (OTS) will not be required to file the associated NAR listed on the daily ZBW North Atlantic Advisory. Associated NARs are referenced under the “JFK Departures” section of the advisory.
Stage 2	20 January 2020 to 2 February 2020	All flights departing from CYYZ and CYUL, operating within the OTS, will not be required to file the associated NAR listed on the daily ZBW North Atlantic Advisory. Associated NARs are referenced under the “JFK Departures” section of the advisory.
Stage 3	3 February 2020 to 16 February 2020	All flights as indicated in Stage 1 and Stage 2 in addition to American airlines flights departing from KORD, operating within the OTS will not be required to file the associated NAR listed on the daily ZBW North Atlantic Advisory. Associated NARs are referenced under the “JFK Departures” section of the advisory.

Stage 4	17 February 2020 to 1 March 2020	All flights departing from CYYZ, CYUL and KORD, operating within the OTS will not be required to file the associated NAR listed on the daily ZBW North Atlantic Advisory. Associated NARs are referenced under the “JFK Departures” section of the advisory.
Stage 5	2 March 2020 to 16 March 2020	All flights departing from CYYZ, CYUL, KORD, KDTW and KMSF, operating within the OTS will not be required to file the associated NAR listed on the daily ZBW North Atlantic Advisory. Associated NARs are referenced under the “JFK Departures” section of the advisory.

ICAO NOTAMS will be issued in conjunction with each stage of this trial.

The trial may be discontinued at any time, based on the operational impact of the trial. If the trial is discontinued, dispatchers and operators must revert back to the OTS structure. Please refer to the daily ZBW North Atlantic Advisory for specific information and status of this trial.

Dispatchers must include “NO NARS EAST TRIAL” in the remarks section of flight plans for participating aircraft.

Flight crews are expected to carry applicable NAR documentation on the flight deck for all flights, regardless if participating in the trial or not.

For further information, please contact:

Steve Schmidt
Traffic Management Officer, Boston District
35 Northeastern Blvd.
Nashua, NH 03062
Office.: 1-603-879-6033
Operations: 1-603-879-6666
Support: 1-603-879-6808
E-mail: s.gunther.schmidt@faa.gov

NAV CANADA
Customer Service
77 Metcalfe Street
Ottawa, ON K1P 5L6

Tel.: 800-876-4693
Fax: 877-663-6656
E-mail: service@navcanada.ca

Part 2.

DOMESTIC NOTICES



Section 1. General

Automatic Dependent Surveillance – Broadcast (ADS-B) Out Preflight Responsibilities

For the most recent guidance, refer to Advisory Circular (AC) 90-114B, Automatic Dependent Surveillance–Broadcast Operations.

(Flight Operations Group, AFS-400, March 12, 2020)

COLD TEMPERATURE RESTRICTED AIRPORTS

Aug 15, 2019

Cold Temperature Altitude Corrections

Subject: Cold temperature altitude corrections at airports with a published cold temperature restriction.

Purpose: 1. To provide an updated list of 14 CFR Part 97 Cold Temperature Restricted Airports (CTRA) and segments designated with a temperature restriction; 2. Change the NTAP Segment(s) Method to the Individual Segment(s) Method; 3. Explain how to calculate and apply altitude corrections during cold temperature operations; 4. Explain how the All Segments Methods and Individual Segment(s) Method are used to make cold temperature altitude corrections.

This list may also be found at the bottom of the, “Terminal Procedures Basic Search” page. http://www.faa.gov/air_traffic/flight_info/aeronav/digital_products/dtpp/search/

Background: In response to aviation industry concerns over cold weather altimetry errors, the FAA conducted a risk analysis to determine if current 14 CFR Part 97 instrument approach procedures, in the United States National Airspace System, place aircraft at risk during cold temperature operations. This study applied the coldest recorded temperature at the given airports in the last five years and specifically determined if there was a probability that during these non-standard day operations, anticipated altitude errors in a barometric altimetry system could exceed the ROC used on procedure segment altitudes. If a probability, of the ROC being exceeded, went above one percent on a segment of the approach, a temperature restriction was applied to that segment. In addition to the low probability that these procedures will be required, the probability of the ROC being exceeded precisely at an obstacle position is extremely low, providing an even greater safety margin.

The 2019 list includes restricted temperatures based on standard Required Obstacle Clearance (ROC) values and values that account for additional altitude adjustments. These adjustments do not only reflect the minimum ROC for an approach segment based on terrain and/or an obstacle, but also an upward adjustment for other operational and/or ATC needs. These adjusted approach altitudes may result in the segment no longer being identified with a restriction or in a revised restricted temperature for the airport being published.

The CTRA risk analysis was only performed on airports of 2500 ft. and greater due to database constraints. Pilots must calculate a cold temperature altitude correction at any airport included in the airports list below. Pilots operating into an airport with a runway length less than 2500 feet may make a cold temperature altitude correction in cold temperature conditions, if desired. Pilots must advise ATC with the corrected altitude when applying altitude corrections on any approach segment with the exception of the final segment.

Identifying Cold Temperature Restricted Airport in the Terminal Procedure publication: Cold Temperature Restricted Airports are identified by a “snowflake” icon (E3) and temperature limit, in Celsius, i.e., E3 -30°C, on U.S. Government approach charts or a “textual” Note published on commercial charting publications.

All Segments Method: Pilots may correct all altitudes from the IAF altitude to the missed approach final holding altitude. Pilots familiar with the NTAP procedure for making altitude corrections and choosing to use the All Segments Method are only required to use the published “snowflake” icon E3 and associated temperature on the chart for making corrections. Pilots do not need to reference the restricted airports list in the NTAP or Terminal Procedures Basic Search” page. Calculations will be made based on the altitude at the Final Approach Fix (FAF)/Precision Final Approach Fix (PFAF), the Minimum Descent Altitude or Decision

Altitude (DA) and the Missed Approach (MA) final holding altitude. The calculations made at these fixes will be used to make altitude corrections on the other fixes in the applicable approach segment(s).

Individual Segment(s) Method: Pilots may correct only the required segment(s) indicated in this NTAP's restricted airports list. Pilots using the Individual Segment(s) Method will need to reference the restricted airports list to determine which segment(s) require a correction. Calculations will be made based on the altitude at the Final Approach Fix (FAF)/Precision Final Approach Fix (PFAF), the Minimum Descent Altitude or Decision Altitude (DA) and the Missed Approach (MA) final holding altitude. The calculations made at these fixes will be used to make altitude corrections on the other fixes in the applicable approach segment(s).

Actions:

When and where to correct: Pilots must make an altitude correction to the published, "at", "at or above" and "at or below" altitudes on all designated segment(s), for all published procedures and runways when the reported airport temperature is at or below the published airport cold temperature restriction on the approach plate. Pilots must advise ATC of the amount of altitude correction applied when correcting on any segment of the approach other than the final segment. ATC requires this information to ensure appropriate vertical separation between known traffic. Reference the **How to Apply Cold Temperature Altitude Corrections on an Approach** for examples and additional information.

Altitudes not corrected: ATC does not apply a cold temperature correction to Minimum Vectoring Altitude (MVA) charts. Pilots must request approval from ATC to apply a cold temperature correction to an ATC assigned altitude or an assigned altitude when flying on a radar vector in lieu of a published missed approach procedure. Pilots must not correct altitudes published on Standard Instrument Departures (SIDs), Obstacle Departure Procedures (ODPs) and Standard Terminal Arrivals (STARs).

Use of corrected MDA/DA: Pilots must use the corrected Minimum Descent Altitude (MDA) or Decision Altitude/ Decision Height (DA) as the minimum for an approach. Pilots must meet the requirements in 14 CFR Part 91.175 in order to operate below the corrected MDA or DA. Pilots must see and avoid obstacles when descending below the MDA.

Methods for Calculating Altitude Corrections: Pilots of aircraft **not equipped with** an RNAV system capable of temperature compensation must use the AIM 7-2-3, ICAO Cold Temperature Error Table to calculate a cold temperature altitude correction. The calculations for the approach will be calculated from three points on the approach:

NOTE: For the purpose of this procedure, when the FAF is referenced, it is the FAF altitude or the PFAF/Glideslope intercept altitude.

1. The FAF/PFAF will be used to calculate the correction to be applied to all altitudes from the FAF/PFAF:
 - a. Up to but not including the intermediate fix (IF) altitude for the Individual Segment(s) Method
 - b. Up to and including the initial approach fix (IAF) for the All Segments Method
2. The published MDA or DA will be used to calculate the correction to be applied to all altitudes in the final approach segment as applicable.
3. The final missed approach (MA) holding altitude will be used to calculate the correction to be applied to the final missed approach holding altitude only.

NOTE: Pilots may use Real Time Mesoscale Analysis (RTMA): Alternate Report of Surface Temperature, for computing altitude corrections, when airport temperatures are not available via normal reporting. See InFO 15006 for additional information,

http://www.faa.gov/other_visit/aviation_industry/airline_operators/airline_safety/info/all_infos/medi a/2015/info15006.pdf.

The RTMA website is http://nomads.ncep.noaa.gov/pub/data/nccf/com/rtma/prod/airport_temps/

Pilots of aircraft **equipped with** an RNAV system capable of temperature compensation, and choosing to use this system, must ensure the system is active and operating correctly. If the system is not operating correctly, or not being used, the pilot must manually calculate and apply a cold weather altitude correction using the AIM 7-2-3, ICAO Cold Temperature Error Table. The MDA/DA and step down fixes in the final segment will still require a manual correction.

PILOTS MUST NOT MAKE AN ALTIMETER CHANGE to accomplish an altitude correction. Pilots must ensure that the altimeter is set to the current altimeter setting provided by ATC in accordance with 14 CFR §91.121.

**ICAO COLD TEMPERATURE ERROR TABLE
HEIGHT ABOVE AIRPORT IN FEET**

	200	300	400	500	600	700	800	900	1000	1500	2000	3000	4000	5000
+10	10	10	10	10	20	20	20	20	20	30	40	60	80	90
0	20	20	30	30	40	40	50	50	60	90	120	170	230	280
-10	20	30	40	50	60	70	80	90	100	150	200	290	390	490
-20	30	50	60	70	90	100	120	130	140	210	280	420	570	710
-30	40	60	80	100	120	140	150	170	190	280	380	570	760	950
-40	50	80	100	120	150	170	190	220	240	360	480	720	970	1210
-50	60	90	120	150	180	210	240	270	300	450	590	890	1190	1500

Acceptable Use of Table:

Pilots may calculate a correction with a visual interpolation of the chart when using reported temperature and height above airport. This calculated altitude correction may then be rounded to the nearest whole hundred or rounded up. I.e., a correction of 130 ft. from the chart may be rounded to 100 ft. or 200 ft. A correction of 280 ft. will be rounded up to 300 ft. This rounded correction will be added to the FAF, all step-down fixes outside of the FAF and the IAF altitudes. The correction calculated from the MDA or DA may be used as is, rounded up, but never rounded down. This number will be added to the MDA, DA and all step-down fixes inside of the FAF as applicable. Do not round down when using the 5000 ft. column for calculated height above airport values greater than 5000 ft.

No extrapolation above the 5000 ft. column is required. Pilots may use the 5000 ft. “height above airport in feet” column for calculating corrections when the calculated altitude is greater than 5000 ft. above reporting station elevation. Pilots must add the correction(s) from the table to the affected segment altitude(s) and fly at the new corrected altitude.


It is important to understand that the correction from the table will place the aircraft back to an altitude based on a standard day. Although the techniques adopted in this NTAP to use the FAF altitude and MDA to correct the affected segment altitudes may not place the aircraft back to a standard day altitude on all fixes, a safe obstacle clearance will be maintained. These techniques have also been adopted to minimize the number of entries into the table while making corrections required by the pilot.

Additional Temperature Restrictions on IAP Charts: The charted temperature restriction for “uncompensated baro-VNAV systems” on 14 CFR Part 97 RNAV (GPS) and RNAV (RNP) Authorization Required (AR)

approach plates is independent of the temperature restriction established at a “Cold Temperature Restricted Airport”. The charted temperature restriction for an uncompensated baro–VNAV system is applicable when the LNAV/VNAV line of minima is used on an RNAV (GPS) approach. The temperature restriction for an uncompensated baro–VNAV system on an RNAV (RNP) AR approach applies to the entire procedure. Aircraft without a compensating baro–VNAV system may not use the LNAV/VNAV line of minima on the RNAV (GPS) approach when the actual temperature is above or below the charted baro–VNAV temperature restriction. For aircraft without a compensating baro–VNAV system, the RNAV (RNP) AR approach is not authorized when the actual temperature is above or below the charted baro–VNAV temperature restriction. In all cases, a cold temperature altitude correction must be applied when the actual temperature is at or below the cold temperature restricted airport temperature restriction.

How to Apply Cold Temperature Altitude Corrections on an Approach:

All Segments Method: All segments corrected from IAF through MA holding altitude:

Step 1: Determine if there is a published “snowflake” icon,  /CTRA temperature limit on the approach chart.

Step 2: If the reported airport temperature is at or below the published CTRA temperature limit, apply cold temperature altitude corrections to all published altitudes from the IAF altitude to the MA final holding altitude.

A Aircraft not equipped with a temperature compensating RNAV system or not using that system (use manual correction).

- All altitudes from the FAF/PFAF up to and including the IAF altitude: Calculate correction by taking FAF/PFAF altitude and subtracting the airport elevation. This number will be used to enter the height above airport in the ICAO table until reaching the reported temperature. Round this number as applicable and then add to all altitudes from the FAF altitude through the IAF altitude.
- All altitudes in final segment: Calculate correction by taking the MDA or DA for the approach being flown and subtract the airport elevation. This number will be used to enter the height above airport in the ICAO table until reaching the reported temperature. Use this number or round up. Add this number to MDA or DA/DH, as applicable, and any applicable step–down fixes in the final segment.
- Final holding altitude in the Missed Approach Segment: Calculate the correction by taking the final missed approach (MA) holding altitude and subtract the airport elevation. This number will be used to enter the height above airport in the ICAO table until reaching the reported temperature. Round this number as applicable and then add to the final MA altitude only.

B If flying an aircraft equipped with a RNAV system capable of temperature compensation, follow the instructions for applying temperature compensation provided in the AFM, AFM supplement, or RNAV system operating manual. Ensure that temperature compensation is active prior to the IAF and remains active through the entire approach. Manually calculate an altimetry correction for the MDA or DA. Determine an altimetry correction from the ICAO table based on the reported airport temperature and the height difference between the MDA or DA, as applicable, and the airport elevation.

NOTE: Some RNAV systems apply temperature compensation only to those altitudes associated with an instrument approach procedure loaded into the active flight plan while other systems apply temperature compensation to all procedure altitudes or user entered altitudes in the active flight plan,


including altitudes associated with a STAR. For those systems that apply temperature compensation to all altitudes in the active flight plan, delay activating temperature compensation until the aircraft has passed the last altitude constraint associated with the active STAR.

Step 3: For RNAV (GPS) approaches flown to the LNAV/VNAV line of minima using baro-VNAV vertical guidance, determine if there are published uncompensated baro-VNAV temperature limits. If the reported airport temperature is above or below the published limits, do not use the LNAV/VNAV line of minima unless the RNAV system is capable of temperature compensation and the system is active. Use an alternative line of minima (e.g., LNAV). CTRA correction must still be made on this approach if applicable.

Step 4: For RNAV (RNP) AR approaches, determine if there are uncompensated baro-VNAV temperature limits published on the approach. If the reported airport temperature is above or below the published temperature limits, the RNP (AR) approach may not be flown.

NOTE: When executing an approach with vertical guidance at a CTRA airport (i.e., ILS, LPV, LNAV/VNAV), pilots are reminded to follow the glideslope/glidepath as published when it is intersected inbound on the approach at the corrected altitude. The ILS glideslope and WAAS generated glidepath are unaffected by cold temperatures and will provide reliable vertical guidance to the corrected DA/DH. A baro-VNAV generated glidepath will be affected by cold temperatures and must be corrected when at or below the published temperature limit and using the LNAV/VNAV line of minima to DA/DH.

Individual Segment(s) method:

Step 1: Determine if there is a published “snowflake” icon,  /CTRA temperature limit on the approach chart.

Step 2: If the reported airport temperature is at or below the published CTRA temperature limit, apply cold temperature altitude corrections to all published altitudes, on the affected segment(s), listed in Cold Temperature Restricted Airports List.

A. Aircraft not equipped with a temperature compensating RNAV system or not using the system will make a manual correction using ICAO Cold Temperature Error Table.

- Intermediate Segment: All altitudes from the FAF/PFAF up to but not including the intermediate fix (IF) altitude. Calculate correction by taking FAF/PFAF altitude and subtracting the airport elevation. This number will be used to enter the height above airport in the ICAO table until reaching the reported temperature. Round this number as applicable and then add to FAF altitude and all step-down altitudes.
- Final segment: Calculate correction by taking the MDA or DA for the approach being flown and subtract the airport elevation. This number will be used to enter the height above airport in the ICAO table until reaching the reported temperature. Use this number or round up. Add this number to MDA or DA/DH, as applicable, and any applicable step-down fixes in the final segment.
- Missed Approach Segment: Calculate the correction by taking the final missed approach (MA) holding altitude and subtract the airport elevation. This number will be used to enter the height above airport in the ICAO table until reaching the reported temperature. Round this number as applicable and then add to the final MA altitude only.

B. If flying an aircraft equipped with a RNAV system capable of temperature compensation, follow the instructions for applying temperature compensation provided in the AFM, AFM supplement, or

RNAV system operating manual. Ensure that temperature compensation is active on the segment being corrected. Manually calculate an altimetry correction for the MDA or DA. Determine an altimetry correction from the ICAO table based on the reported airport temperature and the height difference between the MDA or DA, as applicable, and the airport elevation.

NOTE: Some RNAV systems apply temperature compensation only to those altitudes associated with an instrument approach procedure loaded into the active flight plan while other systems apply temperature compensation to all procedure altitudes or user entered altitudes in the active flight plan, including altitudes associated with a STAR. For those systems that apply temperature compensation to all altitudes in the active flight plan, delay activating temperature compensation until the aircraft has passed the last altitude constraint associated with the active STAR.

Step 3: For RNAV (GPS) approaches flown to the LNAV/VNAV line of minima using baro-VNAV vertical guidance, determine if there are published uncompensated baro-VNAV temperature limits. If the reported airport temperature is above or below the published limits, do not use the LNAV/VNAV line of minima unless the RNAV system is capable of temperature compensation and the system is active. Use an alternative line of minima (e.g., LNAV). CTRA correction must still be made on this approach if applicable.

Step 4: For RNAV (RNP) AR approaches, determine if there are uncompensated baro-VNAV temperature limits published on the approach. If the reported airport temperature is above or below the published temperature limits, the RNP (AR) approach may not be flown.

NOTE: When executing an approach with vertical guidance at a CTRA airport (i.e., ILS, LPV, LNAV/VNAV), pilots are reminded to follow the glideslope/glidepath as published when it is intersected inbound on the approach at the corrected altitude. The ILS glideslope and WAAS generated glidepath are unaffected by cold temperatures and will provide reliable vertical guidance to the corrected DA/DH. A baro-VNAV generated glidepath will be affected by cold temperatures and must be corrected when at or below the published temperature limit and using the LNAV/VNAV line of minima to DA/DH.

Communication: Pilots must request approval from ATC whenever applying a cold temperature altitude correction. Pilots do not need to inform ATC of the final approach segment correction (i.e., new MDA or DA/DH). This report should be provided on initial radio contact with the ATC facility issuing approach clearance. ATC requires this information in order to ensure appropriate vertical separation between known traffic. Pilots should query ATC when vectored altitudes to a segment are lower than the requested corrected altitude. Pilots are encouraged to self-announce corrected altitude when flying into non-towered airfields.

The following are examples of appropriate pilot-to-ATC communication when applying cold-temperature altitude corrections.

- On initial check-in with ATC providing approach clearance: Hayden, CO (example below).
 - Vectors to final approach course: Outside of PICIN: *“Request 12100 ft. for cold temperature operations.”*
 - Vectors to final approach course: Inside of PICIN: *“Request 10600 ft. for cold temperature operations.”*
 - Missed Approach segment: *“Require final holding altitude, 10600 ft. on missed approach for cold temperature operations.”*
- Pilots cleared by ATC for an instrument approach procedure; “Cleared the RNAV RWY 28 approach (from any IAF)”. Hayden, CO (example below).
 - IAF: *“Request 13600 for cold temperature operations at TUSKK, TILLI or HIPNA”*

For additional information contact Kel Christianson, Flight Operations Group, at 202-267-8838.

Cold Temperature Restricted Airports: Airports are listed by ICAO code, Airport Name, Temperature Restriction in Celsius. The temperature will be indicated on Airport IAPs next to a snowflake symbol, ❄-XX°C in the United States Terminal Procedure Publication (TPP).

Identifier	Airport Name	Temperature	Affected Segment		
			Intermediate	Final	Missed Appr
Alaska					
PABL	Buckland	-36C	X		
PABR	Wiley Post-Will Rogers	-42C	X		
PABT	Bettles	-37C	X	X	
PACE	Central	-43C	X	X	
PACH	Chuathbaluk	-34C		X	
PACI	Chalkyitsik	-32C	X		
PACM	Scammon Bay	-21C		X	
PACX	Coldfoot	-11C	X	X	
PADE	Deering	-39C		X	
PADM	Marshall Don Hunter Sr	-28C		X	
PAEG	Eagle	-49C	X		
PAEN	Kenai	-31C	X		
PAFA	Fairbanks Intl	-45C	X		
PAFM	Ambler	-35C		X	
PAGA	Edward G. Pitka Sr	-33C	X		
PAGH	Shungnak	-44C	X		
PAGK	Gulkana	-37C	X		
PAGM	Gambell	-26C		X	
PAHC	Holy Cross	-29C		X	
PAHV	Healy River	-11C	X	X	
PAHX	Shageluk	-37C	X		
PAIK	Bob Baker Memorial	-28C	X	X	
PAIL	Iliamna	-23C	X		
PAIW	Wales	-12C		X	
PAJN	Juneau Intl	-15C	X		
PAKN	King Salmon	-31C	X		
PAKP	Anaktuvuk	-31C	X		
PAKV	Kaltag	-32C	X	X	
PALG	Kalskag	-42C	X		
PAMB	Manokotak	-34C	X		
PAMH	Minchumina	-37C		X	
PAMK	St Michael	-37C	X		
PANA	Napakiak	-37C	X		
PANI	Aniak	-34C		X	
PANN	Nenana Muni	-43C	X		
PANV	Anvik	-32C	X		
PAOM	Nome	-34C	X		

Identifier	Airport Name	Temperature	Intermediate	Final	Missed Appr
PAOR	Northway	-41C	X		
PAOT	Ralph Wien Memorial	-44C	X		
PAQH	Quinhagak	-36C	X		
PAQT	Nuiqsut	-41C	X		
PARC	Artic Village	-46C	X		
PARS	Russian Mission	-18C	X	X	
PARY	Ruby	-33C	X	X	
PASC	Deadhorse	-45C	X		
PASK	Selawik	-36C	X		X
PATA	Ralph M Calhoun Memorial	-51C		X	
PATQ	Atkasuk Edward Burnell Sr. Mem	-43C	X		
PAUN	Unalakleet	-39C	X		
PAVD	Valdez Pioneer Field	-11C	X		
PAVE	Venetie	-42C	X		
PAVL	Kivalina	-34C	X		
PAWB	Beaver	-42C	X		
PAWD	Seward	-5C	X		
PAWG	Wrangell	-5C		X	
PAWI	Wainwright	-42C	X		
PAWS	Wasilla	-31C	X		
PFAL	Allakaket	-44C	X		
PFCL	Clarks Point	-34C	X		
PFEL	Elim	-29C		X	
PFKT	Brevig Mission	-26C	X		
PFKU	Koyukuk	-25C		X	
PFKW	Kwethluk	-38C	X		
PFSH	Shaktolik	-35C	X		
PFYU	Fort Yukon	-45C	X	X	
California					
KSVE	Susanville Muni	-22C	X	X	
KTRK	Truckee – Tahoe	-13C	X	X	
O02	Nervino	-14C		X	
Colorado					
KAEJ	Central Colorado Rgnl	-17C		X	
KASE	Aspen–Pitkin County/Sardy Field	-26C	X		
KCAG	Craig–Moffat	-26C		X	
KEEO	Meeker Coulter Field	-25C		X	
KEGE	Eagle County Rgnl	-18C	X		
KGUC	Gunnison–Crested Butte Rgnl	-28C	X		
KHDN	Yampa Valley	-30C		X	
KLXV	Lake County	-27C		X	

Identifier	Airport Name	Temperature	Intermediate	Final	Missed Appr
KRIL	Garfield County Rgnl	-15C	X	X	
KSBS	Steamboat Springs/Bob Adams Fld	-32C	X		
KTAD	Perry Stokes	-26C	X		
20V	Mc Elroy Airfield	-21C		X	
<u>Idaho</u>					
KMYL	McCall Muni	-21C	X		
KSMN	Lemhi County	-14C	X	X	
KSUN	Friedman Memorial	-16C		X	
65S	Boundary County	-8C		X	
<u>Indiana</u>					
KSMD	Smith Field	-24C		X	
<u>Iowa</u>					
KAMW	Ames Muni	-27C	X		
KSPW	Spencer Muni	-32C	X		
<u>Kansas</u>					
KDDC	Dodge City Rgnl	-20C		X	
<u>Kentucky</u>					
KBYL	Williamsburg-Whitley County	-21C		X	
<u>Maine</u>					
KPQI	Northern Maine Rgnl	-30C	X		
<u>Massachusetts</u>					
KBAF	Westfield-Barnes Regional	-21C		X	
KFIT	Fitchburg Muni	-25C		X	
<u>Michigan</u>					
KAPN	Alpena County Rgnl	-32C	X		
KIWD	Gogebic-Iron County	-27C		X	
KPLN	Pellston Rgnl of Emmet County	-33C		X	
KTVC	Cherry Capital	-20C		X	
<u>Minnesota</u>					
KBFW	Silver Bay Municipal	-35C	X	X	
KCKC	Grand Marais/Cook County	-30C			X
KCQM	Cook Muni	-38C	X		
KELO	Ely Muni	-39C	X		
KHIB	Range Rgnl	-31C	X		
KINL	Falls Intl	-31C	X		
KRRT	Warroad Intl Memorial	-37C	X		
<u>Montana</u>					
KBTM	Bert Mooney	-19C	X	X	
KBZN	Bozeman Yellowstone Intl	-33C	X		
KGTF	Great Falls Intl	-33C	X		
KHLN	Helena Rgnl	-21C	X	X	

Identifier	Airport Name	Temperature	Intermediate	Final	Missed Appr
KHVR	Havre City–County	–30C			X
KMSO	Missoula Intl	–17C	X	X	
KOLF	L M Clayton	–38C	X		
KSBX	Shelby	–31C			X
KWYS	Yellowstone	–19C	X	X	
M46	Colstrip	–32C	X		
M75	Malta	–37C	X		
3U3	Bowman Field	–33C	X		
6S5	Ravalli County	–30C			X
6S8	Laurel Municipal	–30C	X		
<u>Nebraska</u>					
KCDR	Chadron Muni	–32C	X		
<u>Nevada</u>					
KEKO	Elko Rgnl	–24C		X	
KELY	Ely (Yelland Field)	–31C	X		
KRNO	Reno/Tahoe Intl	–15C		X	
KRTS	Reno/Stead	–15C		X	
<u>New Hampshire</u>					
KBML	Berlin Rgnl	–29C		X	
KCNH	Claremont Muni	–27C		X	
KHIE	Mount Washington Rgnl	–29C		X	
KLEB	Lebanon Muni	–20C	X	X	
<u>New Mexico</u>					
KAXX	Angel Fire	–31C	X		
<u>New York</u>					
KART	Watertown Intl	–37C	X		
KDKK	Chautauqua County/Dunkirk	–20C		X	
KELM	Elmira/Corning Rgnl	–17C		X	
KGFL	Floyd Bennett Memorial	–18C	X	X	
KITH	Ithaca Tompkins Rgnl	–19C		X	
KLKP	Lake Placid	–16C		X	
KSLK	Adirondack Rgnl	–29C		X	
4B6	Ticonderoga Muni	–29C		X	
<u>North Carolina</u>					
KRHP	Western Carolina Rgnl	–8C		X	
<u>North Dakota</u>					
KBIS	Bismarck	–35C	X		
KDIK	Dickinson–Theodore Roosevelt Rgnl	–30C	X		
KISN	Sloulin Field Intl	–36C	X		
<u>Ohio</u>					
KBKL	Burke Lakefront	–23C		X	

Identifier	Airport Name	Temperature	Intermediate	Final	Missed Appr
<u>Oregon</u>					
KLGD	La Grande/Union County	-16C		X	
KMFR	Rogue Valley Intl-Medford	-5C	X		
KPDT	Eastern Oregon Rgnl at Pendleton	-22C	X		
<u>Pennsylvania</u>					
KIPT	Williamsport Rgnl	-14C		X	
KSEG	Penn Valley	-14C		X	
N27	Bradford County	-25C		X	
<u>South Dakota</u>					
KIEN	Pine Ridge	-33C		X	
KMBG	Mobridge Muni	-31C	X		
<u>Tennessee</u>					
KMOR	Moore-Murrell	-22C		X	
0A9	Elizabethton Muni	-12C		X	
6A4	Mountain City/Johnson County	-12C		X	
<u>Utah</u>					
KBCE	Bryce Canyon Airport	-30C	X		
KENV	Wendover	-12C	X		
KLGU	Logan-Cache	-15C	X		
KRIF	Richfield Muni	-29C	X		
KSGU	St George Muni	-17C	X		
KVEL	Vernal Rgnl	-27C		X	
U55	Panguitch Municipal	-28C	X		
<u>Vermont</u>					
KBTV	Burlington Intl	-15C	X		
KDDH	William H. Morse State	-13C		X	
KEFK	Newport State	-30C	X		
KMPV	Edward F. Knapp State	-20C	X		
KMVL	Morrisville-Stowe State	-30C	X		
KRUT	Rutland-Southern Vermont Rgnl	-8C		X	
KVSF	Hartness State (Springfield)	-24C		X	
<u>Virginia</u>					
KROA	Roanoke Rgnl/Woodrum Field	-13C		X	
KVBW	Bridgewater Air Park	-20C	X		
<u>Washington St.</u>					
KEAT	Pangborn Memorial	-7C	X		
KOMK	Omak	-15C		X	
<u>West Virginia</u>					
KEKN	Elkins-Randolph County Jennings Randolph Field	-17C		X	

Identifier	Airport Name	Temperature	Intermediate	Final	Missed Appr
W99	Grant County	-9C		X	
12V	Ona Airpark	-25C	X		
312	Point Pleasant/Mason County	-18C		X	
<u>Wisconsin</u>					
KASX	John F. Kennedy Memorial	-31C	X		
KCMY	Sparta/Fort McCoy	-33C	X		
KLSE	La Crosse Muni	-20C		X	
KOVS	Boscobel	-31C		X	
KRHI	Rhineland-Oneida County	-31C	X		
KRPD	Rice Lake Rgnl-Carl's Field	-35C	X		
4R5	Major Gilbert Field	-30C	X		
<u>Wyoming</u>					
KAFO	Afton Municipal Airport	-22C		X	
KCOD	Yellowstone Rgnl	-31C	X		
KDWX	Dixon	-38C		X	
KEMM	Kemmerer Muni	-35C	X		
KGEY	South Big Horn County	-33C	X	X	
KHSG	Hot Springs County	-36C	X		
KJAC	Jackson Hole	-26C	X	X	
KLAR	Laramie Rgnl	-35C	X		
KSHR	Sheridan County	-24C	X		
KWRL	Worland Muni	-33C			X
W43	Hulett Muni	-34C	X		

Additional Information: The following military airfields meet the criteria to be identified as a Cold Temperature Restricted Airport using the FAA cold temperature model. USAF, USA, USM, USN and USCG are not required to adhere to the procedures found in this NTAP at these airfields. This information is applicable to FAA authorized operators operating into these airfields.

Identifier	Airport Name	Temperature	Intermediate	Final	Missed Appr
KGTB	Wheeler-Sack AAF	-29C	X		
KRYM	Ray S. Miller AAF	-34C	X		
PAEI	Eielson AFB	-37C	X		X
PAFB	Ladd AAF	-33C	X		X
PAIM	Indian Mountain LRRS	-44C	X		
PALU	Cape Lisburne LRRS	-34C	X		
PASV	Sparrevohn LRRS	-21C	X		
PATC	Tin City LRRS	-37C	X		
PATL	Tatalina LRRS	-21C	X		X
PPIZ	Point Lay LRRS	-41C	X		

See the following examples for identifying and applying altitude corrections.

All Segments Method: All segments corrected from IAF through MA holding altitude.

Hayden/Yampa Valley (KHDN), Colorado. Reported Temperature -30°C : RNAV (GPS) RWY 28

Uncompensated Baro-VNAV System or Manual Method:

1. Cold Temperature Restricted Airport Temperature Limit: -30°C
2. Altitude at the Final Approach Fix (FAF) (BEEAR) = 10000 ft.
3. Airport elevation = 6606 ft.
4. Difference: 10000 ft. – 6606 ft. = 3394 ft.
5. Use the AIM 7-2-3 ICAO Cold Temperature Error Table for a height above airport of 3394 ft. and -30°C . Visual interpolation is approximately 600 ft. Actual interpolation is 645 ft. Add 600 ft. to the FAF and all procedure altitudes outside of the FAF up to and including IAF altitude:
 - TUSKK (IAF), TILLJ (IAF) and HIPNA (IAF HILO): 13000 + 600 = 13600 ft.
 - PICIN (stepdown fix): 11500 + 600 = 12100 ft.
 - BEEAR (FAF): 10000 + 600 = 10600 ft.
6. Correct altitudes within the final segment altitude based on the minima used. LP MDA = 7080 ft.
7. Difference: 7080 ft. – 6606 ft. = 474 ft.
8. AIM 7-2-3 Table: 474 ft. at -30°C is approximately 90ft. Use 90 ft. or round up to 100 ft.
9. Add corrections to altitudes up to but not including the FAF:
 - DICEV (stepdown fix): 8400 + 90 = 8490 ft.
 - BUYYA (stepdown fix): 7860 + 90 = 7950 ft.
 - LP MDA: 7080 + 90 = 7170 ft.
10. Correct MEKWY/Missed Approach Holding Altitude: MA altitude is same as BEEAR (10000); therefore, the same table calculation in step 5 may be used at MEKWY. Take 600 ft. correction for 10000 ft. and add to MA holding altitude:
 - MEKWY: 10000 + 600 = 10600 ft.

Compensated Baro-VNAV System:

Operators using a temperature compensating RNAV system to make altitude corrections will be set to the current airport temperature (-30°C) and activated prior to the passing the IAF. A manual calculation of the cold temperature altitude correction is required for the MDA/DA. Although using the temperature compensating system should provide clearance over step-down fixes on any segment, a correction will be added to all applicable step-down fixes and monitored during descent to ensure aircraft will be “at” or “above” the corrected step-down fix altitude during the approach.

Individual Segments Method: Final segment required.

Hayden/Yampa Valley (KHDN), Colorado. Reported Temperature -30°C : RNAV (GPS) RWY 28.

Uncompensated Baro-VNAV System or Manual Method:

1. Cold Temperature Restricted Airport Temperature Limit: -30°C
2. Airport elevation = 6606 ft.
3. Correct altitudes within the final segment altitude based on the minima used. LP MDA = 7080 ft.
4. Difference: 7080 ft. – 6606 ft. = 474 ft.
5. AIM 7-2-3 Table: 474 ft. at -30°C is approximately 90ft. Use 90 ft. or round up to 100 ft.
6. Add corrections to MDA and all stepdown fix altitudes in final segment up to but not including the FAF:
 - DICEV (stepdown fix): 8400 + 90 = 8490 ft.
 - BUYYA (stepdown fix): 7860 + 90 = 7950 ft.
 - LP MDA: 7080 + 90 = 7170

Compensated Baro-VNAV System:

Operators using a temperature compensating RNAV system to make altitude corrections will set the current airport temperature (-30°C) and activate the system for the required segment(s). A manual calculation of the cold temperature altitude correction is required for the MDA/DA. Although using the temperature compensating system should provide clearance over step-down fixes on any segment, a correction will be added to all applicable step-down fixes and monitored during descent to ensure aircraft will be “at” or “above” the corrected step-down fix altitude during the approach.

HAYDEN, COLORADO

AL-5983 (FAA)

18340

WAAS CH 48825 W28A	APP CRS 303°	Rwy ldg TDZE 6606 Apt Elev 6606
--	------------------------	---

RNAV (GPS) RWY 28
YAMPA VALLEY (HDN)

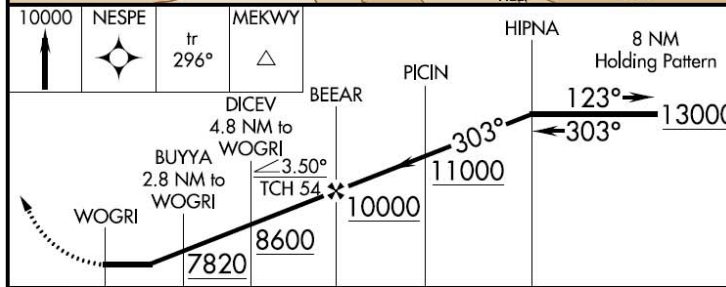
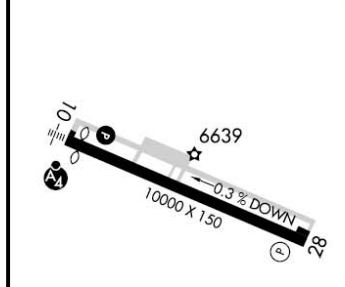
RNP APCH. When local altimeter not received use Craig-Moffat altimeter setting and increase all MDA 100 feet, increase LP and LNAV Cat C/D visibility ¼ mile. -30°C Rwy 28 helicopter visibility reduction below ¾ SM NA.		MISSED APPROACH: Climb to 10000 direct NESPE and on track 296° to MEKWY and hold.
AWOS-3PT 119.275	DENVER CENTER 120.475 235.975	UNICOM 123.0 (CTAF)



SW-1, 28 MAR 2019 to 25 APR 2019

SW-1, 28 MAR 2019 to 25 APR 2019

ELEV 6606	D	TDZE 6606
-----------	----------	-----------



	A	B	C	D
CATEGORY	A	B	C	D
LP MDA	7000-1	394 (400-1)	7000-1½	394 (400-1½)
LNAV MDA	7080-1	474 (500-1)	7080-1¾	474 (500-1¾)
C CIRCLING	7220-1	614 (700-1)	7660-3 1054 (1100-3)	8180-3 1574 (1600-3)

HAYDEN, COLORADO
Amdt 3A 06DEC18

40°29'N-107°13'W

YAMPA VALLEY (HDN)
RNAV (GPS) RWY 28

All Segments Method: All segments corrected from IAF through MA holding altitude.

(KMFR) Rogue Valley Intl–Medford, Oregon. Reported Temperature -5°C : RNAV (RNP) RWY 32.

Uncompensated Baro–VNAV System or Manual Method:

1. Cold Temperature Restricted Airport Temperature Limit: -5°C
2. Altitude at the Final Approach Fix (FAF) (CUNBA) = 2600 ft.
3. Airport elevation = 1335 ft.
4. Difference: 2600 ft. – 1335 ft. = 1265 ft.
5. Use the AIM 7–2–3 ICAO Cold Temperature Error Table for a height above airport of 1265 ft. and -5°C . The approximate calculation is 100 ft. Add the correction to the FAF and all procedure altitudes outside of the FAF up to and including IAF altitude:
 - BAYTS (IAF): $9100 + 100 = 9200$, ZUNAS (IAF): $7400 + 100 = 7500$, ACLOB (IAF): $7700 + 100 = 7800$, SAMIE (IAF): $7300 + 100 = 7400$
 - All Stepdown fixes between FILPU and the IAFs (BAYTS, ZUNAS, ACLOB and SAMIE).
 - OMACO (9200), NIGEE (7500), IPAGY (7500), HIDVO (6200)
 - NIGEE (7500), IPAGY (7500), HIDVO (6200)
 - KUSNE (7800), INITY (7700), HIDVO (6200)
 - RURTE (7400), ZIDAX (7400), WONIG (6700), PUNRE (5700)
 - FILPU (IF): $4600 + 100 = 4700$
 - ERBAW (Stepdown Fix): $3800 + 100 = 3900$ ft.
 - CUNBA (PFAF): $2600 + 100 = 2700$ ft.
6. Correct altitudes within the final segment altitude based on the minima used. RNP 0.15 DA = 1609 ft. or RNP 0.30 DA 1661 ft.
7. Difference: 1609 ft. – 1335 ft. = 274 ft.
8. AIM 7–2–3 Table: 274 ft. at -5°C is approximately 25 ft. Use 25 ft. or round up to 100 ft. for correction.
 - Add correction to RNP 0.15 DA: $1609 \text{ ft.} + 25 \text{ ft.} = 1634 \text{ ft.}$
9. Correction at CUTTR: Take final holding altitude and subtract field elevation: $9000 - 1335 = 7665$ ft. Using table, 5000 ft height above airport and -5°C correction is approximately 230 ft. Round up to 300 ft.
 - Missed Approach Holding Altitude/CUTTR: $9000 + 300 = 9300$ ft.

If the airport temperature decreases below -8°C , an uncompensated baro–VNAV system may not be used to fly this RNAV (RNP) approach. Cold temperature correction is still required on all segments for all other non RNAV (RNP) approaches flown at this airport.

Compensated Baro–VNAV System:

Operators using a temperature compensating RNAV system to make altitude corrections will be set to the current airport temperature (-5°C) and activated prior to the passing the IAF. A manual calculation of the cold temperature altitude correction is required for the MDA/DA. At temperatures below -8°C , a compensating baro–VNAV system must be on and active to fly the RNAV (RNP) approach. Manual calculation of a cold temperature compensated MDA or DA, as applicable, is still required. Cold temperature correction is still required on all segments.

Individual Segment(s) method: Intermediate segment required

(KMFR) Rogue Valley Intl–Medford. Reported Temperature -5°C : RNAV (RNP) RWY 32.

Uncompensated Baro–VNAV System or Manual Method:

1. Cold Temperature Restricted Airport Temperature Limit: -5°C
2. Altitude at the PFAF (CUNBA) = 2600 ft.
3. Airport elevation = 1335 ft.
4. Difference: $2600\text{ ft.} - 1335\text{ ft.} = 1265\text{ ft.}$
5. Use the AIM 7-2-3 ICAO Cold Temperature Error Table for a height above airport of 1265 ft. and -5°C . The approximate calculation is 100 ft. Add the correction to the FAF and all procedure altitudes outside of the FAF up to but not including IF:
 - ERBAW (Stepdown Fix): $3800 + 100 = 3900\text{ ft}$
 - CUNBA (PFAF): $2600 + 100 = 2700\text{ ft.}$

If the airport temperature decreases below -8°C , an uncompensated baro-VNAV system may not be used to fly this approach. Cold temperature correction is still required on the intermediate segment for all other non RNAV (RNP) approaches flown at this airport.

Compensated Baro-VNAV System:

Operators using a temperature compensating RNAV system to make altitude corrections will set the current airport temperature (-5°C) and activate the system for the intermediate segment. At temperatures below -8°C , baro-VNAV temperature compensation must be on and active to fly this approach. Manual calculation of a cold temperature compensated MDA or DA, as applicable, is still required. Cold temperature correction is still required on the intermediate segment.

MEDFORD, OREGON

AL-251 (FAA)

18060

APP CRS	Rwy Idg	8800
323°	TDZE	1335
	Apt Elev	1335

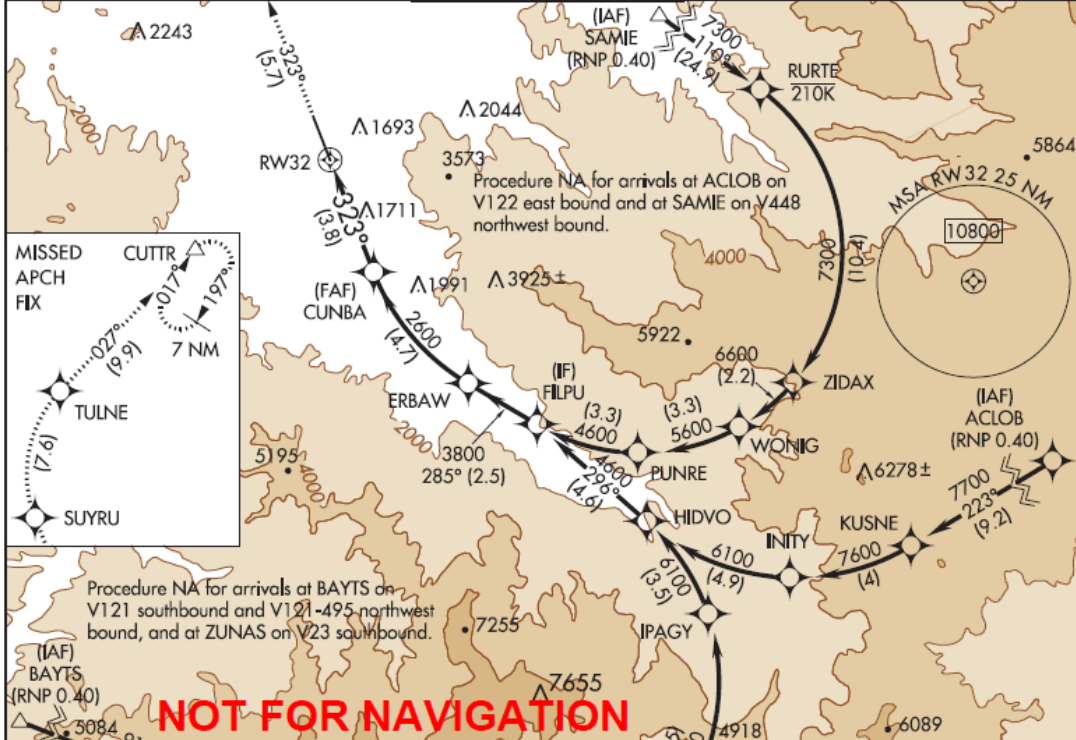
RNAV (RNP) RWY 32

ROGUE VALLEY INTL-MEDFORD (MFR)

GPS required. RF required. For uncompensated Baro-VNAV systems, procedure NA below -8°C (17°F) or above 45°C (113°F).

MISSED APPROACH: Climb to 9000 on track 323° to SUYRU, right turn to TULNE, then on track 027° to CUTTR and hold, continue climb-in-hold to 9000.

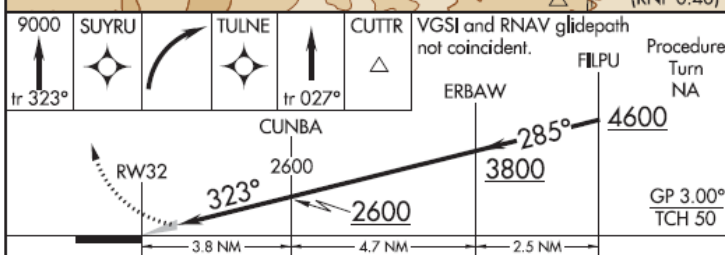
ATIS	CASCADE APP CON *	MEDFORD TOWER *	GND CON	UNICOM
127.25	124.3 379.9	119.4 (CTAF) 0 257.8	121.8	122.95



NW-1, 24 MAY 2018 to 21 JUN 2018

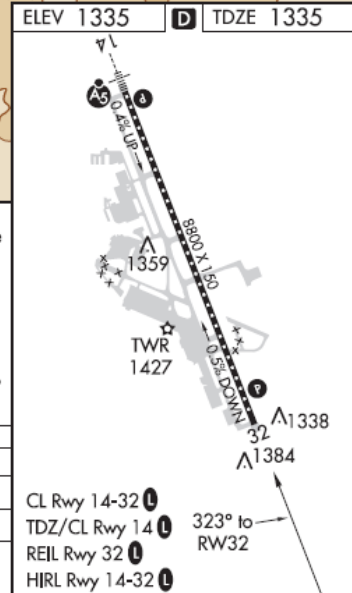
NW-1, 24 MAY 2018 to 21 JUN 2018

9000	SUYRU	TULNE	CUTTR	VGSI and RNAV glidepath not coincident.	FILPU	Procedure Turn NA
↑ tr 323°	◆	◆	△			



CATEGORY	A	B	C	D
RNP 0.15 DA		1609-1	274 (300-1)	
RNP 0.30 DA		1661-1	326 (400-1)	

AUTHORIZATION REQUIRED



MEDFORD, OREGON
Orig-A 30JUN11

42°22'N-122°52'W

ROGUE VALLEY INTL-MEDFORD (MFR)
RNAV (RNP) RWY 32

All Segments Method: All segments corrected from IAF through MA holding altitude.

(KMFR) Rogue Valley Intl–Medford, Oregon. Reported Temperature -5°C ILS or LOC/DME RWY 14.

Uncompensated Baro–VNAV System or Manual Method:

1. Cold Temperature Restricted Airport Temperature Limit: -5°C
2. Altitude at the FAF (OSSAJ) = 3800 ft.
3. Airport elevation = 1335 ft.
4. Difference: $3800\text{ ft.} - 1335\text{ ft.} = 2465\text{ ft.}$
5. Use the AIM 7–2–3 ICAO Cold Temperature Error Table for a height above airport of 2465 ft. and -5°C . The approximate calculation is 200 ft.
6. Add the correction to the FAF and all procedure altitudes outside of the FAF up to and including IAF altitudes:
 - SAMIE (IAF): $6000 + 200 = 6200\text{ ft.}$
 - FISTA (IF): $5900 + 200 = 6100\text{ ft.}$
 - AMASE (stepdown fix): $4700 + 200 = 4900\text{ ft.}$
 - OSSAJ (FAF): $3800 + 200 = 4000\text{ ft.}$
7. Correct altitudes in the final segment based on the minima used. ILS DA(H): 1503 ft.
8. Difference: $1503\text{ ft.} - 1335\text{ ft.} = 168\text{ ft.}$
9. AIM 7–2–3 Table: 168 ft. at -5C is 20 ft. Use 20 ft. for correction or round up to 100 ft.
10. Add correction to DA: $1503\text{ ft.} + 20\text{ ft.} = 1523\text{ ft.}$
11. Correction at final holding altitude (OED VORTAC): Take final holding altitude and subtract field elevation: $6400\text{ ft.} - 1335\text{ ft.} = 5065\text{ ft.}$ Using table, correction is approximately 400 ft.
 - Missed Approach final holding altitude (OED VORTAC): $6400 + 400 = 6800\text{ ft.}$

Compensated Baro–VNAV System:

Operators using a temperature compensating RNAV system to make altitude corrections will be set to the current airport temperature (-5°C) and activated prior to the passing the IAF. A manual calculation of the cold temperature altitude correction is required for the MDA/DA.

Individual Segment(s) method: Intermediate segment required

(KMFR) Rogue Valley Intl–Medford, Oregon. Reported Temperature -5°C ILS or LOC/DME RWY 14.

Uncompensated Baro–VNAV System or Manual Method:

1. Cold Temperature Restricted Airport Temperature Limit: -5°C
2. Altitude at the FAF (OSSAJ) = 3800 ft.
3. Airport elevation = 1335 ft.
4. Difference: $3800\text{ ft.} - 1335\text{ ft.} = 2465\text{ ft.}$
5. Use the AIM 7–2–3 ICAO Cold Temperature Error Table for a height above airport of 2465 ft. and -5°C . The approximate calculation is 200 ft. Add the correction to the FAF and all procedure altitudes outside of the FAF up to but not including IF:
 - AMASE (stepdown fix): $4700 + 200 = 4900\text{ ft.}$
 - OSSAJ (FAF): $3800 + 200 = 4000\text{ ft.}$

Compensated Baro–VNAV System:

Operators using a temperature compensating RNAV system to make altitude corrections will set the current airport temperature (-5°C) and activate the system for the intermediate segment.

MEDFORD, OREGON

AI-251 (FAA)

18060

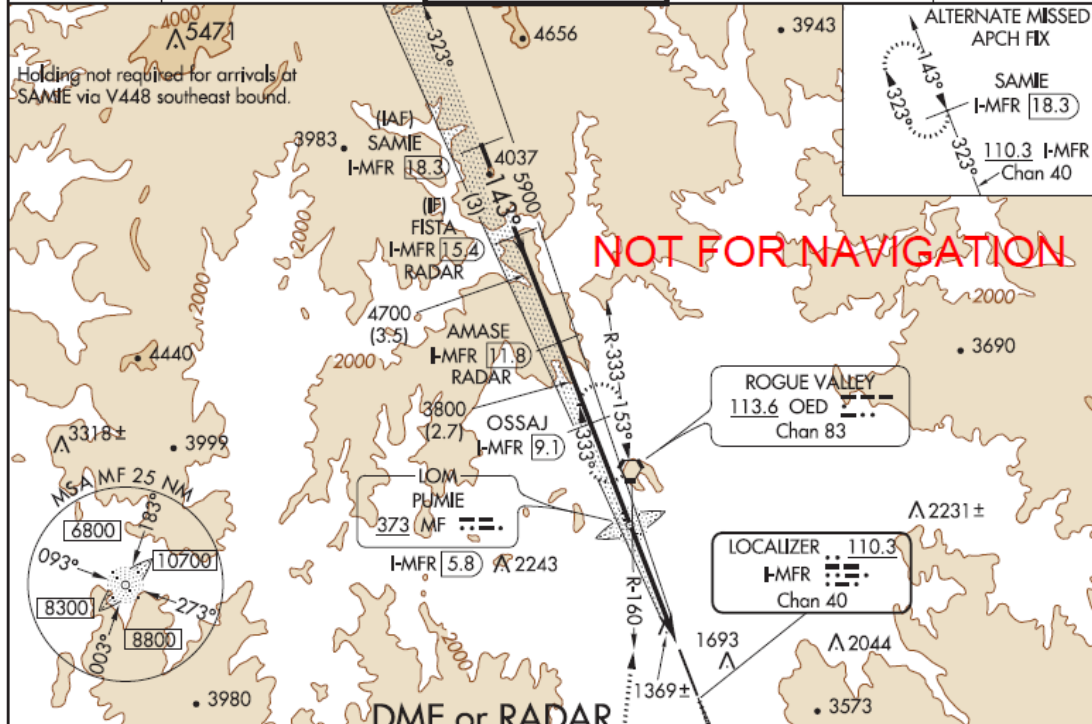
LOC/DME I-MFR 110.3 Chan 40	APP CRS 143°	Rwy Idg 8800	TDZE 1303
		Apt Elev 1335	

ILS or LOC/DME RWY 14
ROGUE VALLEY INTL-MEDFORD (MFR)

When Medford altimeter setting not received, procedure NA. For inoperative MALSR, increase S-ILS 14 all Cats visibility to 2 $\frac{1}{4}$. DME required. Circling NA at night to Rwy 10. #Missed approach requires minimum climb of 319 feet per NM to 4100.

MALSR
MISSED APPROACH: Climb to 6400 via I-MFR SE course to JILOK/I-MFR 1.6 DME and climbing right turn on heading 350 and OED VORTAC R-160 to OED VORTAC and hold, continue climb-in-hold to 6400.

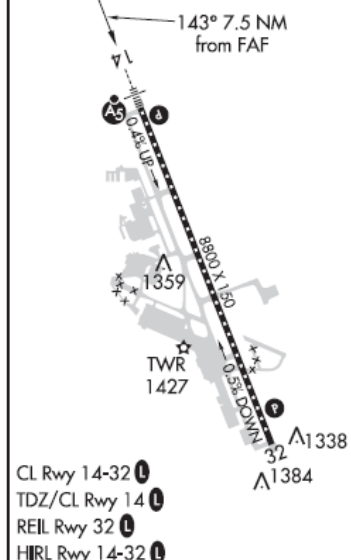
ATIS 127.25	CASCADE APP CON* 124.3 379.9	MEDFORD TOWER* 119.4(CTAF) 257.8	GND CON 121.8	UNICOM 122.95
-----------------------	--	--	-------------------------	-------------------------



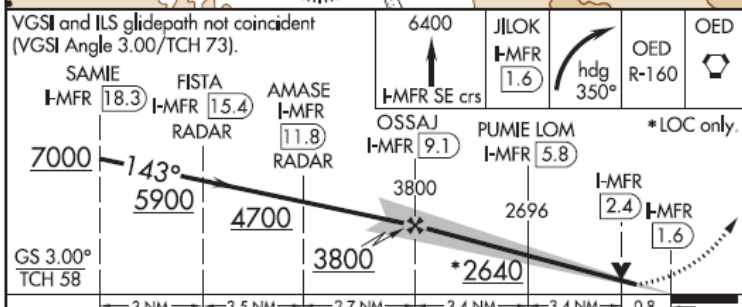
NW-1, 24 MAY 2018 to 21 JUN 2018

NW-1, 24 MAY 2018 to 21 JUN 2018

ELEV 1335 TDZE 1303



DME or RADAR REQUIRED



CATEGORY	A	B	C	D
S-ILS 14#		1503/18	200 (200- $\frac{1}{2}$)	
S-ILS 14		1936-1 $\frac{3}{4}$	633 (700-1 $\frac{3}{4}$)	
S-LOC 14#		1620/24	317 (300- $\frac{1}{2}$)	
S-LOC 14	2080/24 777 (800- $\frac{1}{2}$)	2080/40 777 (800- $\frac{3}{4}$)	2080-1 $\frac{3}{4}$ 777 (800-1 $\frac{3}{4}$)	2080-2 777 (800-2)
CIRCLING	2080-1 745 (800-1)	2080-1 $\frac{1}{4}$ 745 (800-1 $\frac{1}{4}$)	2080-2 $\frac{1}{4}$ 745 (800-2 $\frac{1}{4}$)	2260-3 925 (1000-3)

MEDFORD, OREGON
Amdt 2A 10MAR11

ROGUE VALLEY INTL-MEDFORD (MFR)
42°22'N-122°52'W
ILS or LOC/DME RWY 14

All Segments Method: All segments corrected from IAF through MA holding altitude.

(KAMW) Ames Muni. Reported Temperature -27°C : RNAV (GPS) RWY 1.

Uncompensated Baro-VNAV System or Manual Method:

1. Cold Temperature Restricted Airport Temperature Limit: -27°C
2. Altitude at the Final Approach Fix (FAF) (NIYKU) = 3400 ft.
3. Airport elevation = 956 ft.
4. Difference: $3400\text{ ft.} - 956\text{ ft.} = 2444\text{ ft.}$
5. Use the AIM 7-2-3 ICAO Cold Temperature Error Table for a height above airport of 2444 ft. and -27°C . The approximate calculation is 400 ft. Add the correction to the FAF and all procedure altitudes outside of the FAF up to and including IAF altitude:
 - WOWLU (IAF): $4000 + 400 = 4400$, SIFAY (IAF): $4000 + 400 = 4400$, OHFAH (IAF): $4000 + 400 = 4400$
 - OHFAH (IF): $4000 + 400 = 4400$
 - NIYKU (PFAF): $3400 + 400 = 3800\text{ ft.}$
6. Correct altitudes within the final segment altitude based on the minima used. LNAV/VNAV DA = 1364 ft.
7. Difference: $1364\text{ ft.} - 956\text{ ft.} = 408\text{ ft.}$
8. AIM 7-2-3 Table: 408 ft. at -27°C is approximately 70 ft. Use 70 ft. or round up to 100 ft. for correction.
 - Add correction to LNAV/VNAV DA: $1364\text{ ft.} + 70\text{ ft.} = 1434\text{ ft.}$ No correction at CEXOG required, only required if using LNAV minima.
9. Correction at FULLE: Take final holding altitude and subtract field elevation: $3000\text{ ft.} - 956\text{ ft.} = 2044\text{ ft.}$ Using table, 2044 ft height above airport and -27°C correction is approximately 330 ft. Round down to 300 ft. or up to 400 ft.
 - Missed Approach Holding Altitude/FULLE: $3000 + 300 = 3300\text{ ft.}$

If the airport temperature decreases below -16°C , an uncompensated baro-VNAV system may not be used to fly to the RNAV (GPS) LNAV/VNAV approach minima.

Compensated Baro-VNAV System:

Operators using a temperature compensating RNAV system to make altitude corrections will be set to the current airport temperature of -27°C and activated prior to the passing the IAF. A manual calculation of the cold temperature altitude correction is required for the MDA/DA. At temperatures below -16°C , a compensating baro-VNAV system must be on and active to fly to the LNAV/VNAV line of minima on this approach. Manual calculation of a cold temperature compensated MDA or DA is still required.

Individual Segment(s) method: Intermediate segment required

(KAMW) Ames Muni. Reported Temperature -27°C : RNAV (GPS) RWY 1.

Uncompensated Baro-VNAV System or Manual Method:

1. Cold Temperature Restricted Airport Temperature Limit: -27°C
2. Altitude at the PFAF (NIYKU) = 3400 ft.
3. Airport elevation = 956 ft.
4. Difference: $3400\text{ ft.} - 956\text{ ft.} = 2444\text{ ft.}$
5. Use the AIM 7-2-3 ICAO Cold Temperature Error Table for a height above airport of 2444 ft. and -27°C . The approximate calculation is 400 ft. Add the correction to the FAF and all procedure altitudes outside of the FAF up to but not including IF:

- NIYKU (PFAF): $3400 + 400 = 3800$ ft.

Compensated Baro-VNAV System:

Operators using a temperature compensating RNAV system to make altitude corrections will be set to the current airport temperature of -27°C and activated prior to the intermediate segment. At temperatures below -16°C , a compensating baro-VNAV system must be on and active to fly to the LNAV/VNAV line of minima on this approach. Manual calculation of a cold temperature compensated MDA or DA is still required.

(Flight Operations Branch, Flight Technologies and Procedures Division, AFS-410, 8/15/19)

AMES, IOWA

AL-5307 (FAA)

17229

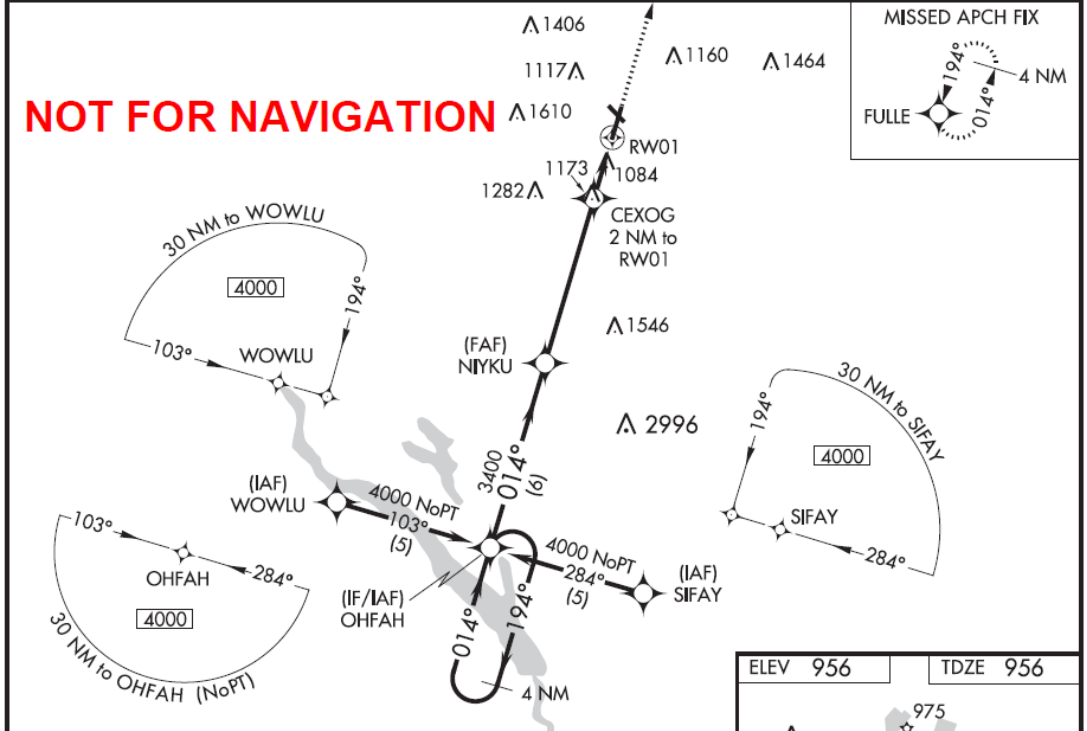
WAAS CH 72717 W01A	APP CRS 014°	Rwy Idg TDZE Apt Elev	5701 956 956
--	------------------------	-----------------------------	---

RNAV (GPS) RWY 1
AMES MUNI (AMW)

⚠ For uncompensated Baro-VNAV systems, LNAV/VNAV NA below -16°C (4°F) or above 54°C (130°F). DME/DME RNP-0.3 NA. Visibility reduction by helicopters NA. Baro-VNAV and VDP NA when using Ankeny altimeter setting. When local altimeter setting not received, use Ankeny altimeter setting and increase all DA 49 feet, increase all MDA 60 feet and LNAV Cat C visibility ½ mile. For inop MALSRL, increase LNAV Cats A, B visibility to 1 mile. For inop MALSRL, when using Ankeny altimeter setting increase LPV all Cats visibility to 1¼ mile and LNAV Cats A, B visibility to 1 mile.

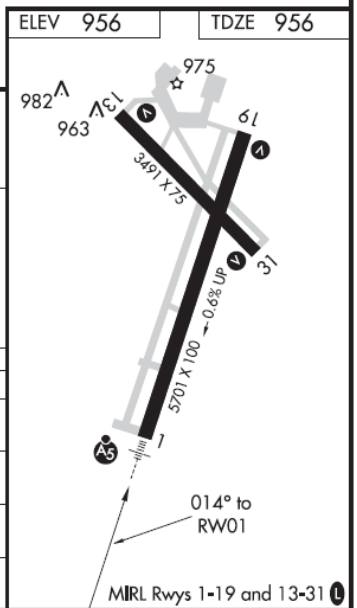
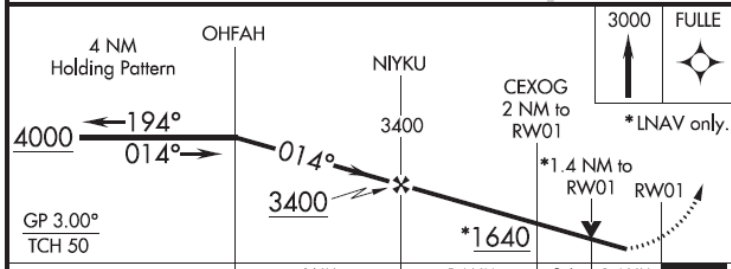
MALSRL
MISSED APPROACH:
Climb to 3000 direct FULLE and hold.

ASOS 132.025	DES MOINES APP CON 123.9 307.15	CLNC DEL 126.0	UNICOM 122.7 (CTAF)
------------------------	---	--------------------------	-------------------------------



NC-3, 24 MAY 2018 to 21 JUN 2018

NC-3, 24 MAY 2018 to 21 JUN 2018



CATEGORY	A	B	C	D
LPV DA	1261-¾	305 (400-¾)		NA
LNAV/VNAV DA	1364-1	408 (500-1)		NA
LNAV MDA	1440-¾	484 (500-¾)		NA
CIRCLING	1440-1	484 (500-1)	1460-1½ 504 (600-1½)	NA

AMES, IOWA
Amdt 2 03JUN10

42°00'N-93°37'W

AMES MUNI (AMW)
RNAV (GPS) RWY 1

OPERATIONS OF AIRCRAFT WITHOUT ADS-B OUT AT CAPACITY-CONSTRAINED U.S. AIRPORTS

Purpose: To describe FAA Air Traffic policy for aircraft operations without Automatic Dependent Surveillance-Broadcast Out (ADS-B Out) at capacity-constrained U.S. airports.

Background: Pursuant to 14 CFR § 91.225 and § 91.227, when operating in the airspace defined in § 91.225, an aircraft must:

(1) Meet the performance requirements in TSO-C166b, Extended Squitter Automatic Dependent Surveillance-Broadcast (ADS-B) and Traffic Information Service-Broadcast (TIS-B) Equipment Operating on the Radio Frequency of 1090 Megahertz (MHz); or

(2) Meet the performance requirements in TSO-C154c, Universal Access Transceiver (UAT) Automatic Dependent Surveillance-Broadcast (ADS-B) Equipment Operating on the Frequency of 978 MHz; and,

(3) Meet the requirements of § 91.227.

14 CFR § 91.225 contains a provision by which aircraft operators can request an ATC authorized deviation from those requirements. On April 1, 2019, the FAA published a Federal Register Notice (FRN), *Statement of Policy for Authorizations to Operators of Aircraft That are Not Equipped With Automatic Dependent Surveillance-Broadcast (ADS-B) Out Equipment*.

(<https://www.regulations.gov/document?D=FAA-2019-0239-0001>). In that FRN, the FAA noted, in part:

“The ADS-B Out final rule contemplated that those operators with a need to operate regularly in airspace where ADS-B Out is required would equip, and that an exception for per-operation authorizations was designed to accommodate unforeseen or rare circumstances.”

“The preamble to the final rule made it apparent that no operator is guaranteed an ATC authorization to deviate from ADS-B Out equipage requirements. Because ATC may not be able to grant every authorization request, it would be detrimental for an operator to make its scheduled operations into ADS-B Out airspace dependent solely on obtaining an ATC authorization to deviate from the equipage requirements of § 91.225. Relying solely on an ATC authorization—which may not be granted—to operate a non-equipped aircraft in ADS-B Out airspace would put the operator’s scheduled operations in jeopardy.”

“(W)hile a scheduled operator may request a deviation from the ADS-B Out equipage requirements on a per-operation basis in accordance with § 91.225(g), it is unlikely that the FAA will issue repeated authorizations to deviate from ADS-B Out equipage requirements. Accordingly, operators who conduct routine and regular operations into ADS-B Out airspace should be taking the necessary steps to equip their aircraft with ADS-B Out equipment to ensure their scheduled operations are not disrupted.”

“Under the rule, the FAA determined that, to the maximum extent possible, operators of equipped aircraft should not be penalized or have their ATC services affected by operators who choose not to equip their aircraft with ADS-B Out equipment. Therefore, under the policy, ATC will make determinations as necessary to ensure equipped operators are not adversely impacted and that efficiency of operations is maintained.

Consistent with this principle, it will be difficult for unscheduled operators conducting operations at capacity-constrained airports to obtain authorizations.”

“(Capacity-constrained) airports are where demand is consistently at 85% capacity or greater, and operations are often constrained. For that reason, it is far more likely that the FAA will deny rather than issue authorization requests from unscheduled operators to operate nonequipped aircraft at these airports.”

a. Applicability. This Notice applies to civil operators of aircraft not equipped with ADS-B Out in accordance with 14 CFR § 91.225 and who are requesting an ATC authorized deviation from those regulatory requirements to operate into or out of a capacity-constrained airport.

b. Exclusion. This Notice does not apply to U.S. Federal, State and local government aircraft flight operations, inclusive of special flights contracted by U.S. Federal, State or local governments, when the aircraft is performing a sensitive government mission for national defense, homeland security, intelligence or law enforcement purposes. Those aircraft operators must contact their own agency for questions regarding FAA authorized mission accommodations.

c. Capacity-Constrained Airports. Based on FAA’s current analysis, this includes the following airports:

1. Boston Logan International Airport (BOS)
2. Charlotte Douglas International Airport (CLT)
3. Chicago O’Hare International Airport (ORD)
4. Dallas/Fort Worth International Airport (DFW)
5. Hartsfield-Jackson Atlanta International Airport (ATL)
6. John F. Kennedy International Airport (JFK)
7. LaGuardia Airport (LGA)
8. Los Angeles International Airport (LAX)
9. McCarran International Airport (LAS)
10. Philadelphia International Airport (PHL)
11. Ronald Reagan Washington National Airport (DCA)
12. San Diego International Airport (SAN)
13. San Francisco International Airport (SFO)
14. Seattle-Tacoma International Airport (SEA)
15. Newark International Airport (EWR)¹

A Notice to Airman (NOTAM) will be issued at these airports advising that operators should not expect authorizations from ATC per this notice during peak hours, typically 0600–2200 local time. This time-of-day policy applies only to those airports defined as capacity-constrained, as listed above. ATC authorization requests into or out of other airports located in the Class B airspace or Mode C Veil associated with the capacity-constrained airport, or to transit that airspace, will be evaluated individually.

This notice does not negate existing airport Noise Abatement Procedures. Any shifts in traffic must be commensurate with existing noise abatement procedures at these airports.

¹ Note: Newark International Airport (EWR) was inadvertently omitted in the April 1 Federal Register Notice Policy; however, it is a capacity-constrained airport.

Aircraft Operations without ADS-B Out in Delegated Airspace between Canada and the United States

Purpose: To describe FAA Air Traffic policy for aircraft operations without Automatic Dependent Surveillance-Broadcast Out (ADS-B Out) in United States sovereign airspace where air traffic control (ATC) responsibilities have been delegated to Canada.

Policy: Pursuant to a 1963 treaty² between the United States and Canada, the United States has delegated ATC authority over certain segments of United States sovereign airspace within 50 aeronautical miles of the common border between the two countries. The treaty provides that “[t]he air traffic control in such segments shall be in accordance with the air traffic regulations of the country over which the aircraft is operating.” Therefore, aircraft operating within United States airspace whose ATC authority has been delegated to Canada must adhere to FAA aviation regulations, including ADS-B regulations codified in 14 CFR §§ 91.225 and 91.227.

This procedure will assist aircraft in complying with the ADS-B Out requirements in those portions of U.S. airspace for which ATC responsibilities have been delegated to Canada pursuant to the above treaty. Specifically, § 91.225 requires that aircraft be equipped with ADS-B Out equipment that meets certain performance requirements including those in § 91.227, subject to specific and limited exceptions. Section 91.225(g) establishes the process for requesting ATC authorized deviations and requires that operator submit requests to the ATC facility with jurisdiction over the concerned airspace. Anyone seeking the authorization to operate in United States sovereign airspace for which ATC authority has been delegated to Canada would obtain that deviation directly from the appropriate Canadian ATC facility with jurisdiction over the concerned airspace. The ADAPT tool would not be available to request such deviation.

A graphical depiction of these delegated segments can be located on the Equip ADS-B Google Earth Map located on the FAA’s Equip ADS-B website:

<https://www.faa.gov/nextgen/equipadsb/research/airspace/>

² Treaty Series 1963 No. 20, “Aircraft Control Near the Common Boundary”, dated December 27, 1963.

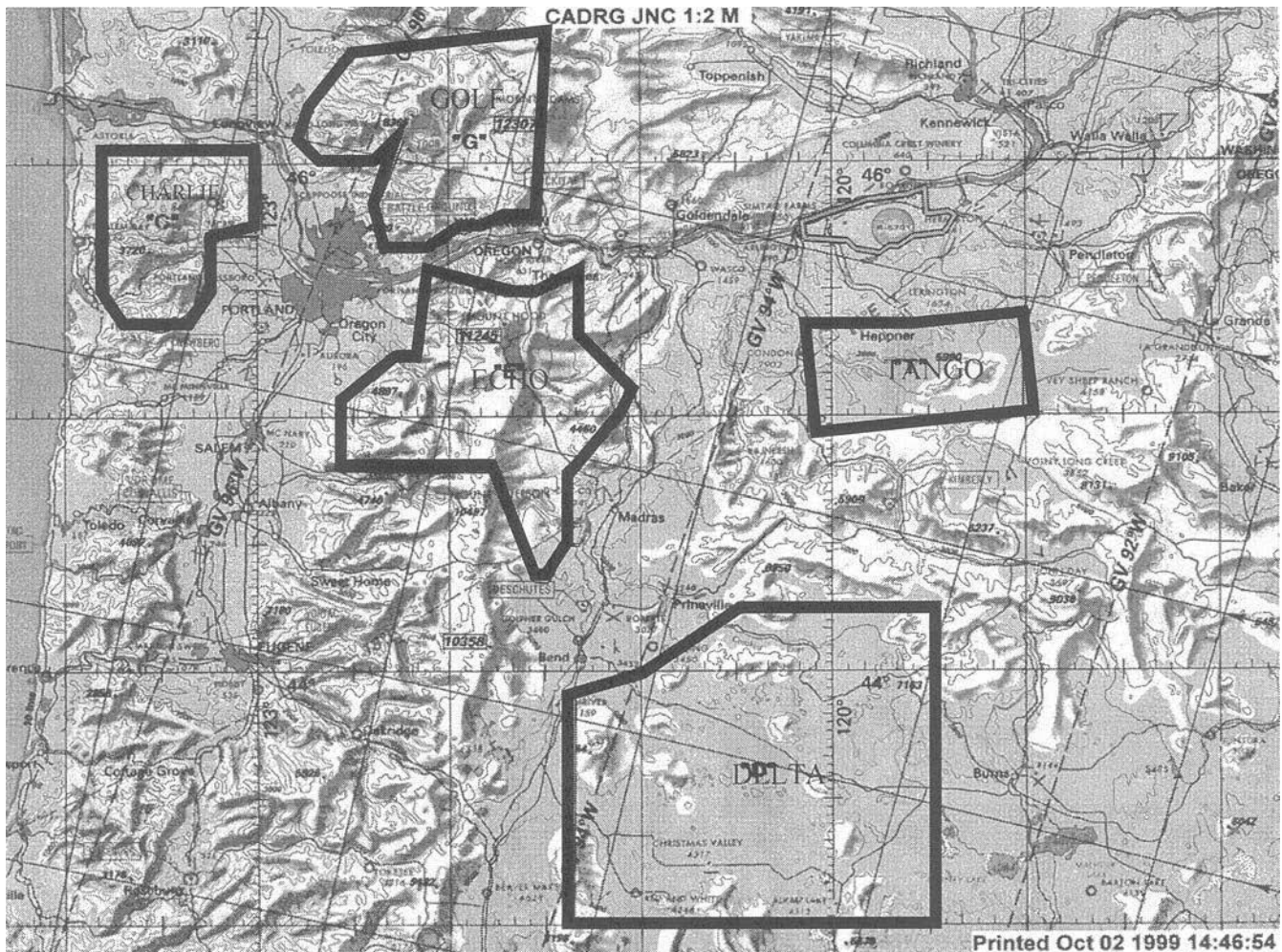
Section 2. Special Military Operations

Notice to Pilots and Interested Personnel in Northern Oregon and Southwest Washington

LIGHTS OUT MILITARY HELICOPTER OPERATIONS

Effective Date: April 30, 2000

The U.S. Air Force 304th Rescue Squadron conducts low altitude flight in five low altitude tactical navigation (LATN) Areas: “Charlie,” “Delta,” “Echo,” “Golf,” and “Tango.” These operations are conducted day and night below 200 feet above ground level (AGL). The night operations are conducted utilizing night vision goggles (NVGs). FAA exemption 5891A authorized NVG training in Air Force helicopters to be conducted without lighted position lights. These operations will ONLY be conducted below 200 feet AGL and outside of five (5) nautical miles from any public use airport, within the five (5) LATN areas.

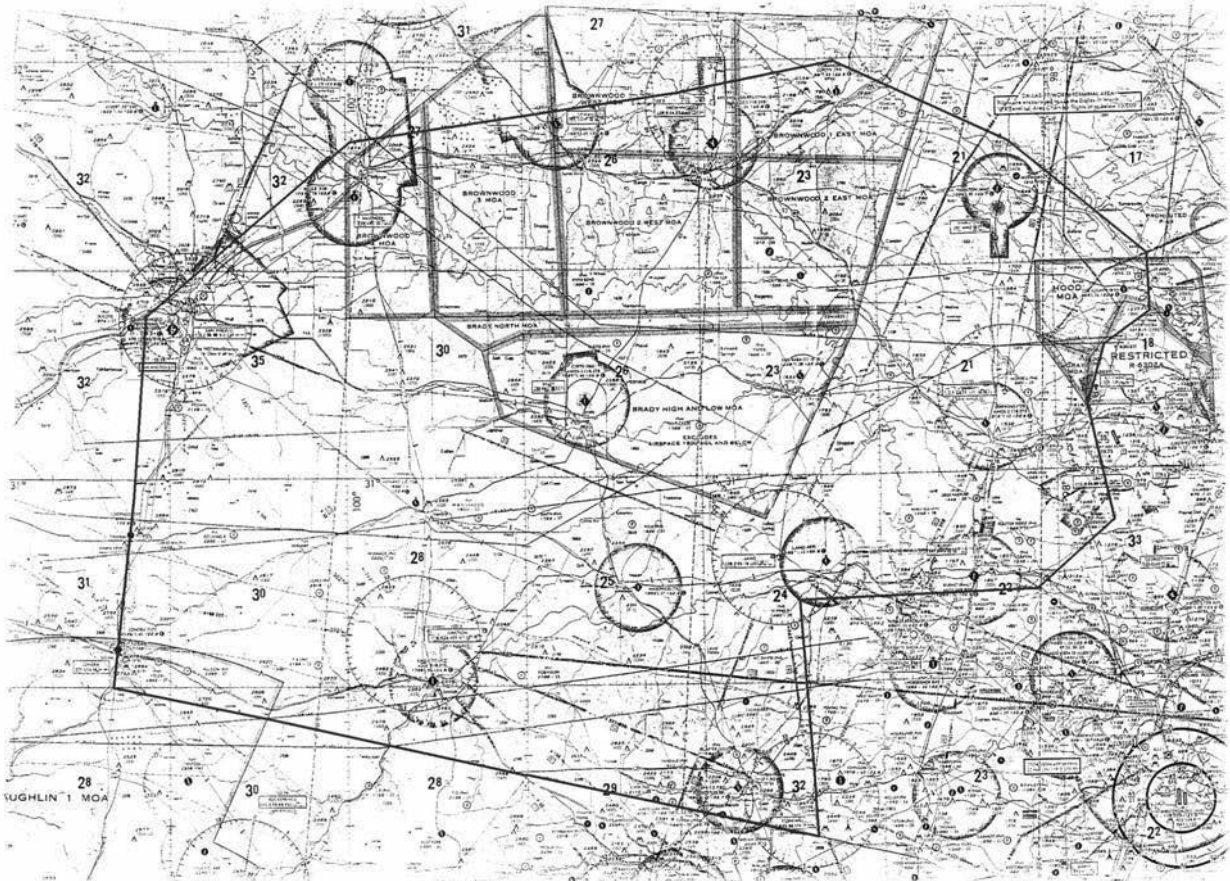


(ANM-520.6 3/2/2000)

Notice to Pilots and Interested Personnel in Central and Southwest Texas

LIGHTS OUT MILITARY HELICOPTER OPERATIONS

The U.S. Army/National Guard is conducting “lights out” tactical helicopter training. These operations are conducted day and night. The night operations are conducted without the use of exterior aircraft lights from the surface up to 200 feet AGL, outside four (4) nautical miles from any public-use airport, and within the boundaries depicted below:



Beginning at lat. 31°24'00" N., long. 097°44'00" W./ North Fort Hood;
 to lat. 31°30'00" N., long. 097°44'00" W.; to lat. 31°48'00" N., long. 098°07'00" W.;
 to lat. 31°57'00" N., long. 098°37'00" W.; to lat. 31°48'00" N., long. 099°59'00" W.;
 to lat. 31°23'00" N., long. 100°35'00" W.; to lat. 30°29'00" N., long. 100°40'00" W.;
 to lat. 30°16'00" N., long. 098°42'00" W.; to lat. 30°43'00" N., long. 098°41'00" W.;
 to lat. 30°45'00" N., long. 098°03'00" W.; to lat. 30°52'00" N., long. 097°52'00" W.;
 to lat. 31°09'00" N., long. 097°55'00" W.; to lat. 31°17'00" N., long. 097°53'00" W.;
 to point of origin.

(SJT 2/21/02)

LIGHTS OUT/LOW LEVEL MILITARY HELICOPTER OPERATIONS IN SOUTHWEST WISCONSIN

The Army National Guard is conducting “Lights Out” tactical operation training IAW FAA Exemption 3946J. These operations are conducted between official sunset and official sunrise at an altitude below 500’ agl. and outside four (4) nautical miles from any public use airport.

The Routes are defined as below:

LONE ROCK (NVG Route #1)

42° 49.70’ N 89° 24.70’ W – SP
42° 45.50’ N 89° 58.00’ W – CP A
42° 46.00’ N 90° 17.50’ W – CP B
43° 03.80’ N 90° 56.40’ W – CP C
43° 17.74’ N 91° 01.13’ W – CP D
43° 43.16’ N 91° 04.76’ W – CP E
43° 53.21’ N 91° 00.64’ W – CP F
44° 08.82’ N 90° 44.30’ W – RP

DELLS (NVG Route #2)

43° 11.00’ N 89° 54.50’ W – SP
43° 26.35’ N 90° 21.24’ W – CP A
43° 41.34’ N 90° 47.89’ W – CP B
43° 43.49’ N 90° 54.37’ W – CP C
43° 50.10’ N 90° 57.31’ W – CP D
43° 51.32’ N 90° 59.43’ W – CP E
43° 53.21’ N 91° 00.64’ W – CP F
44° 08.82’ N 90° 44.30’ W – RP

CW3 TRAVIS E. BOXRUCKER
AASF#2 MADISON, WI
travis.boxrucker@us.army.mil

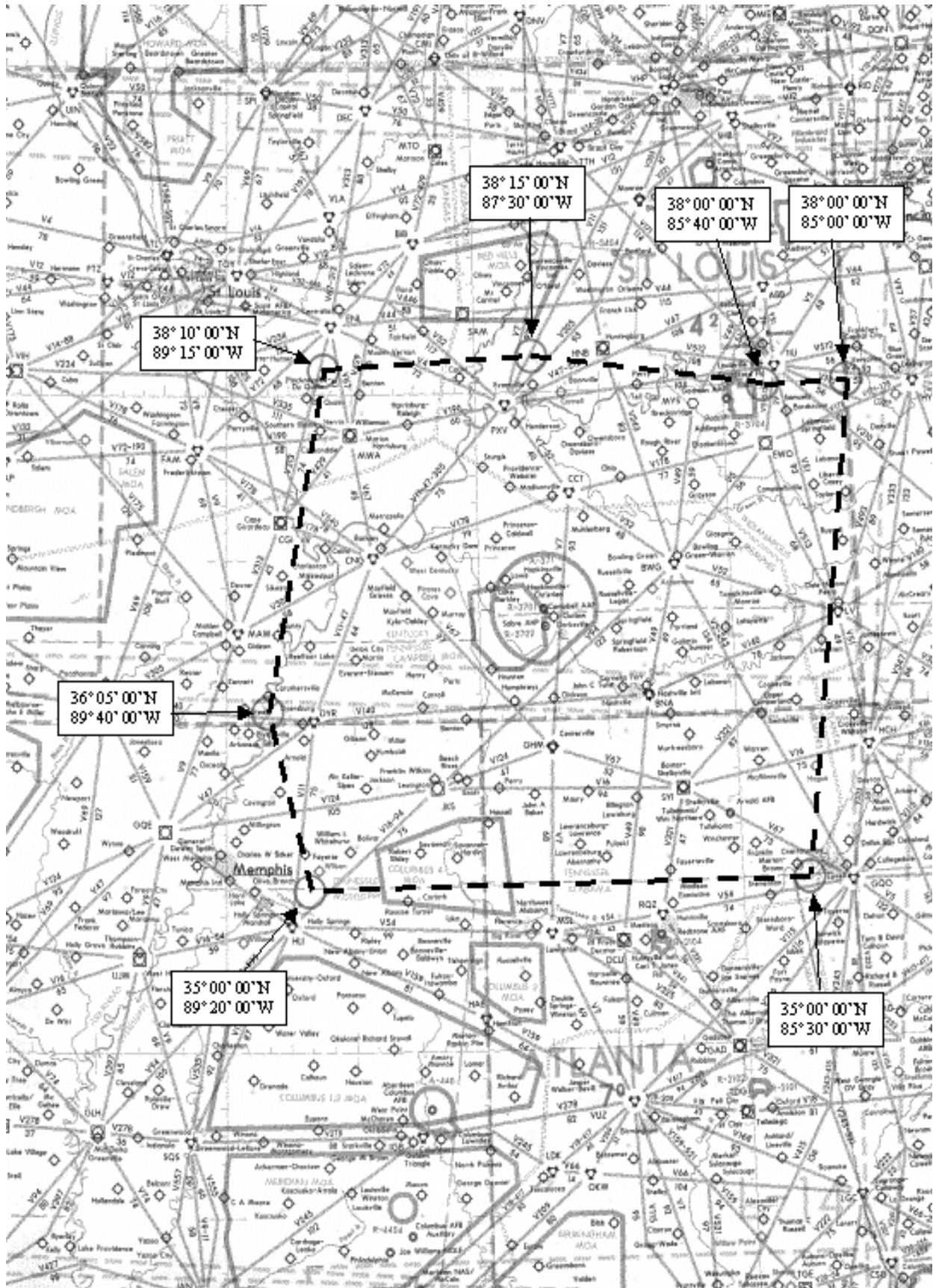
Notice to Pilots and Interested Persons in KY, TN, Southern IL, IN and Northern AL

LIGHTS OUT MILITARY HELICOPTER OPERATIONS

The U.S. Army is conducting “lights out” tactical helicopter training. These operations are conducted without the use of exterior aircraft lights from the surface to 500 feet above ground level, in accordance with FAA Exemption 3946, as amended, during the times of Sunset to Sunrise, and within the boundaries depicted below:

Lat. 38-00-00N, Long. 085-00-00W, to
Lat. 35-00-00N, Long. 085-30-00W, to
Lat. 35-00-00N, Long. 089-20-00W, to
Lat. 36-05-00N, Long. 089-40-00W, to
Lat. 38-10-00N, Long. 089-15-00W, to
Lat. 38-15-00N, Long. 087-30-00W, to
Lat. 38-00-00N, Long. 085-40-00W, to
point of origin. Excluding that airspace
within a 4 nautical mile radius of all public
use airports, and also excluding all class
“B”, “C”, “D” and “E” controlled airspace.

(ASO-530/920 6/8/06)



VARIOUS LOCATIONS

SPECIAL USE AIRSPACE

Playas Temporary Military Operations Area, NM

Effective Dates: May 2–16, 2020.

The USAF will use the airspace for Exercise RED FLAG–RESCUE 20–1 from May 2–16, 2020. The purpose of this exercise is to allow combat air forces the opportunity to practice effective integration with ground forces, which is critical to the success of the real–world Combat Search and Rescue (CSAR) mission. It is designed to provide Personnel Recovery training for both U.S. and allied foreign combat aircrews, para–rescue teams, survival specialists, intelligence personnel, air battle managers, and Joint Personnel Recovery Center personnel.

Aeronautical activities will consist of A–10, AV–8, F–15, F–16, F–18, MQ–9, HH–60G, MH–60S, HC–130J, and EC–130H aircraft conducting high speed combat maneuvering, non–standard formation flights, rescue escort, close air support, free–fall and static line parachute operations, and VFR aerial helicopter refueling missions. There will be no weapons employed, chaff/flares dispensed, or aerial refueling conducted.

PLAYAS Temporary MOA, NM

Boundaries: Beginning at lat. 32°10'43"N., long. 108°42'48"W.;

- to lat. 32°09'20"N., long. 108°19'29"W.;
- to lat. 31°49'31"N., long. 108°21'06"W.;
- to lat. 31°50'49"N., long. 108°44'26"W.;
- to the point of beginning.

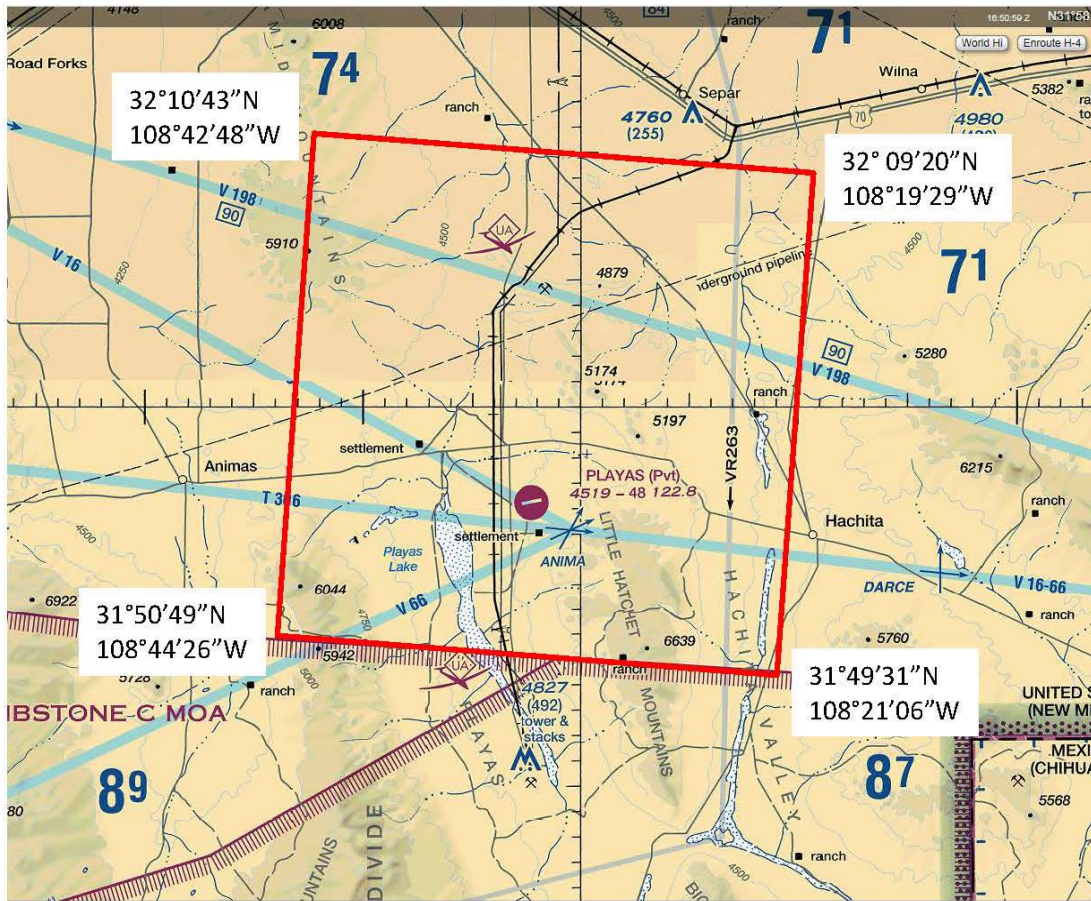
Altitudes: 300 feet AGL to, but not including, FL180.

Times of Use: May 2–16, 2020, by NOTAM.

Controlling Agency: FAA, Albuquerque ARTCC.

Using Agency: U.S. Air Force, Det 1, 414 CTS, Davis–Monthan AFB, AZ.

EL PASO SECTIONAL



PLAYAS Temporary MOA, NM

May 2-16, 2020

Times of Use: May 2-16, 2020, by NOTAM.

Altitudes: 300 feet AGL to, but not including FL180.

NOT FOR NAVIGATION

SPECIAL USE AIRSPACE

Chugs Temporary Military Operations Area (MOA), Windham, VT

Effective: June 1 – 19, 2020

The Chugs Temporary Military Operations Area (TMOA) will be in effect in the vicinity of Windham, Vermont during the period June 1 – 19, 2020. The purpose of the TMOA is to support exercise Eagle Claw 20–01.

The Eagle Claw exercise is designed to provide training in basic fighter maneuvering and air combat maneuvering (air-to-air combat) in a clean jet configuration to comply with the Air National Guard's (ANG) training objectives. Clean configuration is defined as no external fuel tanks or pods attached underneath the wings. With no external fuel tanks, the ability for the fighter aircraft to transit long distances to and from other existing special use airspace is severely limited. Establishing the Chugs TMOA that is geographically closer to Barnes ANGB will enable the 104th Fighter Wing to satisfy Air National Guard training requirements.

Projected typical use of the Chugs TMOA is 12 sorties per day, with expected average sortie duration of less than one hour. Use of the TMOA will be from 0830 to 1730 local time daily. During periods when the TMOA is not needed for training, the airspace will be returned to the FAA controlling agency (Boston Air Route Traffic Control Center).

The following is the description and chart of the Chugs TMOA airspace:

Chugs TMOA, Windham, VT

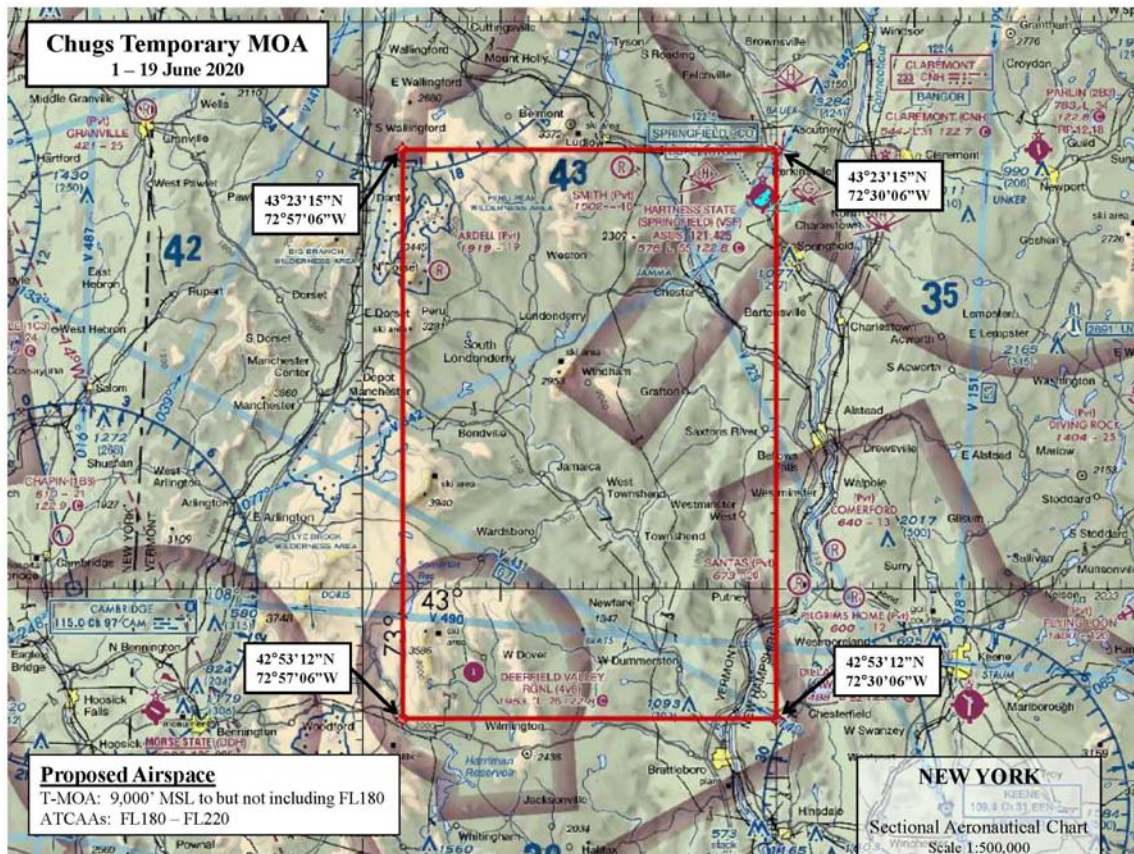
Boundaries. Beginning at lat. 43°23'15"N., long. 72°57'06"W.;
to lat. 43°23'15"N., long. 72°30'06"W.;
to lat. 42°53'12"N., long. 72°30'06"W.;
to lat. 42°53'12"N., long. 72°57'06"W.;
to the point of beginning.

Altitudes. 9,000 feet MSL to but not including FL 180.

Times of use. 0830–1730 local time daily from June 1 – 19, 2020 (estimated 6 hours per day).

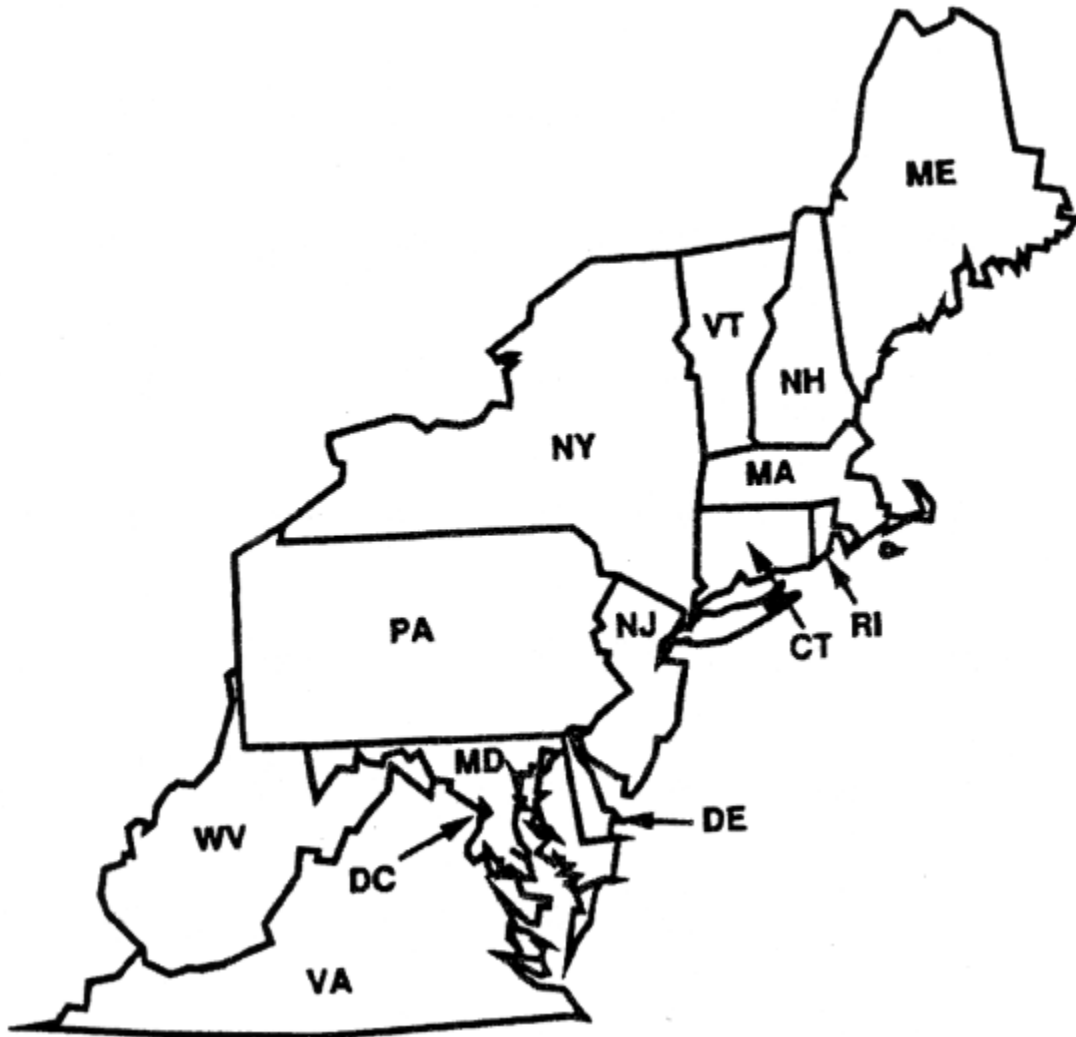
Controlling agency. FAA, Boston ARTCC.

Using agency. Air National Guard, 104th FW, Westfield, MA.



Section 3. Airport and Facility Notices

Northeast United States



**There are no Northeast United States notices for this edition.*

Southeast United States



**There are no Southeast United States notices for this edition.*

East Central United States



CLEVELAND-HOPKINS INTERNATIONAL AIRPORT (CLE) STANDARD (CODED) TAXI ROUTES

Effective: Until Further Notice

The Cleveland–Hopkins International Airport (CLE) has instituted standardized taxi routes to all runways for departure aircraft.

These standardized taxi routes will use color-coded designations for routings to various runways. The color-coded routes may be issued by the CLE ground controller instead of the normal traditional full taxiway routings. The routes and associated codes are published in text form below. Pilots who are unable to comply with standardized routes should advise ground control on initial contact.

READBACK ALL HOLD SHORT INSTRUCTIONS

Runway 6L		
Route ID	Start Point	Routing Via
Violet	All Terminal Parking Areas	Juliet, Kilo, Lima, November HOLD SHORT OF RUNWAY 6R and monitor 120.9, Golf. <i>(Monitor 124.5 when west of Runway 6R)</i>

Runway 6R		
Route ID	Start Point	Routing Via
Emerald	All Terminal Parking Areas	Juliet, Kilo and Lima.

Runway 6R, Intersection Tango		
Route ID	Start Point	Routing Via
Red	All Terminal Parking Areas	Juliet, Kilo, Lima and Tango

Runway 24L		
Route ID	Start Point	Routing Via
Blue	All Terminal Parking Areas	Juliet, Sierra, Lima, Whiskey

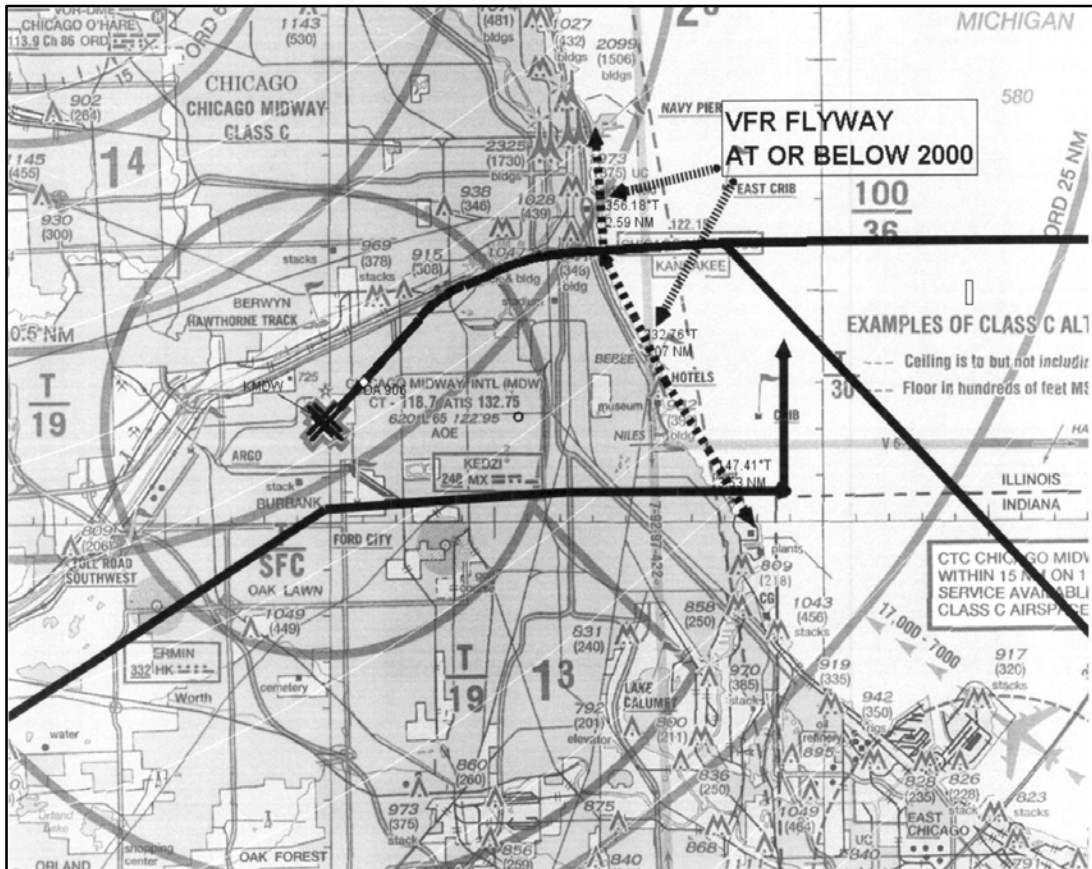
Runway 24R		
Route ID	Start Point	Routing Via
Grey	All Terminal Parking Areas	Juliet, Sierra, HOLD SHORT OF RUNWAY 24L and monitor 120.9, Sierra. <i>(Monitor 124.5 when west of Runway 24L)</i>

Runway 24R		
Route ID	Start Point	Routing Via
Orange	All Terminal Parking Areas	Juliet, Romeo HOLD SHORT OF RUNWAY 24L and monitor 120.9, Bravo, Golf, Sierra. <i>(Monitor 124.5 when west of Runway 24L)</i>

(CLE ATCT 10/23/08)

MIDWAY AIRPORT (MDW) ARRIVALS TO RUNWAY 22L AND VFR AIRCRAFT

During times when MDW arrivals are landing on runway 22L, MDW arrivals will cross the Lake Michigan shoreline (from Navy Pier to Gary/Chicago Int'l airport) between 3,000 feet and 2,400 feet, inbound to runway 22L. When transitioning the Chicago Metropolitan area along the Lake Michigan shoreline, VFR aircraft are advised that lower altitudes are strongly suggested.



*Solid bold tracks indicate the estimated flight paths into Runway 22L

Should you have any questions, please feel free to contact the Chicago TRACON Plans and Procedures office at:

847.608.5548
847.608.5590

(AJV-C21, 2/1/2018)

DETROIT METROPOLITAN WAYNE COUNTY (DTW) STANDARD (CODED) TAXI ROUTES

Runway 22L

Route ID	Starting Point	Routing Via
Green 5	South terminal circles 3N or 4N. CONTACT GROUND ON 121.8	Uniform, Yankee.
Green 6	South terminal circle 2S. CONTACT GROUND ON 119.25	J-8, Tango, Kilo, Yankee. Hold short of Quebec and contact ground on 132.72. Hold short of Uniform and contact ground on 121.8.
Green 7	North terminal circle 1. CONTACT GROUND ON 119.45	Hotel, Bravo, Yankee. Hold short of Kilo and contact ground 121.8.
Green 8	North terminal circle 2N. CONTACT GROUND ON 119.45	Uniform, Foxtrot, Hotel, Bravo, Yankee. Hold short of Kilo and contact ground on 121.8.

Runway 21R

Route ID	Starting Point	Routing Via
Blue 1	South terminal circles 3N or 4N. CONTACT GROUND ON 121.8	TURN RIGHT on Uniform, Golf, RY 9L, Mike, M-6. Hold short of U-8 and contact ground on 119.45.
Blue 2	South terminal circles 3N or 4N. CONTACT GROUND ON 121.8	TURN RIGHT on Uniform, Golf, Victor, Mike, M-6. Hold short of U-8 and contact ground on 119.45.
Blue 3	South terminal circle 2N. CONTACT GROUND ON 119.45	Uniform, Golf, Victor, Mike, M-6.
Blue 4	South terminal circle 2N. CONTACT GROUND ON 119.45	Uniform, Golf, RY 9L, Mike, M-6.
Blue 6	South terminal circles 3N or 4N. CONTACT GROUND ON 121.8	TURN LEFT on Uniform, Kilo, RY 9L, Golf, Victor, Mike, M-6. Hold short of Foxtrot and contact ground on 119.45 joining RY 9L.
Blue 7	South terminal circle 2S. CONTACT GROUND ON 119.25	Juliet, Papa Papa, P-3, Whiskey, Papa.
Blue 11	South terminal circles 3N or 4N CONTACT GROUND ON 121.8	TURN LEFT on Uniform, Kilo, RY 9L, Mike, M-6. Hold short of Foxtrot and contact ground on 119.45 joining RY 9L.
Blue 14	North terminal circle 1 CONTACT GROUND ON 119.45	Foxtrot, Victor, Mike, M-6.

Blue 15	North terminal circles 2 through 6 CONTACT GROUND ON 121.8	Kilo, Victor, Mike, M-6. Hold short of Foxtrot and contact ground on 119.45.
Blue 16	South terminal Taxiway Kilo between Taxiways Romeo and Uniform CONTACT GROUND ON 132.72	Kilo, RY 9L, Mike, M-6. Hold short of Uniform and contact ground 121.8. Hold short of Foxtrot and contact ground on 119.45 joining RY 9L.
Blue 17	South terminal Taxiway Kilo between Taxiways Romeo and Uniform CONTACT GROUND ON 132.72	Kilo, RY 9L, Golf, Victor, Mike and M-6. Hold short of Uniform and contact ground 121.8. Hold short of Foxtrot and contact ground on 119.45 joining RY 9L.

Runway 3L

Route ID	Starting Point	Routing Via
Brown 2	South terminal circle 2S. CONTACT GROUND ON 119.25	Juliet, Papa Papa. Hold short of P-1 and MONITOR tower on 118.4
Brown 4	North terminal circles 2 through 6 CONTACT GROUND ON 121.8	Kilo, Victor, Foxtrot, Mike. Hold short of Foxtrot and contact ground on 119.45.
Brown 6	North terminal circle 1 CONTACT GROUND ON 119.45	Foxtrot, Mike.
Brown 7	South terminal circle 2S. CONTACT GROUND ON 119.25	Juliet, Papa Papa, P-1.
Brown 8	South terminal Taxiway Kilo between Taxiways Romeo and Uniform. CONTACT GROUND ON 132.72	Kilo, RY 9L, Foxtrot, Mike. Hold short of Uniform and contact ground 121.8. Hold short of Foxtrot and contact ground on 119.45 joining RY 9L.

South Central United States



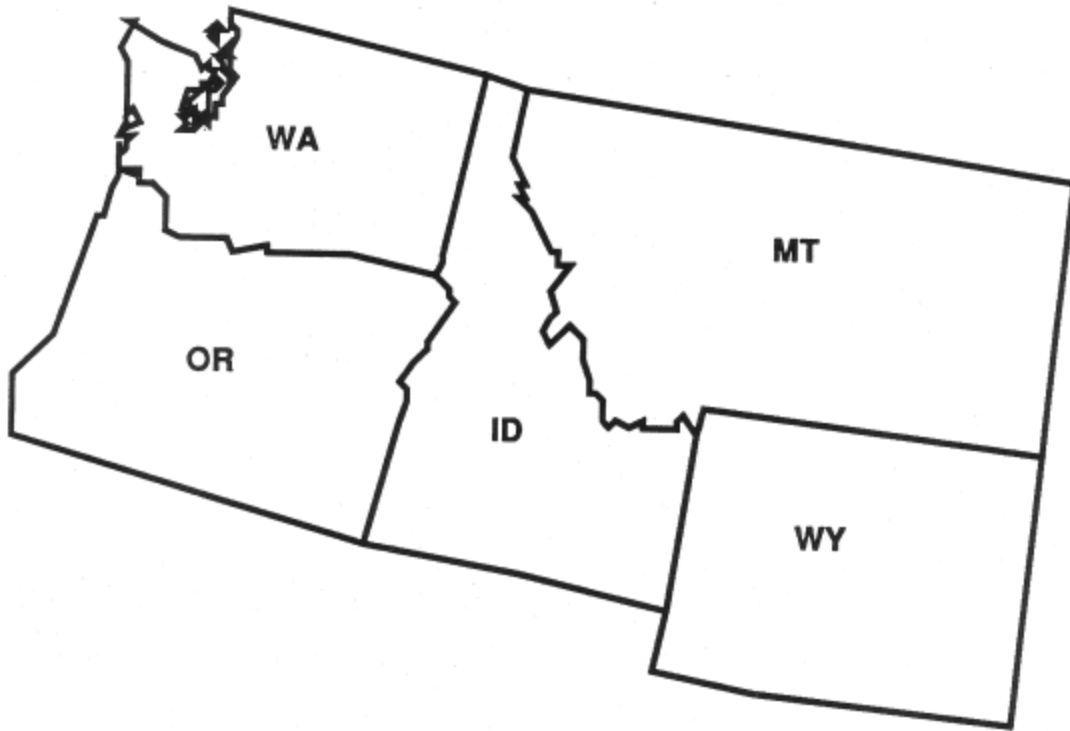
**There are no South Central United States notices for this edition.*

North Central United States



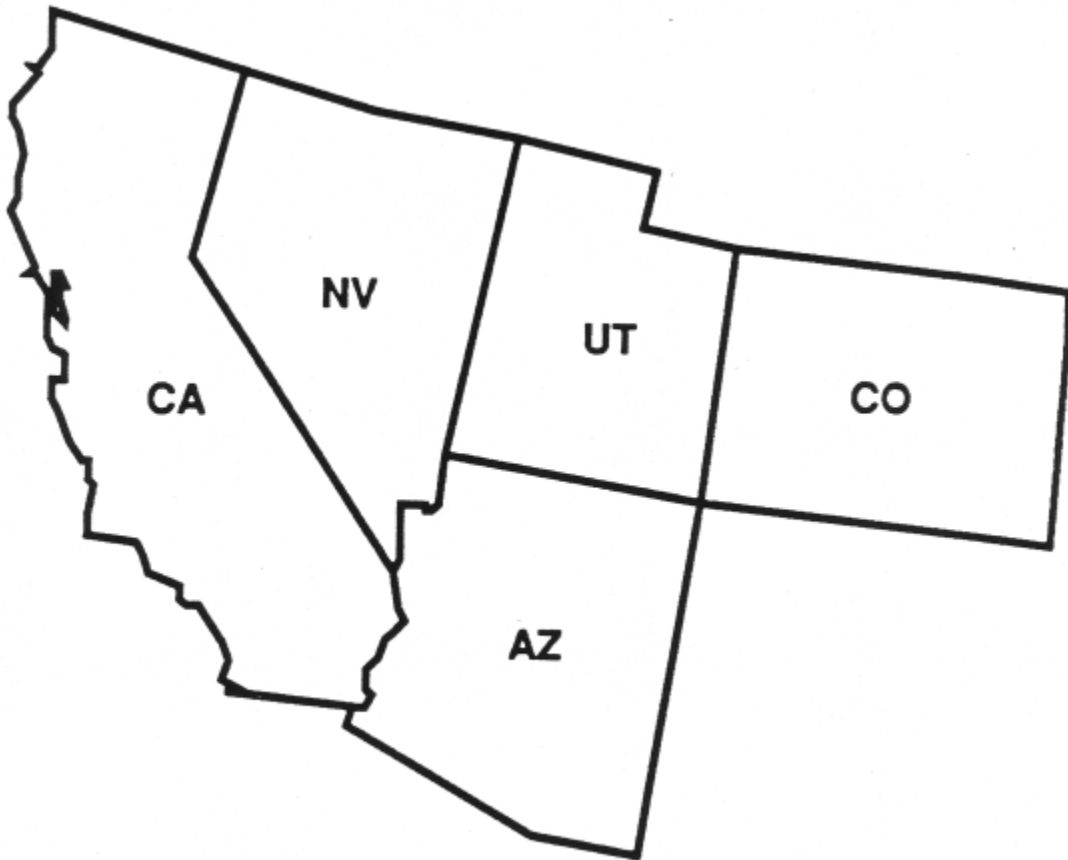
**There are no North Central United States notices for this edition.*

Northwest United States



**There are no Northwest United States notices for this edition.*

Southwest United States



PHOENIX SKY HARBOR INTERNATIONAL AIRPORT (PHX) STANDARDIZED TAXI ROUTES

Effective: Until Further Notice

PHX has instituted standardized taxi routes to/from runways 8/26 and 7L/25R for arriving and departing aircraft.

Standardized taxi routes may be issued by the PHX tower or ground controller instead of a typical full taxiway routing.

The routes will be issued as “Taxi via South Route, Taxi via West Route, etc.”.

The routes are published in text form below.

Route Ident	Start Point	Routing Via	End Point
NORTH ROUTE	Terminal 2, 3, and 4 – South Side	Taxi via Taxiway D to Taxiway T. Continue north on Taxiway T and monitor GC 119.75. If further instructions are not received, hold short of Taxiway C and contact GC for approval to continue. When approved by GC, continue taxi to: a) Runway 8 via Taxiway C. b) Runway 26 via Taxiway B.	Runway 8 or 26
	Terminal 3 and 4 – North Side	Taxi to: a) Runway 8 via Taxiway C. b) Runway 26 via Taxiway B.	Runway 8 or 26
	Landing or crossing runway 7L/25R	Taxi via Taxiway E to Taxiway T. Unless otherwise instructed, monitor GC 132.55 while taxiing on Taxiway E. Continue north on Taxiway T and monitor GC 119.75. If further instructions are not received, hold short of Taxiway C and contact GC 119.75 for approval to continue. When approved by GC, continue taxi to the ramp via Taxiway C.	Terminal 3 or 4 – North Side

Route Ident	Start Point	Routing Via	End Point
SOUTH ROUTE	Terminal 3 and 4 – North Side	Taxi via Taxiway C to Taxiway S. Continue south on Taxiway S and monitor GC 132.55. If further instructions are not received, hold short of Taxiway D and contact GC 132.55 for approval to continue. When approved by GC, continue taxi to: a) Runway 7L via Taxiway D, Taxiway D9, and Taxiway E. b) Runway 25R via Taxiway E.	Runway 7L or 25R
	Landing runway 8	Taxi via Taxiway B to Taxiway S. Unless otherwise instructed, monitor GC 119.75 while on Taxiway B. Continue south on Taxiway S and monitor ground 132.55. If further instructions are not received, hold short of Taxiway D and contact GC 132.55 for approval to continue. When approved by GC, continue taxi to ramp via Taxiway D.	Terminal 3 or 4 – South Side
	Landing runway 26	Cross Taxiway B, taxi via Taxiway C to Taxiway S. Unless otherwise instructed, monitor GC 119.75 while taxiing on Taxiway C. Continue south on Taxiway S and monitor GC 132.55. If further instructions are not received, hold short of Taxiway D and contact GC 132.55 for approval to continue. When approved by GC, continue taxi to the ramp via Taxiway D.	Terminal 3 or 4 – South Side

Route Ident	Start Point	Routing Via	End Point
EAST ROUTE	Terminal 3 and 4 – North Side	Taxi via Taxiway C and Taxiway R. Monitor tower 120.9 on Taxiway R (do not hold short of TWY D unless instructed).	Runway 25R
	Landing or crossing runway 7L/25R	Taxi via Taxiway E to Taxiway R. Unless otherwise instructed, monitor GC 132.55 while taxiing on Taxiway E. Continue north on Taxiway R and monitor GC 119.75 when on Taxiway R. If further instructions are not received, hold short of Taxiway C and contact GC for approval to continue. When approved by GC, continue taxi to the ramp via Taxiway C.	Terminal 3 or 4 – North Side
Route Ident	Start Point	Routing Via	End Point
WEST ROUTE	Terminal 4 – South Side	Taxi via Taxiway D, Taxiway D9, and Taxiway E.	Runway 7L

Alaska



Hawaii



**There are no Alaska and Hawaii notices for this edition.*

Section 4. Major Sporting and Entertainment Events

**ALL-STAR RACE
AND
COCA-COLA 600
MONSTER ENERGY NASCAR CUP SERIES EVENTS
CHARLOTTE MOTOR SPEEDWAY
CHARLOTTE, NC**

May 16-17, 2020

May 22-25, 2020

SPECIAL AIR TRAFFIC PROCEDURES

Special air traffic procedures to manage increased traffic, enhance safety, and minimize delays are in effect during the following periods:

DATE	TIME EDT	TIME UTC
May 16-17	0700-2300	1100-0300
May 22-25	0700-2300	1100-0300

VFR HELICOPTER OPERATIONS

Charlotte International Airport to Speedway- BLUE ROUTE

Contact CLT Tower 118.1 and request “BLUE ROUTE”. After receiving VFR departure instructions, proceed direct Central Piedmont Community College, inside the I-277 loop, then on course Charlotte Motor Speedway. Expect Radar Service termination when leaving CLT CLASS B airspace.

Speedway to Charlotte International Airport- GREY ROUTE

Contact CLT Tower 118.1 on the north side of Highway 49/29 and W. Sugar Creek Road, request “GREY ROUTE”. After receiving Class B clearance, proceed VFR inbound remaining on the North side of Highway 49/29 to I-277 loop, direct Bank of America Stadium, direct CLT Airport.

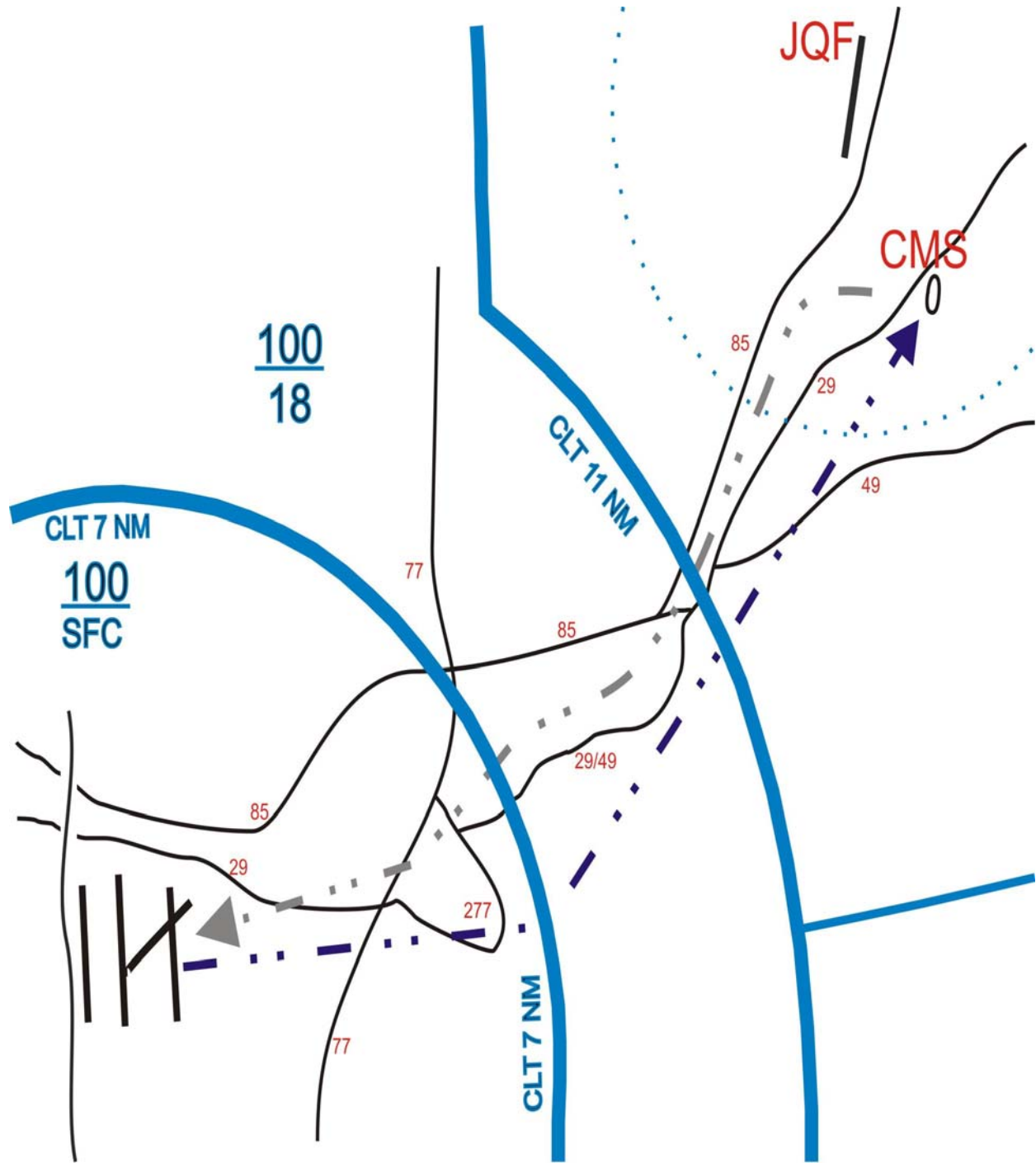
TRAFFIC MANAGEMENT INITIATIVES

IFR and VFR flights operating to/from Concord Regional Airport should anticipate traffic management initiatives including Expect Departure Clearance Times (EDCT), holding, or other potential delay.

Inbound and outbound helicopters squawk assigned beacon codes.

FREQUENCIES

Concord (JQF) Tower	134.65
Charlotte (CLT) Approach	128.32



REMAIN CLEAR OF CHARLOTTE CLASS B AIRSPACE UNLESS AUTHORIZED BY ATC

MICHIGAN INTERNATIONAL SPEEDWAY NASCAR CUP SERIES

FireKeepers Casino 400

Brooklyn, Michigan

June 3–7, 2020

SPECIAL AIR TRAFFIC PROCEDURES

Airport	Identifier
Jackson County	JXN
Adrian–Lenawee County	ADG
Willow Run Airport–Detroit	YIP

<i>ADG– LENAWEЕ COUNTY INFORMATION</i>	
ADG CTAF/UNICOM	122.80
IFR CLEARANCES TOLEDO (419) 865–1495	Call no earlier than 15 min before departure
TOLEDO APPROACH	134.35
ZOB Litchfield Sector	134.650
<i>JXN– JACKSON COUNTY INFORMATION</i>	
Jackson Tower Frequency	128.475
Ground Control Freq Clearance Delivery	121.9
ATIS	125.725
GREAT LAKES Approach	127.3
ZOB Jackson Sector	120.450
JXN CTAF	128.475
JXN UNICOM	122.95

IFR ARRIVAL PROCEDURES

Routes to use from Wednesday June 3rd through Sunday June 7th

DEPARTURE AIRPORT	DESTINATION	ROUTE	ALTITUDE ENTERING ZOB
JQF, CLT, GSP, AVL, TRJ, VJI	JXN, ADG	via FLM..DQN..JXN/ADG	AOB FL230
SVH , RDU, INT, GSO, EXX, MTV, HKY	JXN, ADG	via APE..FBC..JXN/ADG	AOB FL230

JQF, CLT, GSP, AVL, TRJ, VJI	YIP	via TORRR.PETTE2.YIP	AOB FL210
SVH, RDU, INT, GSO, EXX, MTV, HKY	YIP	via BOBCT.FOREY2.YIP	AOB FL300

Due to the complexity and volume associated with this event, users can anticipate dynamic reroutes and altitude assignments.

Expect delays if Severe Weather Avoidance Routes are necessary.

DEPARTURE ROUTING

Be advised that if departing VFR, there will not be any IFR pickups available within 125nm from your departure airport due to traffic volume, complexity and frequency congestion.

ADG Departure Routes

CLT	ROD FLM TAFTT PARQR3 CLT
JQF	ROD FLM GZG MULBE BZM PEGTE JQF
SVH, HKY	ROD DORFF BZM SVH/HKY
EXX, MTV	ROD BLF TRAKS EXX/MTV
GSO, INT	ROD OTONE TRAKS2 GSO/INT
RDU	ROD BKW TIVAE ALDAN3 RDU
TRI, VJI	ROD FLM TRI/VJI
AVL	ROD J43 VXV AVL
GSP	ROD FLM DAJPI RCTOR2

JXN Departure Routes

CLT	LFD ROD FLM TAFTT PARQR3 CLT
JQF	LFD ROD FLM GZG MULBE BZM PEGTE JQF
SVH, HKY	LFD ROD DORFF BZM SVH/HKY
EXX, MTV	LFD ROD BLF TRAKS EXX/MTV
GSO, INT	LFD ROD OTONE TRAKS2 GSO/INT
RDU	LFD ROD BKW TIVAE ALDAN3 RDU
TRI, VJI	LFD ROD FLM TRI/VJI
AVL	LFD ROD J43 VXV AVL
GSP	LFD ROD FLM DAJPI RCTOR2

WILLOW RUN AIRPORT (YIP) DEPARTURE ROUTING

CLT	CLVIN2 STAZE FLM TAFTT PARQR3 CLT
JQF	CLVIN2 STAZE FLM GZG MULBE BZM PEGTE JQF

SVH, HKY	CLVIN2 STAZE DORFF BZM SVH/HKY
EXX, MTV	CLVIN2 STAZE BLF TRAKS EXX/MTV
GSO, INT	CLVIN2 STAZE OTONE TRAKS2 GSO/INT
RDU	LIDDS2 GRIVY BKW TIVAE ALDAN3 KRDU
TRI, VJI	CLVIN2 STAZE TRI/VJI
AVL	CLVIN2 STAZE VXV AVL
GSP	CLVIN2 STAZE DAJPI RCTOR2

FOR SUNDAY DEPARTURES FILE FLIGHT PLANS NO LATER THAN 2000Z.

Section 5. Airshows

2020 U.S. & CANADIAN MILITARY AERIAL AIR-CRAFT/PARACHUTE DEMONSTRATIONS

During CY 2020, the U.S. and Canadian Military Aerial Demonstration Teams (Thunderbirds, Blue Angels, Snowbirds, and Golden Knights) will be performing on the dates and locations listed below.

Pilots should expect Temporary Flight Restrictions (TFR) in accordance with 14 CFR Section 91.145, management of aircraft operations in the vicinity of aerial demonstrations and major sporting events. The dimensions and effective times of the TFRs may vary based upon the specific aerial demonstration event and will be issued via the U.S. NOTAM system. Pilots are strongly encouraged to check FDC NOTAMS to verify they have the most current information regarding these airspace restrictions.

The currently scheduled 2020 aerial demonstration locations, subject to change without notice, are:

2020					
DATE		USAF Thunderbirds	USN Blue Angels	USA Golden Knights	Canadian Snowbirds
April	25-26	Columbus AFB, MS	Vero Beach, FL		
May	2-3	Fort Lauderdale, FL	MCAS Cherry Point, NC		
	9-10	Beale AFB, CA	Dyess AFB, TX		
	13-15			McGuire AFB, NJ	
	16-17	Shaw AFB, SC	McGuire AFB, NJ		
	17			Columbia, SC	
	20		Annapolis, MD		
	20-22			Wantaugh, NY & Miami Beach, FL	
	23-24	Miami Beach, FL	Jones Beach, NY		
	27-29			Myrtle Beach, SC	
	28	Colorado Springs, CO			
June	2-5			Arlington, VA	
	4			Atlanta, GA	
	6-7	Salinas, CA			Selfridge AFB, MI
	8			Washington, DC	
	11-12			Eau Claire, WI	
	13-14	Ocean City, MD	Eau Claire, WI		
	20-21	North Kingstown, RI	Millington, TN	Bowling Green, KY	
	24-26			Hill AFB, UT	
	25-26			Long Pond, PA	
	27-28	Hill AFB, UT	Dayton, OH		

DATE		USAF Thunderbirds	USN Blue Angels	USA Golden Knights	Canadian Snowbirds
June	29-30			St. Louis, MO & Dubuque, IA	
July	1-2			St. Louis, MO & Dubuque, IA	
	4-5	Battle Creek, MI	Traverse City, MI		Pierre, SD
	9			Bronx, NY & Goshen, IN	
	11		Pensacola Beach, FL		
	11-12	JB Elmendorf-Richardson, AK			
	16-17			Duluth, MN	
	18-19	Duluth, MN			
	22	F.E. Warren AFB, WY			
	23-24			Johnson City, NY & Milwaukee, WI	
	23-26				Oshkosh, WI
	25-26	Ellsworth AFB, SD	Milwaukee, WI		
	30-31			Seattle, WA	
August	1-2	Grand Forks AFB, ND	Seattle, WA		
	11			Dyersville, IA	
	13-14			Chicago, IL	
	15-16	Chicago, IL	Brunswick, ME		
	21-22			Avoca, PA	
	22-23	Avoca, PA			
	24			Atlantic City, NJ	
	26	Atlantic City, NJ			
	26-27			Madras, OR	
	27-28			Belleville, MI	
	29-30	New Windsor, NY	Ypsilanti, MI		
September	3-4			Gardner, KS	
	3-5			Cleveland, OH	
	5-6	Gardner, KS			
	5-7		Cleveland, OH		
	10			Mobile, AL	

DATE		USAF Thunderbirds	USN Blue Angels	USA Golden Knights	Canadian Snowbirds
	11			White Sulphur Springs, WV	
	12-13		Baltimore, MD		
	16-18			Huntington Beach, CA	
	17-18			Hammond, LA	
	19-20	Huntington Beach, CA	NAS Oceana, VA		
	21			San Diego, CA	
	24-25			San Diego, CA & Leesburg, VA	
	27-29		MCAS Miramar, CA		
October					
	1			St. Louis, MO	
	1-2			NAS Point Mugu, CA	
	3-4	Minden, NV	NAS Point Mugu, CA		Sacramento, CA
	9			Washington, DC	
	10-11	Edwards AFB, CA	San Francisco, CA		Houston, TX
	15-16			Santa Maria, CA	
	16-17		NAS Pensacola, FL		
	17-18	Fort Worth, TX			
	21-23			Little Rock, AR	
	22-23			Rome, GA	
	24-25	Rome, GA			
	31	Orlando, FL			
November					
	1	Orlando, FL			
	5			Molena, GA & Syracuse, NY	
	7-8	New Orleans, LA			
	12-13			San Antonio, TX	
	14-15	San Antonio, TX			
	18			Plymouth, MA	
	30			Fort Bragg, NC	

Note: Dates and locations are scheduled “show dates” only and do not reflect arrival or practice date TFR periods that may precede the specific aerial demonstration events listed above. Again, pilots are strongly encouraged to check FDC NOTAMs to verify they have the most current information regarding any airspace restrictions.

JANUARY – 2020							FEBRUARY – 2020							MARCH – 2020						
SUN	MON	TUE	WED	THU	FRI	SAT	SUN	MON	TUE	WED	THU	FRI	SAT	SUN	MON	TUE	WED	THU	FRI	SAT
			1	2	3	4						1	1	2	3	4	5	6	7	
5	6	7	8	9	10	11	2	3	4	5	6	7	8	8	9	10	11	12	13	14
12	13	14	15	16	17	18	9	10	11	12	13	14	15	15	16	17	18	19	20	21
19	20	21	22	23	24	25	16	17	18	19	20	21	22	22	23	24	25	26	27	28
26	27	28	29	30	31		23	24	25	26	27	28	29	29	30	31				
APRIL – 2020							MAY – 2020							JUNE – 2020						
SUN	MON	TUE	WED	THU	FRI	SAT	SUN	MON	TUE	WED	THU	FRI	SAT	SUN	MON	TUE	WED	THU	FRI	SAT
			1	2	3	4						1	2		1	2	3	4	5	6
5	6	7	8	9	10	11	3	4	5	6	7	8	9	7	8	9	10	11	12	13
12	13	14	15	16	17	18	10	11	12	13	14	15	16	14	15	16	17	18	19	20
19	20	21	22	23	24	25	17	18	19	20	21	22	23	21	22	23	24	25	26	27
26	27	28	29	30			24	25	26	27	28	29	30	28	29	30				
							31													
JULY – 2020							AUGUST – 2020							SEPTEMBER – 2020						
SUN	MON	TUE	WED	THU	FRI	SAT	SUN	MON	TUE	WED	THU	FRI	SAT	SUN	MON	TUE	WED	THU	FRI	SAT
			1	2	3	4						1			1	2	3	4	5	
5	6	7	8	9	10	11	2	3	4	5	6	7	8	6	7	8	9	10	11	12
12	13	14	15	16	17	18	9	10	11	12	13	14	15	13	14	15	16	17	18	19
19	20	21	22	23	24	25	16	17	18	19	20	21	22	20	21	22	23	24	25	26
26	27	28	29	30	31		23	24	25	26	27	28	29	27	28	29	30			
							30	31												
OCTOBER – 2020							NOVEMBER – 2020							DECEMBER – 2020						
SUN	MON	TUE	WED	THU	FRI	SAT	SUN	MON	TUE	WED	THU	FRI	SAT	SUN	MON	TUE	WED	THU	FRI	SAT
				1	2	3	1	2	3	4	5	6	7			1	2	3	4	5
4	5	6	7	8	9	10	8	9	10	11	12	13	14	6	7	8	9	10	11	12
11	12	13	14	15	16	17	15	16	17	18	19	20	21	13	14	15	16	17	18	19
18	19	20	21	22	23	24	22	23	24	25	26	27	28	20	21	22	23	24	25	26
25	26	27	28	29	30	31	29	30						27	28	29	30	31		

||| = Effective dates and cutoff dates for submitting information to the Publications Staff, AJV-8 for next publication. (Twenty-eight (28) days before next effective date.)

**U.S. Department
of Transportation
Federal Aviation
Administration
800 Independence Ave., S.W.
Washington, DC 20591**

**Critical to
Flying
Safety**

**Flight Information Publication
*Notices to Airmen***