



2018

SUN 'n FUN International Fly-In and Expo

NOTAM

3/1/2018

2018 SUN 'N FUN FLY-IN

Lakeland, Florida

April 09 – April 15, 2018

TABLE OF CONTENTS

• Preflight Planning and Safety Notices	5-AIR-6
• Aircraft Windshield Signs	5-AIR-7
• Lakeland Linder Regional Airport (LAL) Notice	5-AIR-8
• Airport Closures	5-AIR-8
• Airshow Operations / Temporary Flight Restrictions	5-AIR-9
• Balloon Launch Advisory / Skydiving Advisory	5-AIR-9
• Lake Parker and Lake Hancock VFR Holding Procedures	5-AIR-10
• Lake Parker VFR Arrival Procedures	5-AIR-11
• Traffic Pattern	5-AIR-12
• Landing	5-AIR-13
• After Touchdown	5-AIR-13
• International Arrival Procedures	5-AIR-14
• Lakeland VFR Departures	5-AIR-15
• Warbird South Arrival	5-AIR-17
• Choppertown (Certificated Helicopters)	5-AIR-18
• Paradise City (Ultralight/Light Sport Aircraft/Homebuilt Rotorcraft)	5-AIR-19
• IFR Procedures	5-AIR-20
• Traffic Management	5-AIR-20
• IFR Arrivals/Departures	5-AIR-21
• IFR Pick Up/VFR Flight Following	5-AIR-22
• Requests to Deviate from Mode C Transponder Requirements	5-AIR-24
• Flight Service Information	5-AIR-27
• Plant City Municipal Airport (PCM)	5-AIR-28
• Sun 'n Fun Frequencies	5-AIR-29

PREFLIGHT PLANNING & SAFETY INFORMATION

Pilots are expected to adhere to all published LAL arrival and departure procedures and ATC instructions. Failure to do so may jeopardize your safety and the safety of others.

No Radio (NORDO) aircraft must land at an airport within approximately thirty (30) minutes of LAL, call Lakeland Tower at 863-834-3335, and receive ATC approval for arrival. Specific routes and runway assignment will be issued based on traffic and weather conditions.

To ensure clear and concise communications with ATC, pilots are asked to carry a copy of the Sun 'n Fun NOTAM aboard their aircraft.

ALL VFR departures requesting AIRBORNE activation of IFR FLIGHT PLANS or VFR FLIGHT FOLLOWING in the central Florida area should use published procedures. (*See: IFR Pick Up/VFR Flight Following*)

When weather at Lakeland or along your route of flight is MARGINAL VFR, it is STRONGLY suggested that you file IFR from your departure airport and receive your IFR clearance and departure release on the ground. Tampa, Orlando, and Jacksonville Approaches may be unable to issue IFR pick-up clearances due to traffic volume and complexity.

When traffic volume is low, Air Traffic frequencies and positions may be combined. Ground Air Traffic Operational Remote (GATOR) and flagmen positions may not be staffed. Continue to follow ATC instructions.

Pilots should check LOCAL and FDC NOTAMs frequently for current information that may affect your flight.

Pilots must obtain ATC clearance prior to entering Class B airspace around Tampa and Orlando.

Due to the large number of departures after the daily airshow, arrival traffic is normally not accepted until at least one (1) hour after the airshow ends. Check arrival ATIS to determine when the airport is reopened.

Do NOT plan to arrive or depart after the night airshow. The airport is closed.

DO rock your wings with GUSTO for airborne acknowledgements.

DO NOT make unnecessary radio transmissions where procedures clearly state "monitor the frequency only".

AIRCRAFT WINDSHIELD SIGNS

Pilots landing or departing LAL are requested to DISPLAY A SIGN IN THE LEFT SIDE OF THEIR WINDSHIELD to designate their intended parking/camping area or type departure. The sign should have LARGE dark letters that can be read from at least 50 feet. Computer or tablet signs are not acceptable.

ABBREVIATIONS

Abbreviation	Meaning
GAP	General Aviation Parking Area
GAC	General Aviation Camping Area
HB	Homebuilt Parking Area
HBC	Homebuilt Camping Area
HC	Handicapped Parking
SP	Seaplane Parking Area
VAC	Vintage Aircraft Camping/Parking
ONC	One Night Camping (NO FACILITIES)
CBP	U.S. Customs and Border Protection
FBO	Fixed Base Operator
E1	E1 Ramp Tenants
E2	E2 Ramp Tenants
EXHIBIT	Exhibitor
WB	Warbirds
P	Paradise City
VFR	VFR Departure
IFR	IFR Departure

Parking sign example:



LAKELAND LINDER REGIONAL AIRPORT (LAL) NOTICE

The control tower will be open and the Class D services available from 0600– 2200 EDT (1000–0200 UTC).

DO NOT operate in the Class D airspace SOUTH of RWY 09R/27L. This area is reserved for aircraft using other procedures.

DO NOT STOP on the runway after landing. Exit the runway as soon as possible on a hard surface.

DO NOT stand on/near or walk/drive across the runways.

Use caution when operating in non-movement areas. All movement on other than paved runways is at PILOTS OWN RISK.

All aircraft must be TIED DOWN. Tie down equipment may not be available.

Aircraft parking and camping is allowed in designated areas only. CAMPING NORTH OF RWY 09L/27R IS PROHIBITED.

Contact the FBO for hard surface reserved parking and fueling information.

Student training flights and solos are NOT permitted at LAL during this event.

Observe all fire prevention rules. NO campfires or stoves are permitted near aircraft.

RWY 05/23 will be CLOSED from 1400 EDT (1800 UTC) March 31 through 1600 EDT (2000 UTC) April 19.

RWY 08/26 will be CLOSED from 1400 EDT (1800 UTC) March 31 through 1600 EDT (2000 UTC) April 19. There will be a 2205 FT turf strip in this area. (*See: Paradise City*)

Several taxiways will be closed as indicated by orange cones or low profile barricades.

ENGINE OPERATION and TAXI are PROHIBITED SOUTH OF RWY 09R/27L from 1930–0700 EDT (2330–1100 UTC).

AIRPORT CLOSURES

The airport is CLOSED during aerobatic demonstrations and nightly from 1930–0600 EDT (2330–1000 UTC) April 8 through April 16 except for Paradise City.

Paradise City is CLOSED during aerobatic demonstrations and nightly from SUNSET – SUNRISE April 8 through April 16

AIRSHOW OPERATIONS

The Air Show Operations Area is from the surface to 15,000 FT MSL, within a five (5) nautical mile radius of Lakeland Linder Regional Airport.

AIR SHOW SCHEDULE			
DAY	DATE	TIME (EDT)	TIME (UTC)
Tuesday	April 10	1400–1700	1800–2100
Wednesday	April 11	1400–1700	1800–2100
Wednesday Night	April 11	1930–2100	2330–0100
Thursday	April 12	1300–1715	1700–2115
Friday	April 13	1300–1715	1700–2115
Saturday	April 14	1300–1715	1700–2115
Saturday Night	April 14	1930–2130	2330–0130
Sunday	April 15	1300–1715	1700–2115

NOTE–

Air show and flight restriction schedules are subject to change. Pilots should check NOTAMs (both D and FDC) frequently to ensure the most current information.

TEMPORARY FLIGHT RESTRICTIONS

Temporary flight restrictions (TFR) will be in effect during periods of high performance aerial demonstrations. TFR information is disseminated via FDC NOTAM prior to the event. Once published, text and graphic depictions of restrictions may be found at:

www.tfr.faa.gov

BALLOON LAUNCH ADVISORY

Saturday, April 14, 0700–0800 EDT (1100–1200 UTC)

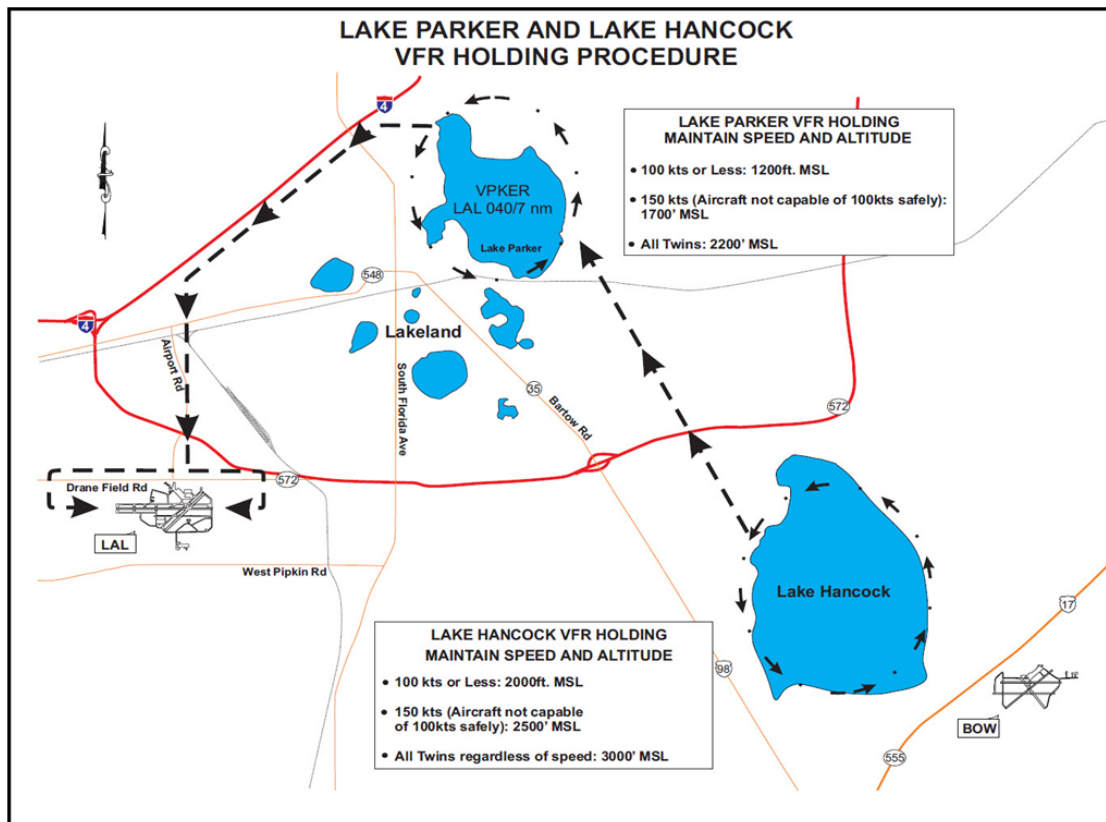
Use caution for balloon activity in the vicinity of LAL. Arriving aircraft may expect delays during this event.

SKYDIVING ACTIVITY ADVISORY

Remain vigilant for skydiving activity in the vicinity of Zephyrhills Airport (ZPH) located 16.4 nm NW of Lakeland on the LAL332 radial. Be alert for skydivers descending from 13,500 feet over ZPH sunrise to sunset.

Remain vigilant for skydiving activity in the vicinity of Blackwater Creek Ultralight Airport (9FD2) located 11.2 nm NW of Lakeland on the LAL326 radial. Be alert for skydivers descending from 17,999 feet over 9FD2 sunrise to sunset.

LAKE PARKER AND LAKE HANCOCK



VFR HOLDING AT LAKE PARKER

If VFR holding is necessary, ATC will instruct a lead aircraft to turn left and proceed southbound over the west shore of Lake Parker.

Hold counter-clockwise around the lakeshore.

All other aircraft will be instructed to follow the leader in single file.

Controllers located on the west side the lake will monitor traffic in the holding pattern.

DO NOT PROCEED past Lake Parker without ATC clearance.

Maintain 1,200 FT MSL/100 knots or less, 1,700 FT MSL/150 knots, or 2,200 FT MSL (twin engine aircraft) regardless of airspeed.

VFR HOLDING AT LAKE HANCOCK

If VFR holding prior to Lake Parker is necessary, ATC will instruct aircraft to proceed to Lake Hancock.

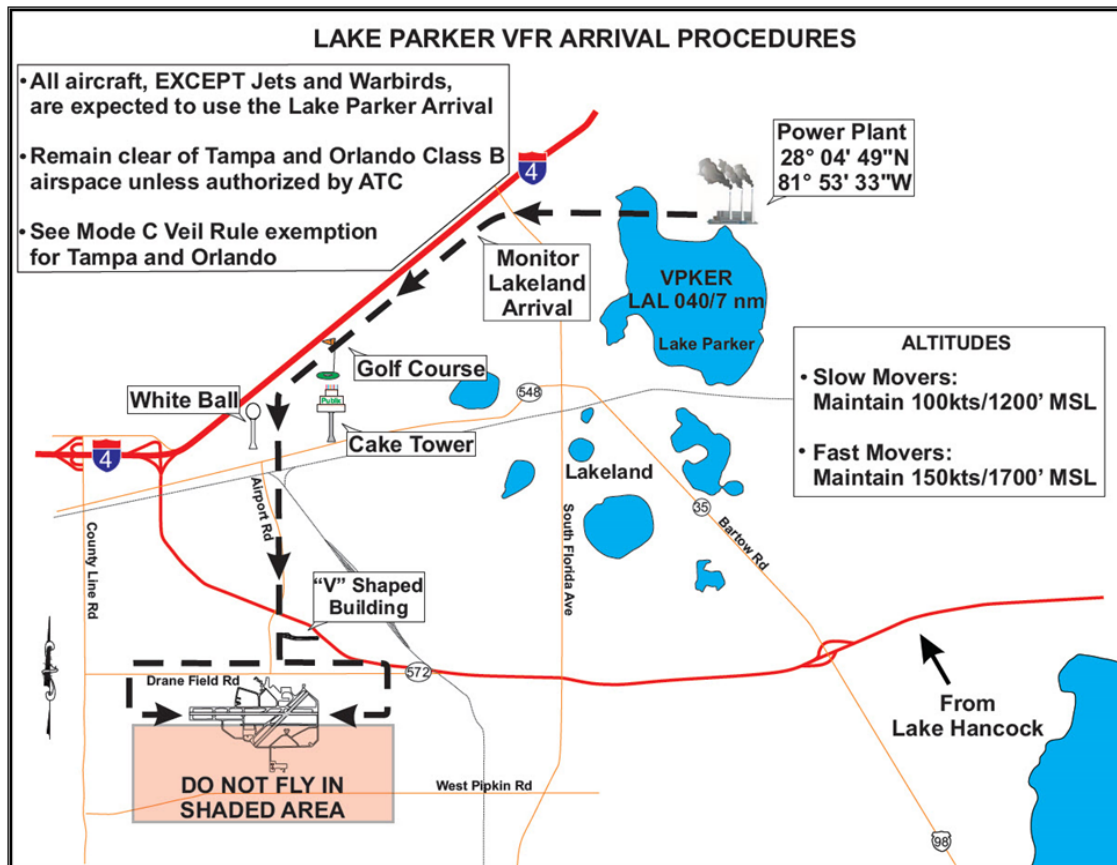
Remain clear of Lake Parker and east of the Lakeland Airport.

Hold counter clockwise around the lakeshore.

Maintain 2000 feet MSL/ 100 knots or less, 2500 feet MSL/150 knots or 3,000 feet MSL (twin-engine aircraft) regardless of speed.

LAKE PARKER VFR ARRIVAL PROCEDURES

All aircraft (except jets/warbirds) are expected to use the Lake Parker arrival procedures.



30 miles out: TURN LANDING LIGHTS ON

Fly toward Lake Parker to approach from the North, Northeast, East or Southeast.

20 miles out: Listen to ARRIVAL ATIS 128.575 for landing and special information.

MONITOR Lake Parker Arrival on 124.5.

TURN ON YOUR LANDING LIGHTS and ENSURE LANDING GEAR IS DOWN.

Fly westbound over the north shore of Lake Parker. The power plant smokestacks with white strobe lights are located at the north side of Lake Parker. Expect heavy air traffic in this area.

All aircraft maintain 100 knots, at 1,200 feet MSL, approaching Lake Parker. Aircraft unable to safely slow to this speed should maintain 150 knots at 1,700 feet. At this point, landing lights should be on and landing gear down.

Controllers located at Lake Parker will contact you in the vicinity of Lake Parker's north shore, using your aircraft "color" and "type" to provide sequencing and other arrival information.

LAKE PARKER VFR ARRIVAL PROCEDURES *(Continued)*

Controllers may ask you to “ROCK YOUR WINGS” as an acknowledgement for instructions.

DO NOT transmit unless requested by ATC or if you have an EMERGENCY.

REMAIN IN TRAIL to the airport. NO side-by-side.

From the north shore depart the power plant flying westbound. You will see baseball fields to your south. Follow the road north of the baseball fields. Continue westbound.

Continue westbound approximately one-half nautical mile toward the intersection of Interstate I-4 and a four lane road.

At the intersection of Interstate I-4 and the four lane road, turn southwest following Interstate I-4 approximately 3 nautical miles.

Turn southbound, keeping the golf course and cake tower to your east and the white water tower to your west. Lakeland Linder Regional Airport is approximately 3.5 nautical miles south of you.

Fly southbound toward the large V-shaped building. The **BLUE-ROOFED** airport terminal building at the Lakeland Linder Regional Airport is directly south of the large V-shaped building.

MONITOR Lakeland frequency 135.225 after making your turn southbound toward the blue roof terminal.

LISTEN for ATC instructions.

Over fly the large V-shaped building. Continue toward the **BLUE-ROOFED** airport terminal building. Plan to turn downwind prior to the airport terminal building in the vicinity of Drane Field Road.

TRAFFIC PATTERN

IMPORTANT – RWY 09L/27R is a narrow strip 75 feet wide (which is usually a taxiway) marked with a green and orange dot.

CAUTION – Be alert for special event and fly-by aircraft using the main runway with opposite-direction base leg entries. Expect numerous aircraft in the fly-by pattern and other operations at/below 2000 FT MSL south of RWY 09R/27L.

Do not deviate south of RWY 09R/27L in the event of a go-around.

Downwind:

Fly directly toward the **BLUE-ROOFED** terminal building. Plan to turn downwind PRIOR to the blue-roofed terminal building in the vicinity of Drane Field Road.

You will fly either left traffic for RWY 09L or right traffic for RWY 27R.

Final: RWY 09L or 09R:

The displaced thresholds are indicated by strobe lights on each side of the runways. If you require the full length (8500 FT), advise the tower.

Short Final:

If landing RWY 09L, you may be instructed by the tower controller to land on either the GREEN or ORANGE dot

LANDING

DO NOT land on the main (wide) RWY 09R/27L unless specifically instructed by the Control Tower.

Roll to the end of the runway or follow air traffic control instructions.

Do NOT stop on the runway.

AFTER TOUCHDOWN

REMAIN ON HARD SURFACE unless directed by parking flagman.

DO NOT STOP ON THE RUNWAY, clear the runway expeditiously.

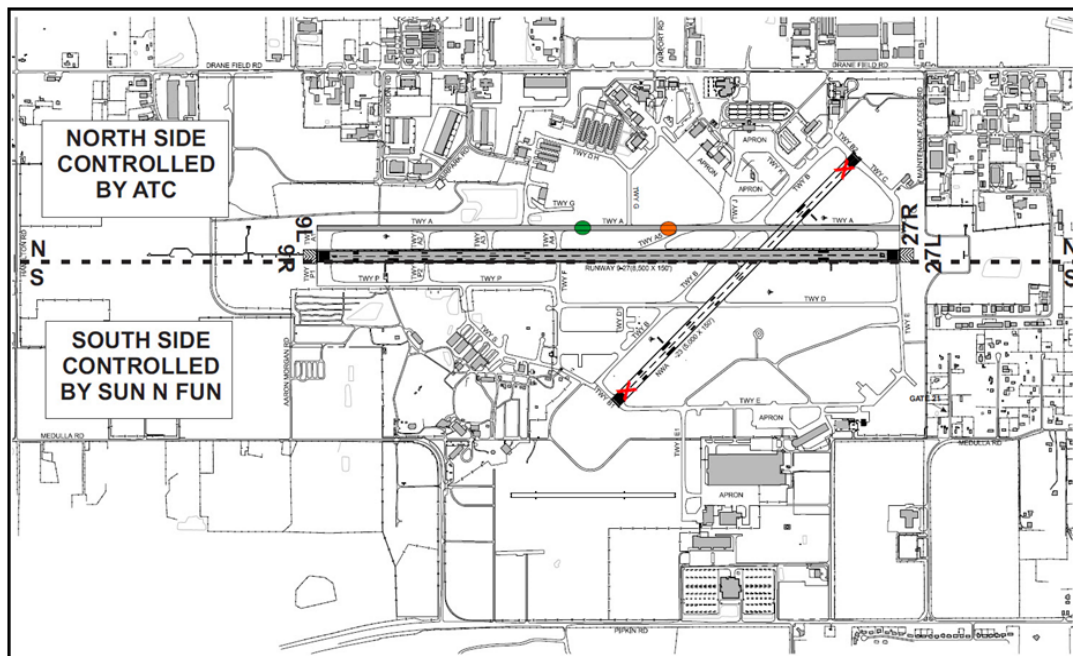
Use caution when taxiing due to the high volume of aircraft, vehicles, and personnel.

When south of RWY 09R/27L, Sun 'n Fun personnel will direct you to the parking area. Monitor Sun 'n Fun Ground Advisory on 126.075.

Park only where directed. Due to congestion, you may be asked to temporarily stop your aircraft.

DO NOT leave your aircraft until you have reached your final parking spot and have tied your aircraft down.

Select 121.5 prior to radio shutdown to detect inadvertent activation of ELT.



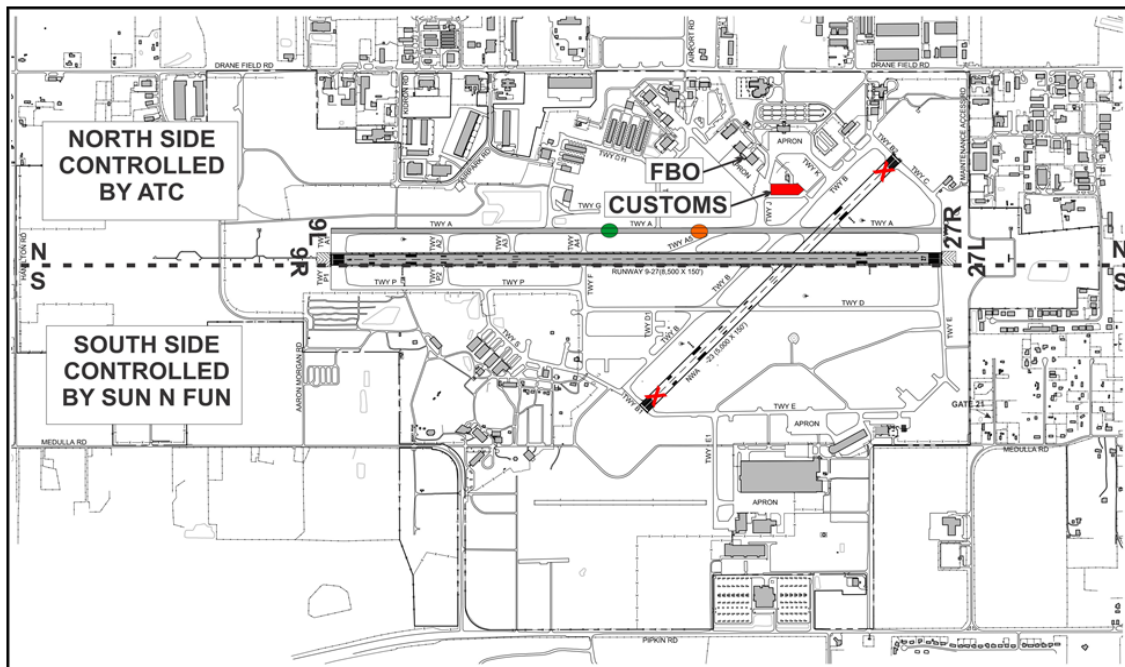
INTERNATIONAL ARRIVALS

LAL is a User Fee Airport. Visit <http://www.lakelandairport.com/us-customs> for more information on overflight exemptions, landing rights, and user fees. NOTE: Overflight exemptions may take up to 30 days to process.

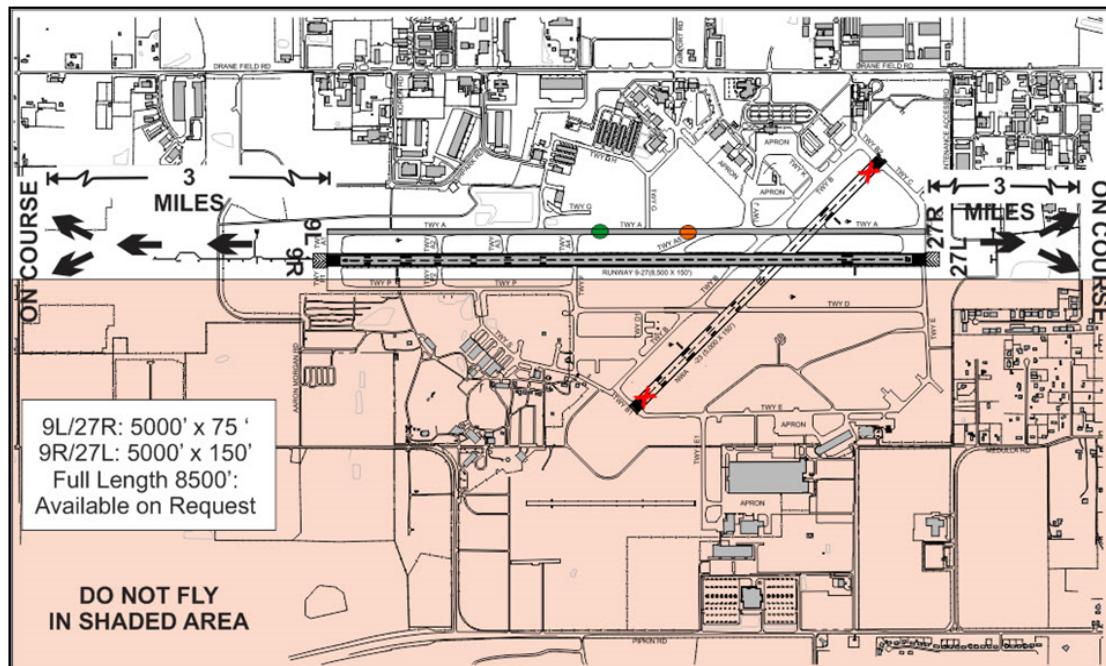
The U.S. Customs and Border Protection General Aviation Facility is located on the north side of the airport, east of the FBO. Upon landing, roll to the end of the runway and follow ATC and/or flagmen instructions.

Pilots and crews should allow for inspection time when planning their arrival. Aircraft arriving at or near the start of the airshow will not be allowed to taxi to the south side of the airport until after the airshow.

U.S. Customs and Border Protection Operating Hours			
DAY	DATE	TIME (EDT)	TIME (UTC)
Tuesday	April 10	Closed	Closed
Wednesday	April 11	Closed	Closed
Thursday	April 12	1130–2000	1530–0000
Friday	April 13	1130–2000	1530–0000
Saturday	April 14	1130–2000	1530–0000
Sunday	April 15	1130–2000	1530–0000



LAKELAND VFR DEPARTURES



If Lakeland Airport is **IFR**, TAXI IS PROHIBITED without an IFR CLEARANCE.

Prior to engine start, place a sign in your windshield with the letters “**VFR**” to indicate to the flagmen you intend to depart VFR.

Before taxiing, monitor Lakeland Departure ATIS on 118.025 for taxi information.

When ready to taxi, **DO NOT CONTACT GROUND CONTROL**. Follow the flagman’s directions and other traffic to the advertised active runway.

Hold short of the runway and monitor the applicable tower frequency.

- Departing RWY 09L/27R monitor 133.125.
- Departing RWY 09R/27L monitor 127.850.

FAA air traffic controllers on elevated platforms “**GATORS**” near runway departure points will clear all aircraft for take off via the applicable departure frequency.

After departure, proceed straight out for three (3) miles before proceeding on course. Avoid Lake Parker and Lake Hancock.

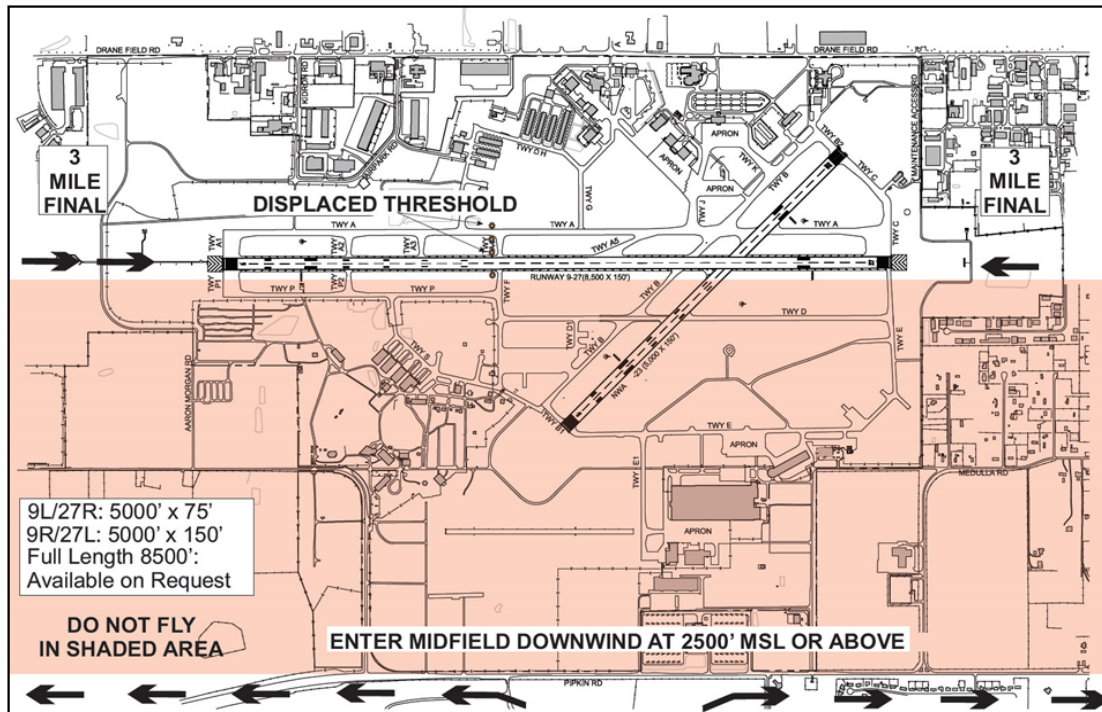
Be alert for numerous aircraft departing, particularly after 1800 EDT, and for arrival traffic from the north. Use caution for special flight activity south of the airport and parachute jumping at the Zephyrhills Airport (ZPH) and Blackwater Creek Ultralight Airport (9FD2).

GATOR

Ground Air Traffic Operational Remote



WARBIRD SOUTH ARRIVALS



CONTACT Lakeland Tower on 118.35 10 NM South of LAL.

Pilot should state: Warbird south arrival, aircraft color and type, position.

Example: "Lakeland Tower, Warbird south arrival, silver mustang, 10 south"

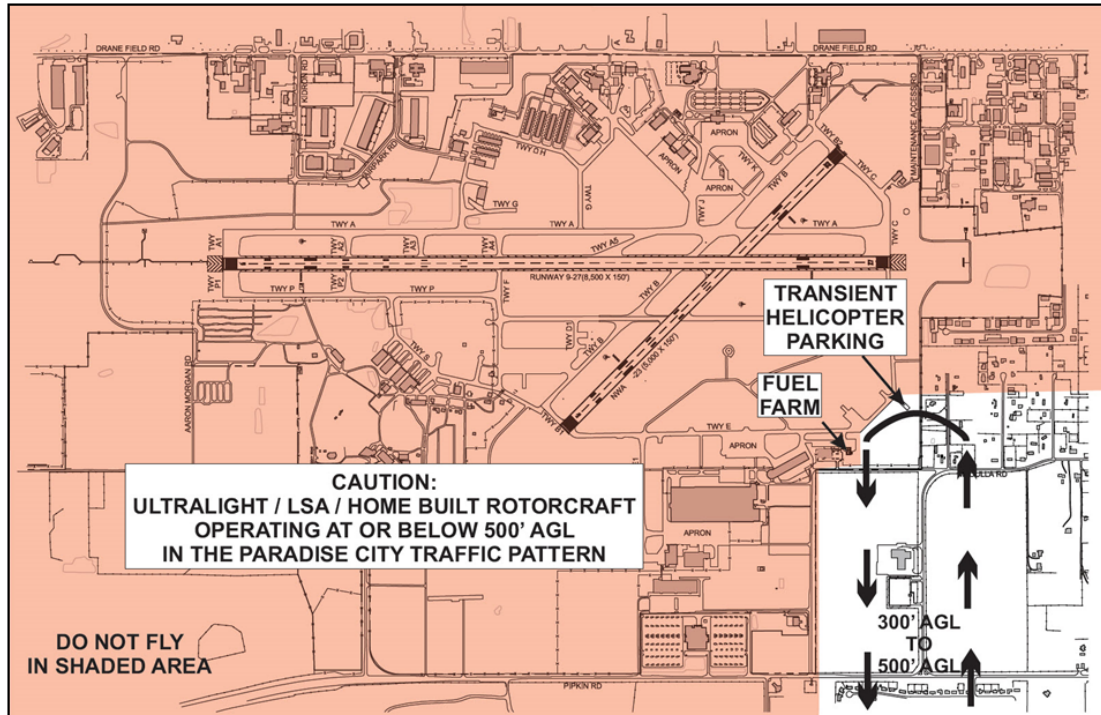
Approach the airport from the south and enter a MID-FIELD DOWNWIND for RWY 09R or 27L, as instructed. Remain AT OR ABOVE 2,500 FT MSL until turning a wide base leg to at least a 3 MILE FINAL.

Expect a high volume of traffic for RWY 09L/27R from OPPOSITE-DIRECTION base legs.

After exiting, and south of RWY 09R/27L, contact Sun 'n Fun ground advisory on 126.075 for parking information.

Use caution for numerous aircraft operating South of RWY 09R/27L at and below 2000 FT MSL.

IMPORTANT – RWY 09R has a displaced threshold. If you require the full length (8500ft) advise the tower.

CHOPPERTOWN**VFR ARRIVAL/DEPARTURE
CERTIFICATED HELICOPTERS**

Approach the airport from the Southeast at or below 500 feet MSL.

Announce call sign, location, and intentions on Helicopter ADVISORY frequency 123.025.

Example: "N1234, 3 South on the Helicopter arrival."

REMAIN in the helicopter corridor. Remain east of the large hangars to avoid the Paradise City flight pattern.

PARK in the grass East of Taxiway E.

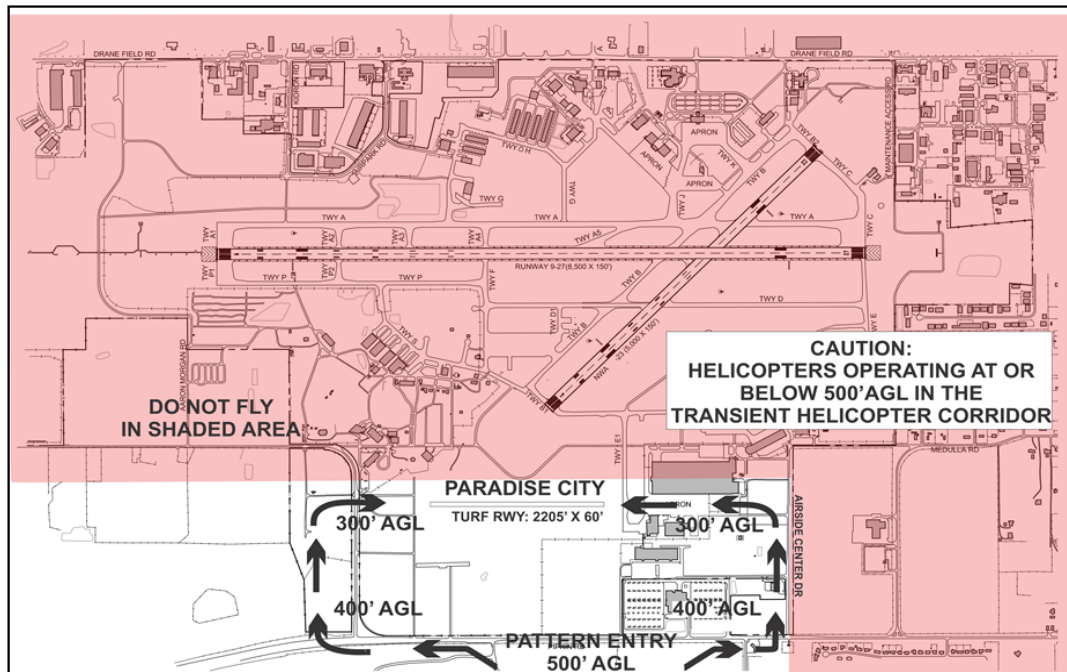
REMAIN EAST of TWY E at all times. YIELD TO TAXIING AIRCRAFT.

Helicopters MAY NOT DEPART/ARRIVE DURING AIRFIELD CLOSURES.

All pilots must attend a briefing prior to departure from Choppertown. Briefing times are available at the Choppertown ADVISORY Tower.

PARADISE CITY

ARRIVAL/DEPARTURE*



RWY 08/26 will be closed from 1400 EDT (1800 UTC) March 31 through 1600 EDT (2000 UTC) April 19. A turf strip will be available, 2205 FT long x 60 FT wide with displaced thresholds on each end. A ditch runs parallel to the south side of the strip.

Inbound traffic approach LAL from the south at 500 FT AGL. Enter the pattern on the downwind leg at a forty-five (45) degree angle.

AVOID South Lakeland Airport (X49) 3.5 NM SW of LAL due to extensive aircraft activity. Be alert for heavy traffic in the airspace surrounding LAL. Use caution for HELICOPTER operations at the same altitudes just east of Paradise City.

DO NOT FLY NORTH of the Paradise City turf strip or east of Airside Center Drive.

MONITOR Paradise City ADVISORY frequency 123.825 with enough time to receive advisories. **Note:** The frequency is used for airport ADVISORY information and pilot communications. It is NOT intended/authorized for Air Traffic Control clearances, sequencing, or separation of aircraft.

All pilots MUST ATTEND A PILOT BRIEFING PRIOR TO DEPARTURE from Paradise City. Briefing times are available in the Paradise City main tent.

***Note** – Paradise City operation is limited to Ultralight Aircraft (14 CFR 103), Light Sport Aircraft (SLSA), Experimental Light Sport Aircraft (ELSA), and Homebuilt rotorcraft (Ultralight or Experimental). Aircraft not included in these descriptions may apply through the Paradise City chairman for special authorization by the Sun 'n Fun Director of Operations. VFR Daytime Operations only.

IFR PROCEDURES

Special air traffic procedures are effective for IFR aircraft operating to/from the following airports:

AIRPORT	IDENTIFIER
Lakeland Linder Regional Airport	LAL
Plant City Municipal Airport	PCM
Bartow Municipal Airport	BOW
Lake Wales Municipal Airport	X07
Winter Haven Gilbert Airport	GIF

TRAFFIC MANAGEMENT

Traffic Management Initiatives will be utilized when arrival rates exceed airport capacity. Pilots should prepare for potential airborne holding, reroutes, or Expect Departure Clearance Times (EDCT's) issued for **domestic IFR arrivals**.

Heavy demand periods are expected **DAILY 0700 – 1959 EDT (1100 – 2359 UTC)**

IFR TRAFFIC

Due to traffic congestion and ARTCC radar limitations, southbound traffic filed over CHS via V1 should request 8,000 feet or above. Traffic filed V1 at 6,000 feet and below will be rerouted via V437.

Duplicate flight plans (same time/call sign) to multiple airport destinations are subject to removal.

Do NOT request air-filed flight plans or make airborne destination changes to/from the airports listed. Except in an emergency, requests will not be accepted within 200NM of LAL.

NOTE – Please be familiar with the Sun 'n Fun – Lake Parker Arrival and Departure Procedures.

IFR PREFERRED ARRIVAL ROUTES

IFR arrivals through Jacksonville Air Route Traffic Control Center (ZJX ARTCC) file via the following routes:

AREA	ROUTE
V579 & West	CTY OCF LAL (dest.)
East of V579 to V267	TAY OCF GNV LAL (dest.)
East of V267	V3 SSI V441 OCF LAL (dest.) or V1 STARY SSI V441 OCF LAL (dest.)

IFR PROCEDURES *(Continued)*

IFR ARRIVALS

When Lakeland ceiling and visibility are reported at or above 3,000 feet and five (5) miles, plan to cancel IFR and expect a vector to the vicinity of Lake Parker for a VFR approach following the Sun 'n Fun – Lake Parker Arrival Procedures.

JET AIRCRAFT ARE NOT RECOMMENDED OVER LAKE PARKER. Expect ATC vectors to final RWY 09R/27L.

Pilots retaining IFR clearance until landing must contact Tampa Approach on 120.65 after exiting the runway to cancel IFR.

IFR DEPARTURES

File your flight plan at least four (4) hours prior to proposed departure time. IFR flight plans not activated will expire ninety (90) minutes after proposed departure time.

Prior to engine start, place a sign in your windshield with the letters “**IFR**” to indicate to the flagmen you intend to depart IFR.

MONITOR ATIS on 118.025. IFR departures will be instructed via ATIS to contact Ground Control on 124.15 or 121.4.

Contact Ground Control as instructed for clearance. DO NOT TAXI until enroute clearance is received. If you have not received initial departure instructions prior to reaching the runway, attempt to taxi your aircraft to a position that will allow other VFR aircraft to pass for departure.

DO NOT accept FAA flagman's instructions to enter the runway or take off unless you have received departure release from Ground Control.

IFR OVERFLIGHTS

IFR overflight traffic at and below 15,000 feet MSL expect routing to avoid congested areas.

IFR PICK UP/VFR FLIGHT FOLLOWING

IFR pick-up and VFR flight following procedures are required for the following Lakeland area airports:

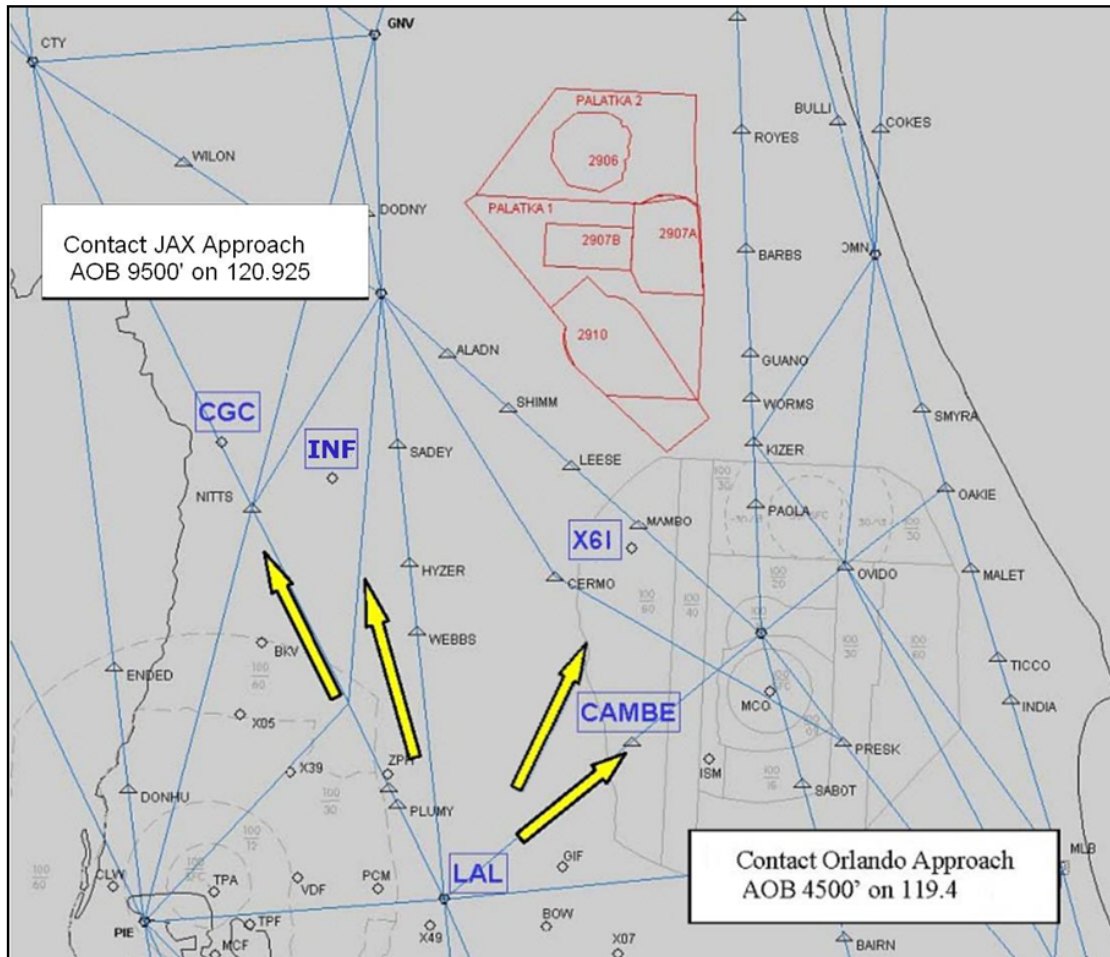
AIRPORT	IDENTIFIER
Lakeland Linder Airport	LAL
Plant City Airport	PCM
Gilbert Field Municipal Airport (Winter Haven)	GIF
Tampa Executive Airport	VDF
Peter O. Knight Airport	TPF
Bartow Municipal Airport	BOW
Zephyrhills Municipal Airport	ZPH
South Lakeland Airpark	X49
Lake Wales Airport	X07

IMPORTANT– When weather at Lakeland or along your route of flight is MARGINAL VFR, it is STRONGLY suggested that you FILE IFR off your departure airport and receive your IFR clearance/departure release ON THE GROUND. Tampa, Orlando, and Jacksonville Approaches may not be able to issue IFR pick-up clearances due to traffic volume and complexity.

Destinations to the Northeast and East coast through Orlando Approach: Orlando Approach is unable to retrieve flight plan information or activate IFR clearances for aircraft requesting an IFR pick up that file off the Lakeland area airports. Aircraft departing VFR from the LAL area destined to the east coast or northeast must file a flight plan showing CAMBE intersection or X61 (Bob White Airport) as their departure point in order to receive airborne IFR clearance. Enter **AIRFILE** or **IFR PICK UP** in the remarks section of the flight plan. MONITOR first then contact Orlando Approach at or below 4,500 feet on 119.4. Remain clear of Orlando Class B airspace.

Destinations to the North or Northwest through Jacksonville Approach: Jacksonville Approach is unable to retrieve flight plan information or activate IFR clearances for aircraft requesting an IFR pick up that file off the Lakeland area airports. Aircraft departing VFR from the LAL area destined to the north or northwest must file a flight plan showing either CGC (Crystal River Airport) or INF (Inverness Airport) as their departure point in order to receive airborne IFR clearance. Enter **AIRFILE** or **IFR PICK UP** in the remarks section of the flight plan. Approximately ten (10) miles south of CGC/INF, MONITOR first then contact Jacksonville Approach at or below 9,500 feet on 120.925.

Departing from a Lakeland area airport through Tampa Approach: Tampa Approach may be unable to issue an IFR pick up clearance due to heavy traffic volume if you depart VFR from one of the Lakeland area airports. Due to anticipated frequency congestion, aircraft not complying with these procedures should NOT expect to receive airborne IFR pickup clearance or VFR flight following until NORTH OF THE FLORIDA/GEORGIA BORDER.

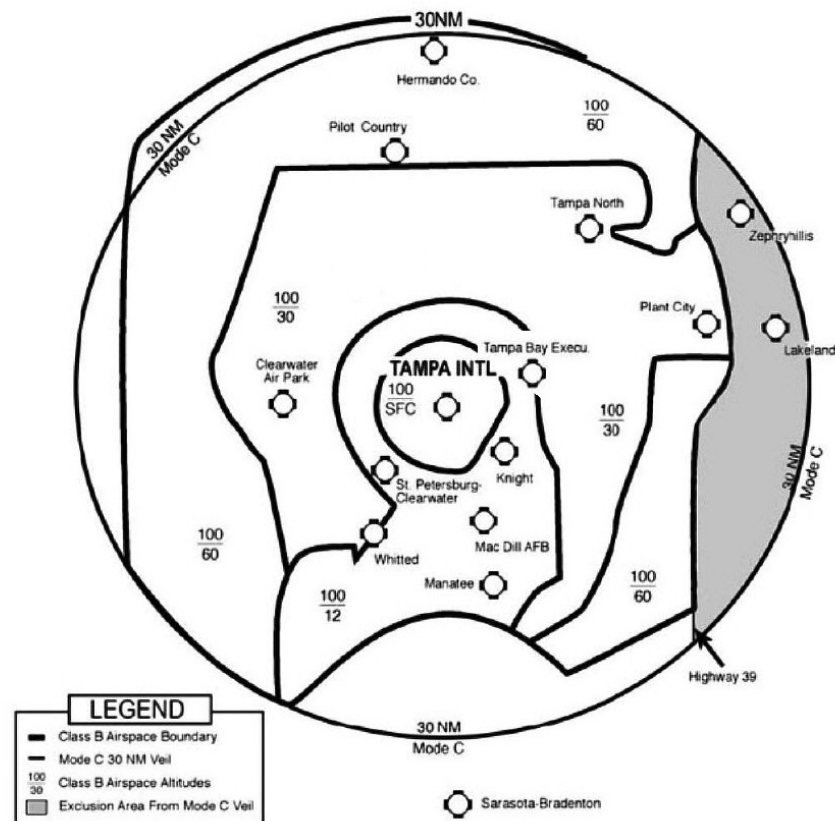
IFR PICK UP/VFR FLIGHT FOLLOWING *(Continued)*

DO NOT USE FOR NAVIGATION: NOT TO SCALE

REQUESTS TO DEVIATE FROM MODE C TRANSPONDER REQUIREMENT

TAMPA AREA

TAMPA CLASS B MODE C VEIL



DO NOT USE FOR NAVIGATION: NOT TO SCALE

Operators of aircraft not equipped with Mode C transponders may operate within the Tampa Class B Mode C veil to attend the Sun 'n Fun Fly-In at Lakeland Linder Regional Airport along the following ATC-designated route:

Fly-In by remaining at and below 2500 FT MSL east of HWY 39. Remain outside of the Tampa Class B airspace lateral boundary. Aircraft must follow Sun 'n Fun Lakeland Linder Regional Airport arrival/departure procedures .

CAUTION: *This notice does not constitute authorization to enter the Tampa Class B airspace.*

REQUESTS TO DEVIATE FROM MODE C TRANSPONDER REQUIREMENT

ORLANDO AREA

ORLANDO CLASS B MODE C VEIL

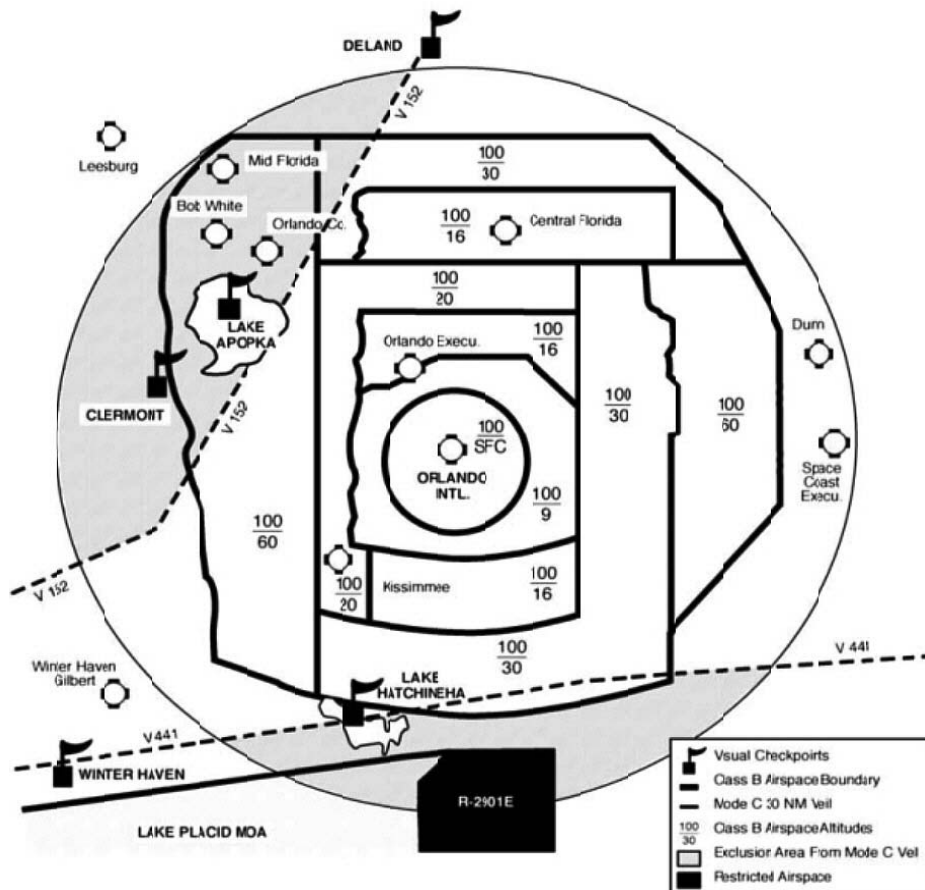
Operators of aircraft not equipped with Mode C transponders may operate within the Orlando Class B Mode C veil to attend the Sun 'n Fun Fly-In at Lakeland Linder Regional Airport along the following ATC-designated routes:

Northwest portion of Orlando Class B:

At or below 2,500 FT MSL along a route that passes over the city of Deland, Lake Apopka, and the City of Clermont. Remain northwest of V152.

Southern portion of Orlando Class B:

At or below 2,500 FT MSL south of V441 along a route over the center of Lake Hatchineha and east of the City of Winter Haven. Remain outside of the lateral boundaries of the Orlando Class B airspace and outside R-2901E.



DO NOT USE FOR NAVIGATION: NOT TO SCALE

CAUTION: This notice does not constitute authorization to enter the Orlando Class B airspace.

REQUESTS TO DEVIATE FROM MODE C TRANSPONDER REQUIREMENT *(Continued)*

EXCEPTIONS

Per 14 CFR 91.215, aircraft without electrical systems, balloons, and gliders are exempt from the Mode C transponder requirement when operating within the Orlando and Tampa Mode C veil. ATC authorization to deviate from transponder requirement is not required.

OTHER REQUESTS FOR AUTHORIZATIONS ORLANDO APPROACH

Requests to operate along other than the routes specified above must be submitted to Orlando Approach in accordance with 14 CFR 91.215. Such requests will not be considered approved without the express written authorization signed by the Orlando Manager or designee.

Operations conducted in accordance with the procedures outlined in this notice must remain outside the Orlando Class B airspace unless otherwise authorized by Orlando Approach.

FLIGHT SERVICE INFORMATION

Pilot briefing and flight planning services are available online through the Leidos Pilot Portal at <https://www.1800wxbrief.com/Website/> or by contacting Leidos Flight Service at 1-800-WX-BRIEF (1-800-992-7433).

INBOUND VFR FLIGHT PLANS

Filing flight plans:

Pilots should allow for unexpected delays and add an additional 30 minutes when filing their ETE.

Pilots should ensure the color of their aircraft is included in the remarks section of their VFR flight plan.

Pilots are requested to close their flight plans while airborne. Due to the large number of aircraft, pilots may encounter up to a 30-minute delay in parking their aircraft.

Contacting Flight Service by Radio:

On initial call-up, advise flight service of your full aircraft identification and which frequency you are using.

When transmitting on 122.1 and listening to the VOR, remember to check that volume is up.

Due to frequency congestion, air files and in-flight full route weather briefings are discouraged.

REMEMBER TO CLOSE YOUR VFR FLIGHT PLANS

PLANT CITY (PCM) AIRPORT

In response to increased air traffic at Plant City Airport (PCM) during the Lakeland Sun 'n Fun Fly-In, the following procedures will be used to enhance safety and minimize air traffic delays.

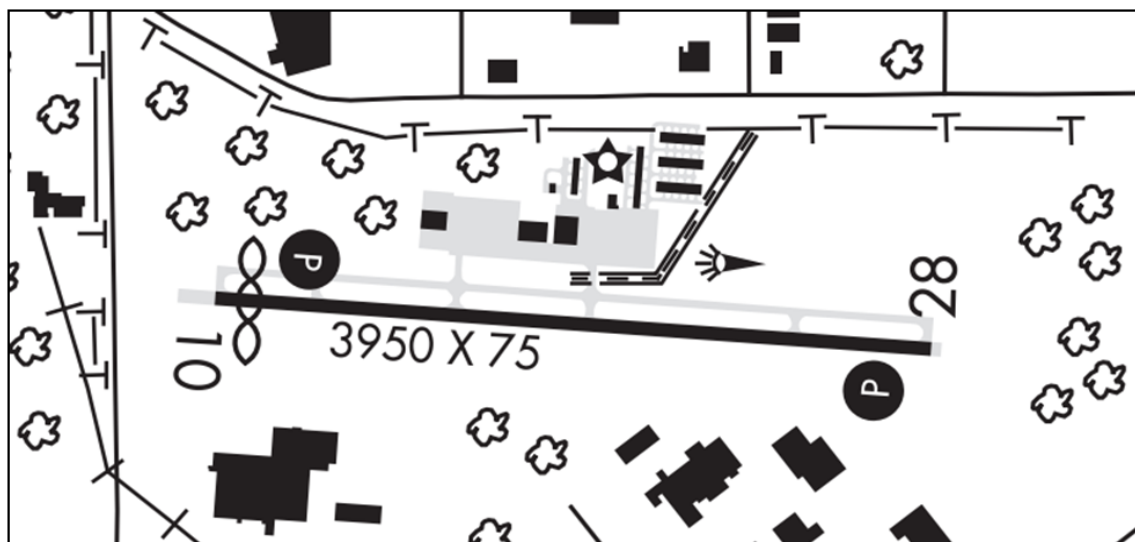
A Non-Federal Temporary Air Traffic Control Tower (NFCT) will be in operation on the following dates/times:

DATES	HOURS EDT	HOURS UTC
Tuesday, April 10	0900–1400	1300–1800
Wednesday, April 11 – Saturday, April 14	0900–1800	1300–2200
Sunday, April 15	0900–1200	1300–1600

PCM NFCT FREQUENCIES	
Tower	127.6
Unicom	123.05
CTAF (when Tower closed)	123.05

Traffic pattern will be left traffic for RWY 10 or RWY 28 unless otherwise advised by ATC. Plan to approach the airport from the north or south to avoid Tampa Class B airspace and Lakeland high-density traffic.


Unless otherwise advised by ATC, departures turn north or south one (1) mile after takeoff to avoid Tampa Class B airspace and Lakeland high-density traffic




SUN 'N FUN FREQUENCIES

LAKELAND AREA			
Lakeland Arrival ATIS	128.575	Lakeland Departure ATIS	118.025
Lake Parker Arrival	124.5	Sun 'n Fun Ground Advisory	126.075
Lakeland Ground Control	121.4	Lakeland IFR Ground Control	124.15
Lakeland Helicopter	123.025	Lakeland VOR	116.0
Warbird Parking Advisory	125.025	Lakeland UHF	236.775
Lakeland Tower North	135.225	Lakeland Tower South	118.35
RWY 9L/27R Departure Monitor	133.125	RWY 9R/27L Departure Monitor	127.850
Paradise City Advisory	123.825		
TAMPA (TPA) APPROACH		PLANT CITY (PCM) AIRPORT	
E of Tampa SFC–4,000'	119.9	Tower	127.6
E of Tampa 4,500'–12,000'	135.5	Unicom	123.05
W of Tampa SFC–4,000'	125.3	CTAF (When tower closed)	123.05
W of Tampa 4,500'–12,000'	118.8		
SRQ Area SFC–4,000'	119.65		
SRQ Area 4,500'–12,000'	134.25	DAYTONA (DAB) APPROACH	
Tampa Tower	119.5	N of Daytona SFC–3,500'	125.8
LAL IFR Arrivals Cancelling	120.65	N of Daytona 4,000'–11,000'	118.85
		SW of Daytona SFC–3,500'	126.55
ORLANDO (F11) APPROACH		SSE of Daytona SFC–3,500'	125.35
CAMBE int. 4,500' & Below	119.4	S of Daytona 4,000'–11,000'	127.07
N of Orlando	121.1		
SE of Orlando	119.77	JACKSONVILLE (ZJX) ARTCC	
		TAY Surface & Above	125.37
JACKSONVILLE (JAX) APPROACH		CTY Area 10,500' & Above	128.05
Vicinity of GNV – 28J – PGD		OCF Area 10,500' & Above	133.325
SFC to 6,000	118.17		
6,500 to 10,000	121.3	MIAMI (ZMA) ARTCC	
Vicinity of X60 – OCF – LEE		S of Lakeland 9,000' & Below	134.55
SFC to 6,000	118.6	S of Lakeland 10,000' & Above	127.2
6,500 to 10,000	128.67	SRQ Area 13,000' & Above	132.35
VFR Following/IFR Pick-up	120.925	LBV Area	132.45
OTHER FLIGHT SERVICE (AFSS)			
BKV	122.3	ORL	123.65
FT DRUM	122.2	PGD	122.025
LAL (receive)	116.0	PIE	122.45
LAL (transmit)	122.1	PIE	123.6
MLB	122.6	SEF	122.25
OMN	122.4	SRQ (receive)	117.0
OMN (receive)	112.6	SRQ (transmit)	122.1
OMN (transmit)	122.1	TIX	123.6
ORL	122.65	VRB	122.5

JANUARY – 2019							FEBRUARY – 2019							MARCH – 2019						
SUN	MON	TUE	WED	THU	FRI	SAT	SUN	MON	TUE	WED	THU	FRI	SAT	SUN	MON	TUE	WED	THU	FRI	SAT
		1	2	3	4	5						1	2						1	2
6	7	8	9	10	11	12	3	4	5	6	7	8	9	3	4	5	6	7	8	9
13	14	15	16	17	18	19	10	11	12	13	14	15	16	10	11	12	13	14	15	16
20	21	22	23	24	25	26	17	18	19	20	21	22	23	17	18	19	20	21	22	23
27	28	29	30	31			24	25	26	27	28			24	25	26	27	28	29	30
														31						
APRIL – 2019							MAY – 2019							JUNE – 2019						
SUN	MON	TUE	WED	THU	FRI	SAT	SUN	MON	TUE	WED	THU	FRI	SAT	SUN	MON	TUE	WED	THU	FRI	SAT
	1	2	3	4	5	6				1	2	3	4							1
7	8	9	10	11	12	13	5	6	7	8	9	10	11	2	3	4	5	6	7	8
14	15	16	17	18	19	20	12	13	14	15	16	17	18	9	10	11	12	13	14	15
21	22	23	24	25	26	27	19	20	21	22	23	24	25	16	17	18	19	20	21	22
28	29	30					26	27	28	29	30	31		23	24	25	26	27	28	29
														30						
JULY – 2019							AUGUST – 2019							SEPTEMBER – 2019						
SUN	MON	TUE	WED	THU	FRI	SAT	SUN	MON	TUE	WED	THU	FRI	SAT	SUN	MON	TUE	WED	THU	FRI	SAT
	1	2	3	4	5	6					1	2	3	1	2	3	4	5	6	7
7	8	9	10	11	12	13	4	5	6	7	8	9	10	8	9	10	11	12	13	14
14	15	16	17	18	19	20	11	12	13	14	15	16	17	15	16	17	18	19	20	21
21	22	23	24	25	26	27	18	19	20	21	22	23	24	22	23	24	25	26	27	28
28	29	30	31				25	26	27	28	29	30	31	29	30					
OCTOBER – 2019							NOVEMBER – 2019							DECEMBER – 2019						
SUN	MON	TUE	WED	THU	FRI	SAT	SUN	MON	TUE	WED	THU	FRI	SAT	SUN	MON	TUE	WED	THU	FRI	SAT
		1	2	3	4	5						1	2	1	2	3	4	5	6	7
6	7	8	9	10	11	12	3	4	5	6	7	8	9	8	9	10	11	12	13	14
13	14	15	16	17	18	19	10	11	12	13	14	15	16	15	16	17	18	19	20	21
20	21	22	23	24	25	26	17	18	19	20	21	22	23	22	23	24	25	26	27	28
27	28	29	30	31			24	25	26	27	28	29	30	29	30	31				

 = Cutoff dates for submitting NOTAMs to AJV-5 for next publication. (Twenty-three (23) days before effective date.)

 = Effective dates and cutoff dates for submitting information to the Publications Staff, AJV-8 for next publication. (Twenty-eight (28) days before next effective date.)