



FLY-IN

OCTOBER 5-6, 2018

**SOUTHERN ILLINOIS AIRPORT (MDH)
CARBONDALE, IL**



NOTAM

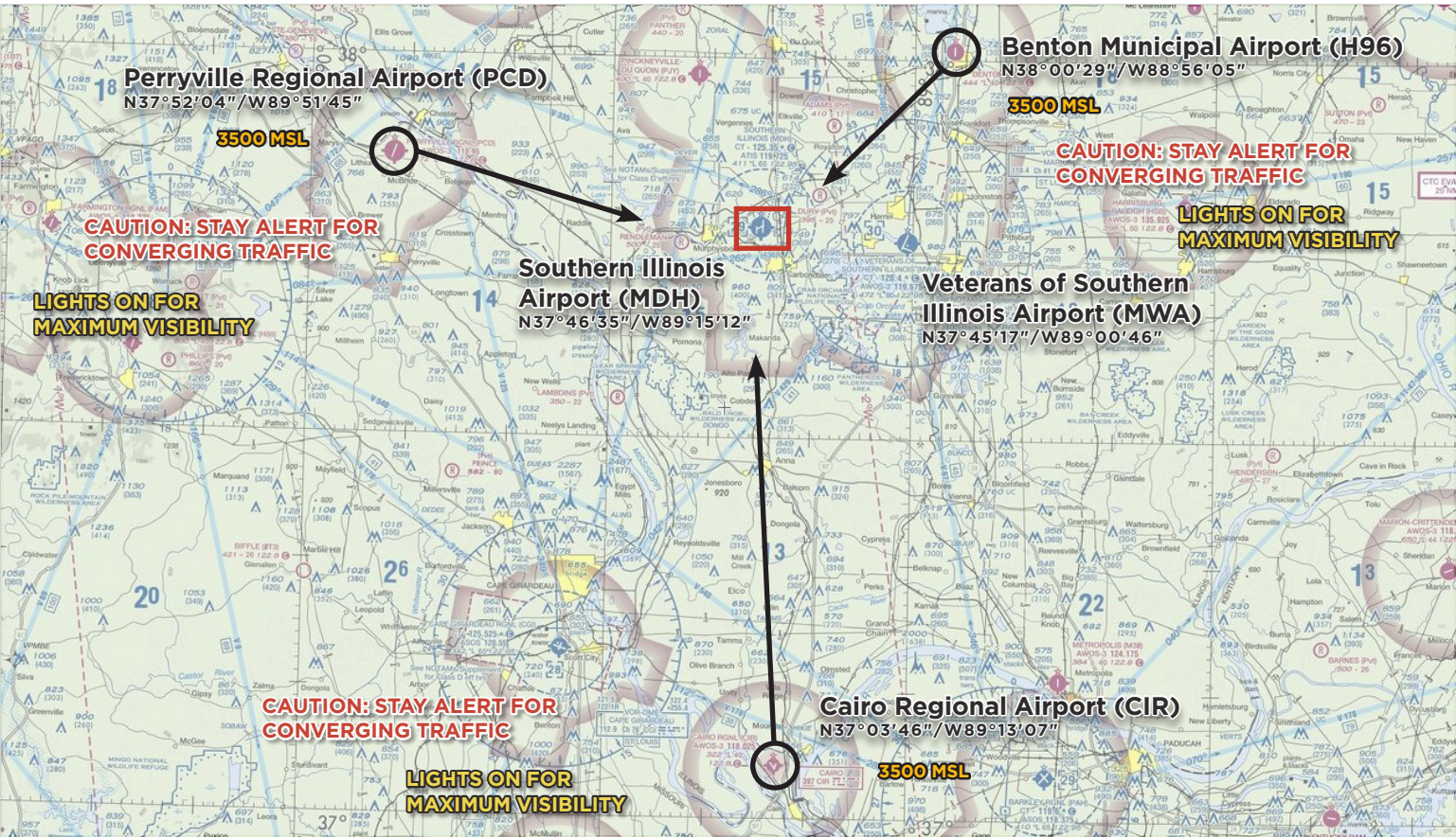
SPECIAL FLIGHT PROCEDURES

EFFECTIVE:

Thursday	Oct 4, 2018	12:00 NOON	CDT	until	6:30 PM CDT
Friday	Oct 5, 2018	7:00 AM	CDT	until	6:30 PM CDT
Saturday	Oct 6, 2018	7:00 AM	CDT	until	6:00 PM CDT



VFR ARRIVALS OVERVIEW



Southern ATIS 119.725	Southern Tower 125.35 or 126.25	Southern Ground 121.8
-----------------------	---------------------------------	-----------------------

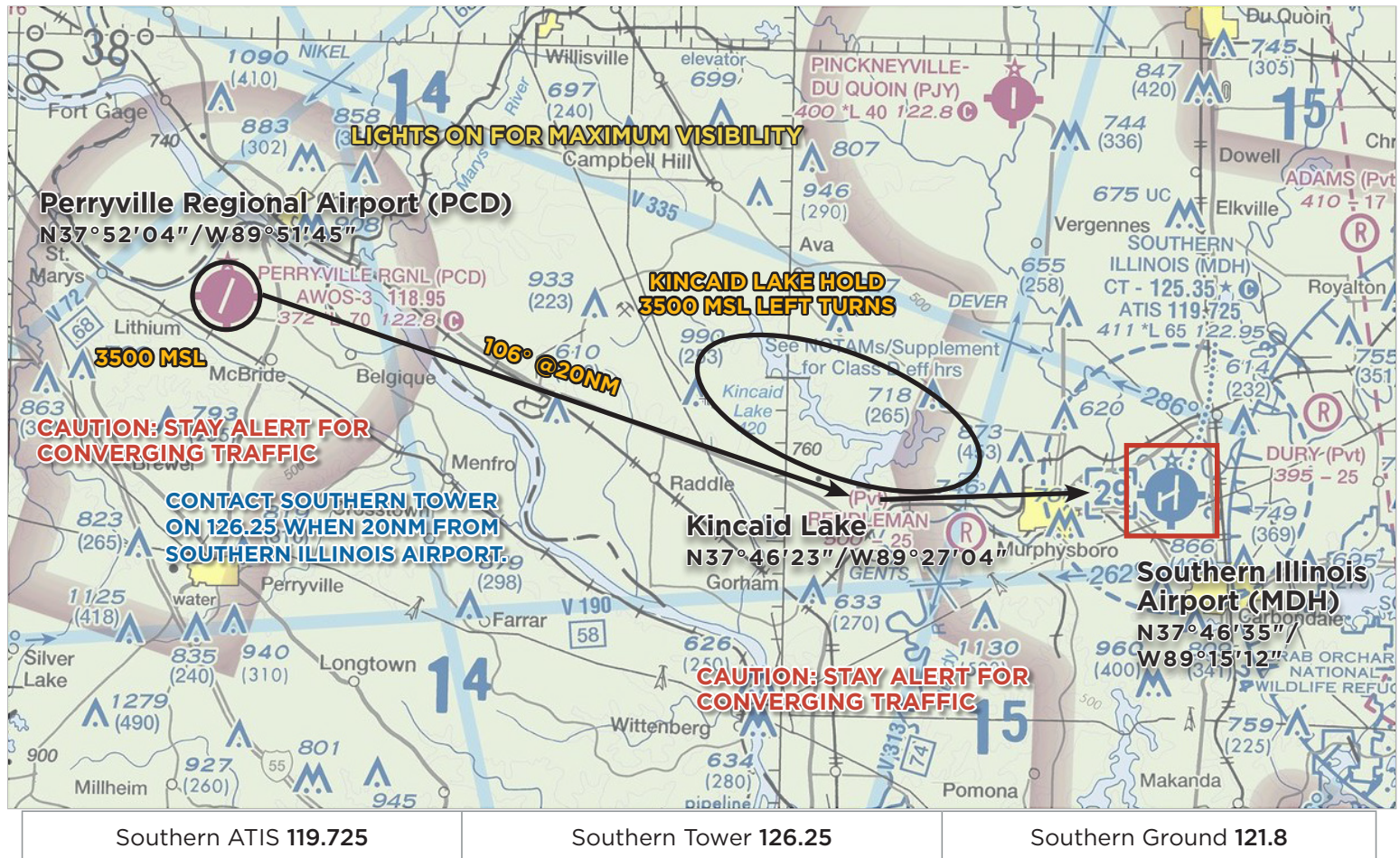
TEMPORARY VFR PROCEDURES

Specific procedures contained within this NOTAM may be revised at the time of the event. Pilots are urged to review all applicable NOTAMs and arrival/departure procedures prior to conducting a flight to Southern Illinois Airport. Users are encouraged to check NOTAMs frequently to verify they possess the most current revisions. This NOTAM does not supersede restrictions pertaining to the use of airspace contained in FDC NOTAMs.

ALL VFR ARRIVALS BEGIN AT:

- Perryville Regional Airport (PCD)**, 30 NM northwest of Southern Illinois Airport (MDH), or
- Benton Municipal Airport (H96)**, 20 NM northeast of Southern Illinois Airport (MDH), or
- Cairo Regional Airport (CIR)**, 43 miles south of Southern Illinois Airport (MDH).

VFR PROCEDURES - Arrivals over Perryville Regional Airport (PCD)



CHECK ATIS ON 119.725 AS SOON AS PRACTICAL.

This procedure begins over Perryville Regional Airport (PCD) at **3500** feet MSL. Contact Southern Tower on **126.25** (**be concise**) when **20** NM from Southern Illinois Airport (MDH).



CAUTION: Stay alert for converging aircraft. Turn on all lights if practical for maximum visibility.

From Perryville Regional Airport, fly direct to the southern tip of Kincaid Lake. Approximate heading of **106°** at **20** NM. If traffic volume requires holding, follow instructions from Southern Tower on **126.25** and expect to fly the hold procedure as depicted in the **KINCAID LAKE VFR HOLD GRAPHIC**. All aircraft should fly left turns at **3500** feet MSL.

When Southern Tower announces that holding is no longer required, aircraft should proceed inbound toward Southern Illinois Airport. Approximate heading **090°** at **9** NM. Begin descent as directed by Southern Tower or at pilot's discretion. *Aircraft in the hold should complete the hold and exit at the southern tip of Kincaid Lake before proceeding inbound toward MDH.*



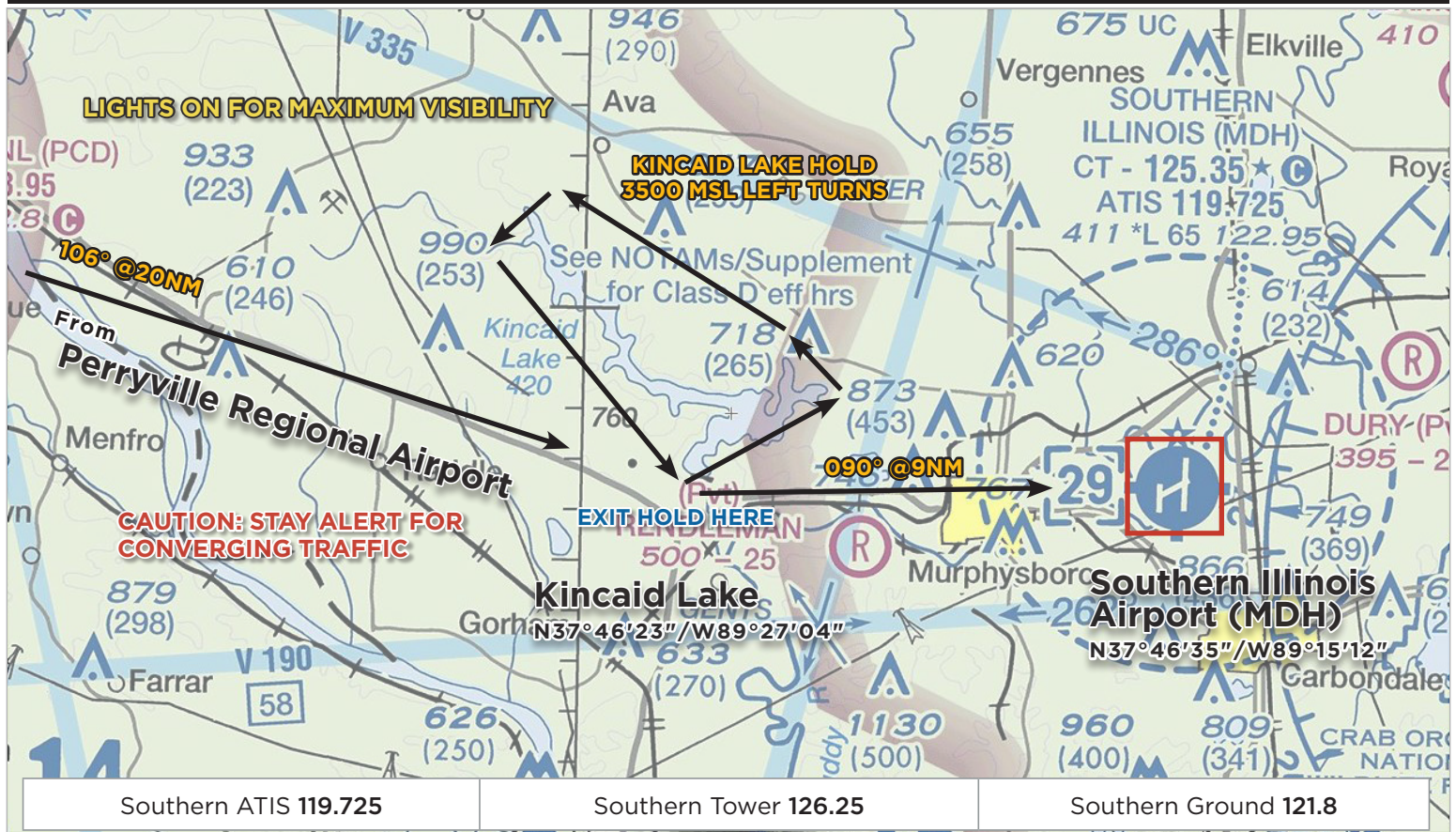
CAUTION: Stay alert for converging aircraft.

Follow landing instructions from Southern Tower on **126.25**.

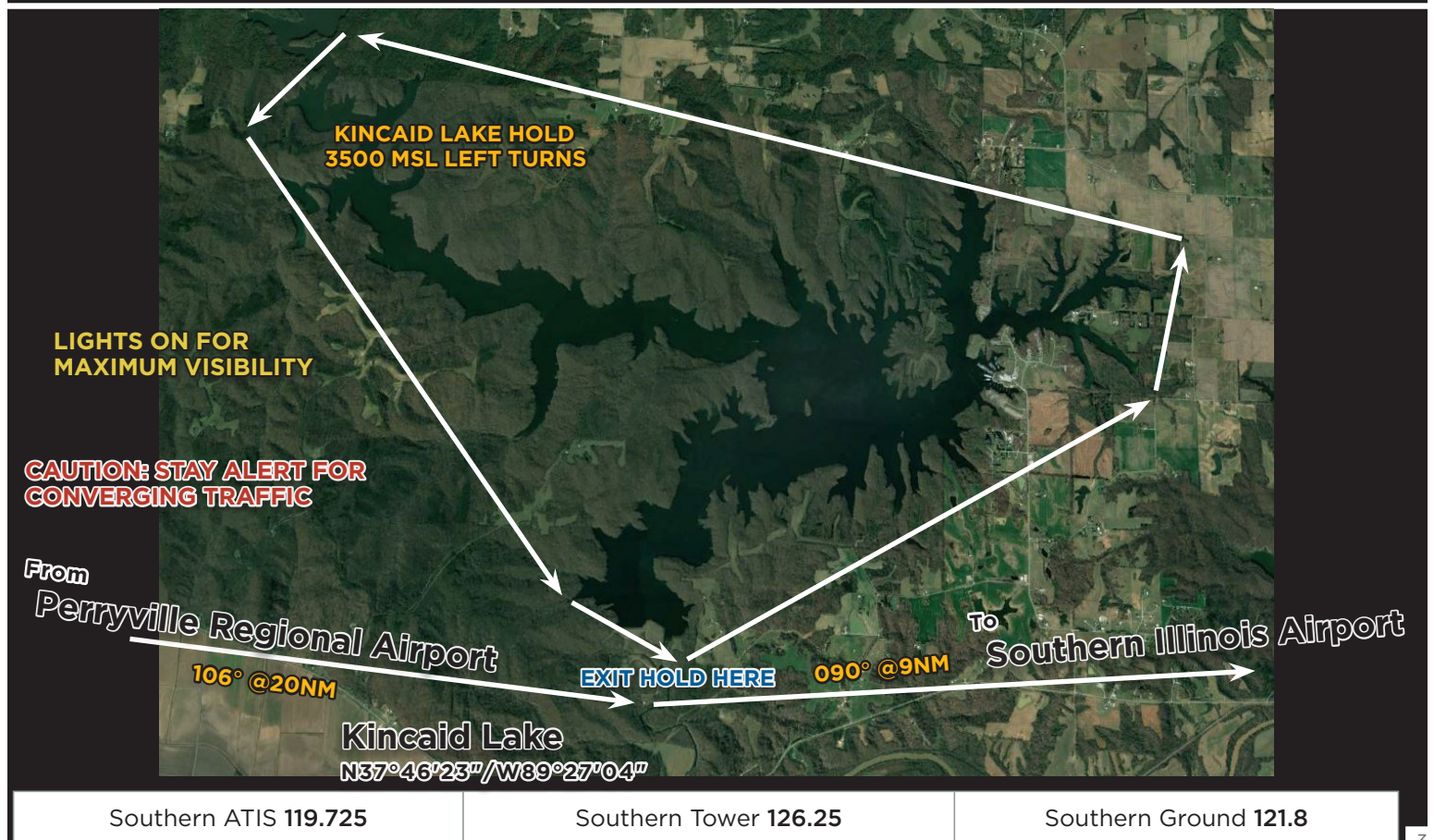
MDH TPA: 1400 feet MSL

After landing, do not stop on the runway unless necessary. Exit the runway as quickly and as safely as possible at the first available taxiway. Continue far enough forward so as not to block subsequent arrivals. **UNLESS OTHERWISE INSTRUCTED BY SOUTHERN TOWER**, continue to **taxiway B** and **MONITOR** Ground on **121.8**. Follow instructions to the designated parking areas. Marshalls will guide you to a parking space once you have arrived in the non-movement/aircraft parking area.

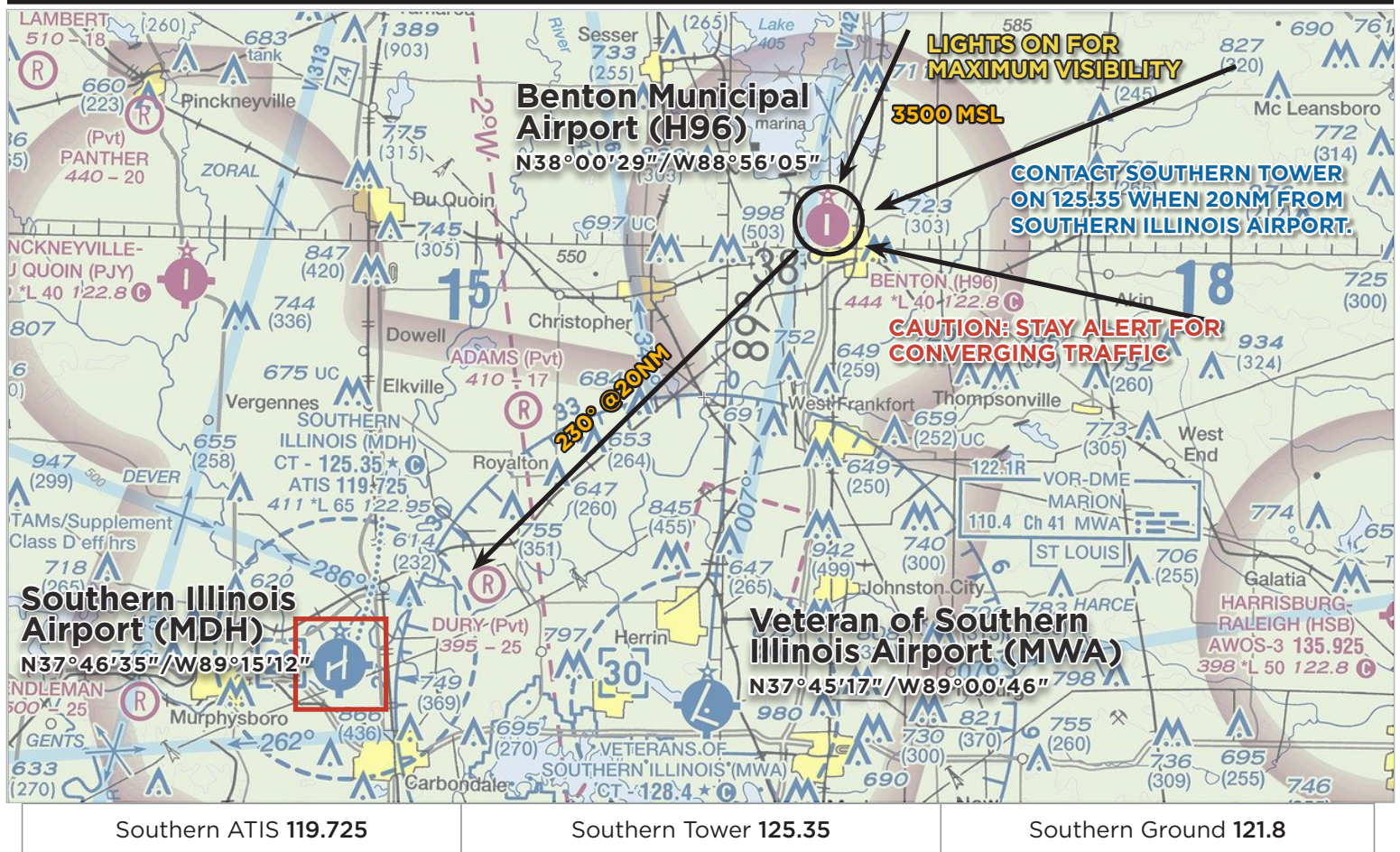
VFR PROCEDURES - Kincaid Lake Hold



VFR PROCEDURES - Kincaid Lake Hold



VFR PROCEDURES - Arrivals over Benton Municipal Airport (H96)



CHECK ATIS ON 119.725 AS SOON AS PRACTICAL

This procedure begins over Benton Municipal Airport (H96) at **3500** feet MSL. Contact Southern Tower on **125.35** (**be concise**) when **20** NM from Southern Illinois Airport (MDH).



CAUTION: Stay alert for converging aircraft. Turn on all lights if practical for maximum visibility.

From Benton Municipal Airport, fly direct to Southern Illinois Airport. Approximate heading of **230°** at **20** NM. If traffic volume requires holding, follow instructions from Southern Tower on **125.35** and expect to fly the hold procedure as depicted in the **REND LAKE VFR HOLD GRAPHIC**. All aircraft should fly right turns at **3500** feet MSL.

When Southern Tower announces that holding is no longer required, aircraft should proceed inbound toward Southern Illinois Airport. Approximate heading **230°** at **20** NM. Begin descent as directed by Southern Tower or at pilot's discretion. *Aircraft in the hold should complete the hold and at the southern tip of Rend Lake before proceeding inbound toward MDH.*



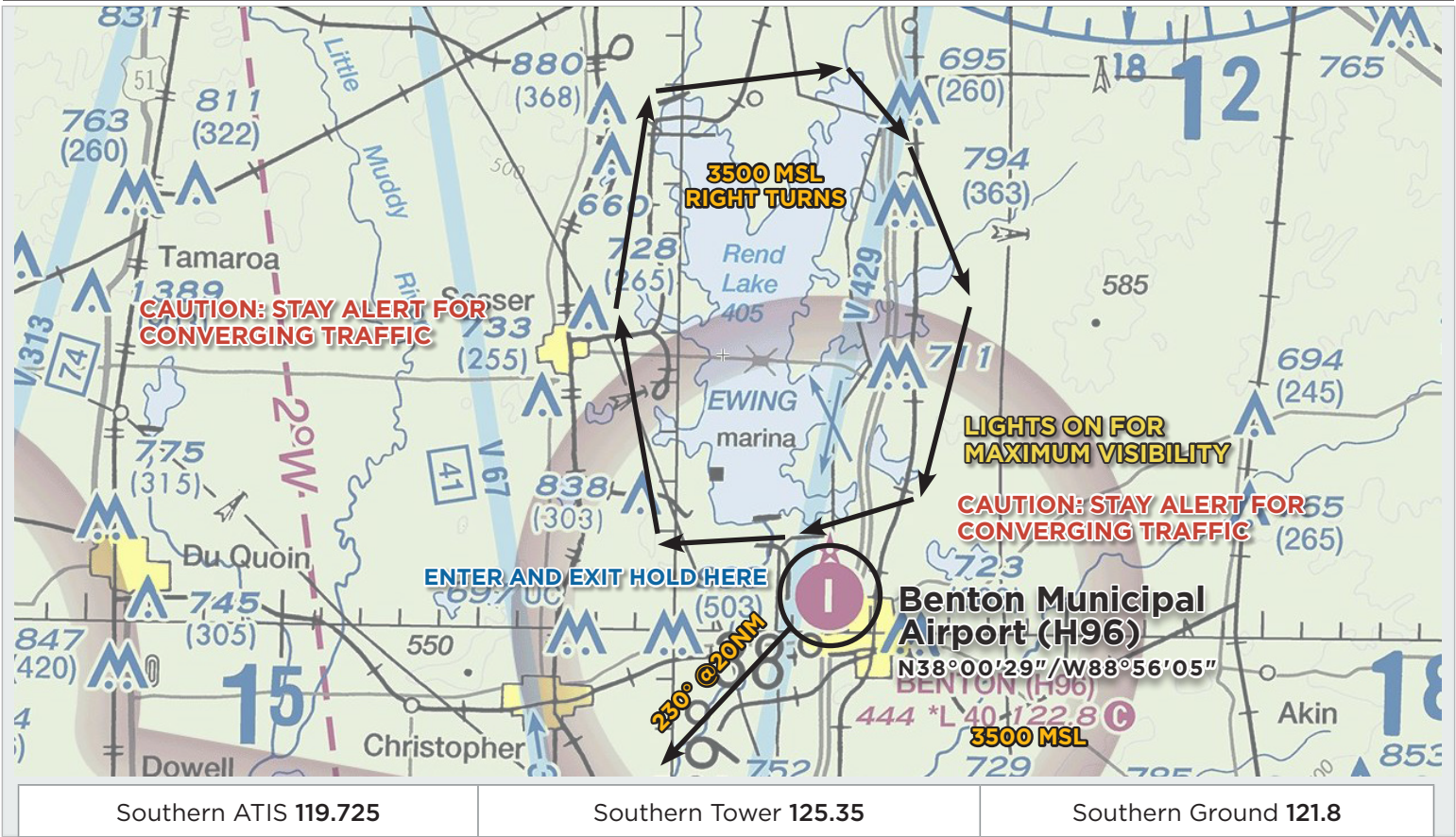
CAUTION: Stay alert for converging aircraft.

Follow landing instructions from Southern Tower on **125.35**.

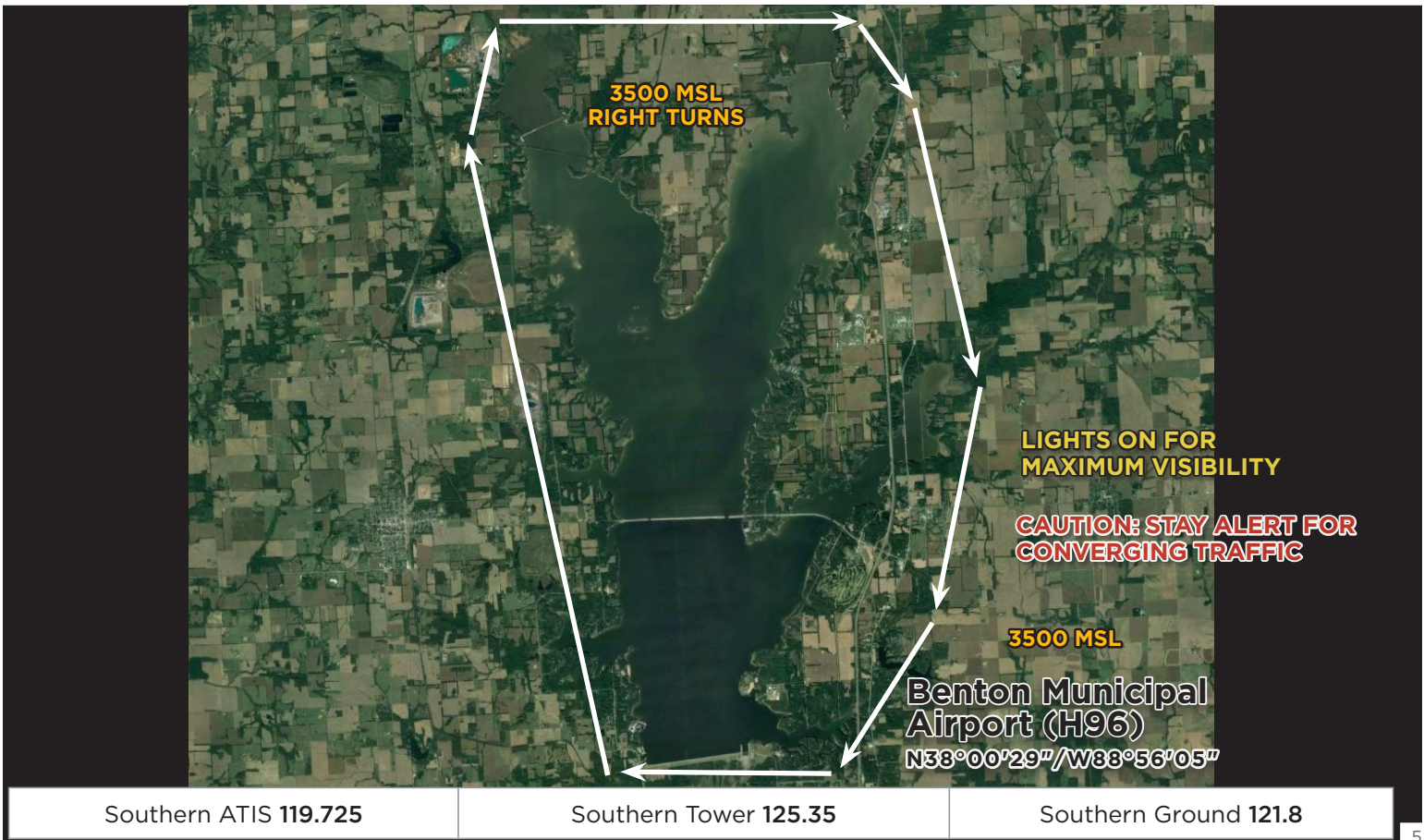
MDH TPA: 1400 feet MSL

After landing, do not stop on the runway unless necessary. Exit the runway as quickly and as safely as possible at the first available taxiway. Continue far enough forward so as not to block subsequent arrivals. **UNLESS OTHERWISE INSTRUCTED BY SOUTHERN TOWER**, continue to **taxiway B** and **MONITOR** Ground on **121.8**. Follow instructions to the designated parking areas. Marshalls will guide you to a parking space once you have arrived in the non-movement/aircraft parking area.

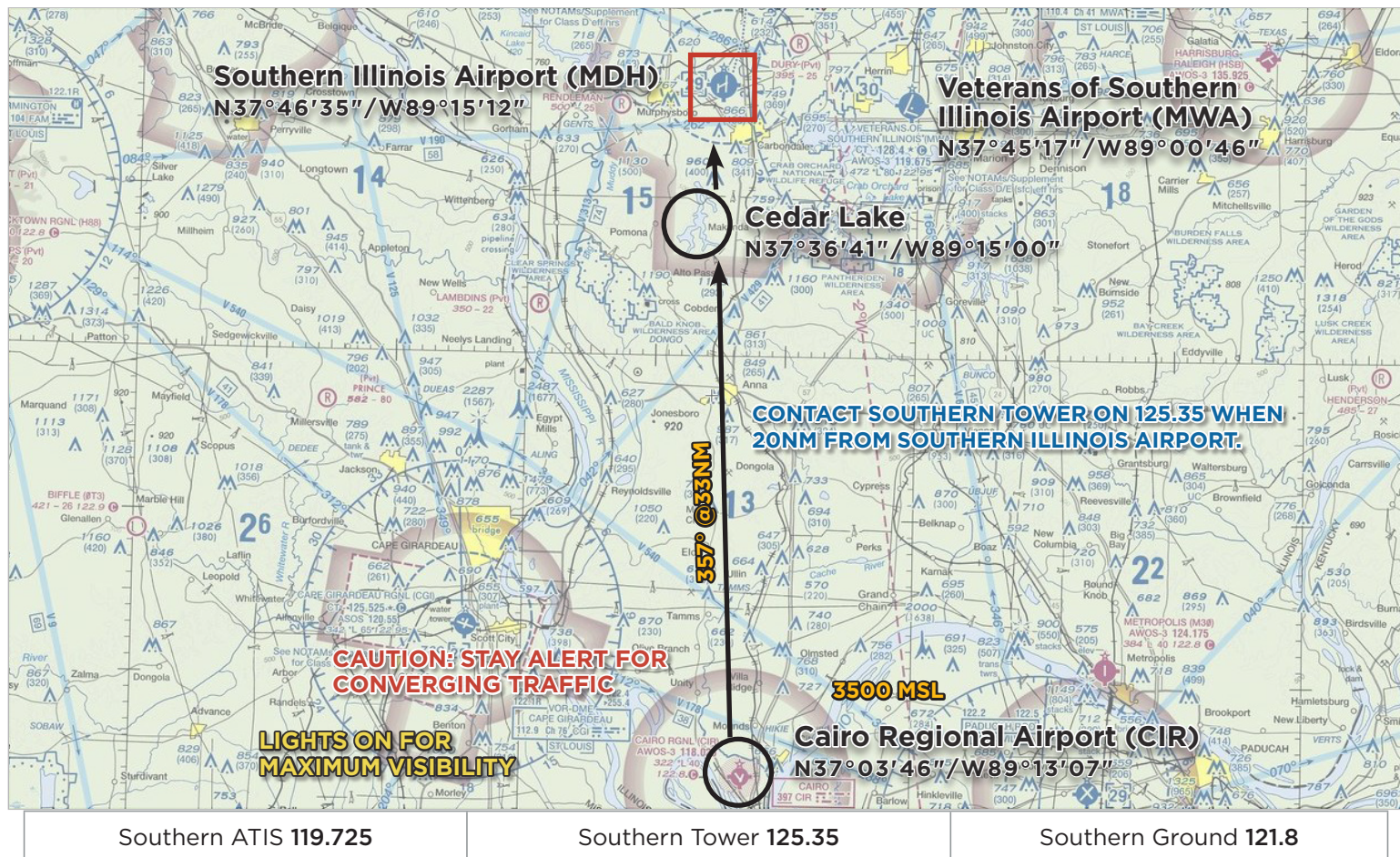
VFR PROCEDURES - Rend Lake Hold



VFR PROCEDURES - Rend Lake Hold



VFR PROCEDURES - Arrivals over Cairo Regional Airport (CIR)



CHECK ATIS ON 119.725 AS SOON AS PRACTICAL.

This procedure begins over Cairo Regional Airport (CIR) at **3500** feet MSL. Contact Southern Tower on **125.35** (**be concise**) when **20** NM from Southern Illinois Airport (MDH).



CAUTION: Stay alert for converging aircraft. Turn on all lights if practical for maximum visibility.

From Cairo Regional Airport, fly direct to the southeastern tip of Cedar Lake. Approximate heading of **357°** at **33** NM. If traffic volume requires holding, follow instructions from Southern Tower on **125.35** and expect to fly the hold procedure as depicted in the **CEDAR LAKE VFR HOLD GRAPHIC**. All aircraft should fly left turns at **3500** feet MSL.

When Southern Tower announces that holding is no longer required, aircraft should proceed inbound toward Southern Illinois Airport (MDH). Approximate heading **360°** at **7** NM. Begin descent as directed by Southern Tower or at pilot's discretion. *Aircraft in the hold should complete the hold and exit at the northeastern tip of Cedar Lake before proceeding inbound toward MDH.*



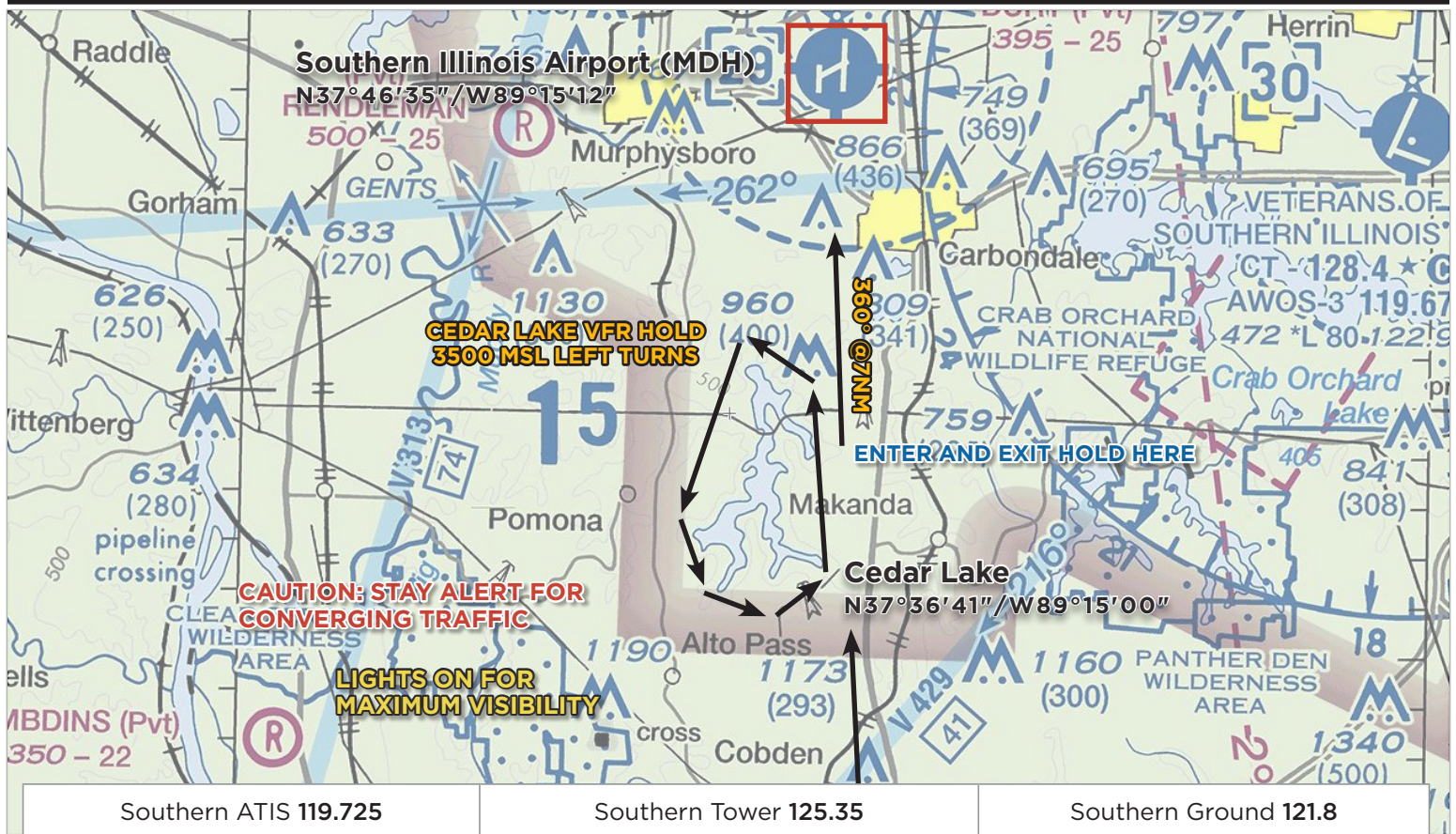
CAUTION: Stay alert for converging aircraft.

Follow landing instructions from Southern Tower on **125.35**.

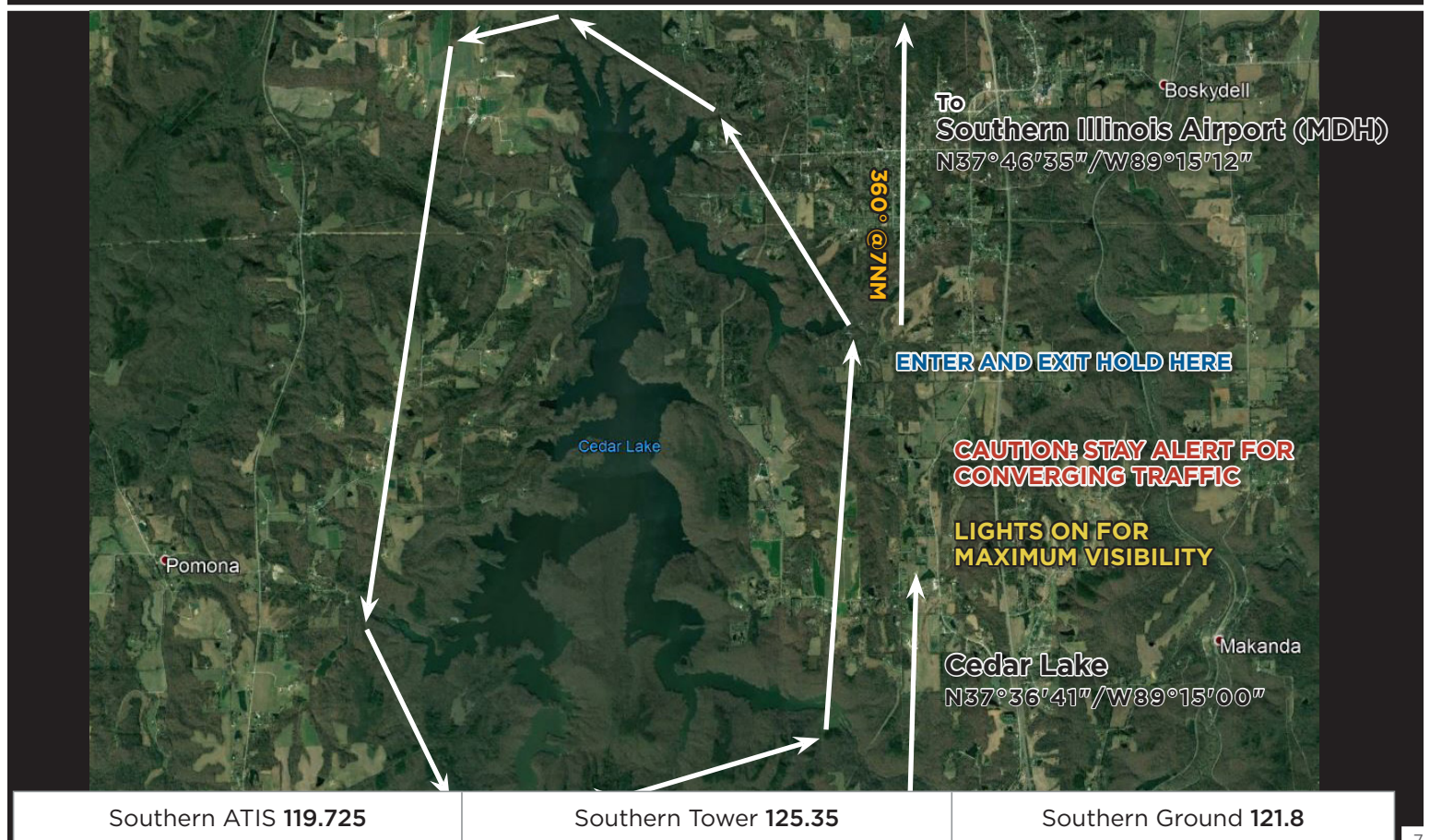
MDH TPA: 1400 feet MSL

After landing, do not stop on the runway unless necessary. Exit the runway as quickly and as safely as possible at the first available taxiway. Continue far enough forward so as not to block subsequent arrivals. **UNLESS OTHERWISE INSTRUCTED BY SOUTHERN TOWER**; continue to **taxiway B** and **MONITOR** Ground on **121.8**. Follow instructions to the designated parking areas. Marshalls will guide you to a parking space once you have arrived in the non-movement/aircraft parking area.

VFR PROCEDURES - Cedar Lake Hold



VFR PROCEDURES - Cedar Lake Hold



VFR PROCEDURES - Perryville Regional Airport (PCD)



PERRYVILLE UNICOM 122.8

Southern ATIS 119.725	Southern Tower 125.35 or 126.25	Southern Ground 121.8
-----------------------	---------------------------------	-----------------------

VFR PROCEDURES - Benton Municipal Airport (H96)



BENTON UNICOM 122.8

Southern ATIS 119.725	Southern Tower 125.35 or 126.25	Southern Ground 121.8
-----------------------	---------------------------------	-----------------------

VFR PROCEDURES - Cairo Regional Airport (CRI)



Southern ATIS 119.725

Southern Tower 125.35 or 126.25

Southern Ground 121.8



SEE AND BE SEEN!

REMEMBER, LIGHTS ON
FOR SAFETY!

IFR DELAYS

There is no Special Traffic Management Program for this event. No arrival or departure reservations are required. IFR separation requirements may cause delays when arrival rates exceed airport capacity. Pilots on an IFR flight plan should be prepared for potential holding. IFR flight plans to Southern Illinois Airport should be filed at least 2 hours prior to proposed departure time.

VFR flight on designated arrival routes is highly recommended if practical.

AIRPORT CLOSURE

Southern Illinois Airport will be closed during the following times during the AOPA Fly-In.

Sunset Thursday, October 4, 2018 to sunrise Friday, October 5, 2018

Sunset Friday, October 5, 2018 to sunrise Saturday, October 6, 2018

Sunset Saturday, October 6, 2018 to sunrise Sunday, October 7, 2018

A **Prior Permission Required (PPR)** number is required to land during those times. To obtain a PPR number, email pmcdonald@siu.edu at least 24 hours prior to intended flight.

HELICOPTER OPERATIONS

Helicopters are not expected to fly the special VFR Arrival Procedures. When inbound, contact Southern Tower on **125.35** as soon as practical for specific instructions.

LOCAL TRAINING AND PRACTICE APPROACHES

Local traffic pattern, closed traffic training, and practice instrument approaches **will not** be available at Southern Illinois Airport (MDH) during the AOPA Fly-In.

NO RADIO AIRCRAFT

Due to high density traffic, aircraft operations without a radio are not recommended.

STUDENT PILOTS

Due to high density traffic, solo student pilot operations are not recommended.

CAUTIONS

Possible lengthy delays associated with heavy arrival and departure times. Heavy arrivals expected **8:00 AM—11:00 AM** Friday and Saturday. Heavy departures expected **3:00 PM—6:00 PM** on Saturday.

Class D Airspace: Veterans Airport of Southern Illinois (MWA); 12 NM east of MDH.

Class B Airspace: St. Louis Lambert International Airport (STL); 49 NM northwest of MDH.

Red Hills MOA: 49 NM northeast of MDH.

Restricted Area R-3702 A-B, Alert Area A-371, and Campbell 1 & 2 MOAs: Approximately 90 NM southeast of MDH.

Lindbergh A, B, & C and Salem MOAs: 64 NM west of MDH.

FREQUENCIES AND WAYPOINT INFORMATION

EN ROUTE FREQUENCIES

Kansas City Center	127.475 (West beyond 40 NM) 127.7 (North/Northeast beyond 40 NM)
Memphis Center	133.65 (South/Southeast beyond 40 NM)
Indianapolis Center	128.3 (East beyond 40 NM)

SOUTHERN ILLINOIS AIRPORT FREQUENCIES

Southern ATIS/ASOS	119.725
ATIS/ASOS telephone number	618-529-1821
Southern Tower	125.35 Benton/Cairo or 126.25 Perryville
Southern Ground	121.8
Southern CTAF	125.35
UNICOM	122.95
Kansas City Center Approach/Departure	127.475

FREQUENCIES AND WAYPOINT INFORMATION - continued

SPECIFIC LATITUDE/LONGITUDE COORDINATES

ARRIVALS OVER PERRYVILLE REGIONAL AIRPORT (PCD)	
Perryville Regional Airport (PCD)	N37°52'04''/W89°51'45''
Kincaid Lake	N37°46'23''/W89°27'04''
Southern Illinois Airport (MDH)	N37°46'35''/W89°15'12''

ARRIVALS OVER CAIRO REGIONAL AIRPORT (CIR)	
Cairo Regional Airport	N37°03'46''/W89°13'07''
Cedar Lake	N37°36'41''/W89°15'00''
Southern Illinois Airport (MDH)	N37°46'35''/W89°15'12''

ARRIVALS OVER BENTON MUNICIPAL AIRPORT (H96)	
Benton Municipal Airport (H96)	N38°00'29''/W88°56'05''
Southern Illinois Airport (MDH)	N37°46'35''/W89°15'12''

DEGREES, MINUTES, SECONDS CONVERTED TO DECIMAL DEGREES

ARRIVALS OVER PERRYVILLE REGIONAL AIRPORT (PCD)	
Perryville Regional Airport (PCD)	37.86777778°/ 89.86250000°
Kincaid Lake	37.77305556°/ 89.45111111°
Southern Illinois Airport (MDH)	37.77638889°/ 89.25333333°

ARRIVALS OVER CAIRO REGIONAL AIRPORT (CIR)	
Cairo Regional Airport (CIR)	37.06277778°/ 89.21861111°
Cedar Lake	37.61138889°/ 89.25000000°
Southern Illinois Airport (MDH)	37.77638889°/ 89.25333333 °

ARRIVALS OVER BENTON MUNICIPAL AIRPORT (H96)	
Benton Municipal Airport (H96)	38.00805556°/ 88.93472222°
Southern Illinois Airport (MDH)	37.77638889°/ 89.25333333°

SOUTHERN ILLINOIS AIRPORT (MDH) GENERAL INFORMATION



PARKING AREAS

- When operating in the parking areas, pilots are encouraged to be extra alert for taxiing aircraft, aircraft with engine(s) running, and vehicle/pedestrian traffic.
- Marshallars will be assisting aircraft to and from parking areas and run-up areas.
- For safety reasons, high RPM engine running is prohibited in designated parking areas. For departure, it is recommended that pilots conduct their run-up procedures in queue if practical.
- Please review the parking map prior to landing and departing.

VEHICULAR TRAFFIC

- Vehicles are not allowed on ramps except those belonging to airport operators and tenants.

PREFLIGHT PLANNING

- Please ensure that you have reviewed the special flight information, departure procedures, and temporary taxi procedures prior to engine start.
- High density traffic is expected Friday and Saturday morning. Consider arriving during off-peak hours.

SOUTHERN ILLINOIS AIRPORT

DEPARTURE PROCEDURES

IFR DEPARTURES

Locate a marshaller to monitor engine start. Place printed large IFR letters in the windshield. Follow marshaller's instructions to taxi to the nearest designated IFR departure holding area. IFR departures should obtain a clearance from Southern Ground on **121.8**. Expect significant delays (5-10 minutes between departures) if departing IFR. Recommend departing VFR, **if practical**, and picking up IFR clearance enroute when beyond **40 NM** from Southern Illinois Airport.

Note: Kansas City Center will not issue airborne IFR clearances within 40 NM of Southern Illinois Airport.

VFR DEPARTURES

VFR Flight Following: Pilots wanting VFR flight-following should make the request to the appropriate ATC facility when at least **40 NM** from Southern Illinois Airport.

VFR Traffic Advisories/Flight Following will be provided on a workload-permitting basis only and will not be available within 40 NM of Southern Illinois Airport.

Prior to start-up -- Please ensure that you have reviewed the special flight information, departure procedures, and temporary taxi procedures prior to engine start. Check ATIS on **119.725**.

- **Engine start** – Locate a marshaller to monitor engine start.
- **Run-up** – If practical, it is recommended that you conduct your run-up while in queue for departure. Please consider propeller blast during your run-up.
- **Taxi** – Follow instructions from marshaller's and **MONITOR (Do not contact)** Southern Ground on **121.8** during taxi.
- **Departure**

If departing **36R** or **18L**, contact Southern Tower on **125.35** when number one for departure and state intended direction of flight. Be prepared for immediate departure.

If departing **36L** or **18R**, contact Southern Tower on **126.25** when number one for departure and state intended direction of flight. Be prepared for immediate departure.

Departing 36L

- If direction of flight to your destination after departure will be **339° - 180° (counterclockwise)**, turn left and proceed on course as soon as practical after takeoff.
- If direction of flight to your destination after departure will be **340° - 179° (clockwise)**, fly an initial heading of **340°** until clear of the Class D airspace, then proceed on course.

Departing 36R

- If direction of flight to your destination after departure will be **021° - 180° (clockwise)**, turn right and proceed on course as soon as practical after takeoff.
- If direction of flight to your destination after departure will be **020° - 181° (counterclockwise)**, fly an initial heading of **020°** until clear of the Class D airspace, then proceed on course.

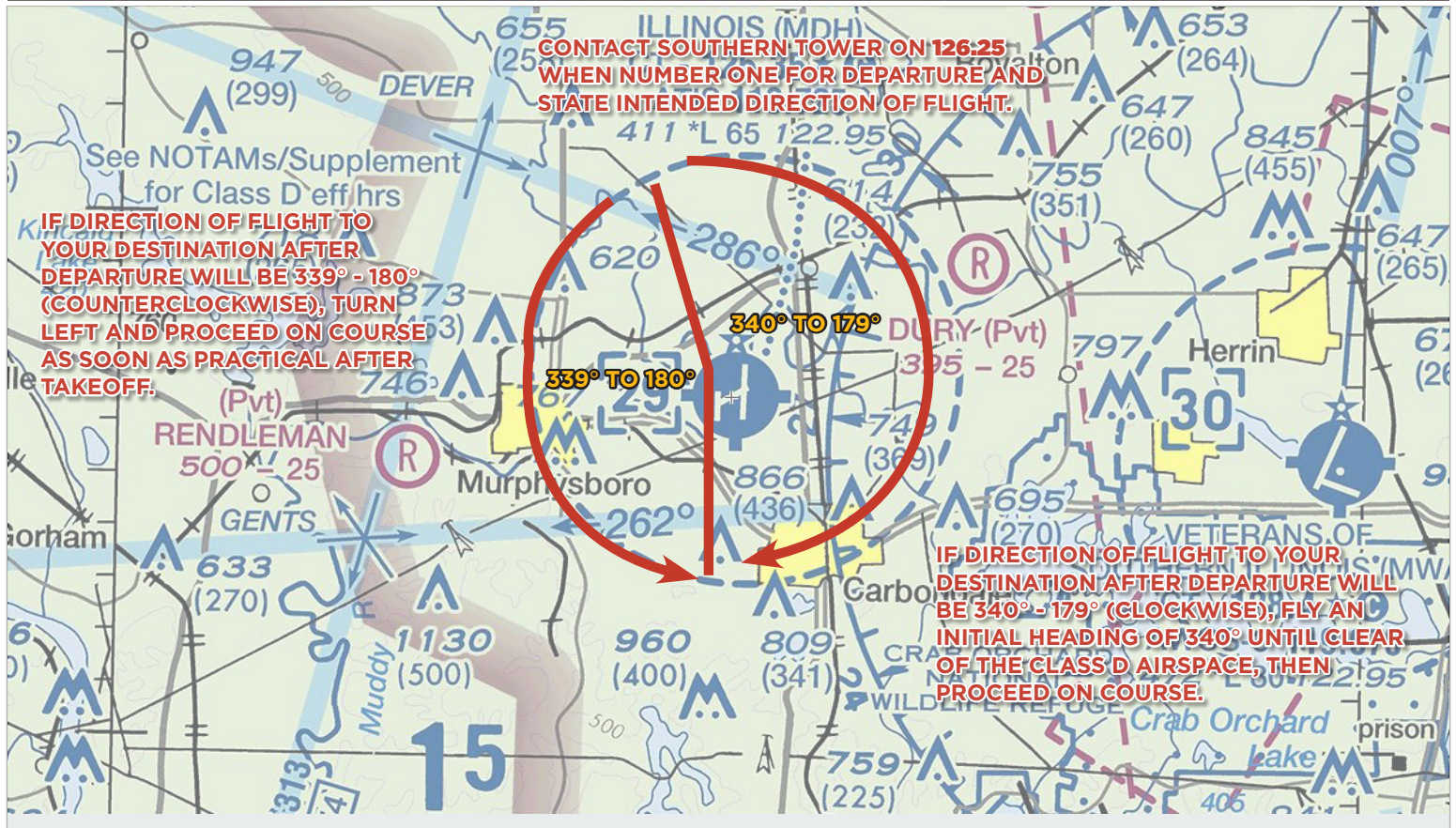
Departing 18L

- If direction of flight to your destination after departure will be **159° - 001° (counterclockwise)**, turn left and proceed on course as soon as practical after takeoff.
- If direction of flight to your destination after departure will be **160° - 360° (clockwise)**, fly an initial heading of **160°** until clear of the Class D airspace, then proceed on course.

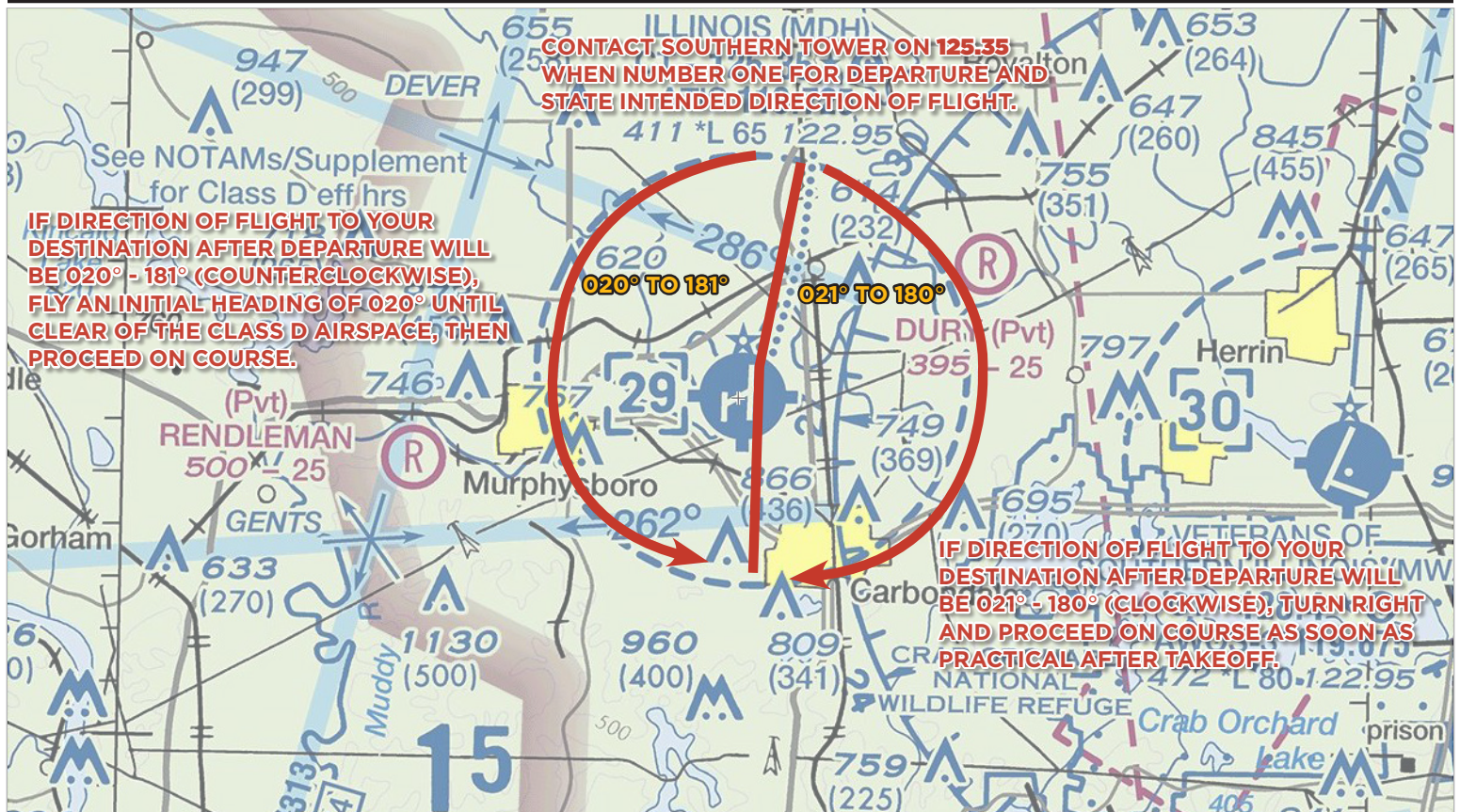
Departing 18R

- If direction of flight to your destination after departure will be **201° - 360° (clockwise)**, turn right and proceed on course as soon as practical after takeoff.
- If direction of flight to your destination after departure will be **200° - 001° (counterclockwise)**, fly an initial heading of **200°** until clear of the Class D airspace, then proceed on course.

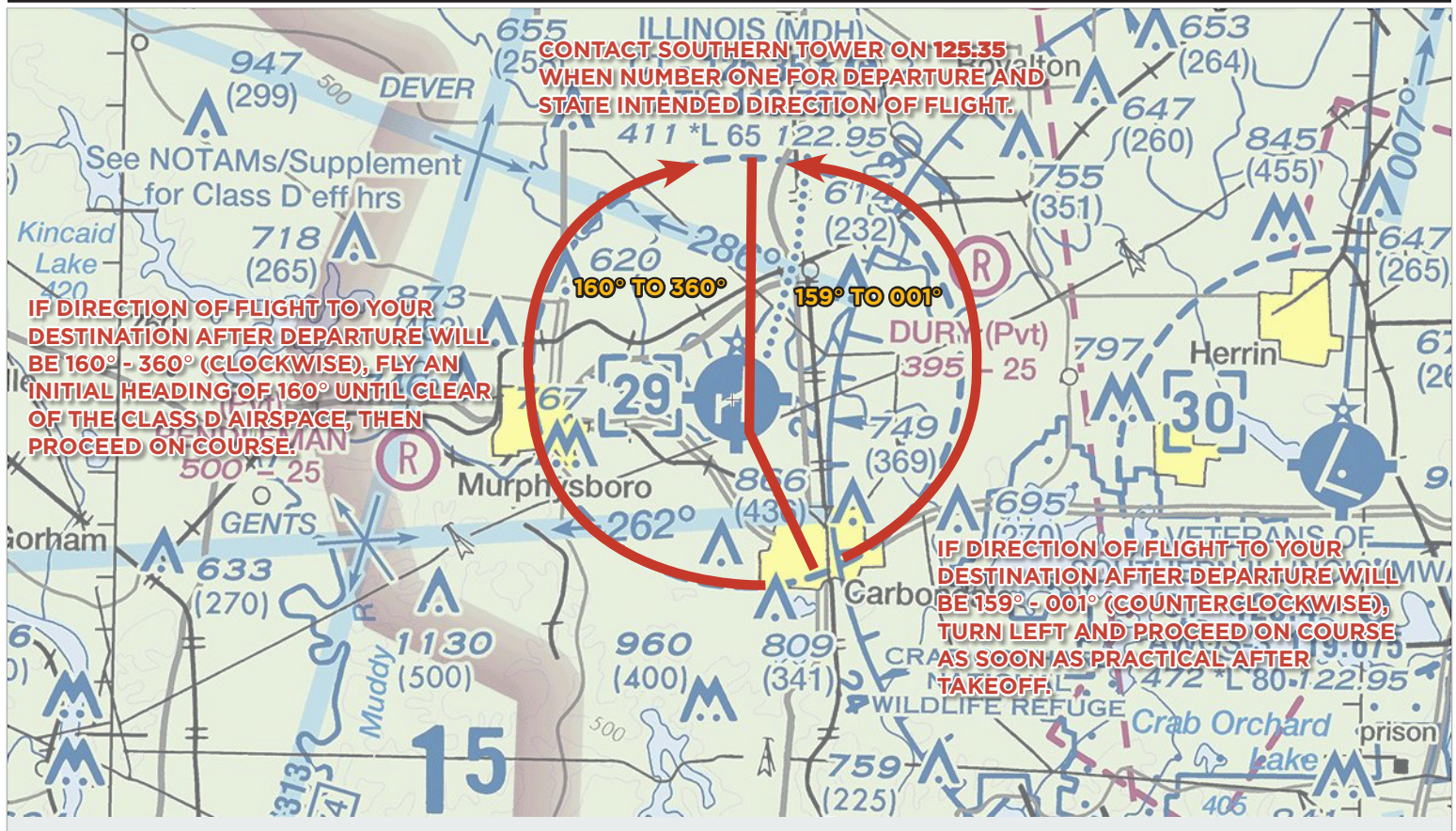
DEPARTING 36L



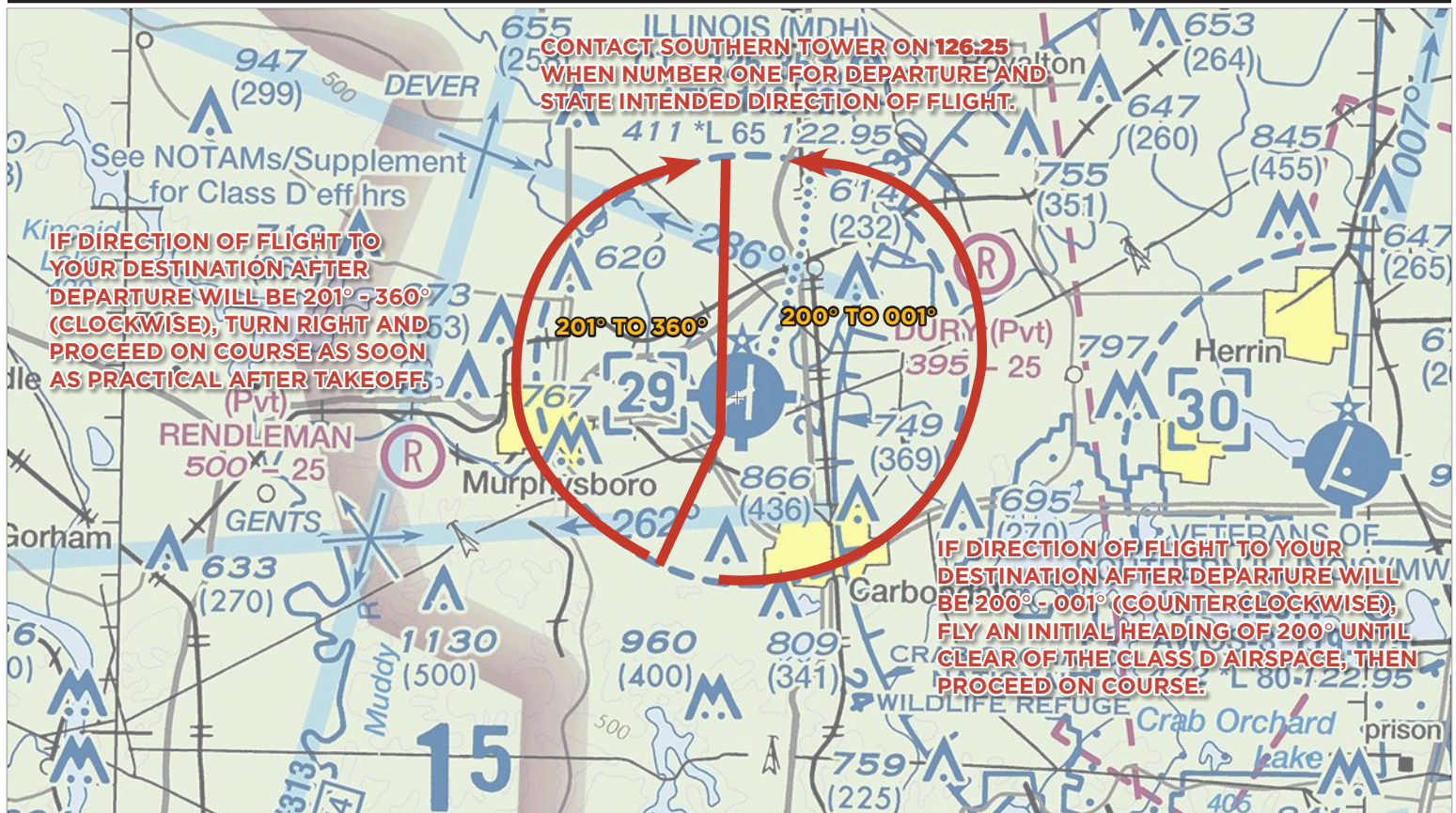
DEPARTING 36R



DEPARTING 18L



DEPARTING 18R



AIRPORT DIAGRAM

