

For Immediate Release

October 16, 2018



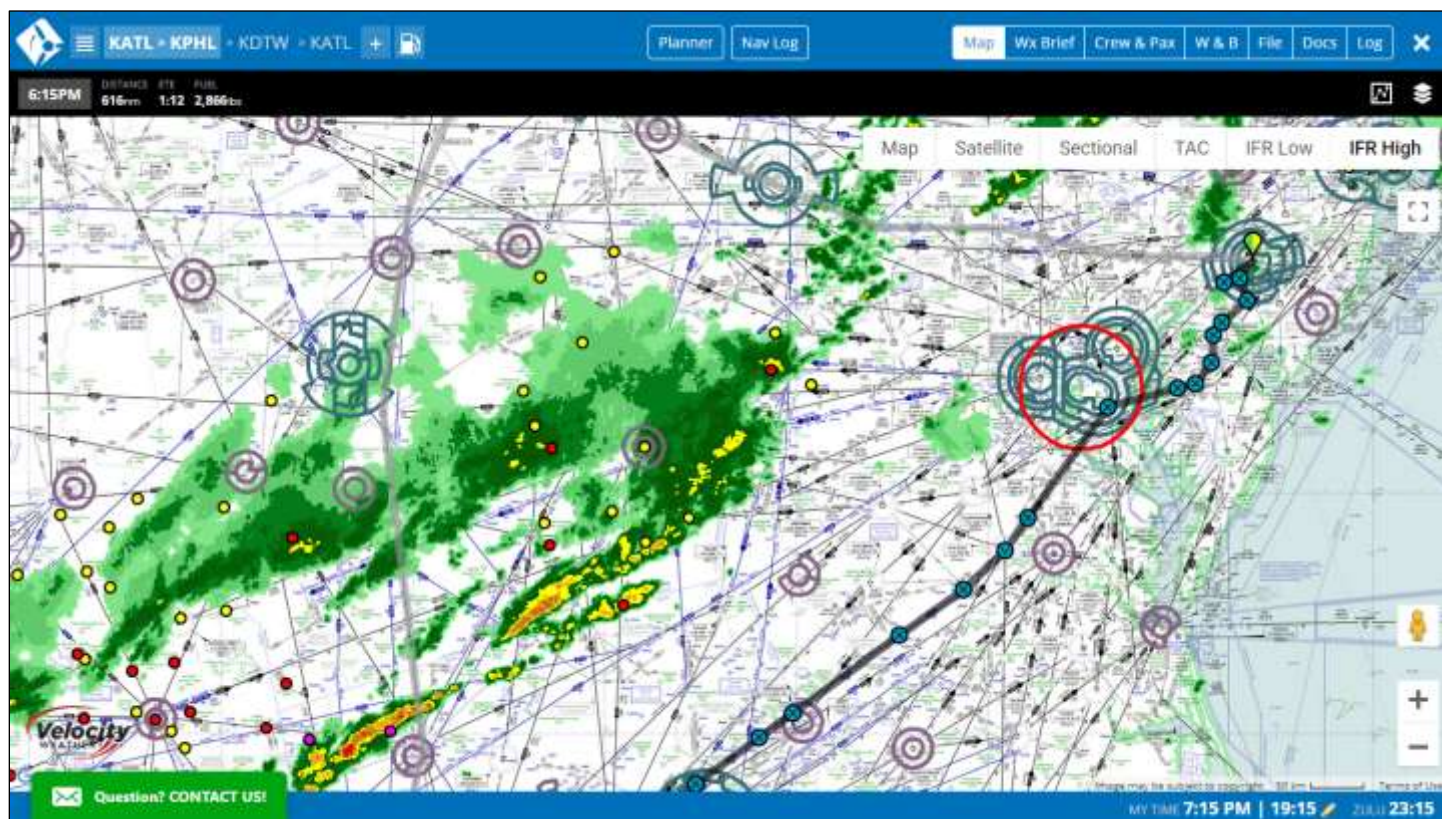
Contact: Andy Matthews

Email: contact@iflightplanner.com

iFlightPlanner Launches Multi-Leg Trip Manager, PFM Ops Console Integration

Ann Arbor, MI – iFlightPlanner announced today the release of a completely redesigned flight planning interface for its comprehensive web-based flight planning platform, giving users the ability to plan detailed, multi-leg trips from any connected device.

The all-new Trip Manager interface builds on the step-by-step Flight Wizard, ensuring every aspect of a flight, from interactive route and weather planning, the retrieval of certified weather briefs, weight & balance calculations, flight plan filing, and record keeping via digital log books, is completed in sequential, efficient steps.



Additionally, iFlightPlanner has expanded its third-party integration capabilities and is showcasing its partnership with Professional Flight Management, Inc. (PFM) at the National Business Aviation Association (NBAA) Convention & Expo this week in Orlando, FL. The expansion includes enhanced flight estimates and iFlightPlanner's newly released multi-leg flight planning functionality accessible within PFM's Ops Console, securely leveraging detailed scheduling data already in PFM to drive a comprehensive flight planning experience for flight crews, schedulers, and dispatchers.

All flight estimates and trips in PFM are now built using the estimated total distance, time, and fuel burn for non-stop flights between global airport pairs, within the range of a given aircraft model and engine type. The enhanced estimates replace the inaccurate great circle routing with real-time data and ATC routing predictions using

manufacturer aircraft performance data, and either currently forecasted winds or a proprietary winds database – all to achieve more accurate flight times and fuel requirements. Additional parameters, including departure or arrival date and time, performance profile (i.e., Long Range Cruise, Max Cruise Speed, etc.) or specific cruise speed, cruise altitude, routing (Direct, ATC Optimized, or User-Defined), cargo, and passenger weights may be sent with each request to further refine the planning.

Ultimately, this combination provides flight departments with a seamless, 2-way integration between two of the leading products in their respective fields supporting business aviation.

“We are very excited to be growing our partnership with PFM and showcasing this unique technology integration at NBAA. Our two complimentary platforms have raised the bar and will change the expectations operators have of their flight planning and management software,” said Andy Matthews, iFlightPlanner’s Co-Founder and Director of Business Development. “The way we are leveraging trip data for flight planning is simply unmatched in business aviation.”

Finally, all flight department and crew accounts, company aircraft, and flights created via the integrated flight planning platform automatically sync wirelessly with iFlightPlanner for iPad, currently available in the App Store, and available to all operators using iFlightPlanner at no additional cost.

Current iFlightPlanner users should point their browser to www.iFlightPlanner.com/My/Trips/Trip to access the all-new Trip Manager and www.iFlightPlanner.com/My/Profile/Aviation to set it as their default planning interface.

To see the iFlightPlanner integration in action with PFM, visit PFM in Booth #2687 at this week’s NBAA-BACE in Orlando, FL. Operators not attending NBAA-BACE may also email contact@iflightplanner.com or sales@pfmsys.com to schedule a full demonstration.

#

About iFlightPlanner, LLC

iFlightPlanner, LLC (www.iFlightPlanner.com) based in Ann Arbor, Michigan, offers a comprehensive flight planning solution for private pilots and corporate operators that can be accessed from any computer or iPad. Built on a foundation of safety, usability, and flight planning efficiency, **iFlightPlanner.com** and **iFlightPlanner for iPad** feature wireless, 2-way sync capabilities to ensure pilots have access to everything they need to confidently make sound flying decisions from any device. With continued feedback from the aviation community, iFlightPlanner’s integrated approach to flight planning has made it the premier cloud-based flight planning solution for pilots.

About Professional Flight Management, Inc. (PFM)

Professional Flight Management, Inc. (www.pfmsys.com) is a privately held aviation solutions company that delivers hosted operations management systems to support corporate, private, and government flight departments. PFM’s technologies connect crews, passengers, corporate offices, and vendors with the flight department to ensure reliable and secure processes supporting global operations. Its systems are developed and maintained in-house and include 24/7 customer support, training, and customization to meet each customer’s unique requirements. For more information about PFM and its services, please contact sales@pfmsys.com.