

# NATIONAL BUSINESS AVIATION ASSOCIATION (NBAA) CONVENTION

**ORLANDO, FLORIDA**  
**October 16 – 18, 2018**

## SPECIAL AIR TRAFFIC PROCEDURES

Special air traffic procedures to manage increased traffic, enhance safety, and minimize delays are in effect for the following airports:

AIRPORT	IDENTIFIER
Orlando International	MCO
Executive	ORL
Orlando Sanford International	SFB
Kissimmee Gateway	ISM

Pilots should review all applicable NOTAMS and arrival/departure procedures prior to conducting flight in the Orlando area. Be aware of Kennedy Space Center activities and Special Use Airspace in the central Florida area. Penetration of this airspace without authorization could be extremely hazardous.

## NBAA CONVENTION SITE

Executive Airport (ORL) will host the 2018 National Business Aviation Association (NBAA) Convention static display of aircraft. The **airport** will be open 24 hours a day

## AIR TRAFFIC CONTROL TOWER HOURS OF OPERATION

FACILITY	HOURS	AFTER HOURS
MCO	24 hours	
ORL	0700–2200 EDT (1100–0200 UTC)	Clearance/IFR release available from Orlando APCH on 119.77. CTAF is 118.7
SFB	0630–2300 EDT (1030–0300 UTC)	Clearance/IFR release available from Orlando APCH on 121.35. CTAF is 120.3
ISM	0700–2200 EDT (1100–0200 UTC)	Clearance/IFR release available from Orlando APCH on 119.95. CTAF is 124.45

## TRAFFIC MANAGEMENT INITIATIVES

Traffic management procedures will be used as needed to evenly distribute traffic to/from the Orlando area. Pilots should anticipate Expect Departure Clearance Times (EDCT), holding, or other potential delay.

Aircraft landing ORL, ISM, and SFB, should expect early descent to de-conflict with MCO arrivals.

MCO arrivals filed over PIGLT/BUGGZ may be rerouted over LAL/COSTR.

Aircraft issued an EDCT are expected to depart within 5 minutes of the assigned time. Aircraft unable to depart within 5 minutes of their EDCT shall advise ATC and request a new EDCT assignment.

**FLIGHT PLANS**

ATC will not accept air-filed flight plans or airborne changes of destination within 100 miles of ORL except in emergencies.

Do NOT depart VFR and expect IFR pick-up within 100 miles of ORL, except in an emergency.

When filing flight plans remember the location identifier for Executive is “ORL”, while the identifier for Orlando International is “MCO”.

File flight plans at least **6 hours** prior to proposed departure time.

Do NOT file duplicate flight plans (same aircraft different destination/route/altitude).

**FLIGHT TRAINING/VFR FLIGHT FOLLOWING**

Practice instrument approaches will be unavailable at ORL and ISM airports October 14–19. Student training flights within the Orlando area, including solo cross country flights, low approaches, and practice instrument approaches, are highly discouraged during this time period. Flight training at other airports within Orlando Approach airspace will be available as workload permits.

VFR departures requesting service beyond Orlando Approach Control should file a VFR flight plan to their destination. Pilots requesting Class B service will obtain advisories and service only within Orlando Approach airspace.

**IFR ARRIVAL ROUTES  
ORL and ISM**

File via the following routes. ATC will reroute aircraft not filed as requested. **Expect an early descent.**

**TURBO JETS**

OVER/VICINITY OF	ROUTE
SZW	SZW J41 PIE COSTR (STAR)
OTK/AMG/TAY	GNV OCF V537 CERMO direct

**TURBOPROPS/PROPS**

OVER/VICINITY OF	ROUTE
SZW	SZW CTY OCF V537 CERMO direct
AMG/TAY	TAY GNV OCF V537 CERMO direct

Aircraft over Ormond Beach VORTAC (OMN), Atlantic Routes, and from the south will be routed normally.

**VFR ARRIVAL PROCEDURES**

VFR aircraft not being provided advisories should contact Orlando Approach between 30 and 40 miles from the Orlando VORTAC for advisories and Class B clearance. Remember, the issuance of a transponder code

is NOT clearance to enter Class B airspace. All aircraft must wait for RADAR identification and specific clearance from ATC before entering Class B airspace.

During periods of heavy traffic aircraft may be instructed to hold outside of ORL Class D airspace. Pilots should use extreme caution as other aircraft may be doing the same. Aircraft without an operating two-way radio and Mode 3/A transponder with Mode C will not be authorized to operate within ORL Class D airspace.

VFR aircraft inbound to ISM should contact ISM Tower at least 10 miles from the airfield for inbound information. Do NOT enter ISM Class D airspace unless you have established communication with the tower. Advise the tower of your aircraft type, call sign, and direction and distance from the airport.

## AFTER TOUCHDOWN

### MCO ARRIVALS

When aircraft is west of Runway 18R/36L, look for a 'follow-me' truck to assist in parking. If a follow-me truck is not in sight, ensure that you taxi well clear of the runway in case other aircraft are trying to exit the runway. The area west of Runway 18R/36L is considered a non-movement area.

Taxiway Alpha (A) is a taxi lane that extends north and south of Taxiway "J". Use caution for other aircraft and vehicles as you exit the runway.

### ORL ARRIVALS

After clearing Runway 07/25, you will be instructed to contact Ground Control on frequency 121.4. Do not stop unless giving way to other aircraft or vehicles. Advise Ground of your destination. Aircraft parking at Atlantic should expect to taxi on the parallel taxiway (Taxiway A) and turn northwest-bound on Runway 31, then turn north-east bound on Taxiway E-5 to the Atlantic Ramp. Aircraft parking at Sheltair should expect to taxi on the parallel taxiway (Taxiway A), turn northwest on Runway 31, and then turn left on Taxiway F to the Sheltair ramp. When advised by ATC, change to the appropriate ramp frequency and proceed to parking.

Taxiways B, B-1, E-5, E-6, F, K and G, and RWY31 (north of E-4) will be designated non-movement areas from 0700 EST Saturday, October 13 through 2200 EST Thursday, October 18.

## FLIGHT DEMONSTRATION ROUTES

Flight demonstration routes have been developed to accommodate participants' needs and provide the safest, most expeditious service for everyone involved. The coded routes below are **only available for NBAA demonstration flights**. File a flight plan via the route listed under the Code that you want to fly. Do not ask Flight Service for these routes by Code name when filing. Include the route Code in the remarks section of your flight plan.

### Code: NBAA 1

(ORL/ISM) **DEARY MLB OMN090050/D0+30 APOLO AR6 ORL (ORL/ISM)**

Preferred route for high performance aircraft demonstrations requesting altitudes at/above 10,000 FT and requesting to depart the Orlando Area to climb quickly into a high altitude block. Unforeseen military activity may restrict the use of this route.

**Code: NBAA 2**(ORL/ISM) **DEARY TRV PBI VKZ PHK (STAR)** (ORL/ISM)

Suggested for round robin flight at or above FL180.

**Code: NBAA 3**(ORL/ISM) **DEARY TRV (STAR)** (ORL/ISM)

Suggested for round robin flight at or below 16,000 FT.

**Code: NBAA 4**(ORL/ISM) **KLMAN LAL LBV (STAR)** (ORL/ISM)

Only available during inclement weather and after coordination with Miami Center Traffic Management.

**Code: NBAA 5**(ORL/ISM) **CTY SZW TAY GNV OCF V537 CERMO** (ORL/ISM)

Suggested for requested altitudes at/below FL230.

**Code: NBAA 6**(ORL/ISM) **CRG SAV TAY GNV OCF V537 CERMO** (ORL/ISM)

Suggested for requested altitudes at/above FL240.

**IFR DEPARTURES**

To expedite departure, all aircraft capable of overwater flight should file via the following routes, then via the preferred route/STAR to destination:

**Destinations at/east of a line from RDU to SYR** (includes New York, Washington, Philadelphia, and Boston metro areas)

MLB LENDS AR16 ILM  
 MLB ETECK AR18 DIW  
 MLB ETECK AR18 LANIE M201  
 MLB ETECK M202  
 MLB LENDS M203

**Destinations at/west of a line from MSY to MCI** (includes Dallas/Fort Worth, Houston, and points west)

CAMDT KNOT REMIS Q100 REDFN Q105 HRV  
 CAMDT KNOT REMIS Q100 LEV

Traffic departing MCO file via Standard Instrument Departures (SID's).

During excessive delay periods due to weather or heavy demand, aircraft northbound via V267/J53 may potentially expedite departure by filing tower enroute at/below 11000 FT. Pilots should not expect higher altitude until as far north as SAV. Do NOT file duplicate flight plans.

Do not request IFR clearance prior to thirty (30) minutes before your Estimated Time of Departure (ETD). Aircraft departing ISM should not request IFR clearances more than 15 minutes before Estimated Time of Departure. IFR clearances should be requested on the following frequencies:

ORL	128.45
MCO	134.70
SFB	121.35
ISM	121.7

**ORL DEPARTURE PROCEDURE**

Effective October 18, 2018 1400–2200 EST

Advise the Fixed Base Operator (FBO) as soon as possible of your departure date and time.

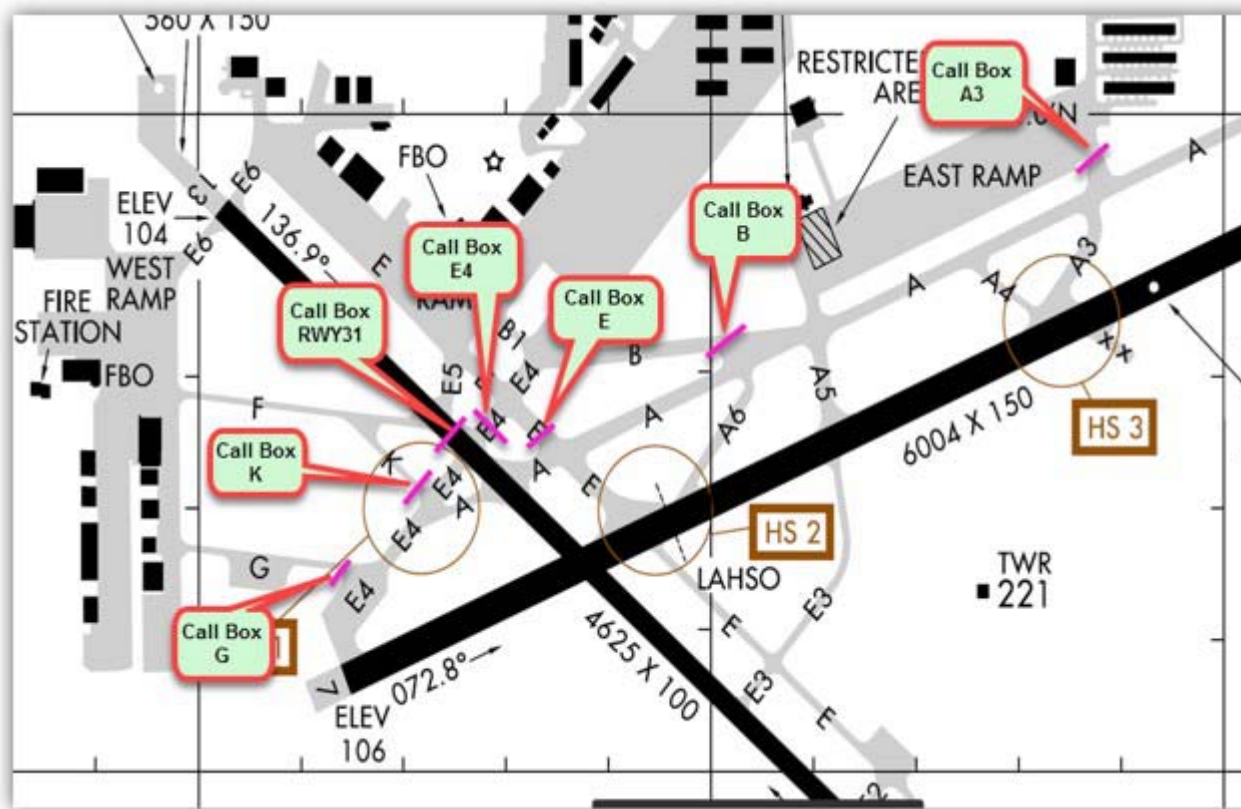
Monitor ATIS frequency 127.25, then contact Clearance Delivery (CD) on 128.45 (no earlier than 30 minutes before your proposed departure time).

When ready, taxi to position your aircraft at the nearest NBAA Call Box (see graphic). When number 1 at the NBAA Call Box, contact Ground Control on 121.4. Aircraft with Expect Departure Clearance Time (EDCT) should be ready to taxi at least 20 minutes prior to wheels up time.

Aircraft should be ready for departure upon reaching the runway.

IFR aircraft should expect clearance to maintain an altitude of 1500 FT and expect filed altitude 10 minutes after departure due.

Taxiways B, B-1, E-5, E-6, F, K and G, and RWY31 (north of E-4), Taxiways E (north of A) and E-4 east of RWY31) will be classified as non-movement areas.



**MCO DEPARTURE PROCEDURE**

Advise the FBO as soon as possible of your departure date and time to avoid delays due to parking/taxi restrictions.

Monitor ATIS, then contact Clearance Delivery on frequency 134.7 (no earlier than 30 minutes prior to your proposed departure time).

After receiving your clearance and **prior to engine start**, contact Gate Hold (if required by Departure ATIS/120.525), or contact Ground Control for taxi. When MCO is on a south operation (Runways 18R/18L), aircraft will be staged for departure on the northeast corner of the west ramp. **DO NOT** proceed to the runway until instructed to do so by Ground Control.

Aircraft should be ready for departure upon reaching the runway.

**ISM DEPARTURE PROCEDURE**

Advise the FBO as soon as possible of your departure date and time to avoid delays due to parking/taxi restrictions.

Monitor AWOS frequency 128.775.

Contact Clearance Delivery on frequency 121.7 (if no response, try 119.95.)

Contact Ground on frequency 121.7 for taxi.

VFR aircraft do not call for taxi until you are the number one aircraft leaving the ramp area.

IFR aircraft do not taxi until you have received your clearance.

Aircraft should be ready for departure upon reaching the runway.

Contact ISM Tower on frequency 124.45. (If no response, IFR aircraft try frequency 119.95.)

Do not call the tower for departure until you are the number one aircraft in the hold short.

Aircraft may be held on the ramp as needed to facilitate sequencing, expedite departures, and comply with flow restrictions.

**SFB DEPARTURE PROCEDURE**

Normal departure procedures will be in effect.

**ORLANDO AREA FREQUENCIES**

ORL ATIS	127.25
ORL Ground Control	121.4
ORL Clearance Delivery	128.45 (119.77 when tower closed)
ORL Tower	118.7
ORL Helicopter Advisory	123.025
PIE AFSS	123.65

MCO ATIS	Arrival 121.25 / Departure 120.525
MCO Ground Control	121.8 west / 126.4 east
MCO Clearance Delivery	134.7
MCO Tower 18LR/36LR	124.3
MCO Tower 17RL/35RL	118.45
SFB ATIS	125.975
SFB Ground Control	121.35
SFB Clearance Delivery	123.975 (121.35 when tower closed)
SFB Tower 9L/27R	120.3
SFB Tower 9R/27L	135.25
ISM ATIS	128.775
ISM Clearance Delivery	121.7 (119.95 when tower closed)
ISM Ground Control	121.7
ISM Tower	124.45

**FIXED BASE OPERATOR (FBO)/SERVICES****ORL**

<i>Atlantic</i>	(407) 894-7331
FAX	(407) 894-5094
Unicom	122.95
ASRI	131.275
Location	North side of airport
Website	<a href="http://www.atlanticaviation.com">www.atlanticaviation.com</a>

<i>Sheltair</i>	(407) 896-2799
FAX	(407) 581-5652
ASRI	131.6
Location	West Ramp
Website	<a href="http://www.sheltairaviation.com">www.sheltairaviation.com</a>

**MCO**

<i>Signature Flight Support</i>	(407) 825-6999
FAX	(407) 856-5598
Unicom	122.95
ARINC	130.375
Location	West Ramp
Website	<a href="http://www.signatureflight.com/location?iata=MCO">www.signatureflight.com/location?iata=MCO</a>

<i>Atlantic Aviation of Orlando</i>	(407) 851-8304
FAX	(407) 855-9588
ARINC	130.9
Location	West Ramp
Website	<a href="http://www.atlanticaviation.com">www.atlanticaviation.com</a>

<i>Textron Aviation Service Center</i>	(407) 859-1245
FAX	(407) 240-0572
ARINC	123.22
Location	West Ramp, North end
Website	<a href="http://www.txtav.com/en/service-locator">www.txtav.com/en/service-locator</a>

**ISM**

<i>Signature Flight Support</i>	(407) 846-6128
FAX	(407) 846-0382
ARINC	122.775
Unicom	122.95
Website	<a href="http://www.signatureflight.com">www.signatureflight.com</a>

<i>Odyssey Aviation Kissimmee</i>	(407) 846-8001
FAX	(407) 846-2080
ARINC	128.9
Website	<a href="http://www.odysseyaviation.com">www.odysseyaviation.com</a>

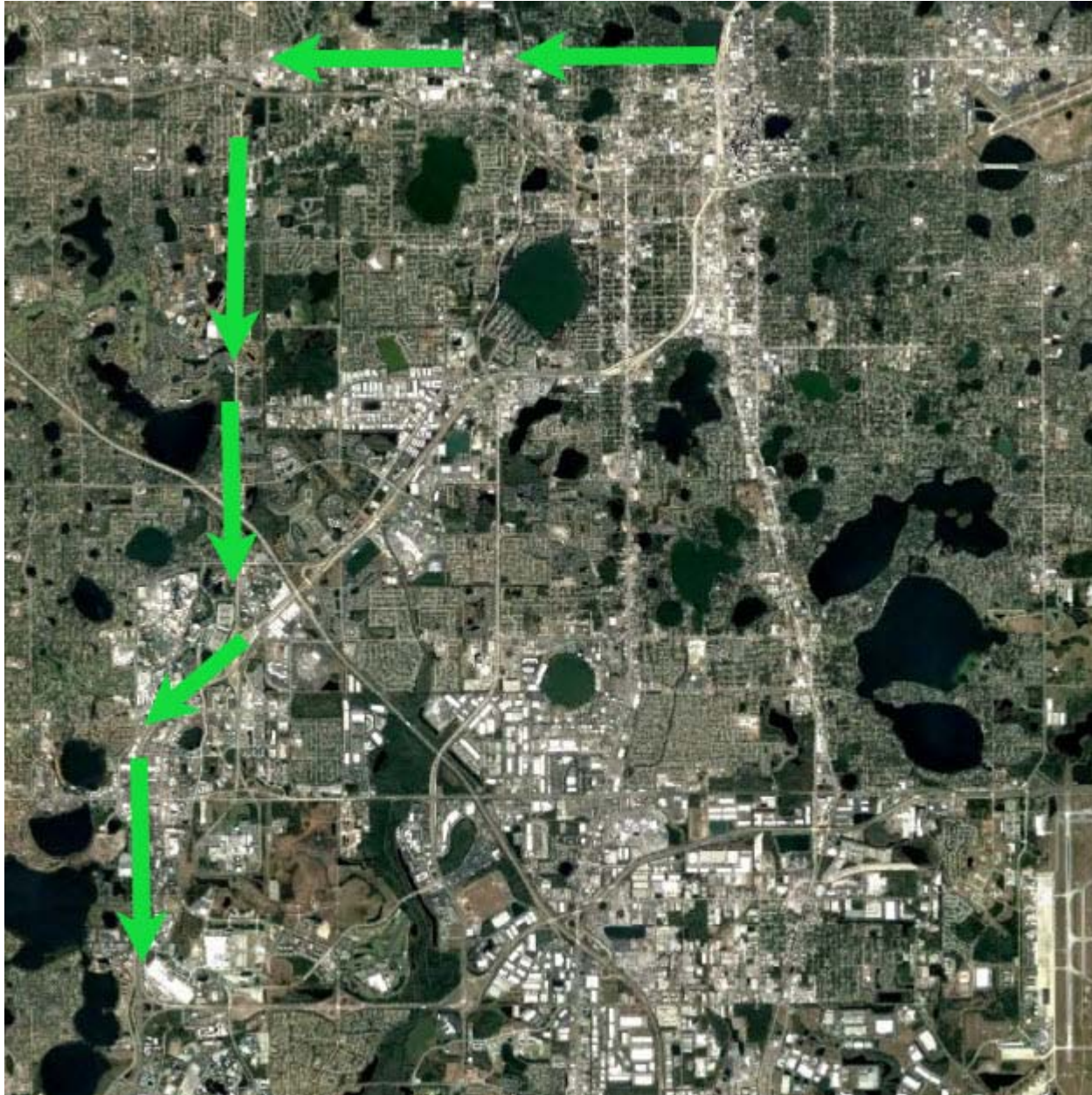
<i>Kissimmee Jet Center</i>	(407) 847-9095 (888) 735-1145
FAX	(407) 933-0607
Unicom	122.875

**NBAA VFR HELICOPTER ROUTES**

**DEPARTURE – ORL TO THE CONVENTION CENTER**

Departure from the terminal ramp will be **AT YOUR OWN RISK, USING EXTREME CAUTION FOR VEHICLES, PEDESTRIANS, AND AIRCRAFT**. Helicopters should fly at or below 600 feet on the right side of the roads mentioned in this route. Proceed westbound on the major road just north of the airport (SR 50 or Colonial Drive). Fly on the right side of the road until you reach Kirkman Road (SR 535, or ORL287/007) and turn southbound remaining on the right side of the route. Change to Helicopter Advisory (123.025) and advise entering the helicopter route from the north, and again when you are inbound for landing at the Convention Center. Continue flying southbound until reaching Interstate Four (I-4), then follow I-4 to the Convention Center.

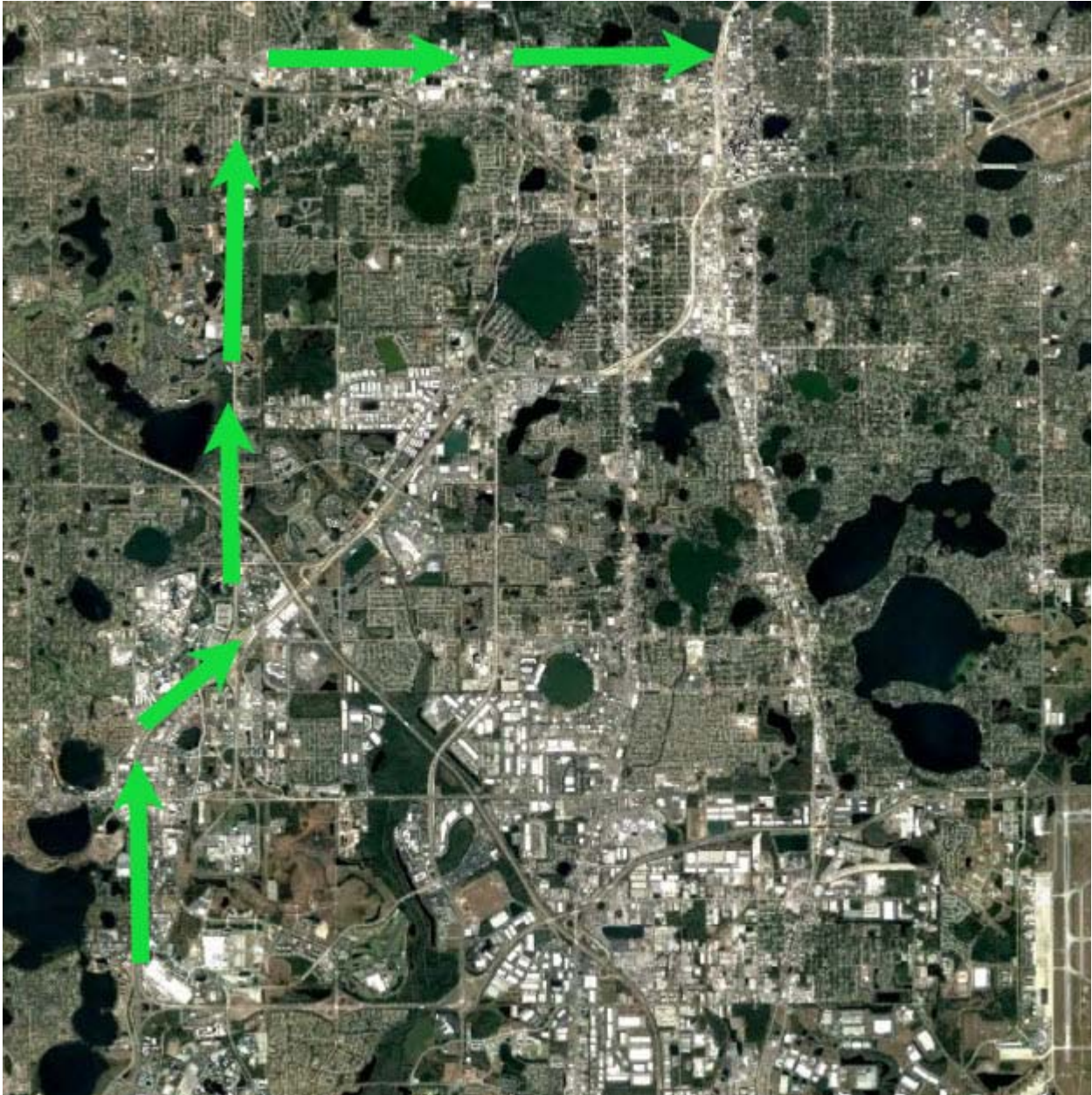


**ARRIVAL – CONVENTION CENTER TO ORL**

Fly the same route described above (right side of the route at or below 600 feet) making advisories on 123.025 when departing the Convention Center, and while navigating northbound on 14 and SR 535.

Contact ORL Tower on frequency 118.7 stating, “(A/C call sign) inbound on HWY 50 with (current ATIS Code).” Landing at the Terminal ramp will be **AT YOUR OWN RISK, USING EXTREME CAUTION FOR VEHICLES, PEDESTRIANS, AND AIRCRAFT.**





### LEIDOS FLIGHT SERVICE

Pilot briefing and flight planning services are available online through the Leidos Pilot Portal at <https://www.1800wxbrief.com/Website/> or by telephone at 1-800-WX-BRIEF (1-800-992-7433).

Contact St Petersburg Radio on 122.2 for VFR flight plan activation and closure in the Orlando area.

*\*Remember to close your flight plan\**