

# **AOPA FLY-IN**

## **FREDERICK MUNICIPAL AIRPORT**

### **FREDERICK, MD**

**May 9–11, 2019**

#### **SPECIAL AIR TRAFFIC PROCEDURES**

Special air traffic procedures are in effect for aircraft operating to/from the Frederick Municipal Airport (FDK) during the following dates/times:

<b>DATE</b>	<b>DAY</b>	<b>TIME (EDT)</b>	<b>TIME (UTC)</b>
May 09	Thursday	1200–2015	1600–0015
May 10	Friday	0600–1900	1000–2300
May 11	Saturday	0600–1900	1000–2200

**Caution:** Remain clear of: Prohibited Area P40 (15NM N FDK), Restricted Area R-4009 (overlies P-40), and Washington DC Special Flight Rules Area (7NM SE FDK). Remain clear of Hagerstown (HGR) and Martinsburg (MRB) Class D Airspace unless specifically authorized by ATC to enter.

Procedures are subject to change. Review all applicable NOTAMs and arrival/departure procedures prior to flying to FDK. Check NOTAMs frequently to ensure you have the most current information.

#### **DC SPECIAL FLIGHT RULES AREA**

Pilots must comply with 14 CFR §91.161 – Special awareness training required for pilots flying under visual flight rules within a 60–nautical mile radius of the Washington, DC VOR/DME. The DC SFRA course is available at: [https://www.faa.gov/safety/programs\\_initiatives/flight\\_rules/flight\\_rules\\_course](https://www.faa.gov/safety/programs_initiatives/flight_rules/flight_rules_course). After completing the course, print a copy of your certificate of training.

#### **FLIGHT PLANNING/IFR PICK UP**

ATC will not accept air–filed flight plans or issue airborne IFR clearance within 30 NM of FDK except an emergency.

File flight plans at least **6 hours** prior to proposed departure time.

Be prepared for potentially lengthy delays during peak arrival and departure times.

Heavy arrival traffic expected 0800–1100 EDT (1200–1500 UTC) Friday and Saturday.

Heavy departure traffic expected 1500–1800 EDT (1900–2200 UTC) Saturday.

Consider arriving/departing during off–peak hours.

#### **IFR ARRIVALS/TRAFFIC MANAGEMENT**

Traffic Management Initiatives including, but not limited to, reroutes, miles–in–trail, altitude restrictions, ground stops, and ground delay programs may be required due to airport demand/weather condition. Be prepared for potential holding.

Expect clearance for ILS or LOC RWY23 or RNAV (GPS) RWY05.

VFR flight via VFR arrival procedures is highly recommended, if possible.

### **VFR FLIGHT FOLLOWING**

VFR Traffic Advisories/Flight Following are available as workload permits. Advisories will not be available for **departing** aircraft within 30 NM of FDK.

### **FLIGHT TRAINING/STUDENT PILOTS**

Local traffic pattern training, low approaches, and practice instrument approaches are not available at FDK during the AOPA Fly-In. Solo student pilot operations are highly discouraged.

### **NO RADIO (NORDO) AIRCRAFT**

Due to high-density traffic, no radio aircraft operations are not authorized

### **HELICOPTER OPERATIONS**

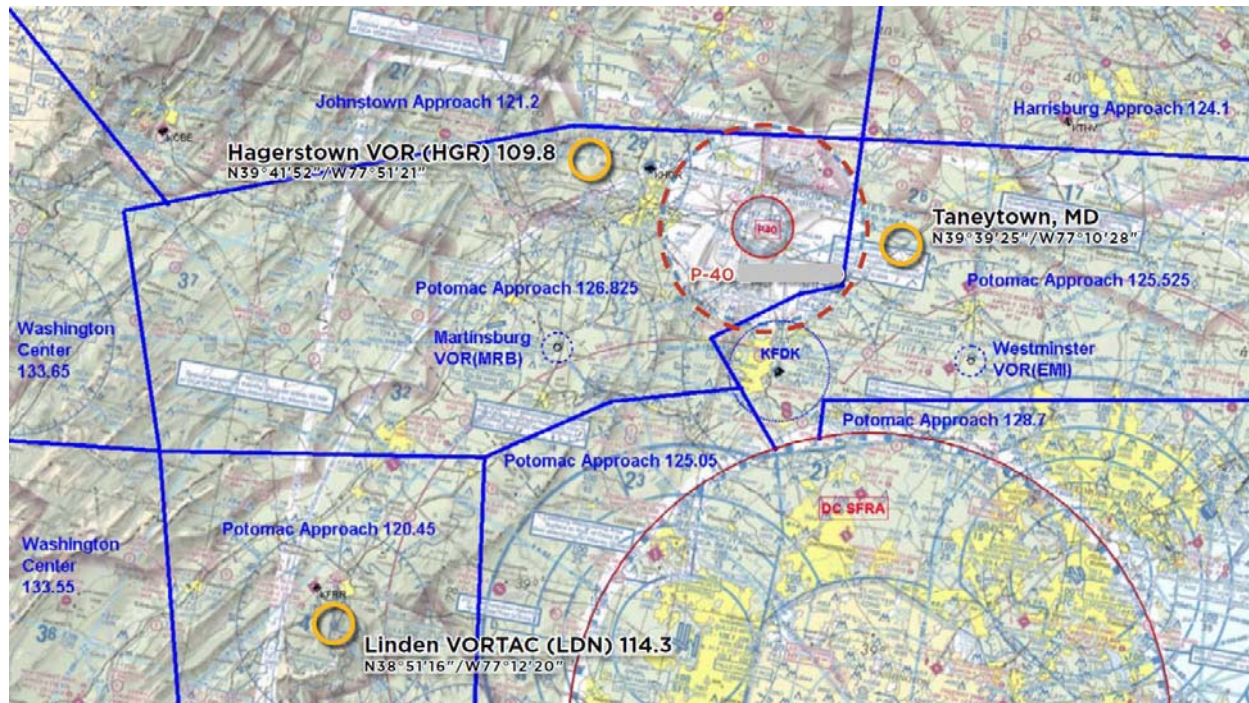
Helicopters are not expected to fly the special VFR Arrival Procedures. When inbound, contact Frederick Tower on 132.4 as soon as practical for specific instructions.

### **FREQUENCIES**

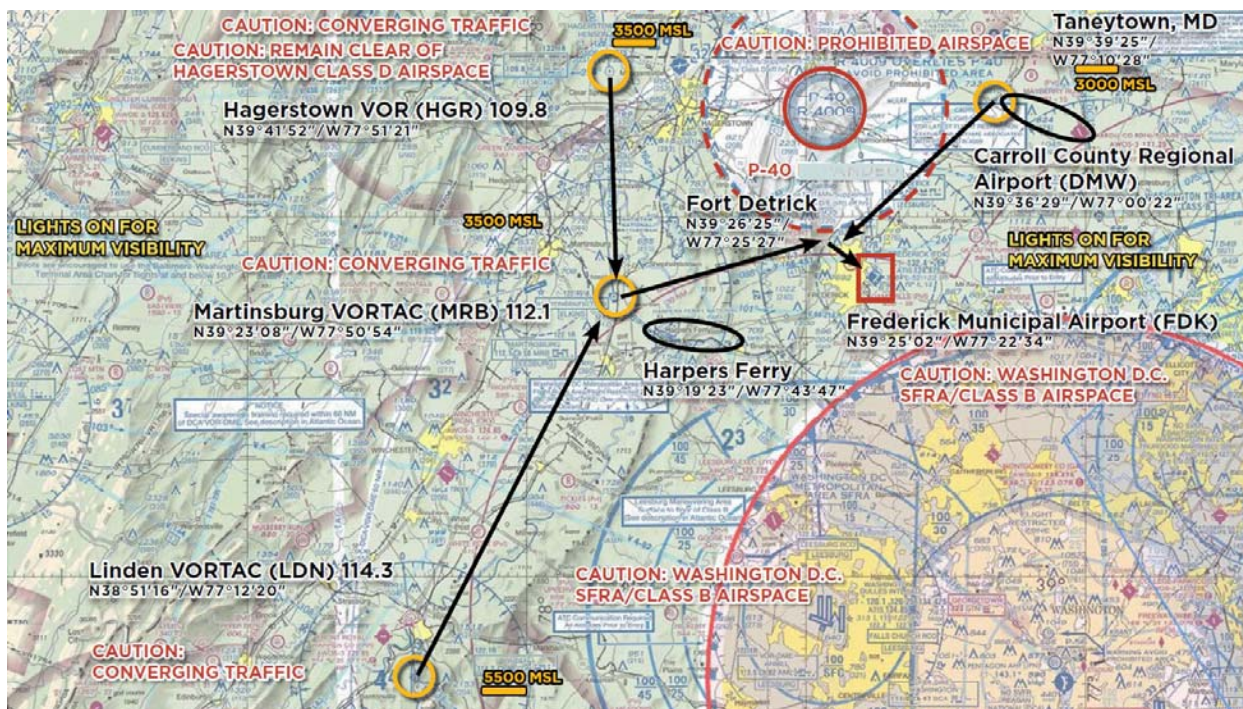
<b>FDK FREQUENCIES</b>	
ATIS	124.875
ATIS Telephone	301-600-1457
Tower	132.4
Ground	121.975
Clearance Delivery	121.975
Potomac Approach/Departure NE	125.525
Potomac Approach/Departure W	126.82
Signature Flight Support (Fuel)	130.275

<b>ENROUTE FREQUENCIES</b>	
Washington Center – West	133.65
Washington Center – West	133.55
Potomac Approach – Southwest	120.45
Potomac Approach – Southwest	125.05
Potomac Approach – Southeast	128.7
Potomac Approach – West	126.825
Potomac Approach – East	125.525
Johnstown Approach – Northwest	121.2
Harrisburg Approach– Northeast	124.1

See graphic for facility position in reference to FDK



## VFR ARRIVAL PROCEDURES OVERVIEW



You are strongly encouraged to obtain flight following from the appropriate ATC facility well before starting VFR Arrival Procedures. (See frequency graphic)

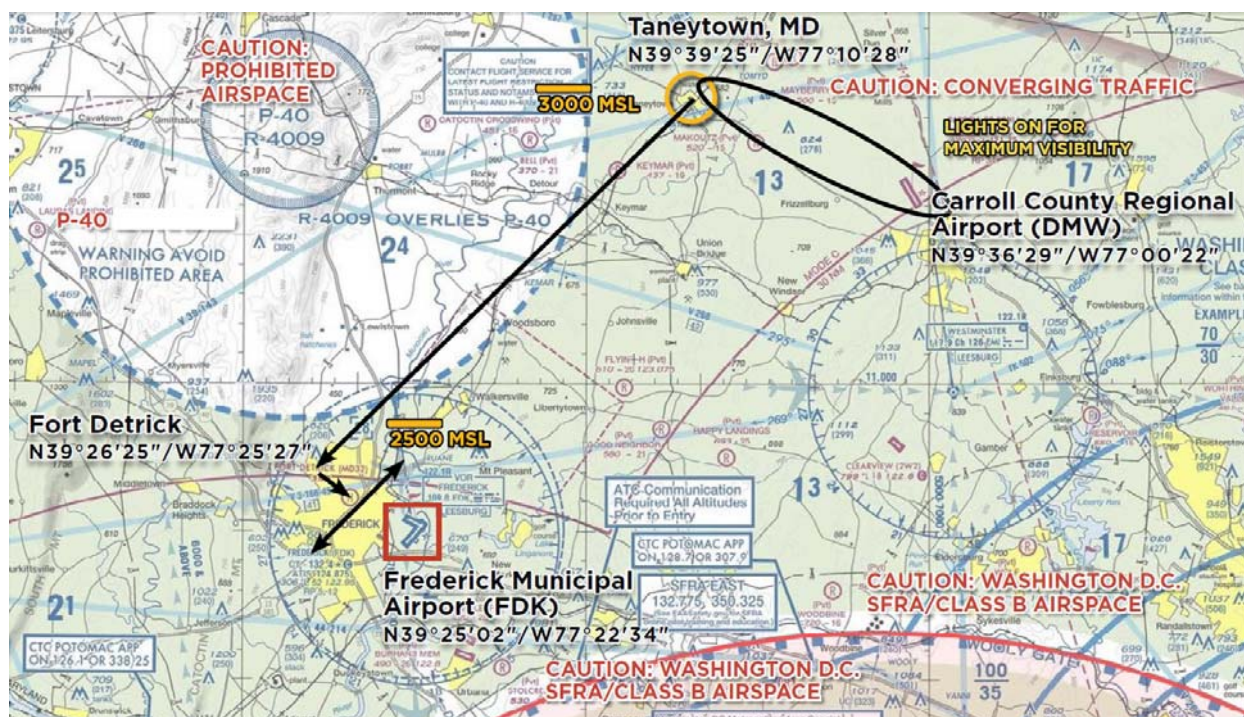
Check FDK ATIS as soon as practical.



## COORDINATE

LOCATION	COORDINATES
Taneytown, MD	393925N0771028W
Carroll County Regional/Jack B Poage Field Airport (DMW)	393629N0770022W
Fort Detrick	392625N0772527W
Frederick Municipal Airport (FDK)	392502N0772234W
Hagerstown VOR (HGR)	394152N0775121W
Linden VORTAC (LDN)	385116N0771220W
Martinsburg VOR (MRB)	392308N0775054W
Harpers Ferry	391923N0774347W

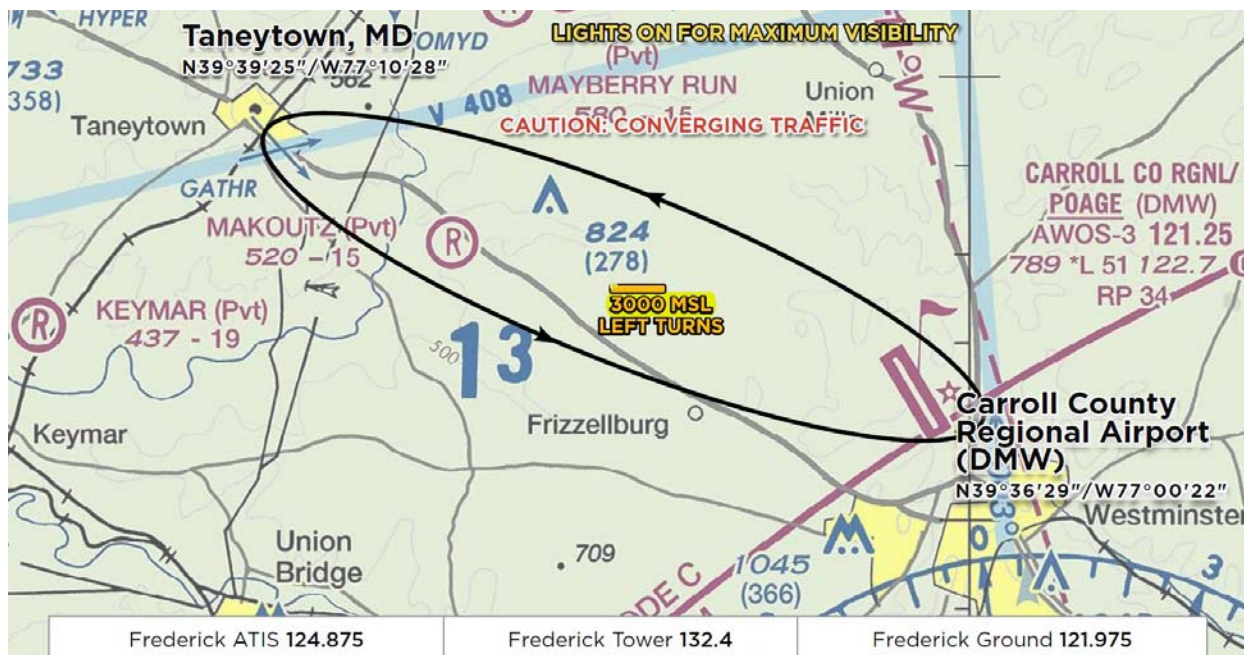
## ARRIVALS OVER TANEYTOWN



This procedure begins over Taneytown, MD at or below 3000 FT MSL. From Taneytown, MD, proceed direct to Fort Detrick, descend at pilot's discretion to at or below 2500 FT MSL.

If traffic volume requires holding, ATC will instruct you to fly the hold procedure depicted in the Taneytown VFR hold graphic. Fly left turns at or below 3000 FT MSL







If instructed to hold, fly the hold procedure as depicted in the Harpers Ferry VFR hold graphic. Fly left turns at or below 2500 feet MSL.

### ARRIVALS OVER LINDEN VORTAC (LDN)

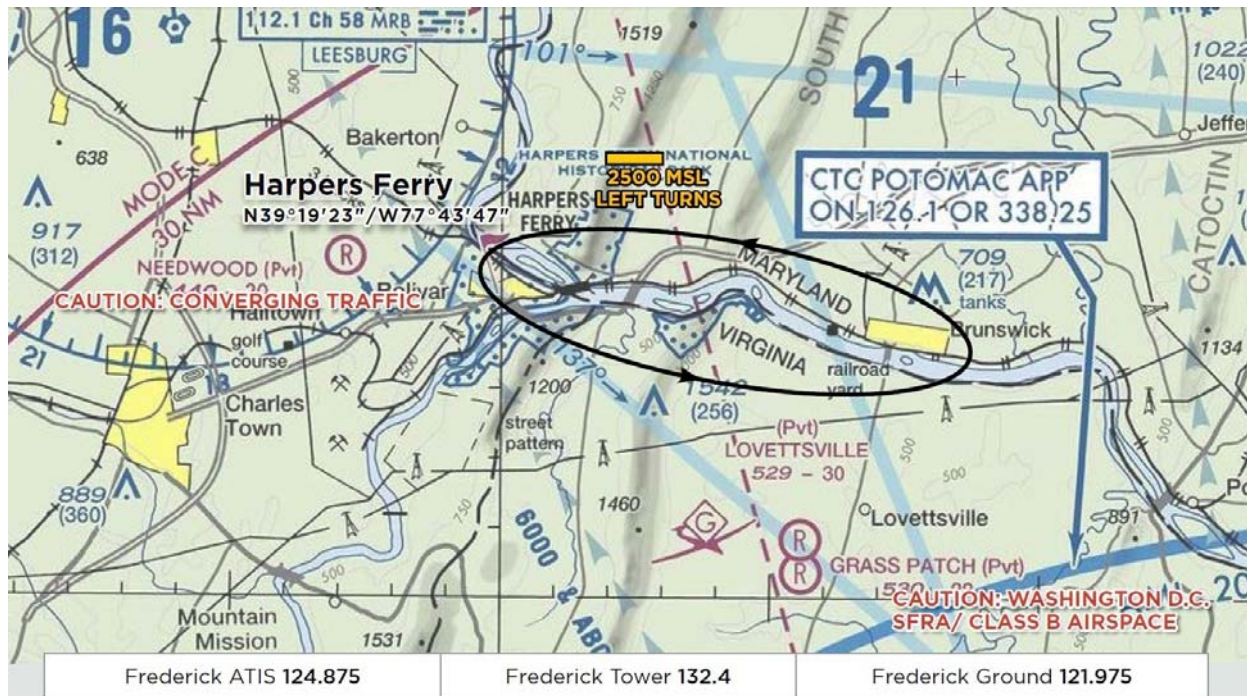


This procedure begins over the Linden VORTAC (LDN) 114.3 at or above 5500 feet MSL. From LDN proceed direct to the Martinsburg VORTAC (MRB) 112.1 and descend at pilot's discretion to 3500 feet MSL.

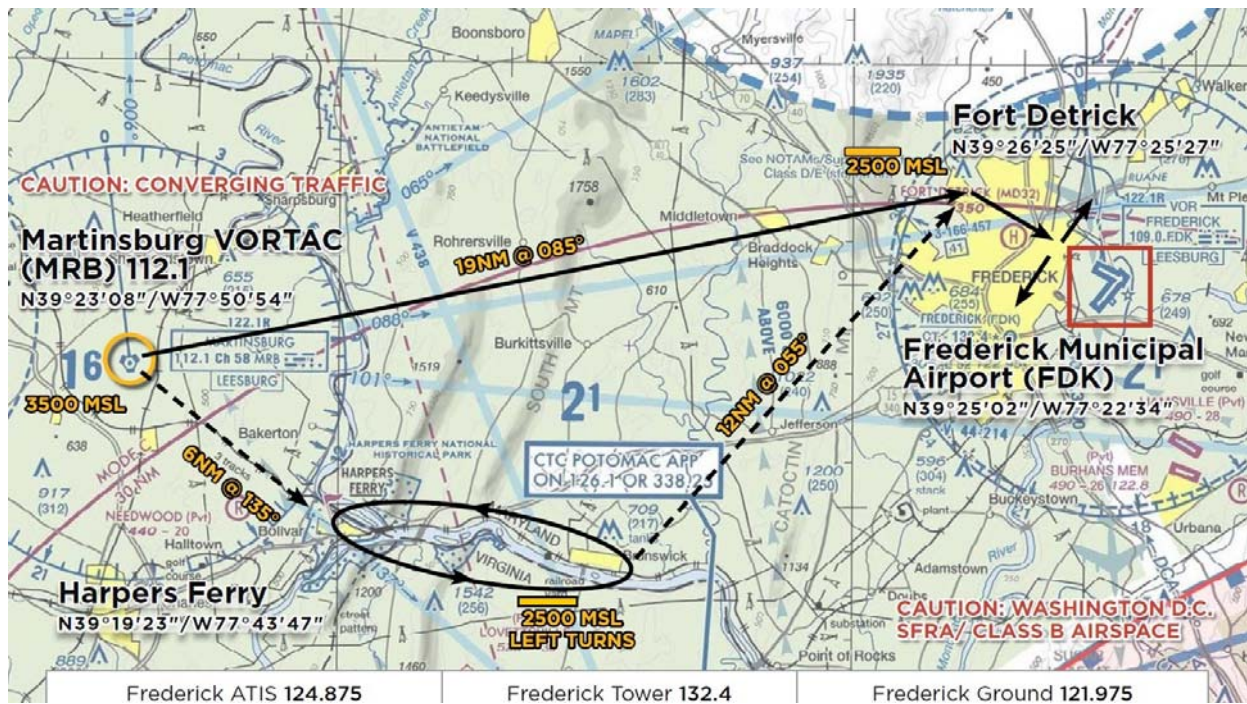
Prior to reaching the MRB, you will be instructed by ATC to either continue inbound from MRB toward Fort Detrick and descend at pilot's discretion to at or below 2500 FT MSL, or to proceed to Harpers Ferry for the Harpers Ferry VFR Hold



## HARPERS FERRY HOLDING PROCEDURE



Fly left turns at or below 2500 FT MSL.



When ATC advises holding is no longer required, depart holding over the Brunswick Railroad Yard and proceed inbound toward Fort Detrick. Expect radar service termination prior to reaching Fort Detrick. ATC will instruct you to contact Frederick Tower on 132.4.



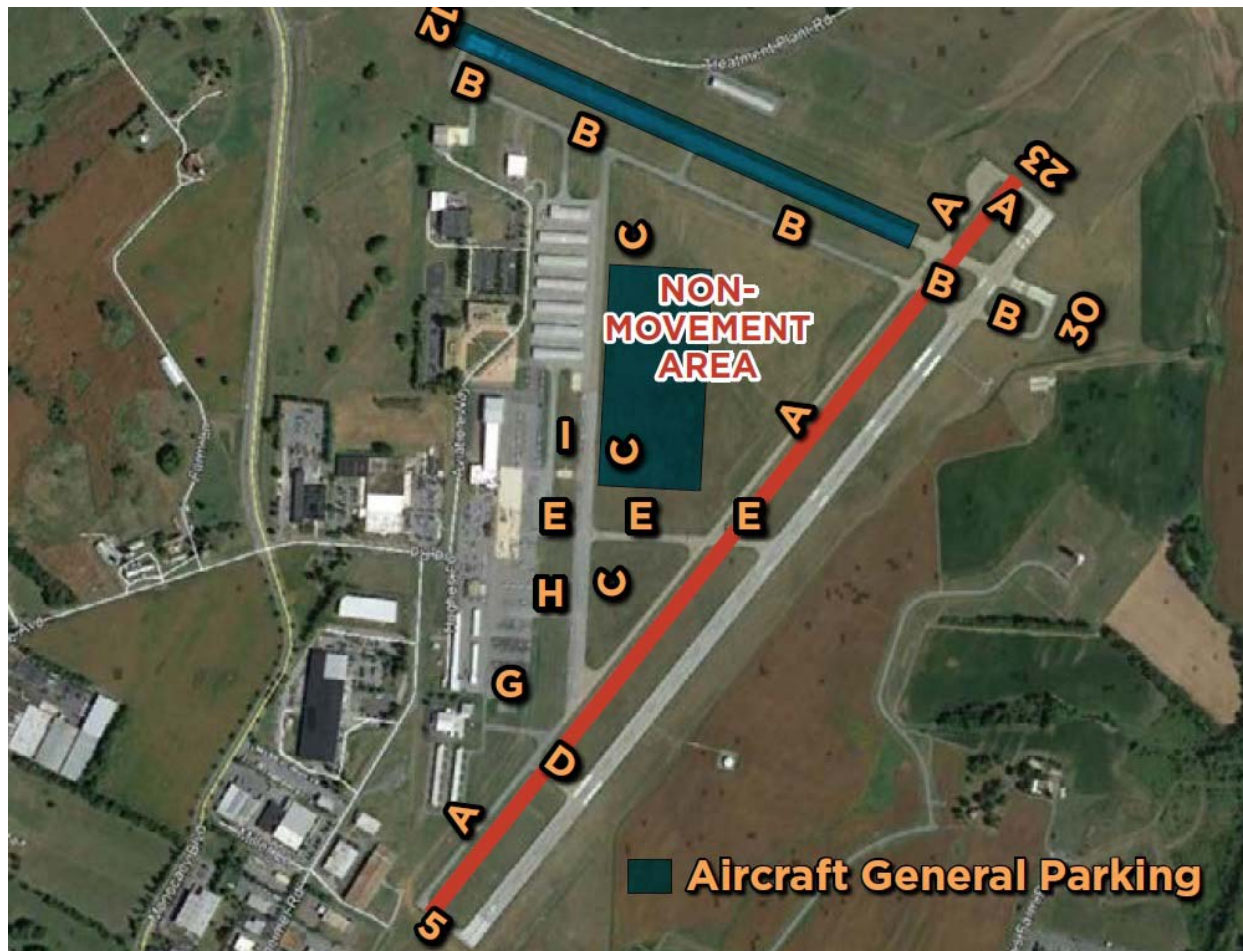
From Fort Detrick, fly direct to FDK. Expect to enter a midfield downwind for RWY23 or RWY05.

Follow instructions from Frederick Tower on 132.4 and descend at pilot's discretion to traffic pattern altitude.

FDK Traffic Pattern Altitude: 1300 FT MSL light aircraft; 1800 FT MSL multiengine/turbine aircraft

After landing, do not stop on the runway unless necessary. Exit the runway as quickly and as safely as possible at the first available taxiway. Continue forward far enough to ensure you do not block subsequent arrivals. Follow instructions from Frederick Tower and **monitor** Frederick Ground on 121.975. Marshalls will guide you to a parking space after you enter the non-movement/aircraft parking area.

### FDK AIRPORT INFORMATION



### AIRPORT CLOSURE

FDK will be closed:

2015 EDT (0015 UTC) Thursday, May 9 until 0600 EDT (1000 UTC) Friday, May 10

1900 EDT (2300 UTC) Friday, May 10 until 0600 EDT (1000 UTC) Saturday, May 11

1200 EDT (1600 UTC) Saturday, May 11 until 1315 EDT (1715 UTC) Saturday, May 11

Arrivals and departures will be stopped for the duration of STOL Demonstration, D-Day Squadron Flyover, and Parachute Drop activities. Please plan accordingly



### **RUNWAY CLOSURE**

Expect RWY 12/30 to be closed for parking during the AOPA Fly-In.

### **NON-MOVEMENT AREAS**

All areas west of Runway 5/23 are non-movement areas.

### **PARKING**

Early arrivals (prior to 1200 EDT/1600 UTC Thursday, May 9) may not park in AOPA attendee parking.

Aircraft parking is at designated transient spaces managed by the FBOs.

Overnight fees apply.

Marshallers will assist aircraft to and from parking and run-up areas.

When operating in the parking areas, be extra alert for taxiing aircraft, aircraft with engine(s) running, and vehicle/pedestrian traffic.

High RPM engine running is prohibited in designated parking areas.

Departures should conduct their run-up procedures in queue, if practical.

Please review the parking map prior to landing and departing.

### **CHOCKS/TIE DOWNS**

Chocks are required, but not provided. Tie down hooks are limited and parking on a tie-down space is very unlikely. Please bring your own chocks, tie-downs, and anchors to secure your aircraft.

### **AIRCRAFT SERVICE**

We will take fuel/oil orders as soon as you park your aircraft. Please make your request at that time, as later orders may delay your departure. We request credit card information with your order. Receipts will be emailed (if requested) or available in the FBO. The order slip will be attached to your propeller. If you are uncomfortable providing credit card information on the ramp, you may provide the information directly to the FBO front desk.

If you need service after airport operating hours, please contact the after-hours Line Service number for the FBO that serviced you. An after-hours callout is subject to an additional fee.

### **VEHICULAR TRAFFIC**

No vehicles allowed on ramps (except vehicles owned by airport operator and tenants).

### **AIRCRAFT CAMPING**

Aircraft camping is permitted from 1200 EDT (1600 UTC) Thursday, May 9 until 1200 EDT (1600 UTC) Sunday, May 12. You may not camp prior to Thursday, May 9.

All campers must pre-pay and pre-register.

Space is limited and available on a first-come, first-served basis.

If you plan to camp, you must RSVP ahead of time. You will receive a confirmation with additional information.

Food is not provided on the airfield. Please bring your own food and water. Sunscreen and rain gear is highly recommended.

Restroom and shower facilities are “primitive”. Porta-potties and hand washing stations are provided. Limited shower facilities may be available, but not assured. No guarantee on hot water. Please come prepared! Ground transportation is not provided to offsite locations. You must make taxi or rental car reservations on your own.

Campers should prominently display the letter C in their aircraft windshield.

See the AOPA website for more information.

## DEPARTURE PROCEDURES

### IFR DEPARTURES

Place large printed IFR letters in aircraft windshield.

Follow marshalls instructions to taxi to the nearest designated IFR departure holding area.

Contact Frederick Ground on 121.975 for clearance.

Expect initial clearance direct to MRB or EMI, depending on your route of flight.

**Note:** ATC will not issue airborne IFR clearances within 30 NM of FDK, except in an emergency.

### VFR DEPARTURES

**Prior to start-up:** make sure you have reviewed the special flight information, departure procedures, and taxi procedures. Check ATIS on 124.875.

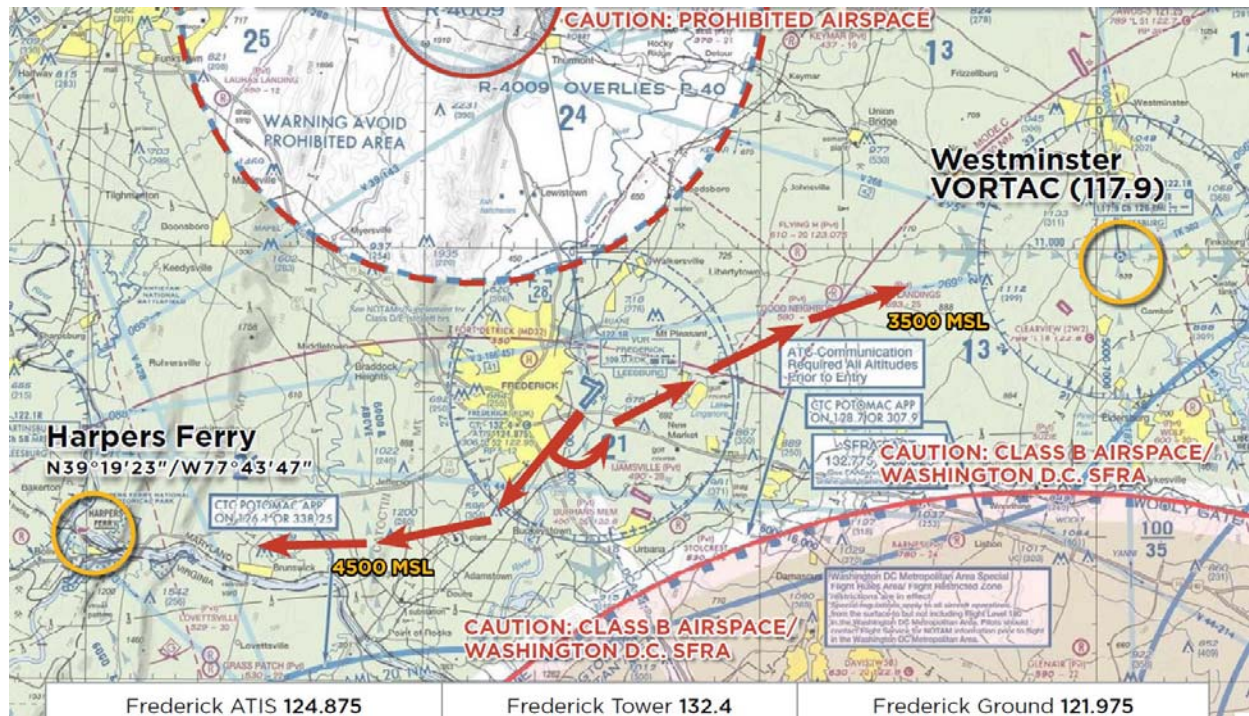
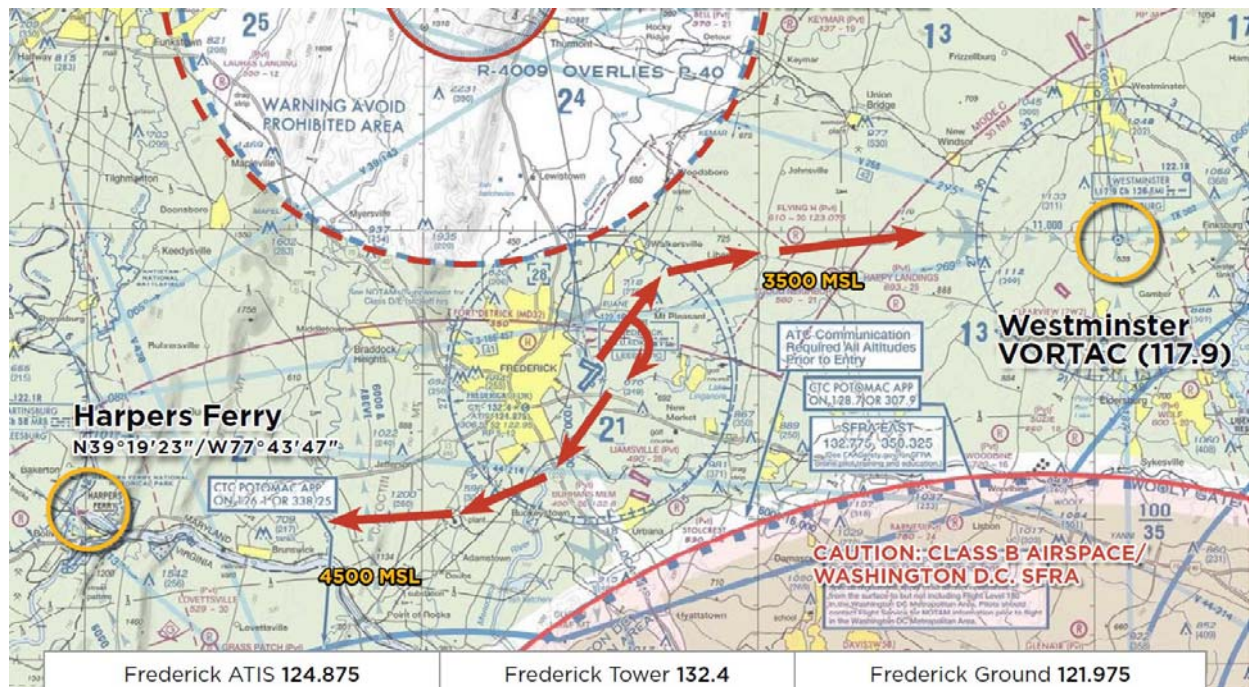
**Engine start/run-up:** if practical, conduct your run-up while in queue for departure. Please consider your propeller blast during run-up.

**Taxi:** Follow instructions from marshalls, and monitor Frederick Ground on 121.975.

**Departure:** Contact Frederick Tower on 132.4 when number one for departure. State ATIS code and direction of departure. Depending on destination, expect to depart westbound (4500 MSL) toward Harpers Ferry, WV or northeast bound (3500 MSL) toward the Westminster VORTAC (EMI) 117.9 before proceeding on course. When clear of FDK Class D Airspace, change frequency at pilot’s discretion. There is no need to contact tower for frequency change if you are clear of the Class D.

**Caution:** Remain clear of the Washington DC Special Flight Rules Area and Prohibited Area P-40.





AIRCRAFT WINDOW CARDS



Print & place graphic in aircraft windshield upon arrival





Print & place graphic in aircraft windshield if departing IFR