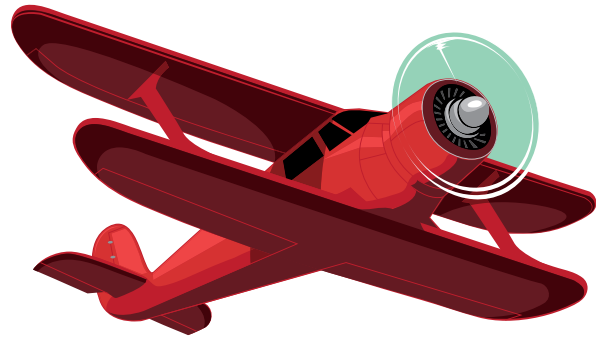




# FLY-IN



SEPTEMBER 13-14, 2019

**TULLAHOMA REGIONAL AIRPORT  
(THA) TULLAHOMA, TN**

---

# NOTAM

## SPECIAL FLIGHT PROCEDURES

---

**EFFECTIVE:**

Thursday	Sept 12, 2019	12:00 NOON	CDT	until	6:30 PM CDT
Friday	Sept 13, 2019	6:30 AM	CDT	until	6:00 PM CDT
Saturday	Sept 14, 2019	6:30 AM	CDT	until	6:00 PM CDT

---



## IMPORTANT INFORMATION

---



### PLEASE NOTE NOTAM EFFECTIVE TIMES

12:00 Noon CDT until 6:30 PM CDT Thursday, September 12, 2019

6:30 AM CDT until 6:00 PM CDT Friday, September 13, 2019

6:30 AM CDT until 6:00 PM CDT Saturday, September 14, 2019

### AIRPORT CLOSED TO FIXED-WING AIRCRAFT DURING THE FOLLOWING TIMES

6:30 PM CDT Thursday, September 12, 2019 to 6:30 AM CDT Friday, September 13, 2019

6:00 PM CDT Friday, September 13, 2019 to 6:30 AM CDT Saturday, September 14, 2019

12:00 Noon CDT to 1:30 PM CDT Saturday, September 14, 2019

### RUNWAY CLOSURE

Runway **18/36** is expected to be closed for aircraft parking from 12:00 Noon CDT Thursday, September 12, 2019 until 6:00 PM CDT Saturday, September 14, 2019.

**CHOCKS, TIE DOWNS, AND/OR TOWBARS ARE REQUIRED AND NOT PROVIDED. PLEASE BRING YOUR OWN.**

**EARLY ARRIVALS (PRIOR TO THURSDAY, SEPTEMBER 12, 2019 - 12:00 NOON CDT) WILL NOT BE ACCOMMODATED IN THE AOPA ATTENDEE PARKING**

---

- Camping will **NOT** be permitted prior to Thursday, September 12, 2019.
- Aircraft parking will be at designated transient spaces managed by the FBO.
- Overnight fees may apply.

### AIRCRAFT CAMPING

---

- All campers must pre-pay and pre-register. Camping availability not assured without reservation.
- Please bring your own food and water. Food is **NOT** provided on the airfield.
- Ground transportation is **NOT** provided to get to locations offsite. Taxi or rental car reservations must be made on your own.
- Food, Water, Sunscreen, and Rain gear is highly recommended.
- Restroom and shower facilities are "primitive". Portable toilets and handwashing stations will be provided. Limited shower facilities might be available but not assured. No guarantee on hot water. Please come prepared!
- Aircraft camping is open from 12:00 Noon CDT Thursday, September 12, 2019 until 12:00 Noon CDT Sunday, September 15, 2019.

# TABLE OF CONTENTS

---

## NOTAM—TEMPORARY VFR PROCEDURES .....1-15

Graphic—Enroute Frequency Overview .....	4
Graphic—VFR Arrivals Overview—sectional view .....	5
Temporary VFR Procedures.....	5
Tullahoma Airport Advisory.....	5
VFR Procedures: Arrivals over Warren County Airport (RNC).....	6
Graphic—VFR Arrivals over Warren Country Airport (RNC)—sectional view .....	6
Graphic—I-24 VFR Hold—sectional view .....	7
Graphic—I-24 VFR Hold—satellite view .....	7
Graphic—Love’s Truck Stop on I-24—satellite view .....	8
Graphic –Semi Cloverleaf at Beechgrove on I-24—satellite view .....	8
VFR Procedures: Arrivals over Ellington Airport (LUG)—sectional.....	9
Graphic—VFR Arrivals over Ellington Airport (LUG)—sectional .....	9
Graphic—Route 16 VFR Hold—sectional view .....	10
Graphic—Route 16 VFR Hold—satellite view .....	10
Graphic—Junkyard on Route 16—satellite view .....	11
Graphic—Shelbyville Ballfields on Route 16—satellite view.....	11
Graphic—Arriving from Shelbyville Municipal Airport (NW)—satellite view .....	12
Graphic—Landing Runway 24 at THA—satellite view .....	12
Graphic—Landing Runway 6 at THA—satellite view .....	13
Graphic—Landing Runway 27 at THA—satellite view .....	13
Graphic—Landing Runway 9 at THA—satellite view .....	14
IFR Arrivals/IFR Delays.....	15
Airport Closures .....	15
Runway Closure.....	15
Helicopter Operations.....	15
Local Training and Practice Approaches.....	15
No Radio Aircraft .....	15
Student Pilots.....	15
Cautions.....	15

## FREQUENCIES & WAYPOINT INFORMATION .....16

Enroute frequencies.....	16
Tullahoma Regional Airport Frequencies.....	16
Specific Latitude/Longitude Coordinates .....	16

## GENERAL INFORMATION: TULLAHOMA REGIONAL AIRPORT ..... 17

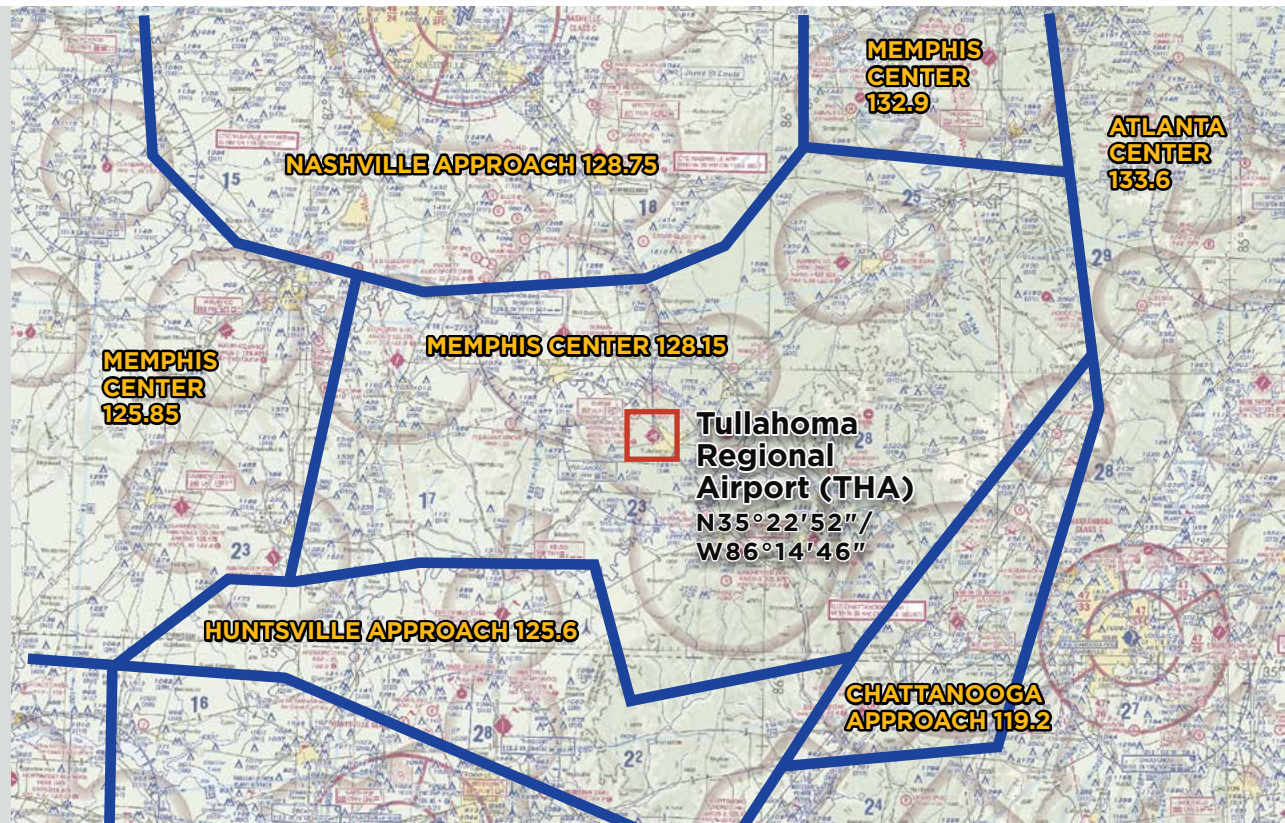
Graphic—Tullahoma Regional Airport—satellite view.....	17
Non-movement Areas.....	17
Parking Areas .....	17
Vehicular Traffic.....	17
Preflight Planning .....	17
Parking and Service Details .....	17
Chocks and Tie Downs.....	17
Camping .....	17

## DEPARTURE PROCEDURES: TULLAHOMA REGIONAL AIRPORT .....18-19

IFR Departures.....	18
VFR Departures .....	18
VFR Flight Following.....	18
Prior to Start-up .....	18
Engine Start/Run-up .....	18
Taxi.....	18
Monitor Ground .....	18
Departure .....	18
Graphic—Tullahoma Regional Airport Diagram .....	19

## IFR WINDSHIELD GRAPHIC—PRINTABLE .....20

## VFR PROCEDURES - Enroute Frequency Chart



AWOS 128.325

THA ADVISORY 118.7

THA UNICOM 123.0

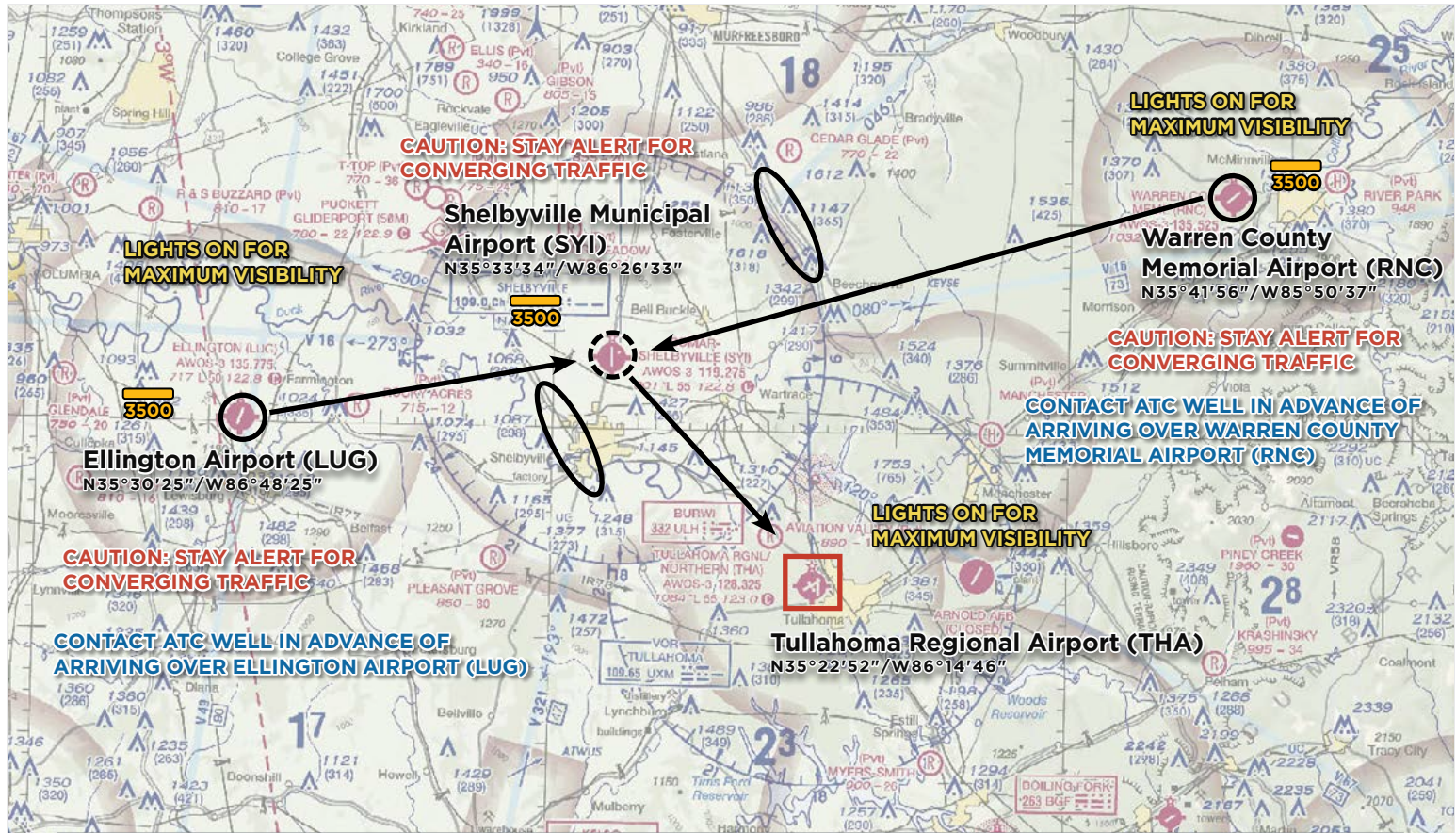


**SEE AND BE SEEN!**

REMEMBER, LIGHTS ON  
FOR SAFETY!



# VFR ARRIVALS OVERVIEW



AWOS 128.325

THA ADVISORY 118.7

THA UNICOM 123.0

## ALL VFR ARRIVALS SHOULD BEGIN AT:

1. **Warren County Memorial Airport (RNC)**, 27 NM northeast of Tullahoma Regional Airport (THA), or
2. **Ellington Airport (LUG)**, 28 NM northwest of Tullahoma Regional Airport (THA).

## TULLAHOMA AIRPORT ADVISORY

AirBoss (non-Federal) personnel will provide Airport ADVISORY service on **118.7** to aircraft operating to and from Tullahoma Regional Airport during the procedures NOTAM effective times. Outside NOTAM times, or if unable to contact Advisory, contact Tullahoma UNICOM on **123.0** and follow standard non-towered airport procedures.

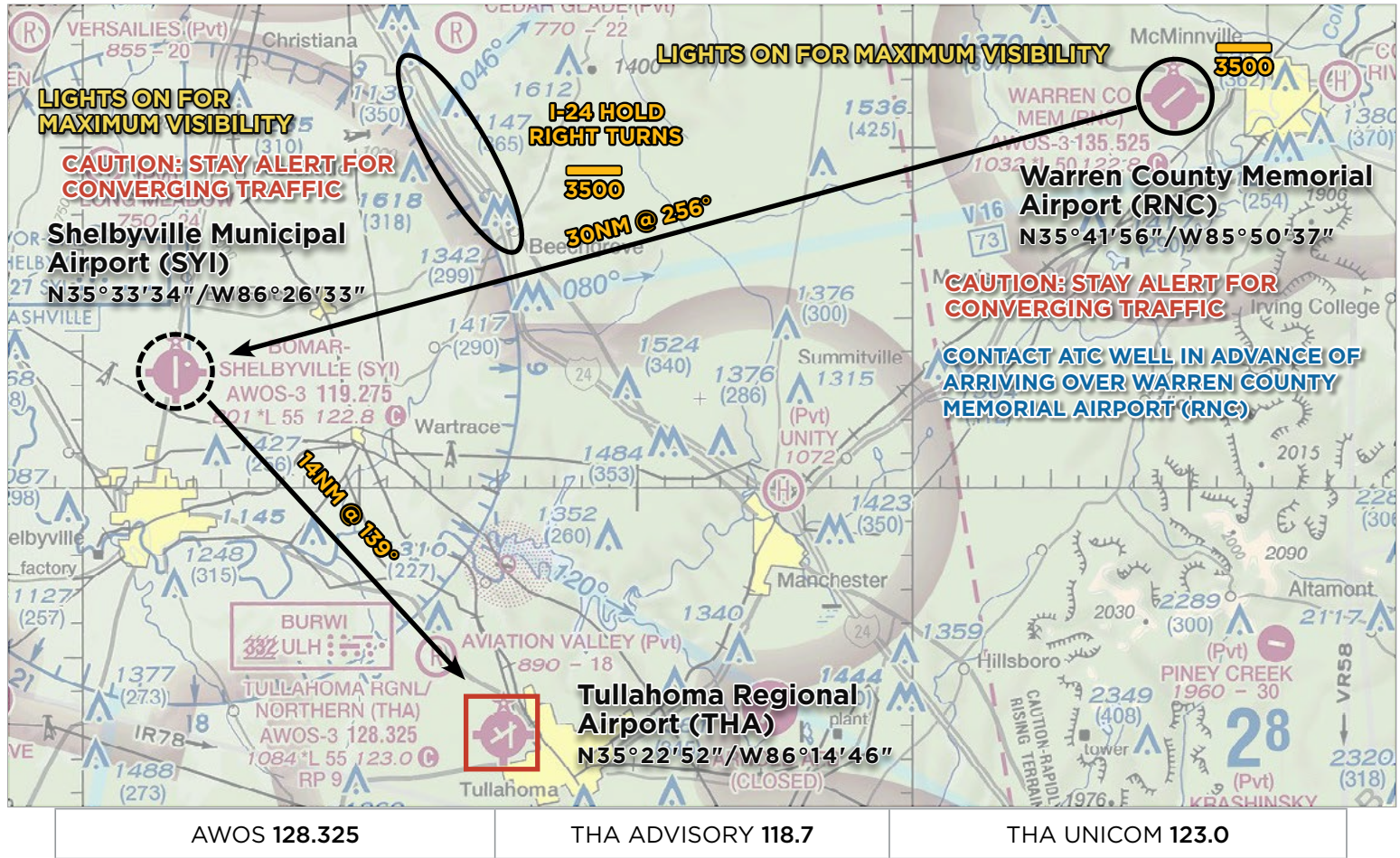
*NOTE: Advisory service does NOT constitute Air Traffic Control (ATC) Service, or ATC Clearance.*

## TEMPORARY VFR PROCEDURES

Specific procedures contained within this NOTAM may be revised at the time of the event. Pilots are urged to review all applicable NOTAMs and arrival/departure procedures prior to conducting a flight to Tullahoma Regional Airport. Users are encouraged to check NOTAMs frequently to verify they possess the most current revisions. This NOTAM does not supersede restrictions pertaining to the use of airspace contained in FDC NOTAMs.



# VFR PROCEDURES - Arrivals over Warren County Memorial Airport (RNC)



## CHECK AWOS ON 128.325 AS SOON AS PRACTICAL.

This arrival procedure begins over Warren County Memorial Airport (RNC) at or below **3500** feet MSL. Pilots are strongly encouraged to obtain flight following from the appropriate ATC facility well in advance of arriving over Warren County Memorial Airport to assist with sequencing and reduce congestion.



**CAUTION: Stay alert for converging traffic. Monitor Warren County Memorial Airport UNICOM 122.8 if practical.**

From Warren County Memorial Airport, aircraft should proceed direct to Shelbyville Municipal Airport (SYI) (**30NM/256°**). If receiving flight following from ATC, expect radar services to be terminated prior to reaching the I-24 Hold. Pilots not in communication with ATC should announce their position over Shelbyville Municipal Airport (SYI) on the Tullahoma Advisory frequency **118.7**.



**CAUTION: Stay alert for converging traffic.**

In the event traffic volume requires holding, follow the hold procedure as depicted in the **I-24 HOLD GRAPHIC**. All aircraft

should fly right turns at or below **3500** feet MSL. Monitor Tullahoma Advisory on **118.7** for information on when to depart the hold. When holding is no longer required, complete the hold and return to the inbound course approximately one nautical mile south of the semi-cloverleaf at Beechgrove, TN and continue inbound toward Shelbyville Municipal Airport (SYI).



**CAUTION: Stay alert for converging traffic. Monitor Shelbyville Municipal Airport UNICOM 122.8 if practical.**

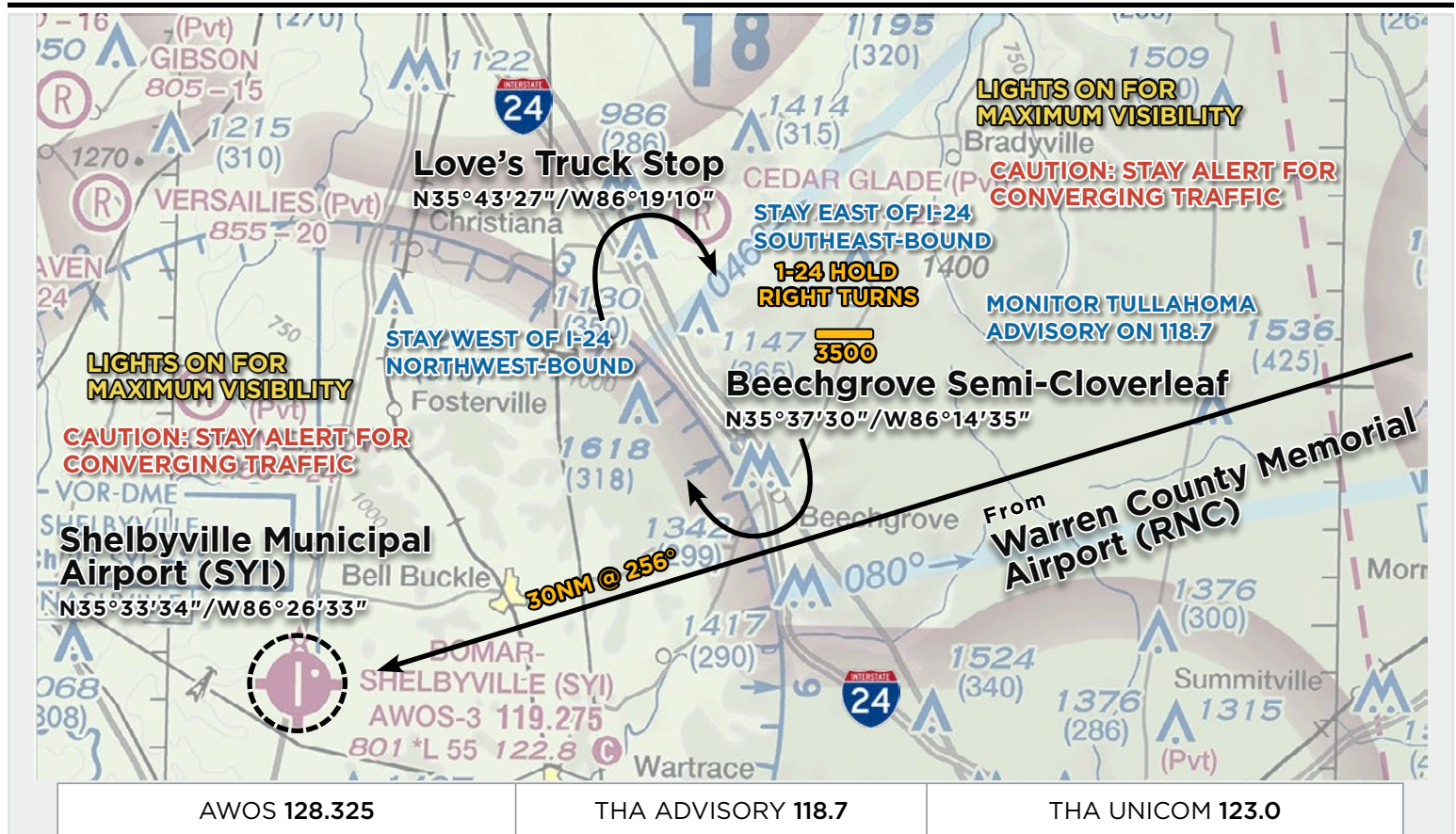
Contact Tullahoma Advisory on **118.7** when passing Shelbyville Municipal Airport (SYI) inbound. Begin descent to pattern altitude at pilot's discretion and follow instructions from Tullahoma Advisory. Depending on wind conditions, expect to land on either Runway **6** or Runway **24**.

## Traffic Pattern Altitude: 2100 MSL

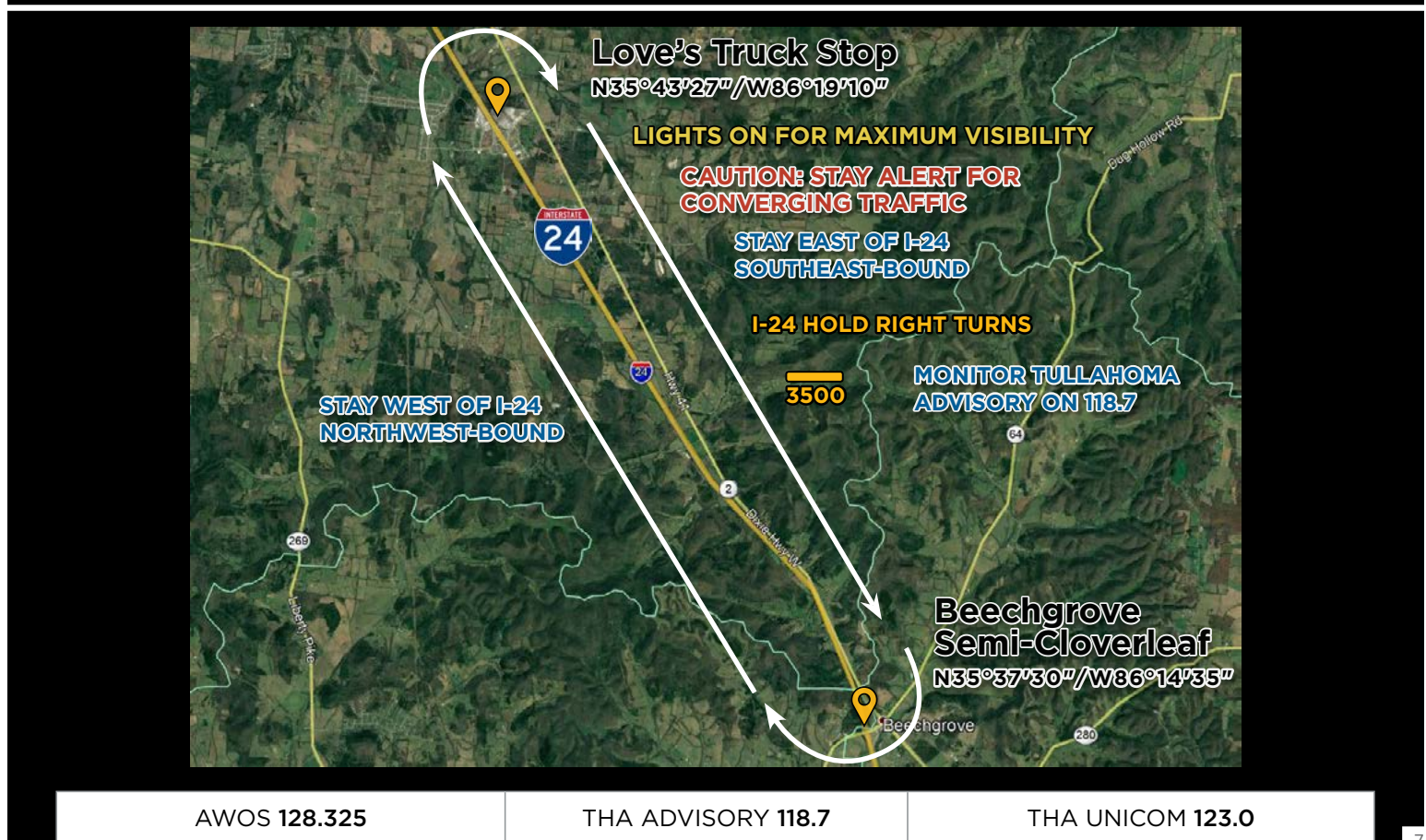
After landing, exit the runway as quickly and as safely as possible. Do not stop on the runway unless necessary. Keep moving after exiting the runway so as not to block subsequent arrivals. Marshalls will direct aircraft to the parking areas.



## VFR PROCEDURES - I-24 VFR Hold



## VFR PROCEDURES - I-24 VFR Hold

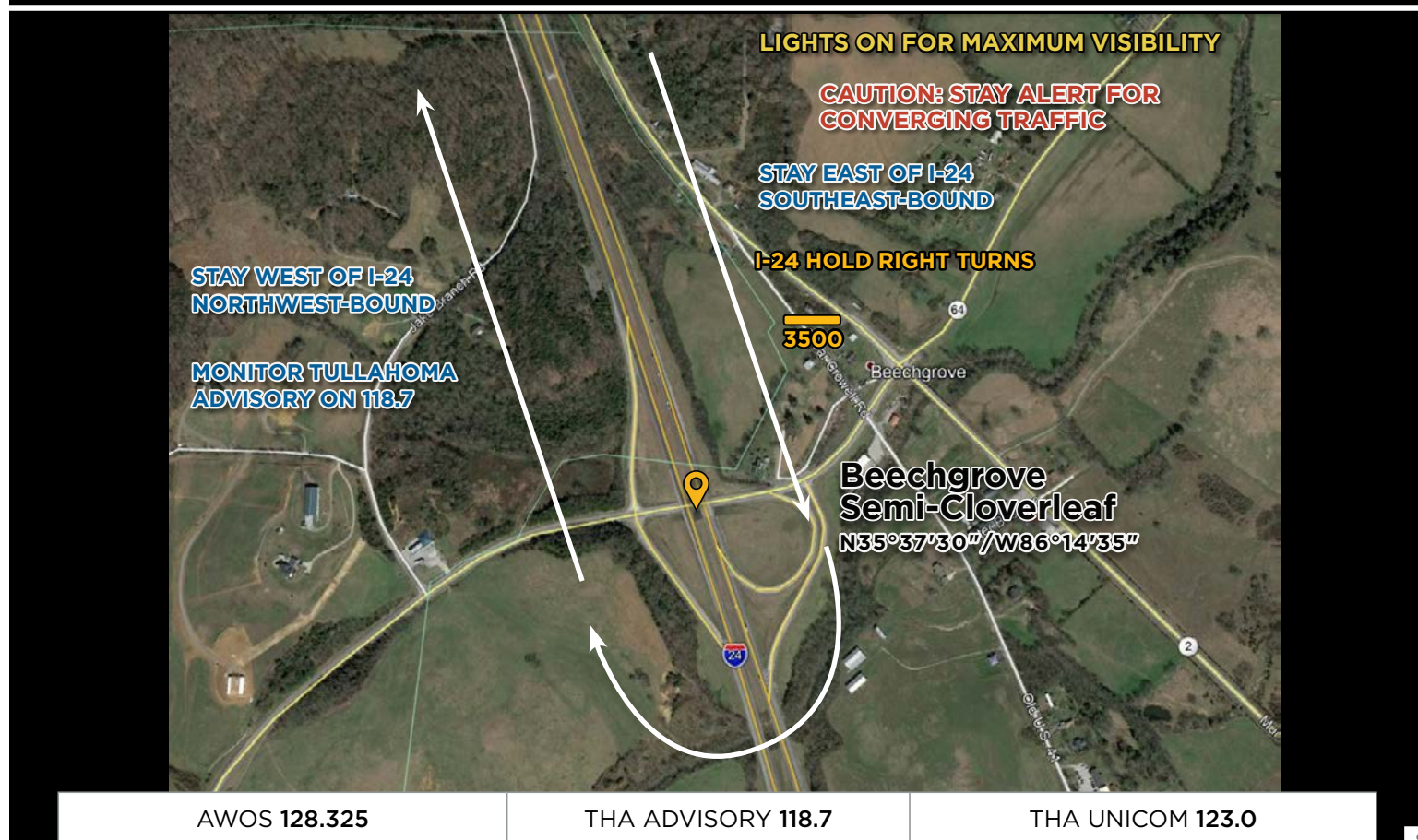




## VFR PROCEDURES - I-24 VFR Hold - Love's Truck Stop

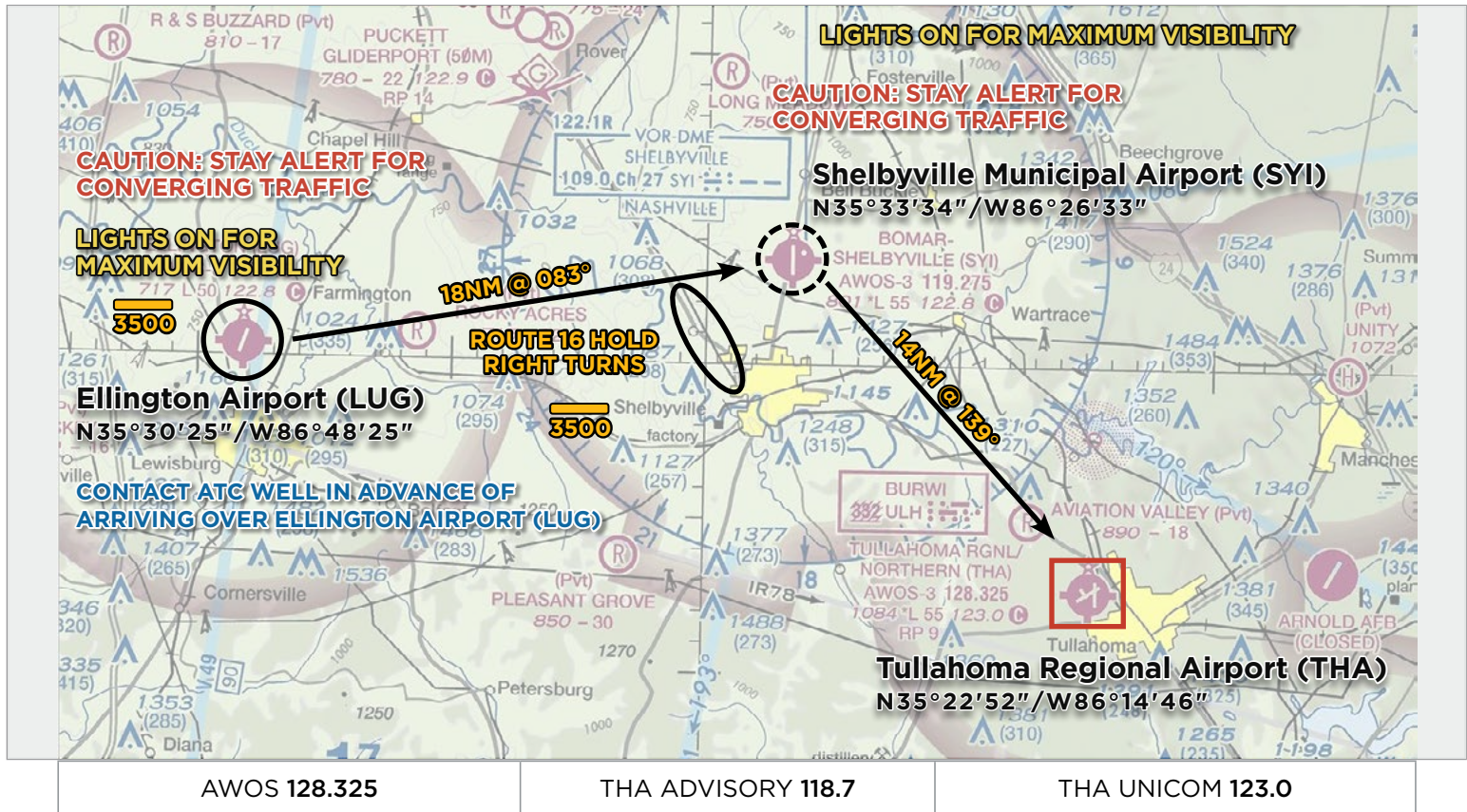


## VFR PROCEDURES - I-24 VFR Hold - Beechgrove Semi-Cloverleaf





# VFR PROCEDURES - Arrivals over Ellington Airport (LUG)



**CHECK AWOS ON 128.325 AS SOON AS PRACTICAL.**

This arrival procedure begins over Ellington Airport (LUG) at or below **3500** feet MSL. Pilots are strongly encouraged to obtain flight following from the appropriate ATC facility well in advance of arriving over Ellington Airport to assist with sequencing and reduce congestion.



**CAUTION: Stay alert for converging traffic. Monitor Ellington Airport UNICOM 122.8 if practical.**

From Ellington Airport, aircraft should proceed direct to Shelbyville Municipal Airport (SYI) (**18NM/083°**). If receiving flight following from ATC, expect radar services to be terminated prior to reaching the Route 16 Hold. Pilots not in communication with ATC should announce their position over Shelbyville Municipal Airport (SYI) on the Tullahoma Advisory frequency **118.7**.



**CAUTION: Stay alert for converging traffic.**

In the event traffic volume requires holding, follow the hold procedure as depicted in the **ROUTE 16 HOLD GRAPHIC**. All aircraft should fly right turns at or below **3500** feet MSL.

Monitor Tullahoma Advisory on **118.7** for information on when to depart the hold. When holding is no longer required, complete the hold and return to the inbound course approximately one nautical mile north of the junkyard and continue toward Shelbyville Municipal Airport (SYI).



**CAUTION: Stay alert for converging traffic. Monitor Shelbyville Municipal Airport UNICOM 122.8 if practical.**

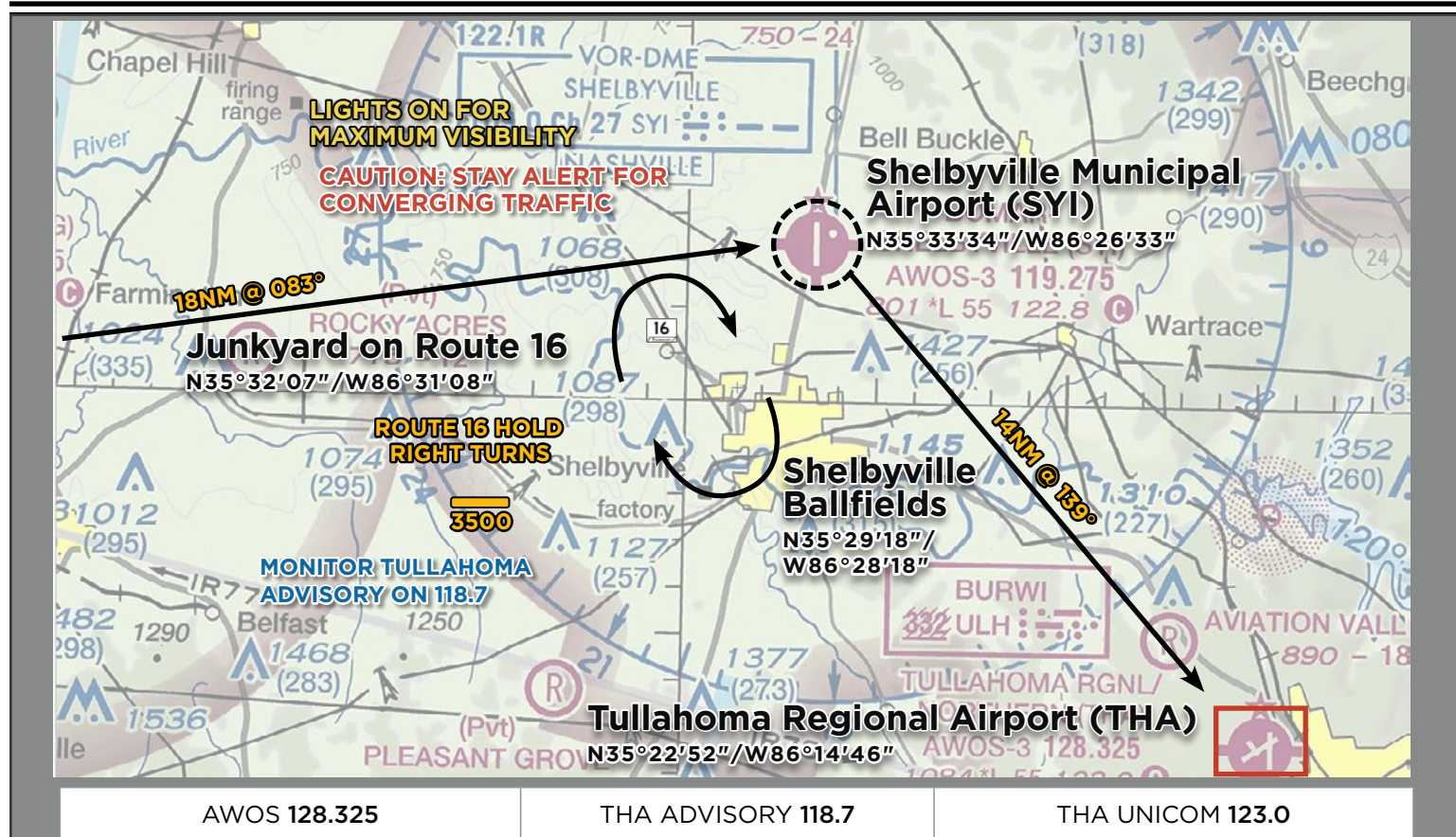
Contact Tullahoma Advisory on **118.7** when passing Shelbyville Municipal Airport (SYI) inbound. Begin descent to pattern altitude at pilot's discretion and follow instructions from Tullahoma Advisory. Depending on wind conditions, expect to land on either Runway **6** or Runway **24**.

**Traffic Pattern Altitude: 2100 MSL**

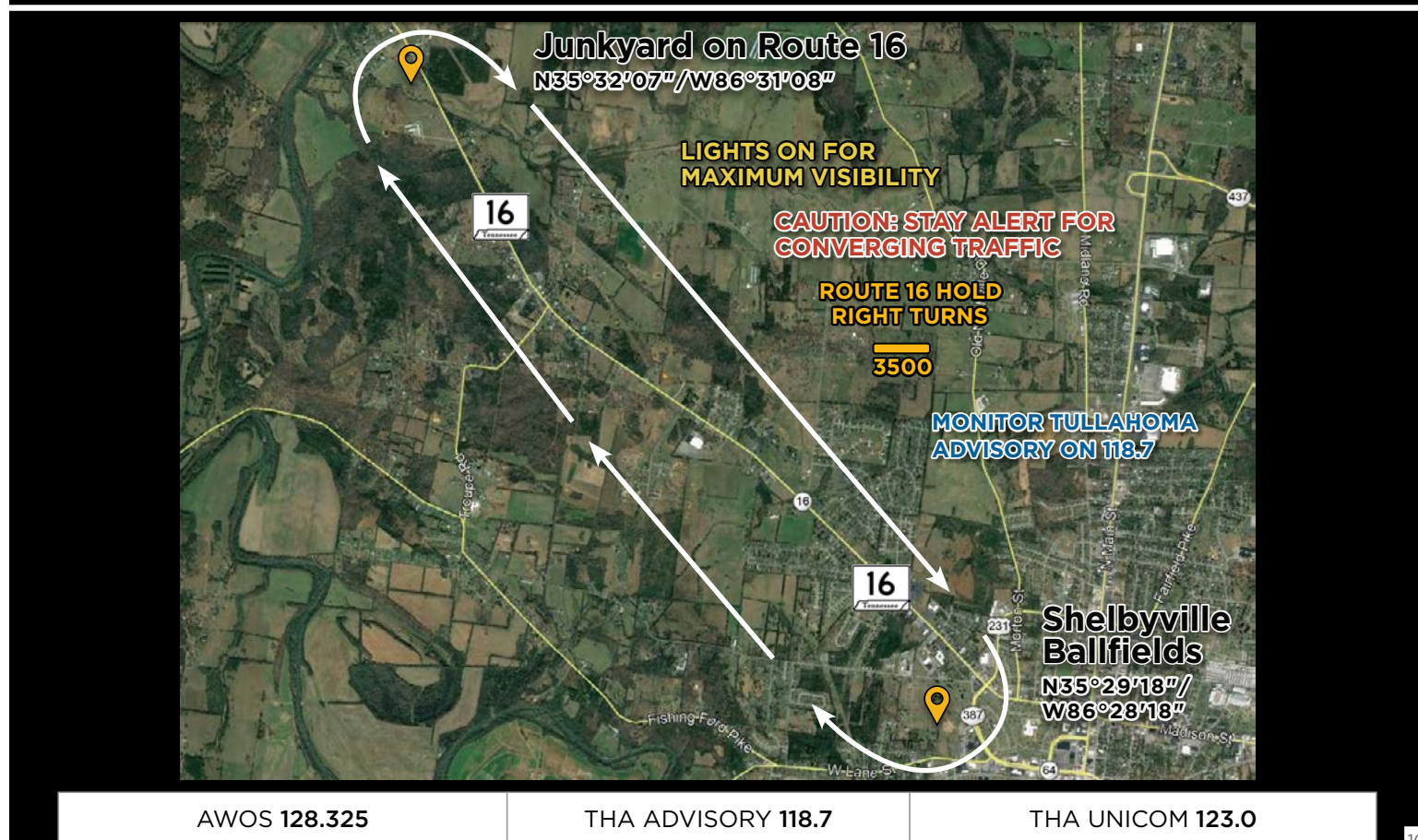
After landing, exit the runway as quickly and as safely as possible. Do not stop on the runway unless necessary. Keep moving after exiting the runway so as not to block subsequent arrivals. Marshalls will direct aircraft to the parking areas.



## VFR PROCEDURES - Route 16 VFR Hold

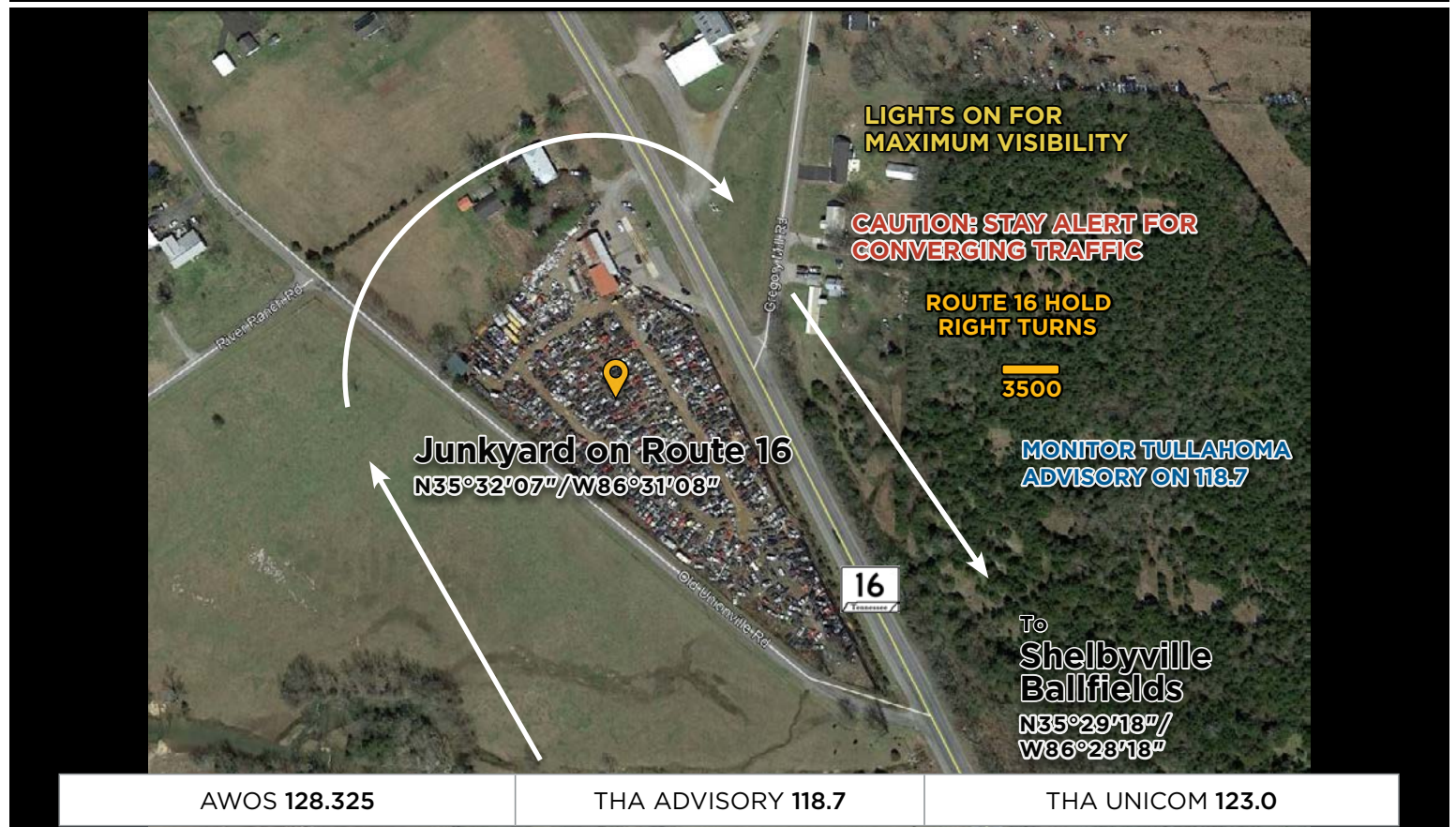


## VFR PROCEDURES - Route 16 VFR Hold

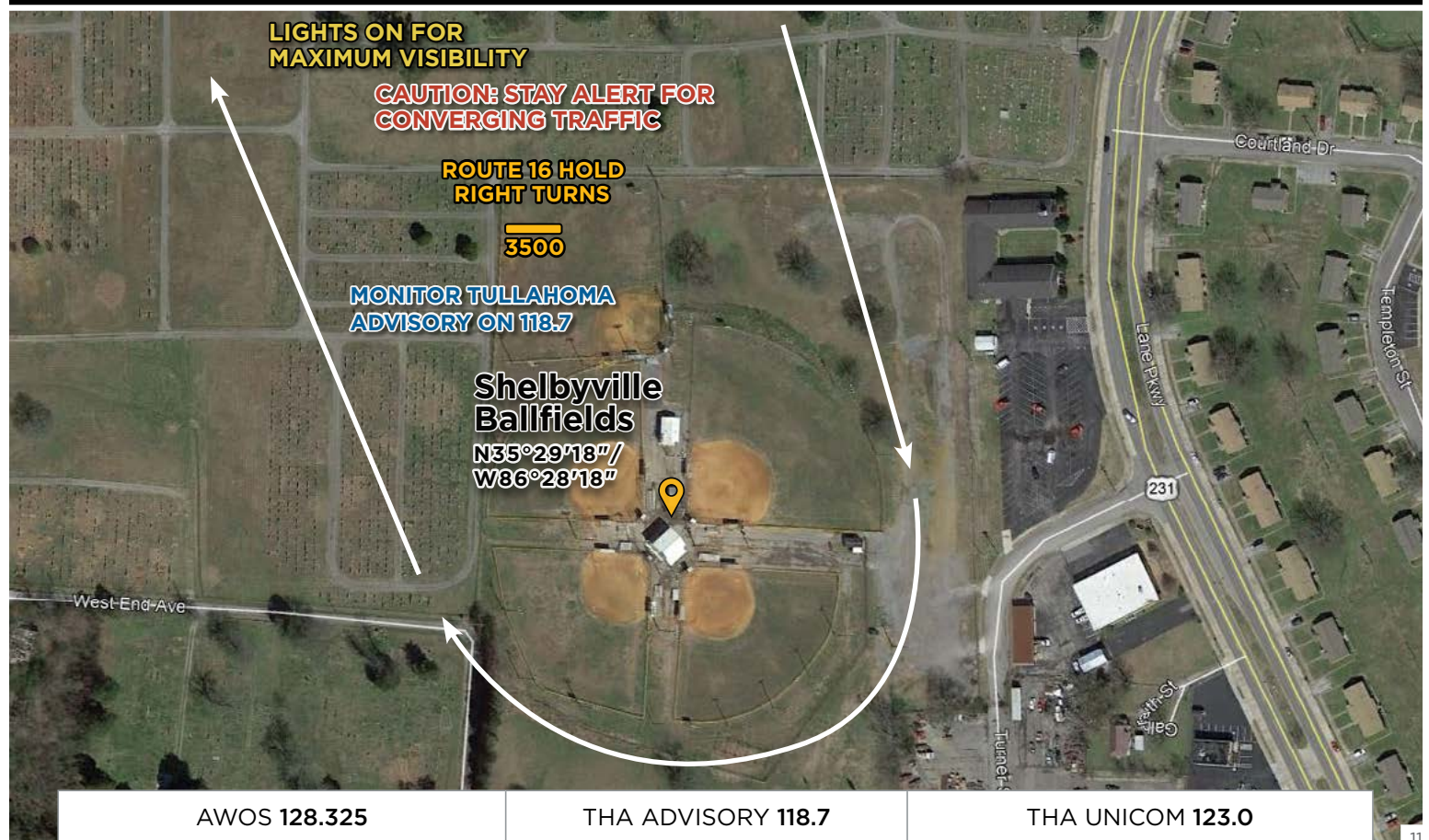




## VFR PROCEDURES - Route 16 VFR Hold - Junkyard



## VFR PROCEDURES - Route 16 VFR Hold - Shelbyville Ballfields





## VFR PROCEDURES - Arriving from Shelbyville Municipal Airport (Northwest)



## LANDING RUNWAY 24 - Tullahoma Regional Airport





## LANDING RUNWAY 6 - Tullahoma Regional Airport



## LANDING RUNWAY 27 - Tullahoma Regional Airport



## LANDING RUNWAY 9 - Tullahoma Regional Airport



**SEE AND BE SEEN!**

REMEMBER, LIGHTS ON  
FOR SAFETY!



IFR ARRIVALS/IFR DELAYS

There is no Special Traffic Management Program for this event. No arrival or departure reservations are required. IFR separation requirements may cause delays when arrival rates exceed airport capacity. Pilots on an IFR flight plan should be prepared for potential holding. IFR flight plans to Tullahoma Regional Airport should be filed at least 4 hours prior to proposed departure time. **IFR arrivals should file to IDEYA and expect the RNAV (GPS) RWY 24 approach.**

*VFR flight on designated arrival routes is highly recommended if practical except turbojet aircraft.*

AIRPORT CLOSURES

Tullahoma Regional Airport will be closed to fixed-wing aircraft during the following times.

Thursday

- 6:30 PM CDT Thursday, September 12, 2019 to 6:30 AM CDT Friday, September 13, 2019.

Friday

- 6:00 PM CDT Friday, September 13, 2019 to 6:30 AM CDT Saturday, September 14, 2019.

Saturday

- 12:00 Noon CDT to 1:30 PM CDT Saturday, September 14, 2019.

RUNWAY CLOSURE

Runway **18/36** is expected to be closed for aircraft parking from 12:00 Noon CDT Thursday, September 12, 2019 until 6:00 PM CDT Saturday, September 14, 2019.

HELICOPTER OPERATIONS

Helicopters are not expected to fly the special VFR Arrival Procedures. When inbound, contact Tullahoma Advisory on **118.7** as soon as practical for specific instructions.

LOCAL TRAINING AND PRACTICE APPROACHES

Local traffic pattern, closed traffic training, and practice instrument approaches **will not be available** at Tullahoma Regional Airport (THA) during the AOPA Fly-In.

NO RADIO AIRCRAFT

Due to high density traffic, aircraft operations without a radio are not authorized.

STUDENT PILOTS

Due to high density traffic, solo student pilot operations are not recommended.

CAUTIONS

Possible lengthy delays associated with heavy arrival and departure times. Heavy arrivals expected **7:00 AM CDT–10:00 AM CDT** Friday, September 13, 2019 and Saturday, September 14, 2019. Heavy departures expected **3:00 PM CDT–6:00 PM CDT** Saturday, September 14, 2019.

Converging traffic over Warren County Memorial Airport (RNC)/Monitor UNICOM **122.8** if practical.

Converging traffic over Ellington Airport (LUG)/Monitor UNICOM **122.8** if practical.

Converging traffic over Shelbyville Municipal Airport (SYI)/Monitor UNICOM **122.8** if practical.

Geese and deer on and in the vicinity of the airport.

Runway **9-27** field condition soft when wet.



# FREQUENCIES AND WAYPOINT INFORMATION

EN ROUTE FREQUENCIES	
Memphis Center	125.85
Memphis Center	128.15
Memphis Center	132.9
Nashville Approach	128.75
Huntsville Approach	125.6
Chattanooga Approach	119.2
Atlanta Center	133.6

\* See frequency graphic for correct facility to contact depending on position.

TULLAHOMA REGIONAL AIRPORT FREQUENCIES	
AWOS-3	128.325 (931-454-2052)
TULLAHOMA ADVISORY	118.7
CTAF	123.0
UNICOM	123.0

SPECIFIC LATITUDE/LONGITUDE COORDINATES			
ARRIVALS OVER WARREN COUNTY MEMORIAL AIRPORT (RNC)		ARRIVALS OVER ELLINGTON AIRPORT (LUG)	
Warren County Airport (RNC)	N35°41'56''/W85°50'37''	Ellington Airport (LUG)	N35°30'25''/W86°48'25''
Beechgrove Semi-Cloverleaf	N35°37'30''/W86°14'35''	Junkyard on Route 16	N35°32'07''/W86°31'08''
Love's Truck Stop	N35°43'27''/W86°19'10''	Shelbyville Ballfields	N35°29'18''/W86°28'18''
Shelbyville Municipal Airport (SYI)	N35°33'34''/W86°26'33''	Shelbyville Municipal Airport (SYI)	N35°33'34''/W86°26'33''
Tullahoma Regional Airport (THA)	N35°22'52''/W86°14'46''	Tullahoma Regional Airport (THA)	N35°22'52''/W86°14'46''

DEGREES, MINUTES, SECONDS CONVERTED TO DECIMAL DEGREES			
ARRIVALS OVER WARREN COUNTY MEMORIAL AIRPORT (RNC)		ARRIVALS OVER ELLINGTON AIRPORT (LUG)	
Warren County Airport (RNC)	35.69888889°/ 35.69888889°	Ellington Airport (LUG)	35.506944°/ 86.806944°
Beechgrove Semi-Cloverleaf	35.625°/ 85.243056°	Junkyard on Route 16	35.535278°/ 86.518889°
Love's Truck Stop	34.724167°/ 86.319444°	Shelbyville Ballfields	35.488333°/ 86.471667°
Shelbyville Municipal Airport (SYI)	35.559444°/ 86.4425°	Shelbyville Municipal Airport (SYI)	35.559444°/ 86.4425°
Tullahoma Regional Airport (THA)	35.381111°/ 86.246111°	Tullahoma Regional Airport (THA)	35.381111°/ 86.246111°



# TULLAHOMA REGIONAL AIRPORT GENERAL INFORMATION



## PARKING AREAS

- When operating in the parking areas, pilots are encouraged to be extra alert for taxiing aircraft, aircraft with engine(s) running, and vehicle/pedestrian traffic.
- Marshalls will be assisting aircraft to and from parking areas and run-up areas.
- For safety reasons, high RPM engine running is prohibited in designated parking areas. For departure, it is recommended that pilots conduct their run-up procedures in queue if practical.
- Please review the parking map prior to landing and departing.

## VEHICULAR TRAFFIC

- Vehicles are not allowed on ramps except those belonging to airport operators and tenants.

## PREFLIGHT PLANNING

- Please ensure that you have reviewed the special flight information, departure procedures, and temporary taxi procedures prior to engine start.
- High density traffic is expected Friday and Saturday morning. Consider arriving during off-peak hours.

## PARKING AND SERVICE DETAILS

- Fuel/oil orders will be taken at the time your aircraft is parked. If you need either, please make sure to make the request at that time. Orders made at a later time might delay your departure. Credit card information will be requested at the time the order is placed. Receipts if requested will be emailed or available in the FBO. Order slip will be attached to propeller. If you are uncomfortable providing credit card information on the ramp, you can provide the information directly to the FBO's front desk.

## CHOCKS, TIE DOWNS, AND TOWBARS

- Chocks will not be available, so we highly recommend that you bring your own. Tie down hooks are few and far between and parking on a tie down space is very unlikely. It is recommended that you bring tie-downs and anchors for any additional aircraft securing needs. Bring your own towbar as well if you will need one.

## CAMPING

- Aircraft camping will be permitted at Tullahoma Regional Airport (THA) from 12:00 Noon CDT Thursday, September 12, 2019 until 12:00 Noon CDT Sunday, September 15, 2019. Space is limited and will be available on a first-come, first-served basis. If you plan to camp, you must RSVP ahead of time. A confirmation will be sent with additional information. Camping aircraft will be requested to prominently display the letter **C** in the windshield. [See the AOPA website for more information.](#)



# TULLAHOMA REGIONAL AIRPORT DEPARTURE PROCEDURES

---

## IFR DEPARTURES

Place printed large IFR letters in the windshield. Follow marshalls instructions to taxi to the nearest designated IFR departure holding area and contact Tullahoma Advisory on **118.7**.

## VFR DEPARTURES

**VFR Flight Following:** Pilots wanting VFR flight-following should make the request to the following ATC facility at the distance specified. Please do not contact the ATC facility until you have reached the specified distance from Tullahoma Regional Airport.

*VFR Traffic Advisories/Flight Following will be provided on a workload-permitting basis only.*

THA 300-030 Bearing at 20 NM,  
contact Nashville Approach on **128.75**

THA 030-060 Bearing at 35 NM,  
contact Memphis Center on **132.9**

THA 060-080 Bearing at 45 NM,  
contact Atlanta Center on **133.6**

THA 080-140 Bearing at 35 NM,  
contact Chattanooga Approach on **119.2**

THA 140-250 Bearing at 35 NM,  
contact Huntsville Approach on **125.6**

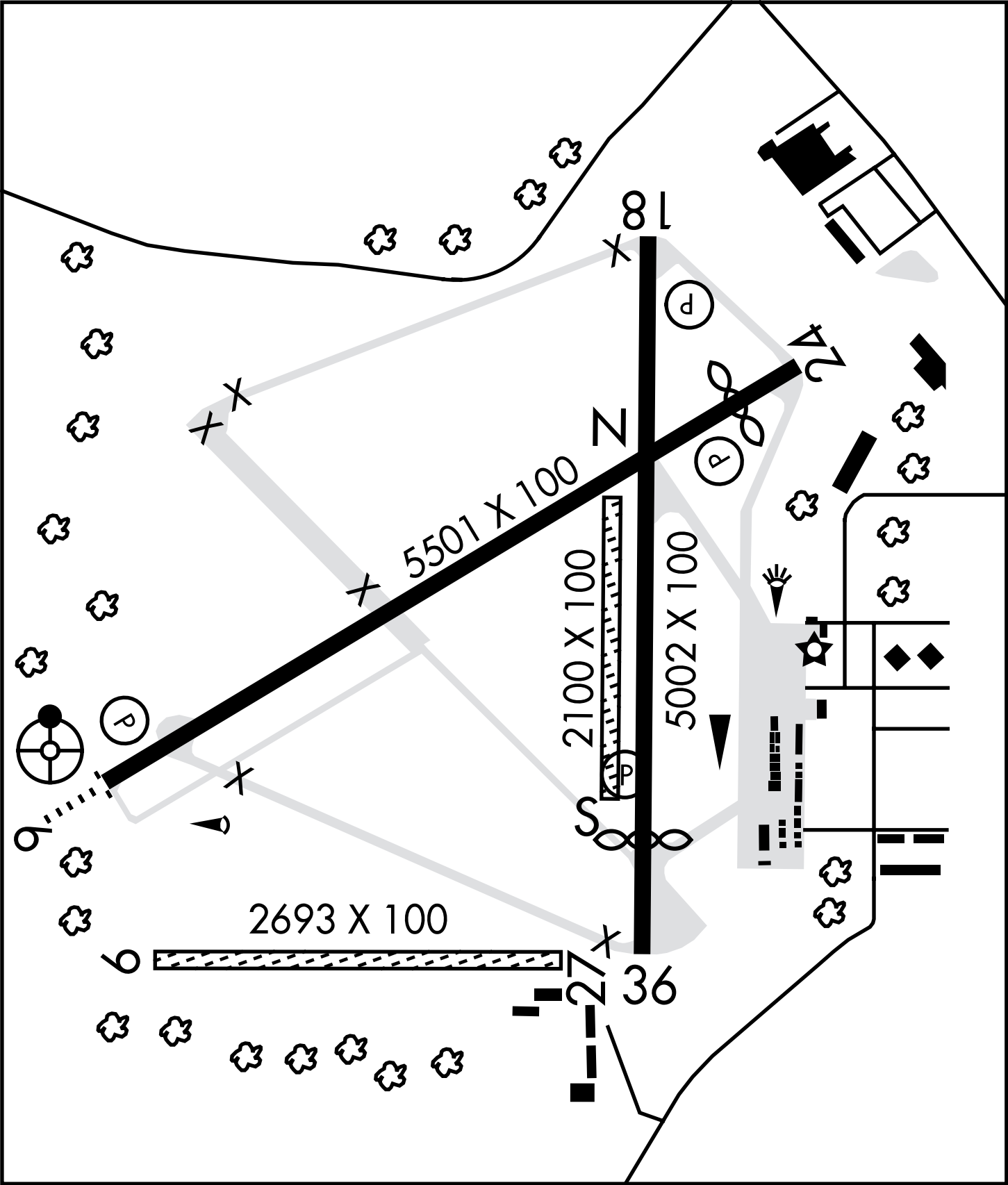
THA 250-300 Bearing at 35 NM,  
contact Memphis Center on **125.85**

**Prior to start-up** — Please ensure that you have reviewed the special flight information, departure procedures, and temporary taxi procedures prior to engine start. Check AWOS on **128.325**.

- **Engine start/Run Up** – If practical, it is recommended that you conduct your run-up while in queue for departure. Please consider propeller blast during your run-up.
- **Taxi** – Follow instructions from marshalls to taxi for departure runway. **MONITOR ONLY** Tullahoma Advisory on 118.7.
- **Departure** — Contact Tullahoma Advisory on **118.7** when **number one** for departure and be prepared for immediate take-off. Expect to fly runway heading for 3 NM before turning on course or as instructed.



# TULLAHOMA REGIONAL AIRPORT DIAGRAM







Print & place graphic in  
aircraft windshield if departing IFR