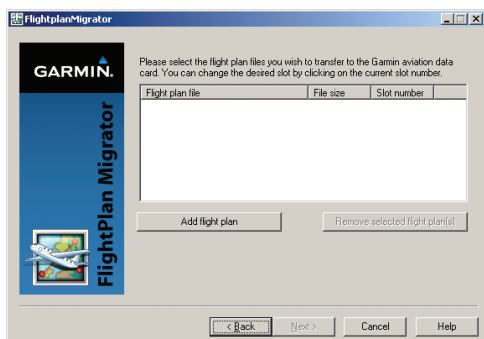
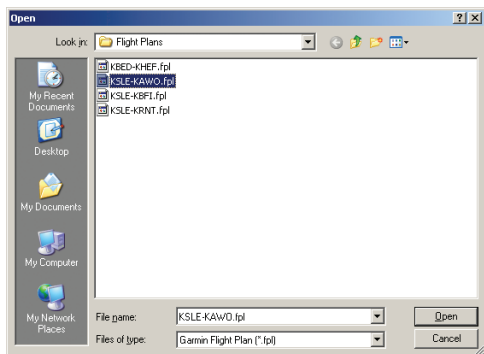


The Garmin FlightPlan Migrator™ program transfers flight plans stored on your computer to the flight plan data card using the Garmin USB Aviation Data Card Programmer.

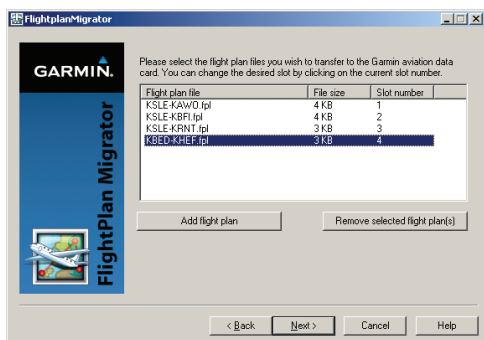
1. Insert the FlightPlan Migrator™ CD into your computer's disc drive and follow the on-screen instructions to install the Garmin Aviation USB drivers and FlightPlan Migrator™ software.
2. Insert the flight plan data card into the programmer. Start the FlightPlan Migrator™ program. Click on the **Next** button.
3. Click on the **Add flight plan** button to add flight plan files.



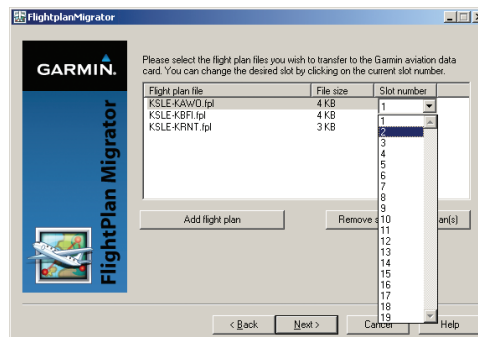
4. Navigate to the location on your computer where the flight plan files are stored. Click on the desired flight plan file and click on **Open**. Repeat until all desired flight plan files are added.



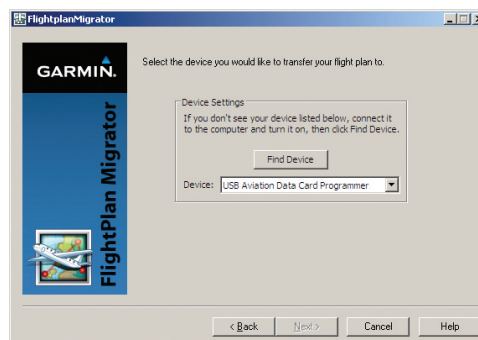
5. Edit the flight plan list, if necessary. You can remove files and change the slot number of a flight plan.
- 5a. To delete a flight plan file, click on the file to highlight it, and then click on the **Remove selected flight plan(s)** button.



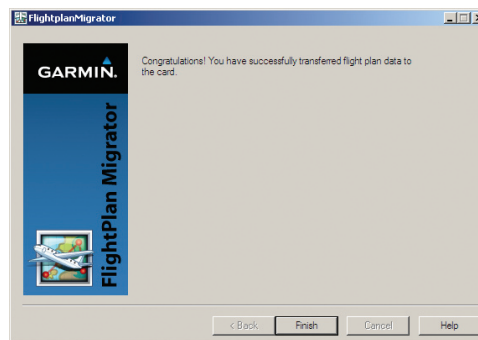
- 5b. You may change the slot number of a flight plan. The slot number is the place in the order within the Flight Plan Catalog of your Garmin GPS unit where the flight plan will be placed. Click on the slot number of the flight plan file. A drop down menu will be displayed. Click on the desired slot number. Duplicate slot numbers are not allowed.



6. When the flight plan file list is complete, click on the **Next** button. The next display is for selecting the device to transfer the flight plan. The installed programmer should be shown in the Device window.



7. Click on the **Next** button. The flight plan files will be transferred to the card in the programmer.



8. Click on the **Finish** button. Remove the card.
9. Take the card to your aircraft. With the power to the GPS unit off, remove the terrain data card, and insert the flight plan data card. Power up the GPS unit and follow the on-screen instructions. Power off the unit, remove the flight plan data card and replace it with the terrain card. The transferred flight plans are now ready for use in your 400W/500W-series unit. See latest revision of the 400W/500W-series Pilot's Guide for detailed instructions on importing flight plans from the flight plan data card to the navigator.