



# iFlightPlanner

PLAN. FLY. LOG.

## Installation & Setup Guide



for  **FSXFlight**

With **iFlightPlanner for iPad v2.0** you now have the ability to connect your iPad to your favorite flight simulator using **FSXFlight** by Jacob Eiting and unleash the best flight planning and in-flight simulation experience anywhere!

Combining iFlightPlanner, FSXFlight and **Lockheed Martin Prepar3D**, **Microsoft Flight Simulator 2004** or **Microsoft Flight Simulator X** allows pilots of all realms to plan flights using iFlightPlanner and view those routes in **iFlightPlanner for iPad** for use in their flight simulator. Once in the virtual cockpit, FSXFlight will push all simulated GPS data to iFlightPlanner for iPad via networked WiFi connection and force the iPad to behave as if it were flying in the same airplane!

*This instructional guide assumes that you have already purchased FSXFlight and are a current iFlightPlanner Premium member. If you are not yet an iFlightPlanner Premium member, please visit <http://www.iFlightPlanner.com/FSXFlight> to create or upgrade your membership.*

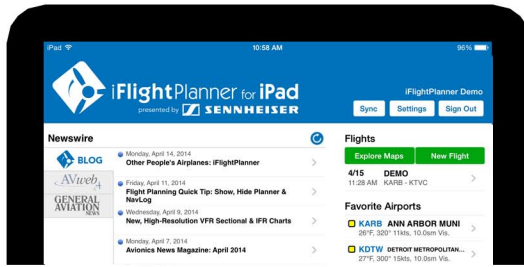
Follow these ten (10) steps to install the necessary components required to run the software and prepare iFlightPlanner for iPad for use with FSXFlight!

1. Using the link provided on your receipt from FSXFlight, download **FSXFlight.zip** onto the computer where your flight simulator is installed. Open the .zip file, extract it and run **FSXFlightInstall.exe** to install.
2. Visit <http://www.schiratti.com/dowson.html> to download the appropriate version of FSUIPC for your flight simulator. Open the .zip file, extract it and run the FSUIPC installer.
3. Start your flight simulator of choice and confirm that you want to make FSUIPC a permanently available add-on for your flight simulator software.
4. Initiate a flight beginning on the ramp, on the runway or in the air. Check to make sure that FSUIPC was properly installed by checking the “Add-ons” menu in your simulator.
5. Start FSXFlight by double-clicking the FSXFlight application icon. Because your flight simulator is already running FSXFlight should read “Connected to FSX” as shown here.

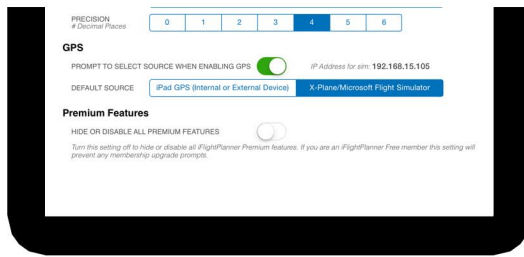


6. Ensure your iPad is connected to the same WiFi network as your computer that is running your flight simulator.
7. Launch **iFlightPlanner for iPad v2.0**, or any newer version of iFlightPlanner for iPad, and log in if you have not already done so.

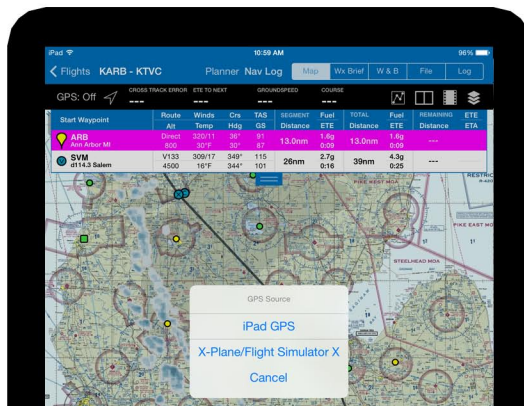
8. In the upper-right corner of the iFlightPlanner for iPad “Home” screen tap the “Settings” button.



9. Select either “iPad GPS” or “X-Plane/Flight Simulator” as your “Default Source” for GPS data. If you wish to have iFlightPlanner for iPad prompt you to select which source to use when enabling the GPS, toggle the ON/OFF switch to “ON”.



10. To view your GPS location in iFlightPlanner for iPad tap either of the green, “Explore Maps” or “New Flight” buttons and enable the GPS function. When the “GPS Source” menu appears simply select “X-Plane/Flight Simulator”.



All features that rely on GPS data (i.e., moving map, digital flight instruments and detailed navigation log) will now behave as if it were in the virtual cockpit with you!

## Troubleshooting Quick Tips

### Why does FSXFlight prompt me to “Open With” on startup?

Some web browsers strip the .EXE extension from FSXFlight during the download process. Simply rename the file to FSXFlight.exe and try starting FSXFlight again.

### Why is FSXFlight “Not Connected” to my flight simulator?

Start your flight simulator and confirm that FSUIPC is listed on the “Add-on” menu. If not, ensure that you have installed the appropriate version of FSUIPC for your flight simulation software from <http://www.schiratti.com/dowson.html>.

### How do I setup iFlightPlanner for iPad to work with FSXFlight?

Refer to PAGE 2 of iFlightPlanner’s **Installation & Setup Guide** for FSXFlight.

### FSXFlight is “Connected to FSX” but why is iFlightPlanner for iPad is showing a different GPS location than my virtual aircraft?

Make sure that the iPad running iFlightPlanner for iPad is connected to the same WiFi network as the computer running your flight simulator and that you have selected the correct “GPS Source” when prompted by iFlightPlanner.

### How do I broadcast my virtual GPS location to multiple iPads running iFlightPlanner for iPad?

Make sure that the iPads running iFlightPlanner for iPad are connected to the same WiFi network as the computer running the flight simulator and that you have selected the correct “GPS Source” when prompted by iFlightPlanner.

### Can I install FSXFlight on multiple machines?

Purchasing FSXFlight entitles you to one license for a single simulator installation.

### How do I contact FSXFlight for technical support?

Technical support questions related to FSXFlight should be directed via email to [support@fsxflight.com](mailto:support@fsxflight.com).

### How do I contact the iFlightPlanner Crew for flight planning support?

Flight planning support questions may be directed to iFlightPlanner using the online “Contact Us” form available at <http://www.iFlightPlanner.com/ContactUs>.