

4.6 Import Flight Plans with an SD Card

Flight plans can be created on a computer using compatible flight planning software and saved to the SD card to be imported into the GTN. The imported flight plans can then be activated or stored to the flight plan catalog once they are previewed by the pilot.



NOTE: Flight plans over 99 waypoints long are truncated at 99 waypoints and the last waypoint in the imported/uploaded flight plan may not be the destination airport.



NOTE: This feature is available in software version 5.10 and later.



NOTE: The flight plan file format used by the GTN is different than the file format used by the GNS 400W/500W Series navigators.



1. While viewing the Flight Plan page, touch the **Menu** key and then the **Catalog** key to display the Flight Plan Catalog.



Touch To Import Flight Plan

Flight Plan On SD Card



Figure 4-58 Catalog for SD Card Flight Plan Import



2. An **Import** key will be present in the menu bar when flight plans are present on the SD card. Touch the **Import** key to open a pop-up with a list of the file names of the flight plans on the SD card.

Touch To Import Flight Plan From SD Card

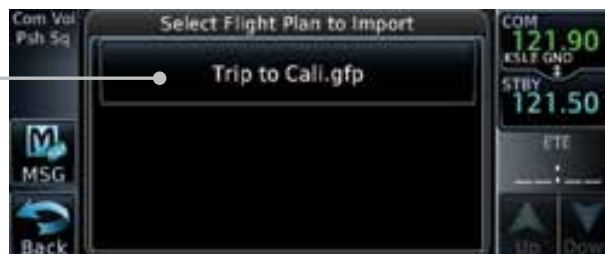


Figure 4-59 Flight Plan To Import From SD Card

Foreword



Getting Started

Xpdr Ctrl

Com/Nav



Direct-To

Proc



Wpt Info



Map

Touch To Store To Save Flight Plan To The Catalog

Traffic

Terrain

Weather

Nearest

Services/
Music

Utilities

System

Messages

Symbols

Appendix

Index

- After selecting the desired flight plan to import, the GTN will attempt to import the flight plan and open the Route Options slide out menu. The imported flight plan must be previewed before being activated. Touch **Preview** to view the flight plan.

Touch To Preview Flight Plan From SD Card



Figure 4-60 Route Options For SD Card Flight Plan Import

- Press **Store** to save the flight plan to the catalog. Press **Activate** to make the imported flight plan the active route.

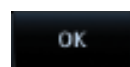


Touch To Make The Imported Flight Plan The Active Route

Figure 4-61 Route Options For SD Card Flight Plan Import

4.6.1 Potential Errors

If the GTN is unable to import a flight plan due to errors in the flight plan or a full catalog, the pilot will immediately be alerted with a pop-up.



1. Touch OK at the prompt to continue.

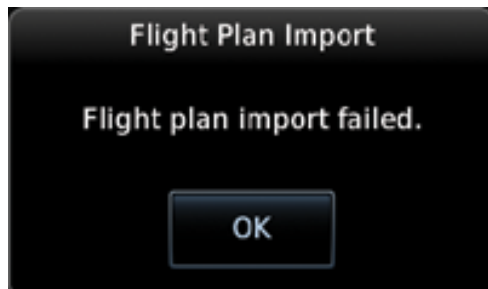


Figure 4-62 Flight Plan Import Fault

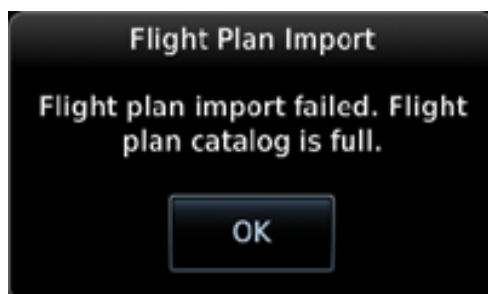
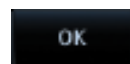


Figure 4-63 Flight Plan Import Fault - Catalog Full



2. If an imported flight plan contains any errors, pop-up messages will be displayed alerting the pilot of the issues and the resulting changes to the flight plan. These pop-ups are presented the first time that the flight plan is viewed on the Flight Plan Preview page.

When the imported flight plan is too long, the GTN will truncate the flight plan to the correct length. The pilot should be aware that waypoints are missing from the end of the flight plan.

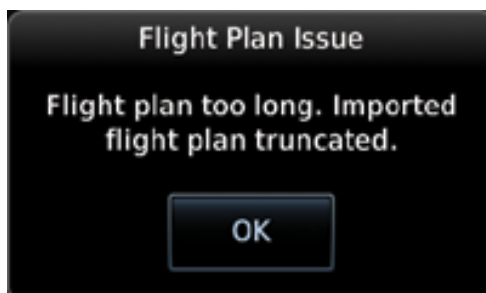


Figure 4-64 Flight Plan Import Issue - Flight Plan Too Long

Foreword

Getting Started

Xpdr Ctrl

Com/Nav

FPL

Direct-To

Proc

Wpt Info

Map

Traffic

Terrain

Weather

Nearest

Services/
Music

Utilities

System

Messages

Symbols

Appendix

Index



- When the imported flight plan contains waypoints (non-user waypoints), procedures, or airways that are not found in navigation database, the GTN will replace those waypoints with locked waypoints. These locked waypoints must be resolved prior to activating the flight plan.

When more than one error occurs during the flight plan import, the pilot will need to cycle through the errors by touching the **Next** key on the pop-up.

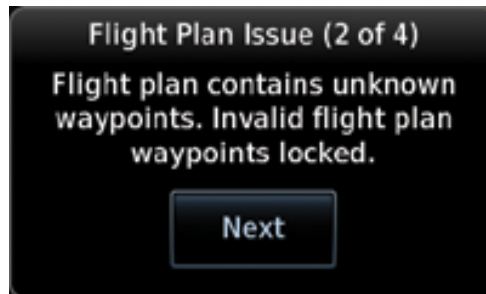


Figure 4-65 Flight Plan Import Issue - Flight Plan Contains Unknown Waypoints

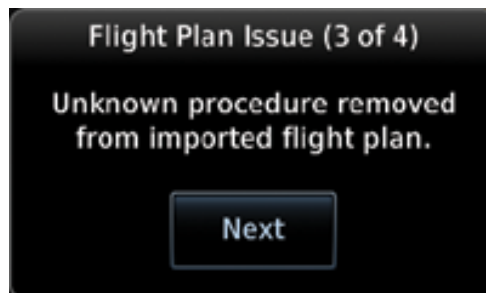


Figure 4-66 Flight Plan Import Issue - Unknown Procedure Removed From Flight Plan

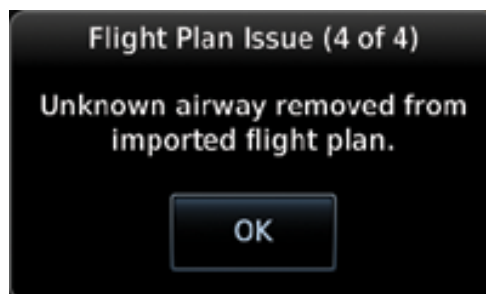


Figure 4-67 Flight Plan Import Issue - Unknown Airway Removed From Flight Plan