

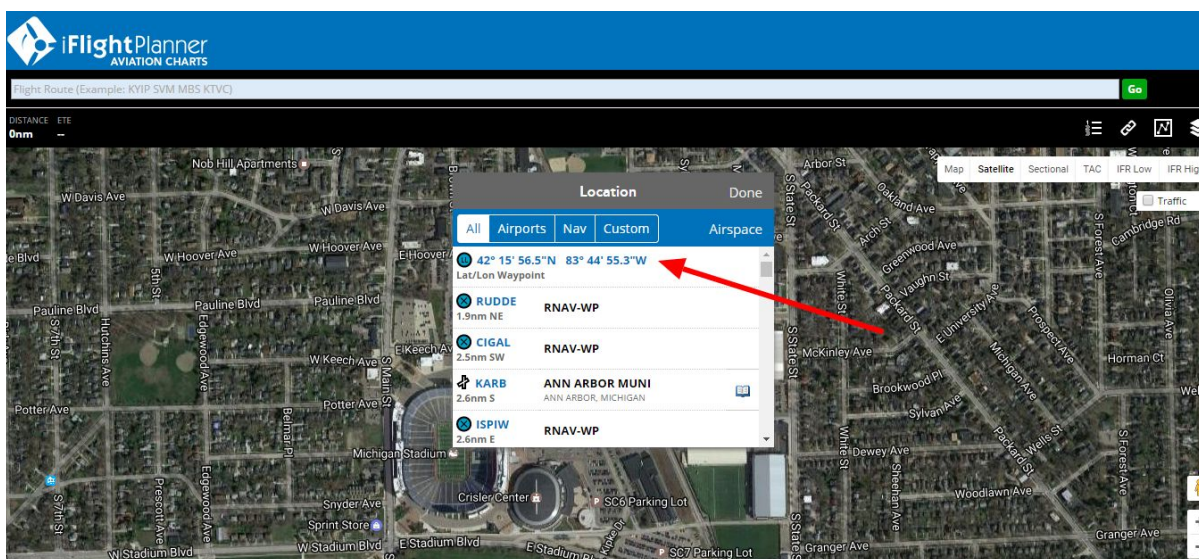
iFlightPlanner's [freely accessible aviation charts interface](#) is the perfect resource for UAS operators to pinpoint lat/long coordinates, identify the nearest airport, view airspace details, and prepare their description of the proposed operation when requesting a [waiver and/or airspace authorization](#) under Title 14 CFR Part 107 of the Federal Aviation Regulations (FAR).

ATTENTION: This step-by-step guide helps operators gather the information necessary to submit a waiver or authorization through the [FAA DroneZone](#). It's important that all operators to review the [Step-by-Step Application Process](#), [Waiver Application Instructions](#), and [Waiver Safety Explanation Guidelines](#), and [Advisory Circular 107-2](#) as published by the **Federal Aviation Administration (FAA)** before any operations.


1. Go to www.iFlightPlanner.com/AviationCharts to access iFlightPlanner's freely accessible aviation charts interface and bookmark the page for future use.
2. Zoom to the location where your drone operations will be centered using the Google Map controls in the lower-right corner of the map or the scroll wheel on your mouse.

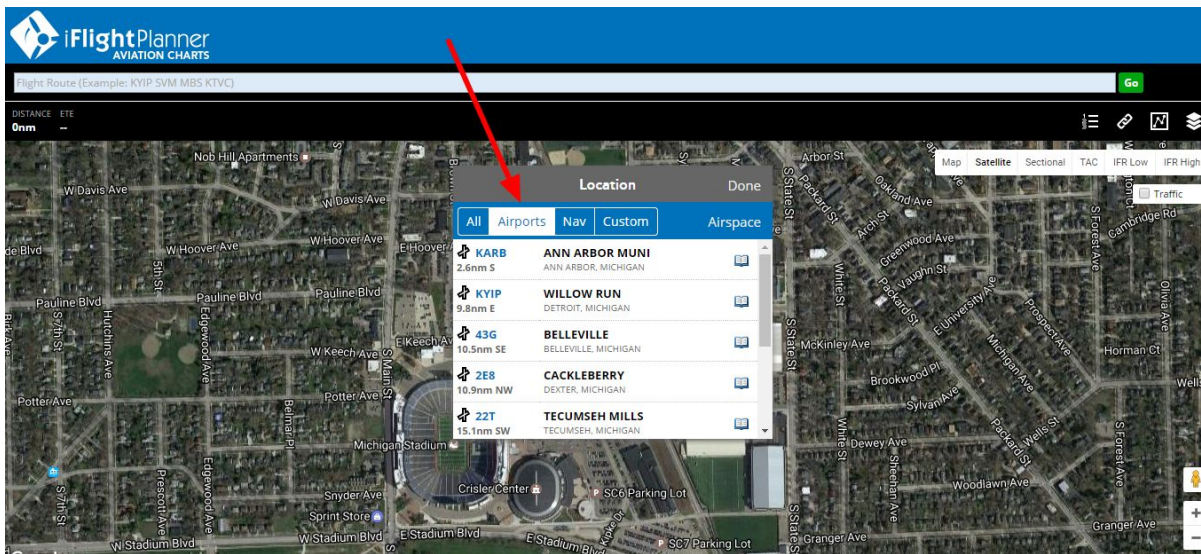
NOTE: [iFlightPlanner Premium](#) and [Premium Plus](#) members may **convert a street address to lat/long** using the green, *Enter Street Address or City & State* button found when clicking in the *Flight Route* field. Once the blue, lat/long icon is placed on the map it may be dragged to a more precise location on the map, all while switching between Google Satellite imagery and iFlightPlanner's aviation charts. Click [HERE](#) to upgrade!

3. Click on the map and note the lat/long coordinates, including the north, east, south, west designation shown on the first line of the Location menu that appears (see screenshot).

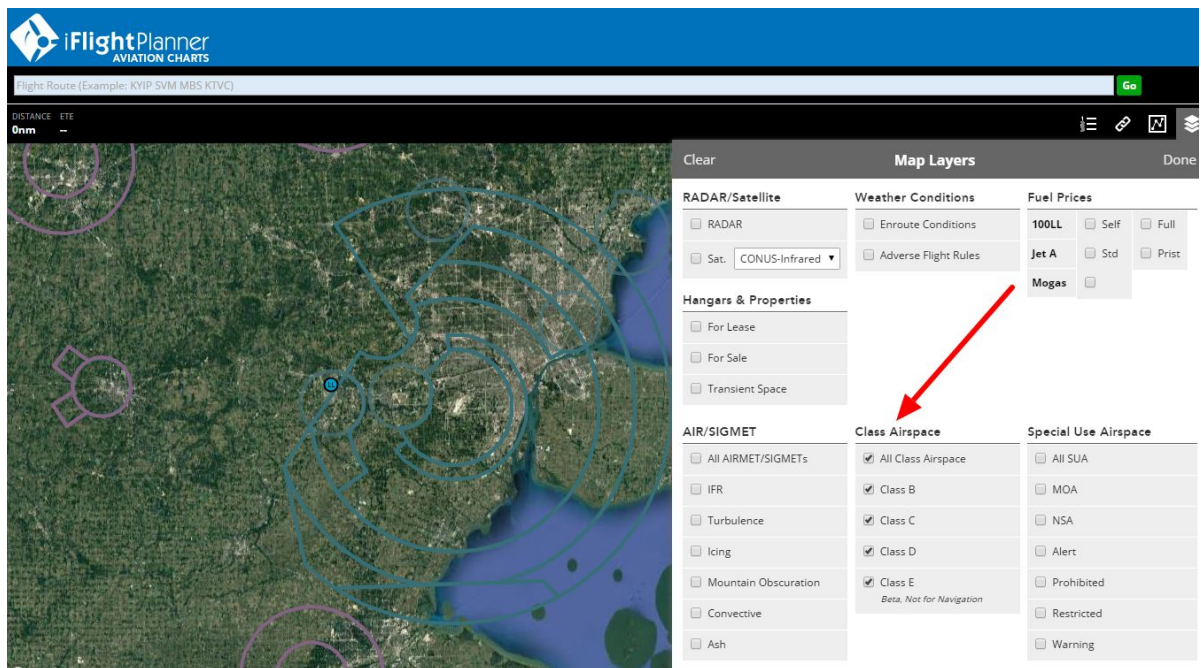


NOTE: If the coordinates in the Location menu are not presented in Whole Seconds (DD° MM' SS") as required by the FAA, go to www.iFlightPlanner.com/MyProfile/Aviation, log in or create an account if necessary, scroll to the Lat/Lon Options section, and select Whole Seconds from the list of available formats. Click Save My Profile in the lower-right corner of the page. return to the aviation charts interface, and refresh the page.

- Switch to the Airports view within the Location menu and note the ICAO code for the airport, depicted by  icons, nearest your center of operations. The distance and direction describes where the airport is located relative to the lat/long (see screenshot).

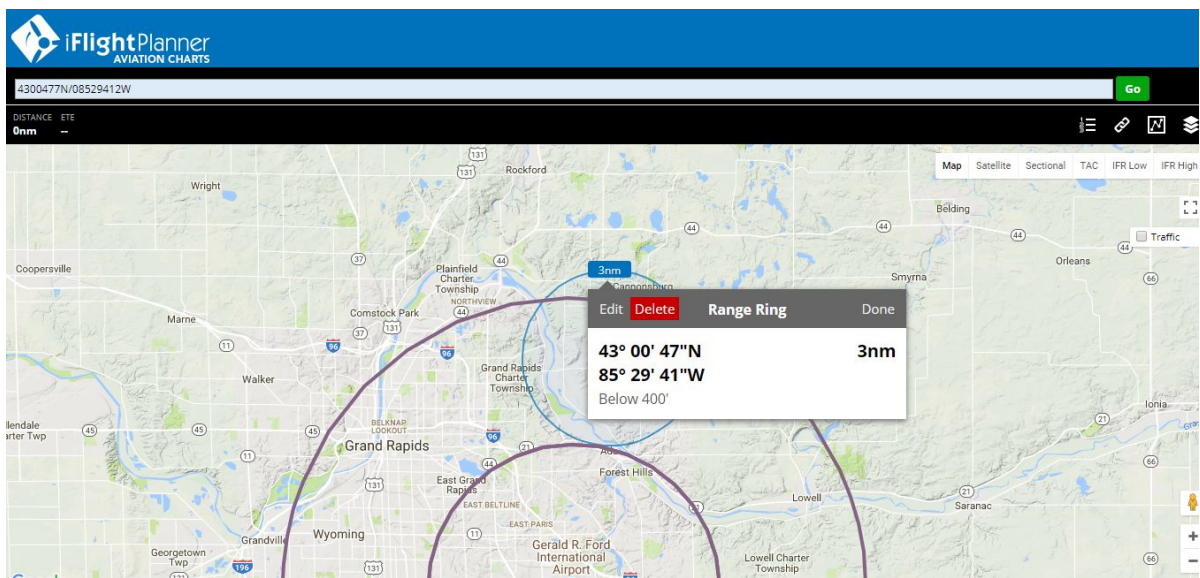
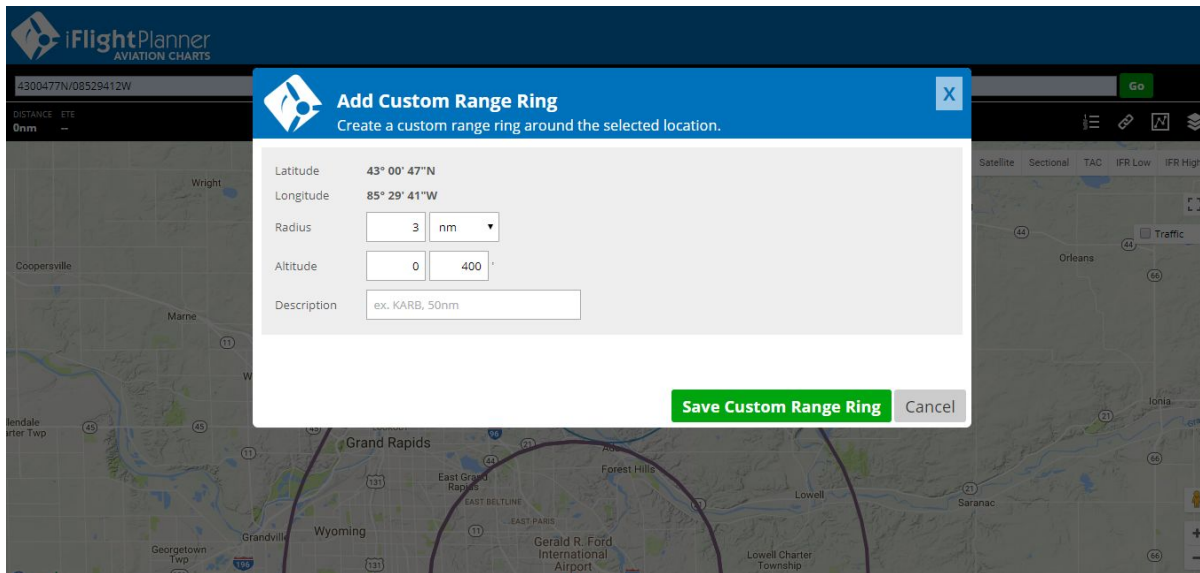


- Change back to the All view within the Location menu and click on the lat/long coordinates to have them added to the Flight Route field. A blue, lat/long icon will be placed at the center of your operations area.
- Identify the class of airspace for your proposed operation by switching to the Sectional map, or by using the Map Layers menu found in the upper-right corner and selecting any or all of the layers for Class B, C, D or E airspace. The Class Airspace layers provide infinitely more detail of airspace boundaries that is available on a Sectional chart.



NOTE: If you are unable to identify the airspace using the class airspace layers, click on the map near your center of operations and select the Airspace option from the Location menu. You will be shown a vertical profile of all airspace, including AIRMETS, SIGMETs, and TFRs, near that location.

7. [iFlightPlanner Premium](#) and [Premium Plus](#) members may also **create custom airspace** of any radius around any location by clicking “Add Custom Range Ring” from the Location menu, or the mini menu that appears when clicking on an airport or lat/long icon.



8. Save the URL for the center of your operation by clicking the Show Link button in the upper-right corner. It will look like this:

www.iFlightPlanner.com/AviationCharts/?Map=Hybrid&GS=110&Route=4215565N/08344552W

You may document, share, email, and **use the unique URL in the description of the Proposed Location of Operation** in your request to the FAA.

Help? If you have questions specific to planning your UAS operations with iFlightPlanner that were not covered in this tutorial please send an email to the iFlightPlanner Crew at uas@iflightplanner.com. All other questions should be directed to the FAA at uashelp@faa.gov.